

FH-EF Series



FHM

**FARMER-HELPER
MACHINERY COMPANY**



- Scan Me To Watch The Assembly Video!

OPERATION & PARTS MANUAL

Please read these instructions before using. Always grease all fittings and be sure to always check and fill with oil before operating! Retain this manual for future use.

BETSTCO

www.Betstco.com

541-895-3083 M-F 7am-4pm PST

RUGGED LABOR SAVING EQUIPMENT SINCE 1995 83371 Melton Rd, Creswell OR 97426



FOR EWORD

The purpose of this manual is to assist you in operating and maintaining your Flail Mower. Read it carefully before operating and maintaining the Flail Mower, it furnishes the specifications, construction, instructions and also maintenance information. Some information may be general in nature due to unknown and varying conditions. However, thru experience and these instructions, you should be able to develop operating procedures suitable for your particular situation.

“Right” and “Left” as used throughout this manual are determined by facing the direction the machine will travel when in use.

Please note that the contents of this operations manual may be a little bit different from the Flail Mower that you actually purchase. This is due to the continuous improvement and development of the Farmer-Helper series Flail Mower, however, the specifications and structure of the Flail Mower shall be subject to change without notice.

Thank you very much for purchasing our products. We cordially welcome all the suggestions, advises and comments on our products from the users so that we may make necessary improvements on our products continuously to meet the requirements of every specific market. Support@Betstco.com

We strived to make these operations manual as correct as possible. However, we do not guarantee the accuracy or recentness of the information herein due to having translated the manual to English. We assume no liability for errors or omission.

CONTENTS

CHAPTER 1 SAFETY INFORMATION.....	4
1.0 Assembly Instructions.....	4
1.1 Safety First.....	8
1.2 Safety Signs.....	9
CHAPTER 2 SPECIFICATIONS.....	11
2.1 Brief Introduction.....	12
2.2 Specifications and Parameters for Flail Mower.....	12
CHAPTER 3 OPERATION.....	13
3.1 Checking Before Operating.....	13
3.2 Adjusting the Height.....	14
3.3 Regulating the Tension of Driving Belt.....	15
3.4 Starting up.....	16
CHAPTER 4 SERVICE AND MAINTENANCE.....	17
4.1 Service.....	17
4.2 Maintenance.....	17
4.3 Storage.....	18
4.4 Operation After Storage.....	19
CHAPTER 5 ILLUSTRATED PARTS CATALOGUE.....	20
5.1 Flail Mower Assembly.....	21
5.2 Gearbox Assembly.....	22
5.3 Blade Axle and Transmission Parts.....	23
PARTS REQUEST.....	31

ADD OIL BEFORE OPERATING!

GREASE ALL FITTINGS BEFORE OPERATING!

ASSEMBLY INSTRUCTION



EFG-Series Assembly Instructions

Step # 0: Removing Unit from Shipping Frame

Tools Needed



Angle Grinder or Metal cutting tool



EFG-Series Assembly Instructions

Step # 1: Installing uprights

Tools Needed



18mm wrench and 19mm socket



EFG-Series Assembly Instructions

Step # 1: Installing uprights

Parts Needed



Uprights and buckle



ASSEMBLY INSTRUCTION



EFG-Series Assembly Instructions

Step # 2: Installing kickstand

Tools Needed



18mm wrench and 19mm socket



EFG-Series Assembly Instructions

Step # 2: Installing kickstand

Parts Needed



Kickstand



EFG-Series Assembly Instructions

Step # 3: Installing PTO Guard

Tools Needed



13mm socket



EFG-Series Assembly Instructions

Step # 3: Installing PTO Guard

Parts Needed



PTO Guard

ASSEMBLY INSTRUCTION



EFG-Series Assembly Instructions

Step # 4: Installing Belt Guard

Tools Needed



Grease gun and 18mm socket



EFG-Series Assembly Instructions

Step # 4: Installing Belt Guard

Parts Needed



Belt Guard



ASSEMBLY INSTRUCTION



EFG-Series Assembly Instructions

Step # 5: Lube Grease Zerks

Tools Needed



Grease gun



EFG-Series Assembly Instructions

Step # 6: Lube PTO Shaft

Tools Needed



Grease gun



EFG-Series Assembly Instructions

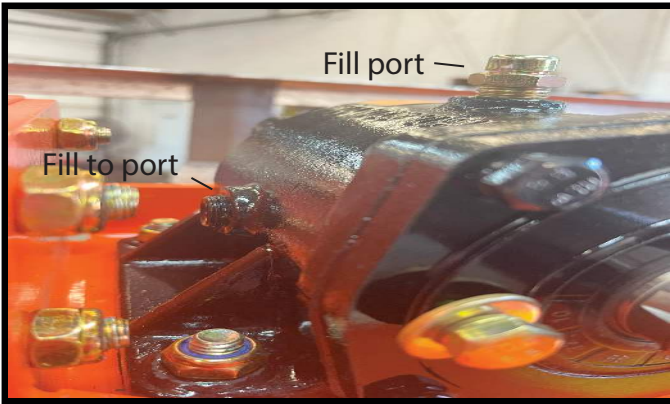
Step # 6: Lube PTO Shaft

Parts Needed



PTO Shaft

ASSEMBLY INSTRUCTION



Begin by removing the fill port located on the top of the gearbox. Proceed to remove the Allen bolt situated on the side of the gearbox, which will serve as your fill point. Continue filling using 80-90 gear until you observe a trickle of oil, indicating that your gearbox is adequately filled and ready for operation.

CHAPTER 1 SAFETY INFORMATION

PLEASE NOTE

Make sure all potential operators of this equipment review this manual and all safety messages contained within.

1.1 Safety First

Read this service manual before using the machine.



This safety alert symbol indicates important safety messages in this manual. When you see this symbol, carefully read this message that follows and be alert to the possibility of personal injury or death.

This machine is designed for pulverizing grass and short bramble, and shall be used in the indicated purpose. You take the responsibility if the machine is used in any other purposes.

For safety of personnel and good performance of the machine, you shall check the performance of the machine and the tractor before starting the machine.

All persons and animals shall keep away from the machine when you start it.

The operator shall not put on too loose of clothing during operation of the machine.

Do not touch the rotor when the machine rotates.

Keep away from the machine when it is in motion.

When the tractor and the machine are moving on the road, always keep the machine off.

Before repairing the machine, stop all movable parts and the tractor, keep the key with yourself.

Always keep the machine in a good state, if necessary, repair or change the defective parts.

Don't use the machine to transport personnel.

Don't modify the machine.

Pay attention to the sharp and pointed parts during repairing the machine.

All protective parts shall be guaranteed to be in good state before starting the machine.

Don't leave the tractor when moving the machine; and always take away the key of the tractor with you.

The machine shall be operated in the recommended speed.

Don't stay between the tractor and the machine.

Don't start the machine in a closed place (due to the exhaust from the tractor).

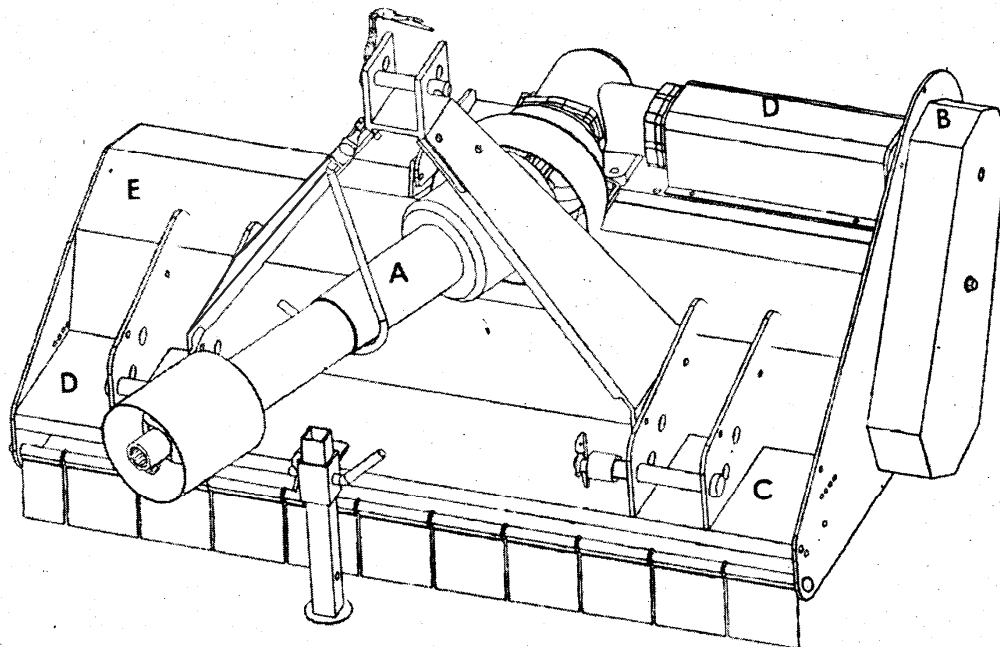
1.2 Safety Signs

1.2.1 Care of Safety Signs

1. Keep safety signs clean and legible at all times.
2. Replace safety signs that are missing or have become illegible.
3. If a component with a safety sign(s) affixed is replaced with a new part, make sure new safety sign(s) are attached in the same locations as the replaced components.
4. Safety signs are available from your authorized Distributor or Dealer Parts Department or the factory.

1.2.2 Safety Signs locations

The types of safety signs and locations on the equipment are shown in the illustrations that follow. Good safety requires that you familiarize yourself with the various safety signs, the type of warning and the area, or particular function related to that area, that requires your **SAFETY AWARENESS**.



A



B



C



D



E



CHAPTER 2 SPECIFICATIONS

2.1 Brief Introduction

Farmer Helper series Flail mower is designed for pulverizing grass and short bramble, and shall be used in the indicated purpose.

The Flail mower consists of a rotating shaft with many blades attached to it. The blades cut the grass while traveling over the working area. Rotational power to the shaft is provided by the tractor PTO through the gearbox in the center of the machine.

The Flail mower attaches to the 3 point hitch on the tractor.

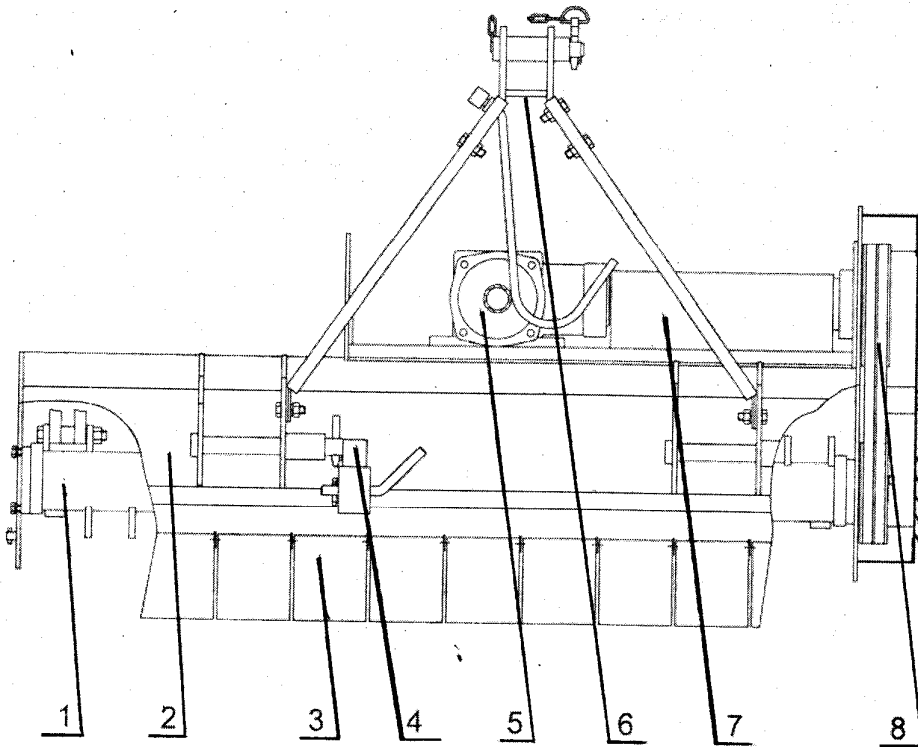


Figure 2.1 Components of the Flail Mower

1. Blade axle
2. Blade axle cover
3. Combined fender
4. Supporting frame
5. Gearbox assembly
6. Suspension bracket
7. Transmission shaft
8. Belt wheel and belt

Farmer-Helper EF Series Standard Grass Flail Mowers Specifications

SPEC	FH-EF85	FH-EF95	FH-EF105	FH-EF125	FH-EF135	FH-EF155	FH-EF175
Working Width	33"	37"	41"	48"	53	60"	68"
Overall Width	37"	41"	45"	52"	60	64"	72"
*Min. HP Req.	14 HP	15 HP	16 HP	20 HP	22	24 HP	28 HP
Hitch	Cat I	Cat I	Cat I	Cat I	CAT I	Cat I	Cat I
Gear Box Rating	45 HP	45 HP	45 HP	45 HP	45 HP	45 HP	45 HP
Distance Right of Center Mount*	14.5 inches or 18.75 inches	16.87 inches or 21.12 inches	20.62 inches or 24.87 inches	24.75 inches or 29 inches	28.5 inches or 32.25 inches	32.5 inches or 36.75 inches	40.5 inches or 44.75 inches
Grass Blades	30 Blades	32 Blades	36 Blades	42 Blades	48	54 Blades	60 Blades
OPTL. Mulch Blades	15 Mulch Blades	16 Mulch Blades	18 Mulch Blades	21 Mulch Blades	24 Mulch Blades	27 Mulch Blades	30 Mulch Blades
Housing Thickness	4 MM	4 MM	4 MM	4 MM	4MM	5 MM	5 MM
Rotor Dia.	3"	3"	3"	3"	3"	3"	3"
No. of Belts	2	2	2	2	2	3	4
3pt. Conn. Width	19 3/4" - 27 1/2"	19 3/4" - 27 1/2"	19 3/4" - 27 1/2"	19 3/4" - 27 1/2"	19 3/4" - 27 1/2"	19 3/4" - 27 1/2"	19 3/4" - 27 1/2"
DriveLine Type	Series 4 1-3/8" SPL w/QD x 1-3/8" SPL w/ Shear Bolt	Series 4 1-3/8" SPL w/QD x 1-3/8" SPL w/ Shear Bolt	Series 4 1-3/8" SPL w/QD x 1-3/8" SPL w/ Shear Bolt	Series 4 1-3/8" SPL w/QD x 1-3/8" SPL w/ Shear Bolt	Series 4 1-3/8" SPL w/QD x 1-3/8" SPL w/ Shear Bolt	Series 5 1-3/8" SPL w/QD x 1-3/8" SPL w/ Shear Bolt	Series 5 1-3/8" SPL w/QD x 1-3/8" SPL w/ Shear Bolt
Warranty	2 Years	2 Years	2 Years	2 Years	2 Years	2 Years	2 Years
Weight	285 lbs	318 lbs	386 lbs	417 lbs	465	527 lbs	626 lbs
Crated Weight	310 lbs	343 lbs	409 lbs	442 lbs	490	552 lbs	651 lbs

* 3-Point Hitch may be attached in two positions to change offset when looking at mower from operators seat.

* If your tractor has gear transmission this is PTO horsepower. If your tractor has hydro transmission this is engine horsepower

CHAPTER 3 OPERATION



CAUTION: Be familiar with the machine before starting. Read this manual carefully to learn how to operate the machine safely and how to set it to provide maximum field efficiency.

3.1 Checking Before Operating



ATTENTION: Only use universal joint conforming to CE standard and protect them properly.

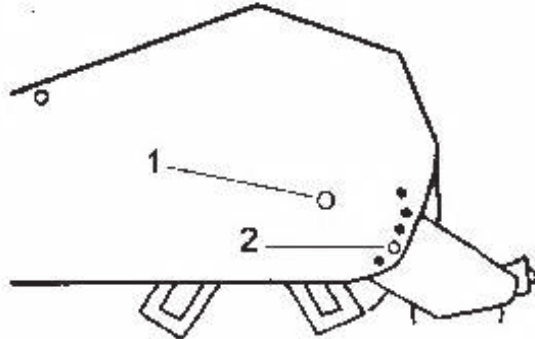
Before operating the machine, the following areas should be checked off:

1. Before starting up the machine, check and lubricate all grease points, all lubricated parts inside the machine.
2. Use only an agricultural tractor of horsepower within limits of the machine specified.
3. Check that the machine is properly attached to the tractor. Be sure retainers are used on the mounting pins.
4. Be sure extra weights are mounted on the front of the tractor.
5. Check the oil level in the gearbox. Add as required.
6. Check that the tractor PTO shaft turns freely and that the machine driving shaft can telescope easily.
7. Check the blades. Be sure they are not damaged or broken and swing freely in their mount. Repair or replace as required.
8. Check and tighten the blade bolts.
9. Check for entangled material in all rotating parts. Remove this material.
10. Install and secure all guards, doors and covers before starting.
11. Before installing the universal joint, the tractor and the machine motor shall be stopped and the key be taken away. The universal joints shall be installed in good state, with proper protective parts.
12. The chain on the protective parts of the universal joint shall be guaranteed in good condition, in case, automatic rotation occurs.
13. All other persons shall leave the ground before connecting the driving power from the tractor. Keep the output of the tractor at 540 RPM.
14. Before cleaning, repairing and lubricating the machine, stop the motor and take the key with you.
15. When the universal joint is not connected with the tractor, they must be connected again through the frame to protect the joint from damaging.
16. Don't approach the machine when the machine runs.

3.2 ADJUSTING HEIGHT

To get the most out of your Flail Mower, it should be set within the recommended height. For saving fuel and power, and reducing wear on the machine, the cutting height must be regulated correctly.

When regulating the working height, loosen screw (1), remove the screws (2) on both sides; adjust the roller height (see following drawing) to desired position. The lowest hole is the highest working height. Return screws (2) to the selected screw holes; tighten screw (1) and screws (2).



CUTTING HEIGHT ADJUSTMENT

The flail mower cutting height depends upon the height of roller, height of adjustable skids, and length of top center link.

On uneven terrain the roller and skids should both be touching the surface of cutting area.

On fairly even terrain the only rear roller needs to be touching the cutting surface.

On rough and rocky terrain it is recommend that you cut high with all parts of the mower 3" above the ground. To achieve lowest cutting height in this type of terrain, raise roller and skids so mower can be operated with 3 pt in fixed position, remember change in elevation may require you to adjust cutting height to insure blades do not make contact with the surface.

To adjust height of roller or skids, remove bolts and nuts that affix them, lift or lower both sides in equal measurements, replace bolts and re-tighten.

The top center link can also be used to adjust cutting height and aggressiveness of the blades. In level grass areas the top link should be adjust so the mower sits on a slightly lifted horizontal plane. In dense or rough terrain the mower should sit in a slightly higher horizontal plane. By adjusting the top center link length you will notice the front of the mower pivots on the rear roller.

To begin mowing, clear the area to be mowed of objects and debris that might be picked up and thrown by the mower blades.

Grass is best cut when dry. Mowing wet grass can cause plugging resulting in grass clumps behind the mower.

Grass should be cut frequently as smaller clippings deteriorate faster.

If cutting extremely tall grass, it is best to raise the cutting height and mow the area, then lower the cutting height and mow a second time at the desired height.

Normal mowing speed will be between 2-5 mph and you will need to maintain tractor PTO speed to produce a clean cut so select a tractor gear and range that will maintain this combination. The quality of cut or degree of debris pulverization will be better at lower ground speeds and cutting denser ground cover or heavier brush may create the need to slow down. Remember to look back often.

Always check Gear Oil Level before mowing.

Engage PTO driveline at 540 RPM selection, Tractor engine RPM should be at least 1200 RPM, or as defined by tractor manufactures' "PTO RPM RANG E"

At low engine rpm's you may experience jerking in the mower, increase the engine rpm until there is no jerking and the blade rotor rotates at a constant speed.

Most cutting is preformed with the 3pt lift system in the float position.

If the blades are touching the surface while in float position, either adjust cutting height or raise mower with 3pt lift into fixed height position. See Cutting Height Adjustment.

At first begin mowing at a slow forward speed. Mower knives will cut better at a faster blades speed and slower travel speed.

After mowing 50 feet, stop and check to see that the mower is adjusted properly for the cutting conditions.

Do Not make sharp turns or attempt to back up while the mower is on the ground.

Do Not engage PTO with mower raised off the ground.

3.3 Regulating the Tension of Driving Belt



ATTENTION: The machine shall always stand still for regulating the tension.

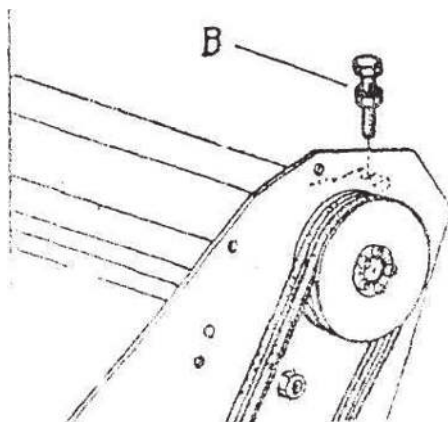
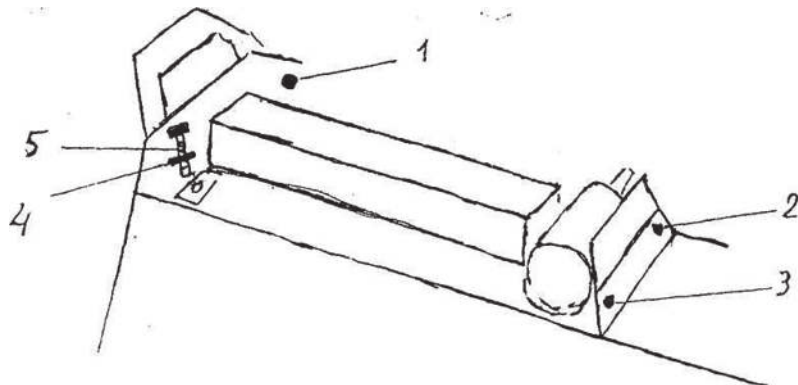
Remove the driving belt cover.

Loosen screws 1. 2. 3. 4.

Tighten the driving belt with screw 5.

Tighten the screws 1. 2. 3. 4.

Put back the driving belt cover.



The recommended moving forward speed is 1.5 km/h, according to the grass height, thickness and working condition.

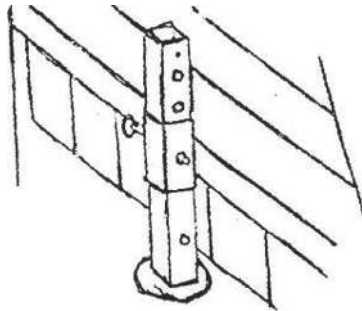
The driving belts are tightened by hand at the regulating point B up to the correct tension. Tighten all screws after regulating.

The driving belts shall be replaced when they are not in a good condition.

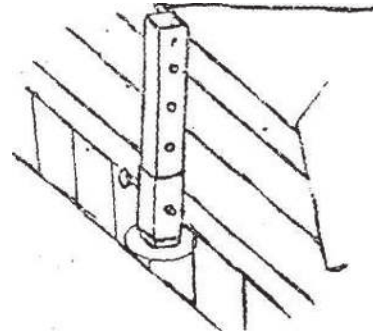
3.4 Starting up

- Before starting the machine, control and adjust the following items:
 - Drive belt tension.
 - Oil level of gearbox.
 - Point of lubrication.
 - All bolts, nuts and screws.

Storage
Position



Operating
Position

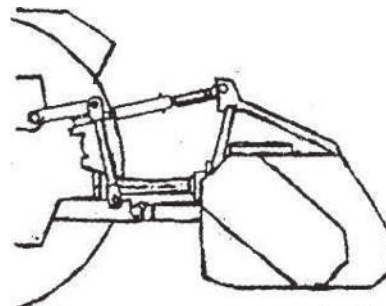
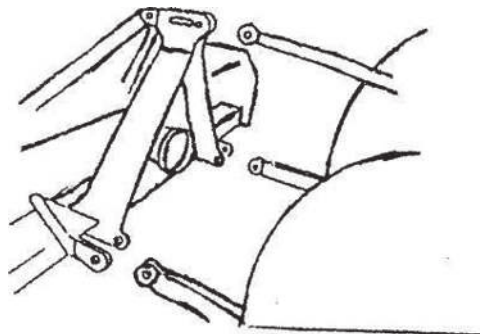


In order to keep the machine stable, lower the adjustment stand when the machine is stopped (see above drawing).



ATTENTION: When transferring the moving state of the machine to the working state, do not stand between the machine and the tractor.

The machine coupling is equipped with 3 pins so that the machine can be coupled with all tractors with universal coupling with 3 pins. Each telescopic pole on the machine can be adjusted properly according to the type of the tractor. Keep the Flail mower away the tractor with a certain distance. The universal joint shall be tense and the largest distance in the closed state shall be 5/10 cm.



Moving the lifting arm, and putting it between axes, insert the joint pins and fix them with pins. Fix the lifting arm with chain and tensioning device so as to prevent lateral movement of the machine. Connect the universal joint to the PTO shaft of the tractor on the side of the tractor. In any event, it cannot produce a collision in any position. While connecting 3 points, pay attention that the PTO shaft of the tractor shall be parallel with the ground. It is very important to keep the machine driving axle and the PTO shaft of the tractor in parallel.

The machine shall be lifted from the ground before moving the machine.

CHAPTER 4 SERVICE AND MAINTENANCE

4.1 Service

4.1.1 FLUIDS AND LUBRICANTS

1. Grease:

Use multi-purpose lithium based grease.

2. Gear Box Oil:

Use 80-90 dual-purpose oil or equivalent for all operating conditions.

Each Gearbox Capacity: 0.85 liter/1 quart

3. Storing Lubricants:

Your machine can operate at top efficiency only if clean lubricants are used. Use clean containers to handle all lubricants. Store them in an area protected from dust, moisture and other contaminants.

4.1.2 GREASING

Use a hand-held grease gun for all greasing.

Wipe grease nipple with a clean cloth before greasing, to avoid injecting dirt and grit.

Replace and repair broken nipples immediately.

If nipples will not take grease, remove and clean thoroughly. Also clean lubricant passageway. Replace nipple if necessary with a new one.

4.2 Maintenance



All maintenance, repairing, cleaning and lubricating shall be conducted when the implement is disconnected from tractor or tractor motor is turned off and the key is removed from the tractor.

By following a careful service and maintenance program for your machine, you will enjoy many years of trouble-free operation.

The mower life is based on normal operating conditions. Severe or unusual conditions may require more frequent maintenance.

4.2.1 8 HOURS OR DAILY MAINTENANCE

Check and tighten all nuts and bolts as required.

Check the blades and fix or replace damaged parts if necessary. Do not install damaged, worn and unbalanced blades. Replace sleeves as they become worn.

NOTE:

The operator shall put on gloves and use suitable tools before changing blades.

Check the oil in the gearbox. Fill to the fill line if it is not.

Press grease into each grease nipple three to five times.

Clean the implement; take away all grass and mud.



IMPORTANT : CHECK THE OIL LEVEL ONLY WHEN THE UNIT IS COLD AND THE MACHINE IS LEVEL

4.2.2 SEASON MAINTENANCE

Check the machine as below, in addition to, daily maintenance.

Check the oil in the gearbox; replace it if it is contaminated.

Check the bearings of the blade spindles. Is mud and water entering because oil seals are damaged? If so, disassemble and clean, replace them if it is necessary. And then add grease to them.

4.2.3 ANNUAL MAINTENANCE

Clean mud and grass from the machine thoroughly.

Check and clean blade axles. Replace oil seals and add grease to them.

Check all blades, replace them if they are worn-out or damaged.

Repair the side skirts; they need to be repaired to original condition. Replace or repair damaged or broken protective devices.

Remove the drive shaft from the machine and take it apart. Check and replace any components that are damaged or worn. Re-install the drive shaft on the machine. It should telescope easily and the guard turn freely on the shaft

Drain the oil in the gearbox out thoroughly. Check and clean the box. Refill with new gear oil to the required level.

The oil shall be drained off after 50 hours of use, the first time. Thereafter, the oil shall be drained off every 250 hours. The oil should be changed yearly even if not used 250 hours.

The draining procedure is as follows: remove the gear box from deck. Remove fill plug, turn upside down and drain oil out. After all oil is out, reinstall gearbox and fill with gear oil to the required level..



ATTENTION: DO NOT FORGET TO DISCONNECT THE BATTERY CABLES FROM THE TRACTOR BATTERY IF YOU ARE WELDING ON THE MOWER WHEN IT IS CONNECTED TO THE TRACTOR.

4.3 Storage

The machine inside and outside shall be cleaned carefully so as to avoid corrosion.

Do not spray water on the rolling bearing if you clean the machine with a high pressure sprayer.

Check and clean the PTO driveline, driving belt press roller and replace them if they are

not in good condition.

Spread oil on all parts rubbed and damaged for anti corrosion.

Store the machine in a dry, level area. Support the frame with planks if necessary.

44 Operation After Storage

Before the machine is started up, check the following items:

Check oil level and add to if required.

Check and tighten all screws and nuts.

Check the blade condition. Replace as required.

Check the air hole on the gearbox. If it is blocked, clean or open the hole with compressed air.

Do not spread oil or grease on the driving belts. If there is oil or grease on them, wipe the belts clean, because this will cause sliding and premature wear.



ATTENTION: Check the machine every 10 hours. Repair the damaged parts or replace the blade according to the manufacturer's recommendation, to keep the machine balancing.

Check all tightening parts and replace them if necessary.

Don't remove the protective parts on some points and protect the machine.



ATTENTION: In the case of vibration, stop the machine and check the blade. If the blade breaks or is damaged, replace it with same type of the blade. If the machine vibrates still, contact support at Betst Products, llc.

E-mail: support@betstco.com

CHAPTER 5 ILLUSTRATED PARTS CATALOGUE





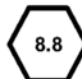

This manual contains a parts list for your machine. It is divided into major sections, which correspond to the groups shown in the Table of Contents and the accompanying illustration.

The first page of each major section lists the contents of that section, each of which consists of enlarged views and related numbered listings.

When ordering parts

Always give your dealer the Model of your machine to assist them in ordering and obtaining the correct parts. Use the enlarged view and numbered listing of the area of interest to exactly identify the required part.

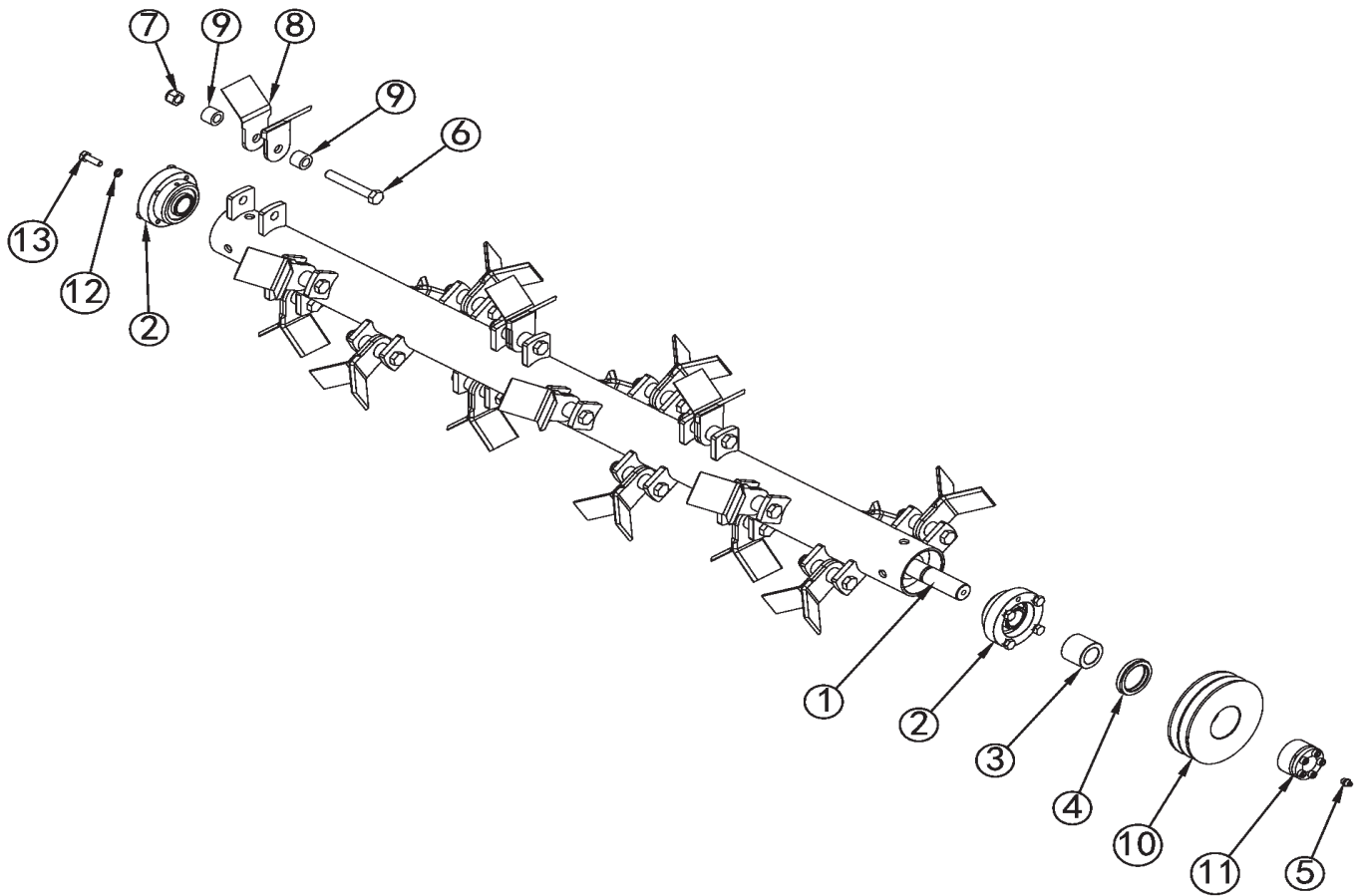
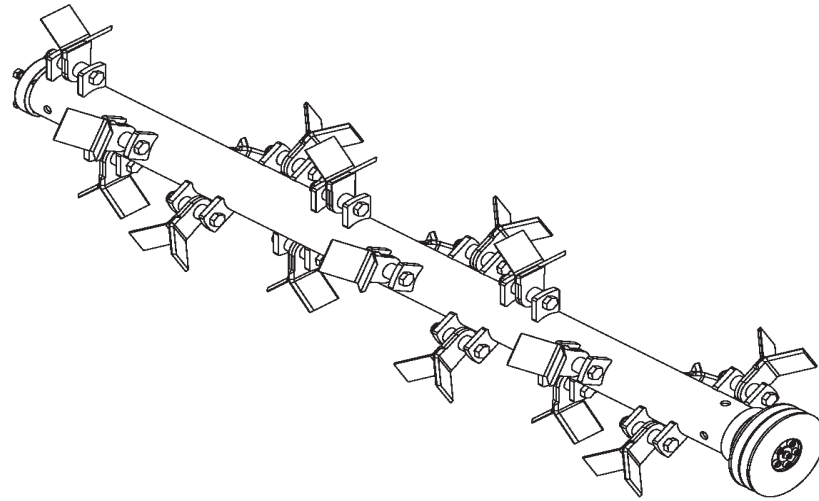
To order parts email parts@Betstco.com or call 1-541-895-3083

Torque Values Chart													
in-tpi ¹	Bolt Head Identification						mm x pitch	Bolt Head Identification					
	 Grade 2		 Grade 5		 Grade 8			 Class 5.8		 Class 8.8		 Class 10.9	
	N · m	ft-lb ³	N · m	ft-lb	N · m	ft-lb	N · m	ft-lb	N · m	ft-lb	N · m	ft-lb	
1/4" - 20	7.4	5.6	11	8	16	12	M 5 X 0.8	4	3	6	5	9	7
1/4" - 28	8.5	6	13	10	18	14	M 6 X 1	7	5	11	8	15	11
5/16" - 18	15	11	24	17	33	25	M 8 X 1.25	17	12	26	19	36	27
5/16" - 24	17	13	26	19	37	27	M 8 X 1	18	13	28	21	39	29
3/8" - 16	27	20	42	31	59	44	M10 X 1.5	33	24	52	39	72	53
3/8" - 24	31	22	47	35	67	49	M10 X 0.75	39	29	61	45	85	62
7/16" - 14	43	32	67	49	95	70	M12 X 1.75	58	42	91	67	125	93
7/16" - 20	49	36	75	55	105	78	M12 X 1.5	60	44	95	70	130	97
1/2" - 13	66	49	105	76	145	105	M12 X 1	90	66	105	77	145	105
1/2" - 20	75	55	115	85	165	120	M14 X 2	92	68	145	105	200	150
9/16" - 12	95	70	150	110	210	155	M14 X 1.5	99	73	155	115	215	160
9/16" - 18	105	79	165	120	235	170	M16 X 2	145	105	225	165	315	230
5/8" - 11	130	97	205	150	285	210	M16 X 1.5	155	115	240	180	335	245
5/8" - 18	150	110	230	170	325	240	M18 X 2.5	195	145	310	230	405	300
3/4" - 10	235	170	360	265	510	375	M18 X 1.5	220	165	350	260	485	355
3/4" - 16	260	190	405	295	570	420	M20 X 2.5	280	205	440	325	610	450
7/8" - 9	225	165	585	430	820	605	M20 X 1.5	310	230	650	480	900	665
7/8" - 14	250	185	640	475	905	670	M24 X 3	480	355	760	560	1050	780
1" - 8	340	250	875	645	1230	910	M24 X 2	525	390	830	610	1150	845
1" - 12	370	275	955	705	1350	995	M30 X 3.5	960	705	1510	1120	2100	1550
1-1/8" - 7	480	355	1080	795	1750	1290	M30 X 2	1060	785	1680	1240	2320	1710
1 1/8" - 12	540	395	1210	890	1960	1440	M36 X 3.5	1730	1270	2650	1950	3660	2700
1 1/4" - 7	680	500	1520	1120	2460	1820	M36 X 2	1880	1380	2960	2190	4100	3220
1 1/4" - 12	750	555	1680	1240	2730	2010							
1 3/8" - 6	890	655	1990	1470	3230	2380							
1 3/8" - 12	1010	745	2270	1670	3680	2710							
1 1/2" - 6	1180	870	2640	1950	4290	3160							
1 1/2" - 12	1330	980	2970	2190	4820	3560							

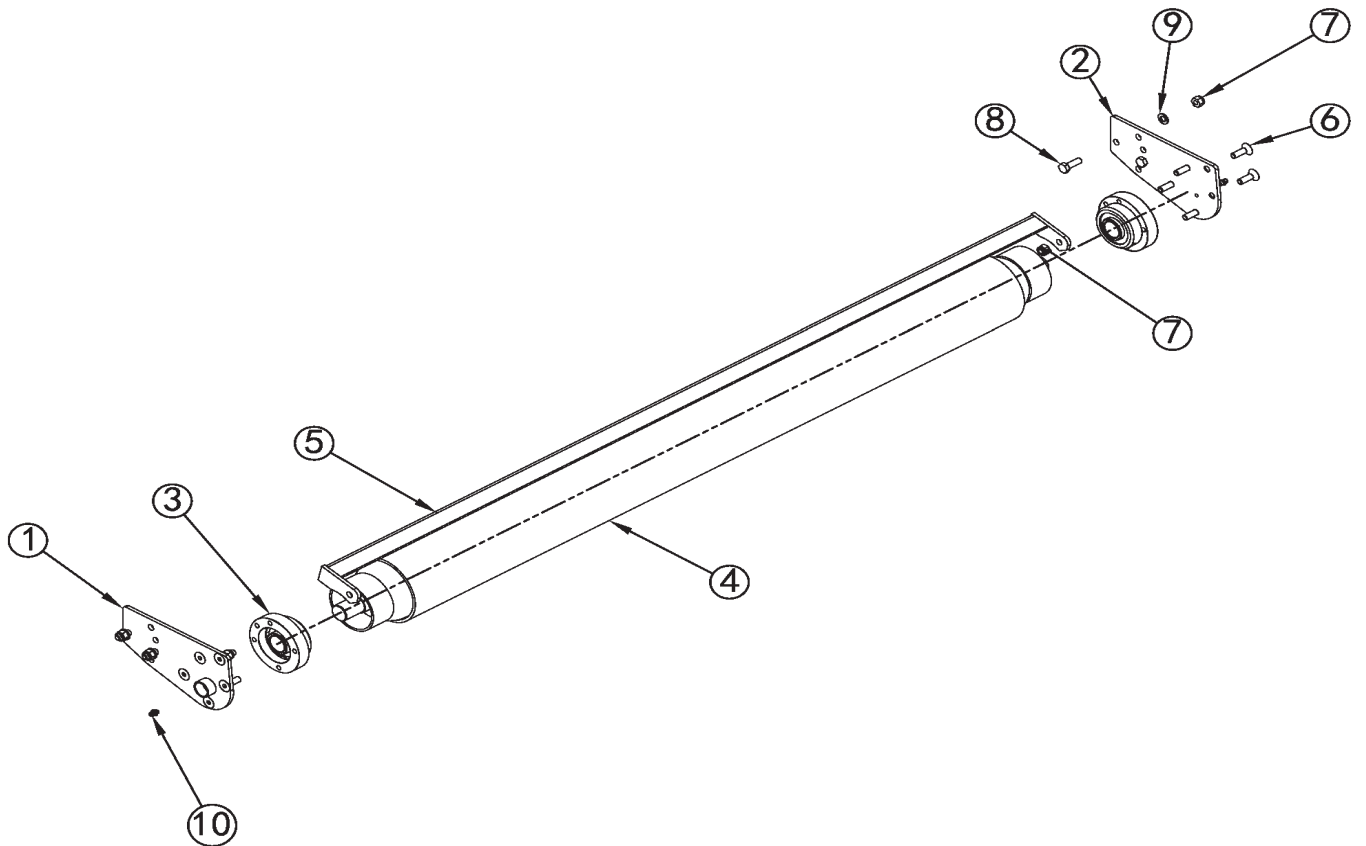
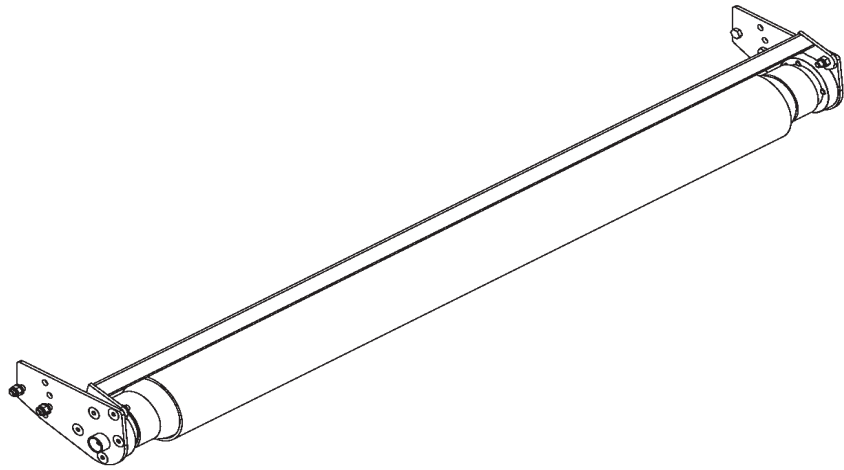
¹ in-tpi = nominal thread diameter in inches-threads per in.
² N · m = newton-meters
³ ft-lb = foot pounds
⁴ mm x pitch = nominal thread diameter in millimeters x thread pitch

Torque tolerance + 0%, -15% of torquing values. Unless otherwise specified use torque values listed above.

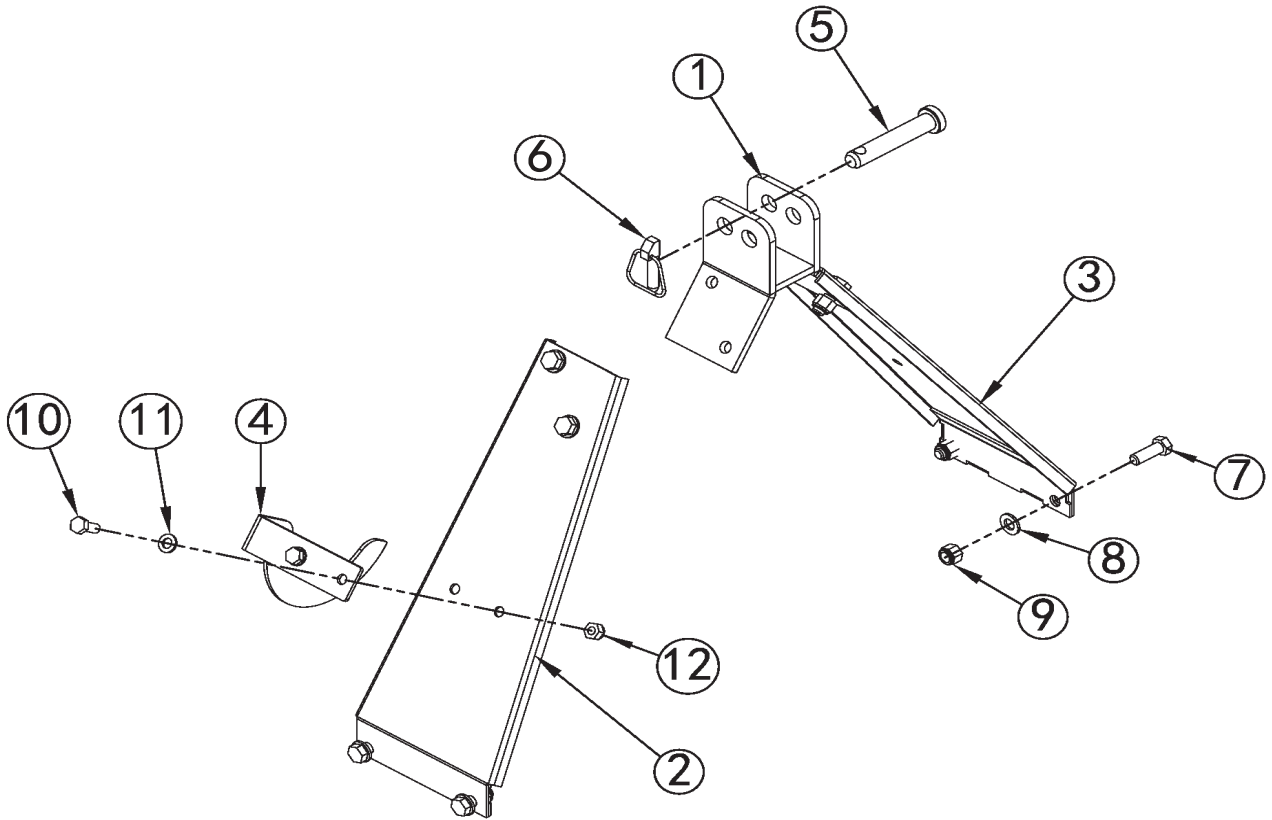
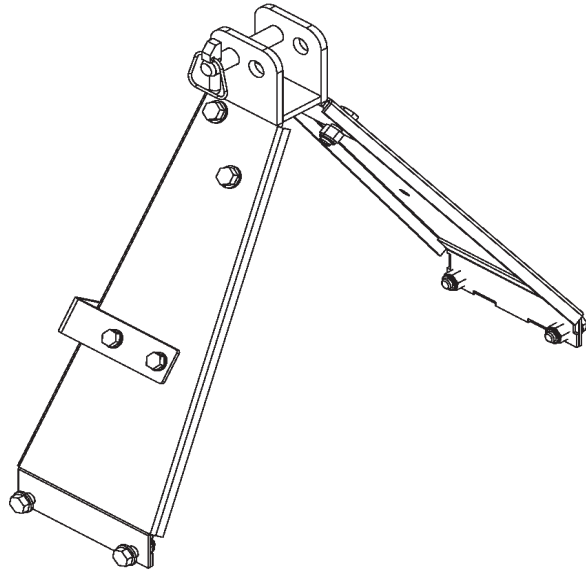
ITEM	PART No.	NAME & DESCRIPTION	QTY.
1	EF125.011	DECK, WELDMENT	1
2	EF125.005	POWER TRANSMISSION, ASSEMBLY	1
3	EF125.106	PULLEY	1
4	R04- 25X50	TAPER-LOCK R04-25x50	1
5	EF125.002	ROTOR, ASSEMBLY	1
6	EF125.003	ROLLER, ASSEMBLY	1
7	EF125.105	PLATE	1
8	A38	V-BELT NAPA Belt A38	2
9	EF125.013	PULLEY COVER, WELDMENT	1
10	EFGC125.104	ROD	1
11	EFG125.113	WIDE FLAP	12
12	F-EF100.00.121	NARROW FLAP	1
13	EF125.004	SUSPENSION, ASSEMBLY	1
14	W. 10	PLAIN WASHER 10	14
15	EFGC125.109	HITCH PIN, LOWER	2
16	EFGC125.108	SPACER	2
17	EFGC125.111	LEG, WELDMENT	1
18	1G135.00.107	PIN	1
19	W. 12	PLAIN WASHER 12	1
20	RP-3.2	R-PIN 3.2	1
21	LP-12	LOCK PIN 12	2
22	EF125.017	LEFT SKID, WELDMENT	1
23	EF125.018	RIGHT SKID, WELDMENT	1
24	W. 12	WASHER 12	1
25	B. 12X70	BOLT M12x70	1
26	GZ. 8X1	ZERK M8x1	1
27	B. 8X25	BOLT M8x25	13
28	W. 8	PLAIN WASHER 8	4
29	LN. 8	LOCK NUT M8	4
30	LW. 8	LOCK WASHER 8	9
31	CP. 4X18	COTTER 4x18	2



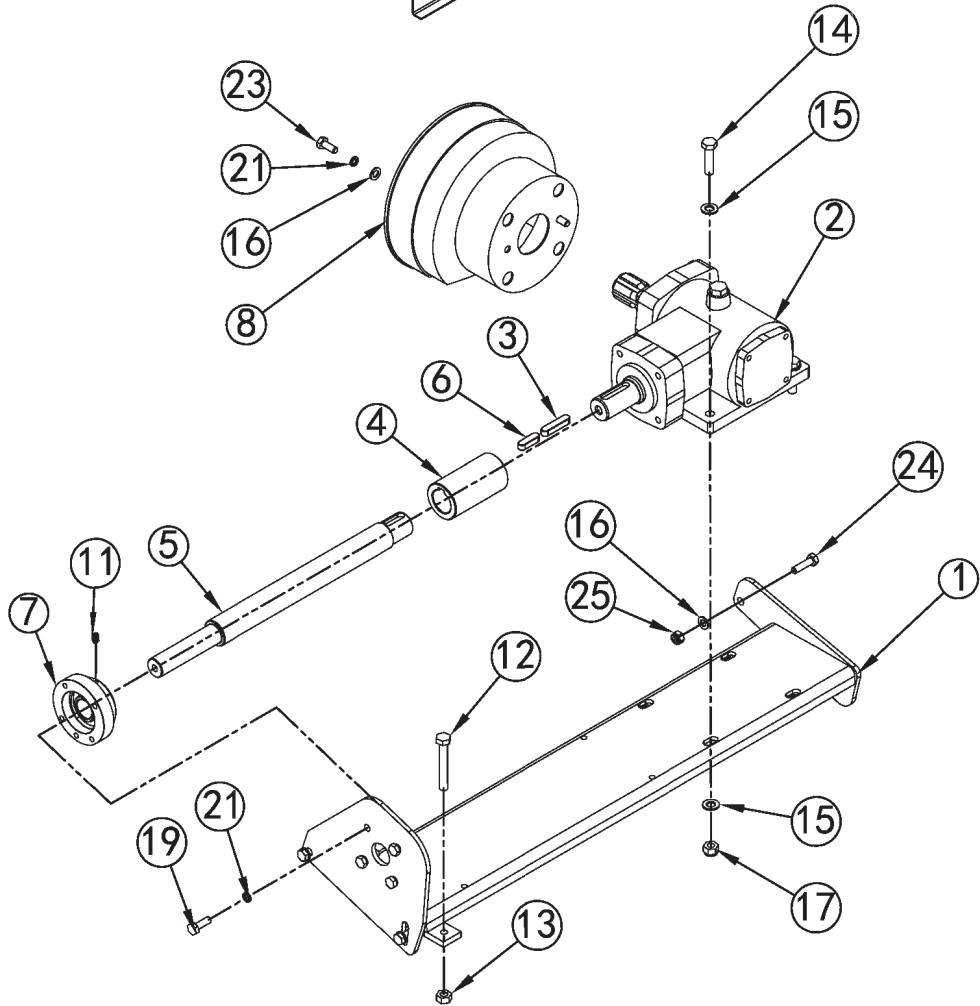
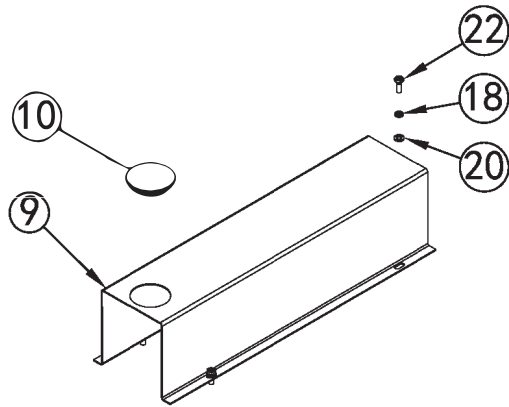
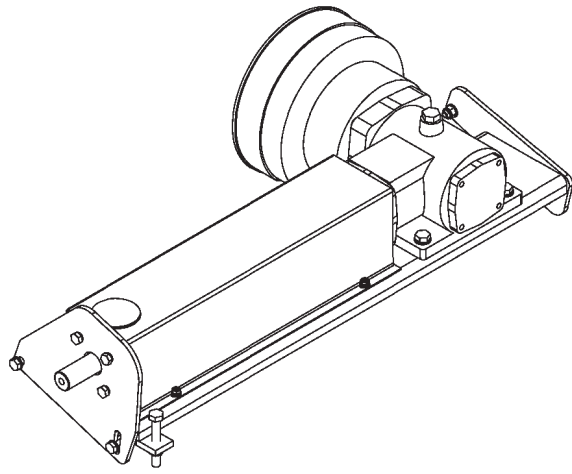
ITEM	PART No.	NAME & DESCRIPTION	QTY.
1	EF125.014- mach size	ROTOR, WELDMENT	1
2	F-UC205-Z	BEARING & SEAT UC205	2
3	EF125.108	BUSH	1
4	S. 40X55X8	SEAL 40x55x8	1
5	GZ. 8X1	ZERK M8x1	1
6	B. 12X80	BOLT M12x80	18
7	LN. 12	LOCK NUT M12	18
8	EF100.00.102G	KNIFE	36
9	EF100.00.101	SPACER	36
10	EF125.107	SMALL PULLEY	1
11	R04- 25X50	TAPER-LOCK R04-25x50	1
12	LW. 8	LOCK WASHER 8	8
13	B. 8X25	BOLT M8x25	8



ITEM	PART No.	NAME & DESCRIPTION	QTY.
1	EF125.030	LEFT SUPPORT, WELDMENT	1
2	EF125.031	RIGHT SUPPORT, WELDMENT	1
3	EFGC125.107A	BEARING & SEAT UC205	2
4	EF125.015	ROLLER, WELDMENT	1
5	EF125.016	SCRAPER, WELDMENT	1
6	SC. 8X25	SCREW M8x25	10
7	LN. 8	LOCK NUT M8	6
8	B. 8X25	BOLT M8x25	4
9	W. 8	PLAIN WASHER 8	4
10	Z. 6	ZERK M6	2



ITEM	PART No.	NAME & DESCRIPTION	QTY.
1	EFGC125.022	BRACKET, WELDMENT	1
2	EFGC125.021	LEFT PLATE, WELDMENT	1
3	EFGC125.023	RIGHT PLTE, WELDMENT	1
4	EF125.120	HOOK	1
5	EFGC125.123	HITCH PIN, UPPER	1
6	LP-12	LOCK PIN 12	1
7	B. 12X35	BOLT 12x35	8
8	W. 12	PLAIN WASHER 12	8
9	LN. 12	LOCK NUT M12	8
10	B. 10X25	BOLT M10x25	2
11	W. 10	PLAIN WASHER 10	2
12	LN. 10	LOCK NUT M10	2



ITEM	PART No.	NAME & DESCRIPTION	QTY.
1	EF125.012	GEARBOX SEAT WELDMENT	1
2	XH30.290Z.01W	GEARBOX, ASSEMBLY	1
3	K. 10X45	KEY A10x45	1
4	EF125.103	COUPLING SLEEVE	1
5	EF125.104.MAC SIZE	SHAFT	1
6	K. 10X32	KEY A10x32	1
7	F-UC205-Z	BEARING W/ FLANG UC205	1
8	EF125.102	PTO COVER	1
9	EF125.101	COVER	1
10	FM150.123	LID	1
11	GZ. 6	ZERK M6	1
12	B. 10X70	BOLT M10x70	1
13	N. 10	NUT M10	1
14	B. 10X40	BOLT M10x40	4
15	W. 10	PLAIN WASHER 10	8
16	W. 8	PLAIN WASHER 8	10
17	LN. 10	LOCK NUT M10	4
18	LW. 6	LOCK WASHER 6	4
19	B. 8X25	BOLT M8x25	4
20	W. 6	PLAIN WASHER 6	4
21	LW. 8	LOCK WASHER 8	6
22	SC. 6X16	SCREW M6x16	4
23	B. 8X20	BOLT M8x20	2
24	B. 8X30	BOLT M8x30	4
25	LN. 8	LOCK NUT M8	4



FHM
FARMER-HELPER
MACHINERY COMPANY

Parts Request Form

E-mail cservice@betstco.com

Name: _____

Address: _____

City State Zip: _____

Phone: _____

E-mail: _____

Model Number: _____

Serial Number: _____

Purchased From: _____

Purchase Date: _____

Item No.	Description	Qty	Price	Amount

Comments:

FARMER-HELPER Limited Warranty

Unless otherwise stated on purchase invoice, Betstco warrants to original Purchaser that Farmer-Helper products are free from major defects in material under normal use and service for a period of 90 Days from the date the product is purchased or shipped, whichever is later. Commercial use 90 days. Use at address that is not yours, is considered commercial use. Consumable, Expendable, Wear Items (Rubber plastic parts, hydraulic hoses, belts, tires, cables, blades, tines, wedges, teeth, tiups, chains, pins, brushes, filters, etc) and cracked hydraulic pumps, bent or broken cylinder rods are not covered under this warranty. Warranty does not cover items that have been modified, damaged by abuse or usage not in accordance with design or maintenance.

Betstco obligation under this warranty is to repair or replace defective upon approval by; Betstco, 83371 Melton Rd. N, Creswell OR 97426 that Warranty Claim is valid. Product shall be returned upon request of Betstco. Transportation charges to be prepaid by user.

Gasoline or diesel engines used to powered Farmer-Helper products are covered by the warranty of the appropriate engine manufacturean Purchaser must look to the engine manufacture for all issues relating to engine operation.

Betstco assumes no responsibility for outside labor.

PERMISSABLE BY APPLICABLE LAW, BETSTCO HEREBY DISCLAIMS ALL WARRANTIES OF ANY KIND, EITHER EXPRESS OR IMPLIED, INCLUDING, ANY IMPLIED WARRANTIES WITH RESPECT TO THE PRODUCT PURCHASED, WITHOUT LIMITING THE GENERALITY OF THE FOREGOING, BETSTCO HEREBY EXPRESSLY DISCLAIMS ALL LIABILITY FOR PRODUCT DEFECT OR FAILURE, CLAIMS THAT ARE DUE TO NORMAL WEAR, PRODUCT MISUSE, ABUSE, PRODUCT MODIFICATION, IMPROPER PRODUCT SELECTION, NON-COMPLIANCE WITH ANY CODES, OR MISAPPROPRIATION. BETSTCO MAKES NO WARRANTIES TO THOSE DEFINED AS "CONSUMERS" IN THE MAGNUSON-MOSS WARRANTY FEDERAL TRADE COMMISION IMPROVEMENTS ACT. THE FOREGOING EXCLUSION OF IMPLIED WARRANTIES DO NOT APPLY TO THE EXTENT PROHIBITED BY LAW. PLEASE REFER TO YOUR LOCAL LAWS FOR ANY SUCH PROHIBITIONS.

THERE SHALL BE NO LIABILITY FOR PRODUCT LIABILITY OR LIABILITY ON THE PART OF BETSTCO FOR ANY GENERAL SPECIAL OR CONSEQUENTIAL DAMAGES ARISING OUT OF THE SALE OR USE OF ANY PRODUCTS SOLD BY BETSTCO OR AN AGENT THEREOF, BETSTCO MAKES NO WARRANTIES, EXPRESS OR IMPLIED, (INCLUDING, BUT NOT LIMITED TO, ANY WARRANTY OF MERCHANTABILITY OR FITNESS OF THE PRODUCTS FOR ANY PURPOSE) WITH RESPECT TO THE PRODUCTS COVERED BY THIS AGREEMENT EXCEPT AS IN THIS PARAGRAPH OTHERWISE EXPRESSLY PROVIDED.

THIS IS THE SOLE AND ONLY WARRANTY OF VALUE-LEADER PRODUCTS, NO OTHER WARRANTY IS APPLICABLE, EITHE EXPRESSED OR IMPLIED, IN FACT BY LAW.

This warranty shall not be interpreted to render Betstco, or any authorized agent liable for injury or damages of any kind or nature, direct, consequential, or contingent, to a person or property.

The sole and only remedy in regard to any defective product shall be the repair or replacement thereof as herein provided, Betstco, agent(s) of Betstco shall not be liable for any consequential, special, incidental or punitive damages resulting from or caused by any such defects

Betstco reserves the rights to make improvements in design or changes in specifacations at any time, without incurring any obligations to owners of the units previously sold.

WARRANTY VOID IF REGISTRATION IS NOT RECEIVED OR RECORDED ONLINE WITHIN 30 DAYS OF PURCHASE DATE OR SHIP DATE, WHICHEVER IS LATER.

ITEM: _____ **MODEL#** _____ **PURCHASE DATE:** ____/____/____

PURCHASED FROM: _____ **GIFT INV# ORDER#** _____

OWNER NAME: _____ **SERIAL #** _____

OWNER ADDRESS: _____

CITY: _____ **COUNTY:** _____ **ST:** _____ **ZIP:** _____

PHONE: _____ **EMAIL:** _____

ACCEPTANCE OF RESPONSIBILITY:

I (PURCHASER) HAVE READ OPERATORS MANUAL AND LIMITED WARRANTY OR SOMEONE HAS READ/AND EXPLAINED ALL INSTRUCTIONS TO ME. I UNDERSTAND THIS WARRANTY DOES NOT COVER ANY LABOR AND THAT ALL DISPUTES WILL BE SETTLED BY BINDING ARBITRATION. BINDING ARBITRATION IS CONDUCTED BY THE BETTER BUSINESS BUREAU (BBB) LOCATED AT 4004 SW KRUSE WAY PLACE ST 375 LAKE OSWEGO OR 97035 OR THE CURRENT BBB LOCATION CLOSEST TO BETSTCO. I ACKNOWLEDGE MY LIMITED WARRANTY IS VOID IF ANY ATTEMPT TO REPAIR OR REPLACE DEFECTIVE PARTS HAS BEEN MADE BY UNAUTHORIZED PERSONNEL. I ACKNOWLEDGE RECEIPT OF MY OPERATORS MANUAL AND HAVE READ THE SAFE OPERATION SECTION. I ACKNOWLEDGE UNDERSTANDING MAINTENANCE AND SAFE OPERATION REQUIREMENTS, ITEM SPECIFICATIONS, OPERATION, CONTROLS AND STORAGE REQUIREMENTS. **I UNDERSTAND THAT IS ALONE AM RESPONSIBLE FOR PROPER MAINTENANCE, CARE AND SAFE OPERATION OF THIS FARMER-HELPER ITEM**

I (PURCHASER) AGREE THAT PERSONS NOT FAMILIAR WITH THE OPERATION OF THIS ITEM SHOULD NOT BE ALLOWED TO USE IT. CHILDREN ESPECIALLY SHOULD NOT OPERATE OR BE NEAR POWER PRODUCTS WHEN IN USE. ANYONE OPERATING VALUE-LEADER PRODUCTS SHOULD HAVE READ OPERATIONS MANUALS AND SAFETY MANUALS.

OWNERS SIGNATURE: x _____ **DATE:** ____/____/____

YOU MUST SIGN THIS WARRANTY AND MAIL OR FAX A COPY TO BETSTCO, 83371 MELTON RD, CRESWELL OR, 97426. IF YOU PREFER YOU MAY COMPLETE YOUR REGISTRATION ONLINE AT <https://betstco.com/product-registration/>. THIS WARRANTY IS NOT EFFECTIVE UNLESS PURCHASER COMPLETE REGISTRATION AND WARRANTY FOR WITHIN 30 DAYS OF PURCHASE OR SHIP DATE WHICHEVER IS LATER.

NOTE: WE MAY REFUSE WARRANTY OF ANY KIND UNLESS BETSTCO, RECEIVES A COMPLETED, LEGIBLE AND SIGNED WARRANTY REGISTRATION. IT IS THE RESPONSIBILITY OF THE PURCHASER TO ASSURE THAT REGISTRATION DOCUMENT IS RECEIVED BY

**1 YEAR EXTENDED WARRANTY & REGISTRATION
FARMER-HELPER IMPLEMENTS
BRANDED PRODUCTS
1 YEAR EXTENDED WARRANTY**

1 Year Extended Warranty amends to original Recorded Warranty Registration the time period of described coverage. Extended Warranty does not apply to consumable and Expendable Item as described in Product Warranty Registration.

This amendment does not affect any other part of recorded Warranty Registration or policy.

No one is authorized to alter, modify, or enlarge this Amendment to original recorded Warranty Registration

**EXTENDED REGISTRATION & PAYMENT MUST BE RECEIVED
WITHIN 30 DAYS OF PURCHASE DATE**

EXTENDED WARRANTY REGISTRATION

PRODUCT & MODEL # _____

SERIAL # _____

OWNER NAME : _____

BETSTCO INVOICE # _____

ACCEPTANCE OF RESPONSIBILITY:

I (PURCHASER) HAVE READ AND UNDERSTAND THE EXTENDED WARRANTY OR SOMEONE HAS READ AND EXPLAINED ALL THE ABOVE TO ME. I UNDERSTAND THIS EXTENDED WARRANTY DOES NOT COVER ANY LABOR. I HAVE FILED MY ORIGINAL WARRANTY REGISTRATION AND FULLY UNDERSTAND MY REQUIREMENTS. ***I UNDERSTAND THAT I ALONE AM RESPONSIBLE FOR PROPER MAINTENANCE, CARE AND SAFE OPERATION OF THIS TRACTOR IMPLEMENT.***

OWNERS SIGNATURE: x _____

DATE: ____/____/____

FAX TO 1-541-895-2756

YOU MUST SIGN THIS WARRANTY AND MAIL OR FAX A COPY TO BETSTCO, 83371 MELTON RD, CRESWELL OR. IF YOU PREFER YOU MAY COMPLETE YOUR REGISTRATION ONLINE AT <https://betstco.com/product-registration/>. THIS WARRANTY IS NOT EFFECTIVE UNLESS PURCHASER COMPLETE REGISTRATION AND WARRANTY FOR WITHIN 30 DAYS OF PURCHASE OR SHIP DATE WHICHEVER IS LATER.

NOTE: WE MAY REFUSE WARRANTY OF ANY KIND UNLESS BETSTCO, RECEIVES A COMPLETED, LEGIBLE AND SIGNED WARRANTY REGISTRATION. IT IS THE RESPONSIBILITY OF THE PURCHASER TO ASSURE THAT REGISTRATION DOCUMENT IS RECEIVED BY