

FH-BH5 BACKHOE



FHM
FARMER-HELPER
MACHINERY COMPANY



OPERATION & PARTS MANUAL

Please read these instructions before using. Always grease all fittings and be sure to always check and fill with oil before operating! Retain this manual for future use.

BETSTCO

RUGGED LABOR SAVING EQUIPMENT SINCE 1995

www.Betstco.com

541-895-3083 M-F 7am-4pm PST

83371 Melton Rd, Creswell OR 97426



TABLE OF CONTENTS

INTRODUCTION	3
CHAPTER 1 SAFETY PRECAUTIONS	4
1.1 SAFETY	4
1.2 SAFETY PRECAUTIONS	4
CHAPTER 2 SAFETY DECALS	6
CHAPTER 3 BACKHOE SPECIFICATIONS	9
3.1 BHM SERIES	9
3.2 BACKHOE COMPONENT	10
CHAPTER 4 TRACTOR PREPARATION	12
4.1 ROPS SYSTEM	12
4.2 HYDRAULIC SYSTEM	12
4.3 TIRE INFLATION	12
4.4 WHEEL TREAD SETTINGS	12
4.5 ATTACHMENT	12
4.6 COUNTER WEIGHT	12
CHAPTER 5 BACKHOE OPERATION	13
5.1 PRECAUTIONARY NOTE	13
5.2 INITIAL BACKHOE OPERATION	14
5.3 COLD WEATHER OPERATION	15
5.4 BACKHOE HYDRAULIC CONTROLS	15
5.5 SWING AND BOOM LOCK	17
5.6 STABILIZER CLIPS	17
CHAPTER 6 BACKHOE MOUNTING	18
6.1 BACKHOE MOUNTING	18
6.2 PTO CONNECTION	19
CHAPTER 7 HYDRAULIC PUMP ASSEMBLY	20
CHAPTER 8 LUBRICATION AND MAINTENANCE	21
CHAPTER 9 TROUBLE SHOOTING	23
CHAPTER 10 ILLUSTRATED PARTS CATALOG	27
10.1 BOOM ARM	27
10.2 HYDRAULIC PUMP	29
10.3 TOWER, STABILIZER and 3-PT	30
10.4 SWING ASSEMBLY	32
10.5 TOWER ASSEMBLY	33
10.6 BUCKET	34
10.7 SEAT	
FARMER HELPER IMPLEMENT WARRANTY	36

INTRODUCTION

The purpose of this manual is to assist you in maintaining and operating your Farmer Helper Backhoe.

Read the entire manual carefully before operating, it provides information and instructions that will help you achieve years of reliable performance.

Some information may be general in nature due to unknown and varying conditions. However, through experience and these instructions, you should be able to develop operating procedures suitable to your particular situation.

“Right” and “Left” as used throughout this manual are determined by operator in backhoe seat position is facing when in use.

The photos, illustrations and data used in this manual are current at the time of printing, but due to possible in-line production changes, your machine may vary slightly in detail. The manufacturer reserves the right to redesign the machine as may be necessary without notification.

Important

Illustrations used in this manual may not show all safety equipment that is recommended to ensure safe operation of tractor and backhoe. Refer to the safety precautions section of this manual for information concerning safety, consult your dealer for further information.

Serial Number and Location

The serial and model number is important information about the machine and it may be necessary to know it before obtaining the correct replacement part. The identification plate is located on the right side of control console.

Support Information

Support is available at Betst Products, llc, support department. Available by phone or email. Open M-F 8am - 5pm PST. Email support@betstproducts.com or by phone at 1-541-895-3083 or toll free at 1-877-876-7895.


SAFETY PRECAUTIONS

11 SAFETY

Understand that your safety and the safety of other persons is measured by how you service and operate this backhoe. Know the position and operations of all controls before you operate. Make sure you check all controls in safe area before starting.

Read this manual completely and thoroughly and make sure you understand all controls. All equipment has a limit. Make sure you are aware of the stability and load characteristics of this backhoe before you begin operation.

The safety information given in this manual does not replace any safety codes, insurance needs, federal, state and local laws. Make sure your machine has the correct equipment required by your local laws and regulations.

 This safety alert symbol indicates important safety messages in this manual. When you see this symbol, carefully read the message that follows and be alert to the possibility of personal injury or death.

12 SAFETY PRECAUTIONS

Before starting the engine of your tractor, make sure all operation controls are in park, lock or neutral position.

Operate controls only when seated in the operator's seat.

Equip your tractor with a ROPS cab or frame for your protection. See your tractor operator's manual for correct usage.

A frequent cause of personal injury or death is persons falling off and being run over. Do not permit others to ride on your tractor or backhoe. Only one person, the operator, should be on either machine when they are in operation.

Before leaving the tractor or backhoe, stop the engine, put all controls in neutral, engage the parking brake and remove the key from the ignition.

Operate the backhoe smoothly when lowering or lifting loads.

Stay off of slopes too steep for safe operation. Shift down before you start up or down a hill with heavy load. Avoid "free wheeling".

Travel speed should be such that complete control and machine stability is maintained at all times. Where possible, avoid operation near ditches, embankments and holes. Reduce speed when turning, crossing slopes, and on rough, slick or muddy surfaces.



SAFETY PRECAUTIONS



Never use your hand to check for suspected leaks under pressure. Use a piece of cardboard or wood for this purpose. Escaping hydraulic oil or diesel fuel leaking under pressure can have sufficient force to penetrate the skin and cause infection or other injuries. If this happens seek medical attention immediately.

To prevent personal injury, relieve all pressure before disconnecting any fluid lines.

Before applying hydraulic pressure, make sure all hydraulic connections are tight and components are in good condition.

Contact with overhead power lines can cause severe electrical burn or electrocution.

Make sure there is enough clearance between raised equipment and overhead power lines.

Add water to rear tires or rear wheel weights for increased stability.

A backhoe attachment should be transported in a low position at slow ground speeds.

Make turns slowly and use the tractor brakes cautiously. A loaded attachment in the raised position alters the center of gravity location of the machine and increases the possibility of mishaps.

Do not stand, walk or work under a raised backhoe attachment. Accidental movement of a control lever or leak in the hydraulic system could cause the backhoe to drop, or attachment to dump, causing severe injury.

Make sure to always park backhoe on a hard level surface with all safety devices engaged to prevent backhoe from falling and being damaged or injuring someone. Stands may be required.

When using a backhoe, be alert of bucket, boom and arm position at all times.

Only operators who have been specially trained in backhoe operation and fully understand this manual can operate the backhoe.

Keep hands, feet and clothing away from all moving parts. Wear close fitting clothing and appropriate safety equipment (Which includes, steel toed shoes, protective gloves, hard hat, safety glasses and dusk mask). Prolonged exposure to loud noise can damage hearing. Wear suitable approved hearing protection such as ear muffs or plugs. Operating equipment safely requires your full attention. Do not wear radio or music headphones. Secure hair above shoulder length.

You must be in good physical and mental health to operate the backhoe safely. Do not operate the backhoe when you are ill, fatigued or under the influence of any substance or medication that could affect your vision, coordination or judgment.

ALWAYS CALL BEFORE YOU DIG!

2. SAFETY DECALS

1. Keep safety decals clean and free of obstructing material
 2. Replace damaged or missing safety decals with new decals.
 3. If a component with a safety decal(s) affixed is replaced with a new part, ensure new safety decal(s) are attached in the same locations on the replacement components.
- Note some decals appear on both sides of backhoe. #'s 1, 2, 5, 6, and 12



4.



6.

5.



7.

2. SAFETY DECALS

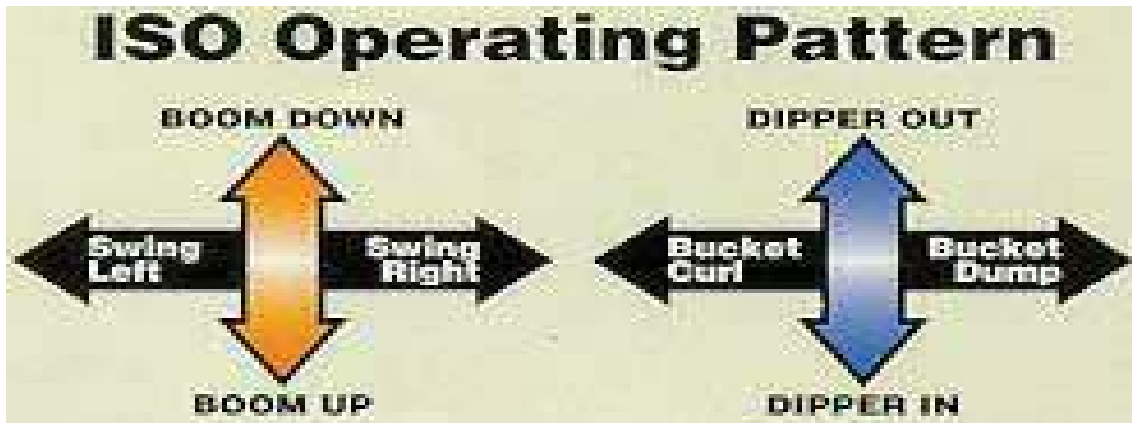


2. SAFETY DECALS

15.

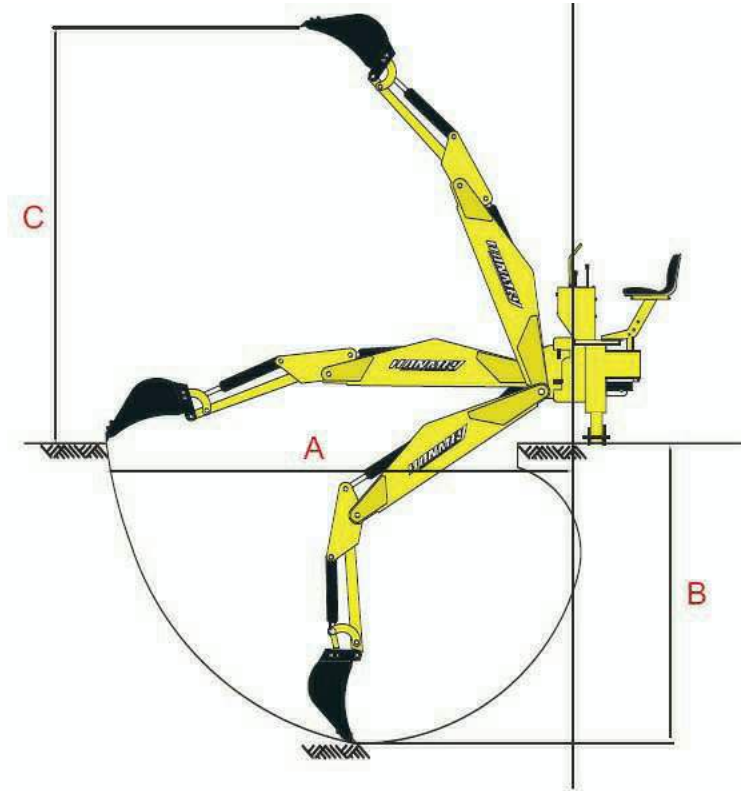


16.

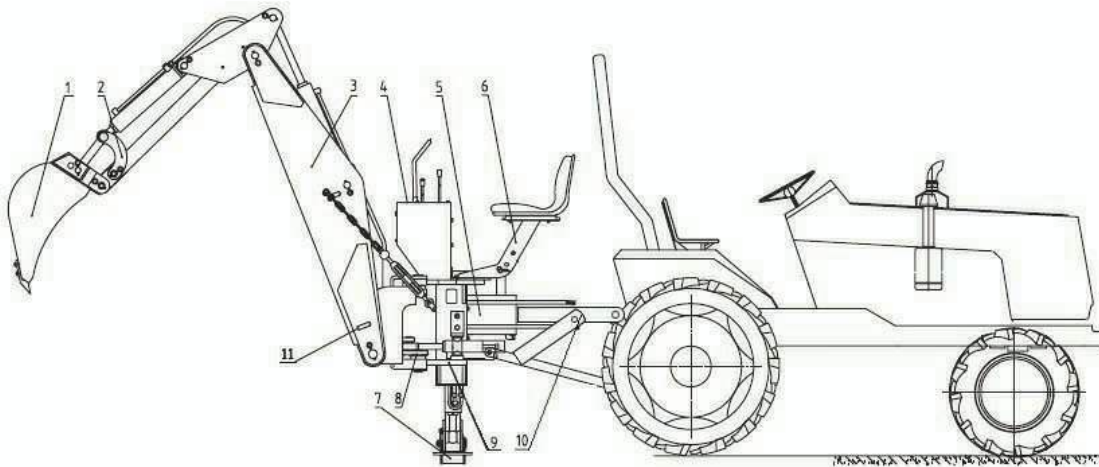


To order safety labels please contact Parts Department at 1-541-895-3083 or email cservice@betstproducts.com

3.FARMER HELPER BH SERIES BACKHOE SPECIFICATIONS




3.FARMER HELPER BH SERIES BACKHOE SPECIFICATIONS



Backhoe Components

1. Bucket
2. Staff
3. Boom
4. Joystick Controls
5. Hydraulic Tank
6. Seat
7. Stabilizers
8. Swing Cylinders
9. Tower
10. 3-Pt Connections
11. Transport Lock Pin

4 TRACTOR PREPARATION

 **Caution:** Do not exceed the manufacturer's rating for maximum gross weight. Refer to operator's manual, dealer or manufacture.

 **Caution:** Certain specific conditions may not permit safe use of the backhoe at backhoe rating or may require more careful restricted


4.1 ROPS System

The tractor must be equipped with an approved ROPS (Roll Over Protection System) to ensure adequate operator's protection.

4.2 Hydraulic System

The BH series backhoe hydraulic system is powered by the tractors Power Take Off, and are fitted with an in-built hydraulic pump, tank and in-line filter system. Check fluid level daily, ensure PTO shaft is greased and change hydraulic filter as required (refer to lubrication and maintenance).

BE SURE TO FOLLOW THE DETAILED STEPS OUTLINED IN ASSEMBLY & MOUNTING BEFORE USING THE BACKHOE!

 **Caution: The Tractor/Backhoe must only be operated with all safety equipment properly installed.**

4.3 Tire Inflation

Front tires must be maintained at the maximum recommended inflation to maintain normal tire profile with the added weight of backhoe/material. Rear tires must be maintained at equal pressure within the recommended tire inflation range. Unequal rear tire inflation can prevent backhoe attachment from controlling the ground across its full width.

4.4 Wheel Tread Settings

Tractor front wheel tread setting must be restricted to wheel tread spacing recommended in the tractor operator's manual.

4.6 Attachment

Ensure your tractor's 3 point linkage system is fitted with sway chains before attaching the backhoe. Failure to do this can cause the backhoe to swing when traveling potentially causing bodily injury or machine damage or failure. Inspect for any worn or damaged parts that are part of the connection between the tractor and backhoe. Replace if necessary with parts of suitable strength and quality.

4.6 Counter Weight

Add recommended ballast (either front weights or front end loader) to tractor's front end for increased stability. Refer to tractor operator's manual for specific recommendations on counter weighting tractor.

5. BACKHOE OPERATION



Caution: The Tractor/Backhoe should only be operated with all safety equipment properly installed. Keep assistants or bystanders at a safe distance from the equipment operating area.

5.1 Precautionary Notes:

- Read and understand this manual to avoid accidents.
- Check the hydraulic fitting lines to be correct and set tightly.
- Maintain and repair (if it is needed) the parts or assemblies, check bolts and pins to be sure they are positioned tightly.
- Check tractor with the tractor operator's manual that it can be prepared for operating.
- Warm up and operate the tractor and backhoe carefully. Purge any air in the hydraulic lines and cylinders by fully cycling all cylinders several times. Check the fluid level in tank each after doing this.
- Check hydraulic level in the tank to the specified level.
- Do not operate the hydraulics when not seated in the backhoe operator's seat.
- Keep all assistants out of area of operation.
- Do not operate rapidly.
- Do not allow riders to be on the tractor while operating.

Important:

Use tractor engine speed that your experience permits. At first set PTO RPM of the tractor to slow.

Do not use the boom, dipper arm, swing or stabilizers to lift, push or pull objects. Use only to maneuver and operate the bucket.

Important:

Practice quickly turning off the engine or stopping the backhoe immediately in case of an emergency situation.

Important:

Do not operate while the rear tractor wheels are off the ground by stabilizer. It is dangerous to operate the backhoe while rear wheels are off the ground.

Position vehicle so that the backhoe is as near as possible and in such a direction as to minimize the amount of backhoe turning required to dump. Keep the unit clean and perform regular service.

5. BACKHOE OPERATION

We urge you to follow this advice: Failure to do so will result in a voided warranty, personal injury or damage to equipment.

5.1

1. Read and understand this manual as well as the tractor operator's manual.
2. Remember and observe the safety precautions brought to your attention in this manual, the tractor manual and on the machinery itself.
3. Use good common sense in the everyday operation of this unit. Safety recommendations can never be all-inclusive and you are responsible for watching out for and avoiding unsafe conditions.
4. Never exceed the limits of a piece of machinery. If its ability to do a job, or to do so safely, is in question, don't try it.
5. Don't hurry the learning process or take the unit for granted. Ease into it and become familiar with your new backhoe.



Caution: When lowering a heavy load ease it downward slowly. Never drop a loaded attachment and "catch it hydraulically" Stopping a load after it has gained downward momentum places undue strain on the unit and may void your warranty causing unnecessary damage to the backhoe/tractor or even worse personal injury.



Caution: "Before disconnecting hydraulic lines relieve all hydraulic pressure. Escaping hydraulic pressure can have sufficient force to penetrate the skin causing serious personal injury. If injured by escaping hydraulic oil seek medical attention immediately.



Caution: Do not operate the backhoe if the fittings are leaking or if the hoses are damaged. A sudden line burst would cause the boom or upper arm bucket to drop suddenly voiding the warranty causing damage to the tractor/backhoe or injury to personnel.

5.2 Initial Backhoe Operation

Before operating the backhoe, fully raise and lower the boom, arm, swing and stabilizers two or three times. Then raise the bucket above the ground and cycle the bucket cylinders three times. Lower the bucket to the ground. Check the tractor hydraulic oil and fill to the correct oil level.



Caution: Before leaving the machine, stop the engine, remove the key. Place all controls in neutral, and either set the parking brake or place the tractor in park as equipped.

Always keep cylinders in a retracted position when backhoe is not in use to guard against rust and contamination which may cause damage to the cylinder rods or hydraulic system. Also, lock arms and boom into storage position.

5.3 Cold Weather Operation

For smooth operation in cold weather, let the tractor warm up. Slowly cycle all of the cylinders several times to warm the oil in the hydraulic system. The backhoe may operate erratically until the hydraulic oil has warmed to operating temperatures.



CAUTION: Operate controls only when seated in the operator's seat with seat belt on.

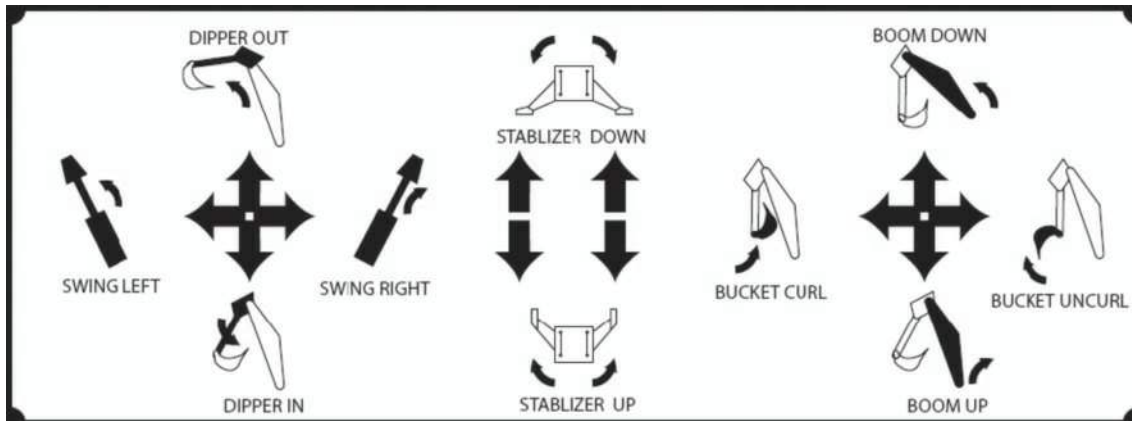
5.4 Backhoe Hydraulic Controls

The backhoe hydraulic valve features 4 control levers. Refer to the diagram below for backhoe control functions. "Left" and "Right" are determined by the direction the operator is facing when seated in the backhoe. The diagram is located on the rear of the control valve bracket and is visible when operating the valve.



- A. Boom & Bucket Control
- B. Right Stabilizer Control
- C. Left Stabilizer Control
- D. Dipper Arm & Swing Control

5.4 Backhoe Hydraulic Controls*



-Stabilizer Control Lever is 2 – Way of moving stabilizers up & down

- Dipper Arm & Swing Control Lever is 4 – Way of moving Dipper out or in & Swing left or right

- Boom & Bucket Control Lever is 4 – Way of moving Boom up or down & bucket curled or uncurled.

Practice is needed to eliminate excess motion and increase operating efficiency.

Do not dig near the stabilizers as this can cause unsafe working conditions or accident.

Do not lift the tractor rear wheels off the ground with stabilizers.

- Controls are set to the ISO standard if you desire SAE pattern, contact Betstco support for information on how to change control pattern to SAE.

55 TRAVELING SWING AND BOOM LOCK



When transporting or dismounting backhoe, you must lock the backhoe's swing and boom. Position boom straight back and then slide pin through holes in boom & swing frame.

5.6 TRAVELING STABILIZER CLIP LOCKS

When transporting or dismounting backhoe, you must lock stabilizer lock clips. Raise stabilizers and attach the lock clips.



6. BACKHOE MOUNTING

6.1 BACKHOE ASSEMBLY

-After removing from crate.

-You may need suitable support to lift and hold backhoe behind 3 pt during assembly.

-Attach filter bracket to bracket on hydraulic tank, this may require the loosening of the hoses to acquire needed rotation, then re-tighten the hoses.

-Remove cover of hydraulic tank and fill with tractor hydraulic fluid to level indicator on side of tank.



USE EXTREME CAUTION DURING CONNECTION TO TRACTOR

- The 3-PT mounting frame is adjustable to suit most tractor models with Cat 1 3-Pt linkage.
- 1. Connect tractor 3-Pt arms to lower mounting frame pins.
- 2. Connect PTO and move bucket down to lift boom to move main frame into vertical position. Lower stabilizers to balance backhoe. Raise lift arms until 3-pt top link frame will be close to horizontal with top link connection on tractor. See below for PTO Connection details.
- 3. Connect and adjust top link assembly. 1 bolt under tower (longest), 2 bolts in middle (medium length), and 1 bolt to top link.
- 4. Connect left hand and right hand lock out brace to the correct hole and secure the bolt and nut tightly (shortest bolts).
- 5. Lower and manually lock the tractor 3-pt position/Draft Lever. (See Tractor's Operation Manual)
- Attach seat with bolts & nuts provided
- Operate all cylinders in and out 2 times. Check oil level again & fill as needed
- Attach all safety labels
- Grease all 28 points as detailed below in lubrication section **IF YOU HAVE ANY QUESTIONS DURING ASSEMBLY** contact the company you purchased from. If they cannot help you free and fee support is available at Betst Products, llc, Support Department. Available by phone or email. Open M - F 8 AM - 5 PM PST. Email cservice@betstproducts.com or by phone at (541)895-3083.



6.2 PTO CONNECTION

Ensure PTO shaft is correct length, correct PTO shaft length must have a minimal overlap of 2” in drive position. See PTO Driveline manual for proper steps to reduce overall PTO driveline length. Connect PTO shaft to tractor, PTO output shaft and backhoe hydraulic pump shaft. Check PTO shaft has suitable angle prior to operation. Angle of PTO shaft universal must be less than 25 degrees, to prevent major damage.



CAUTION: Backhoe should be mounted to the tractor three point linkage.



CAUTION: Never store backhoe without bucket attached to the backhoe.

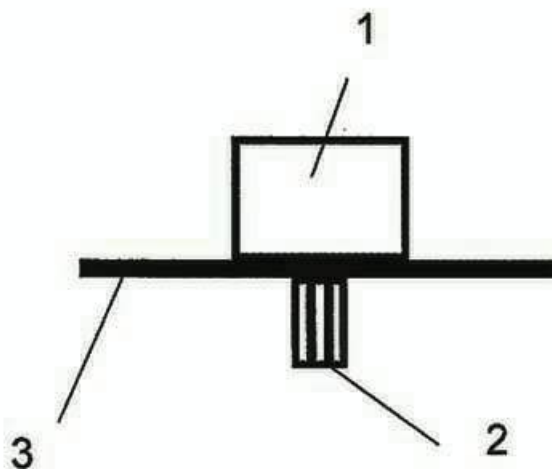
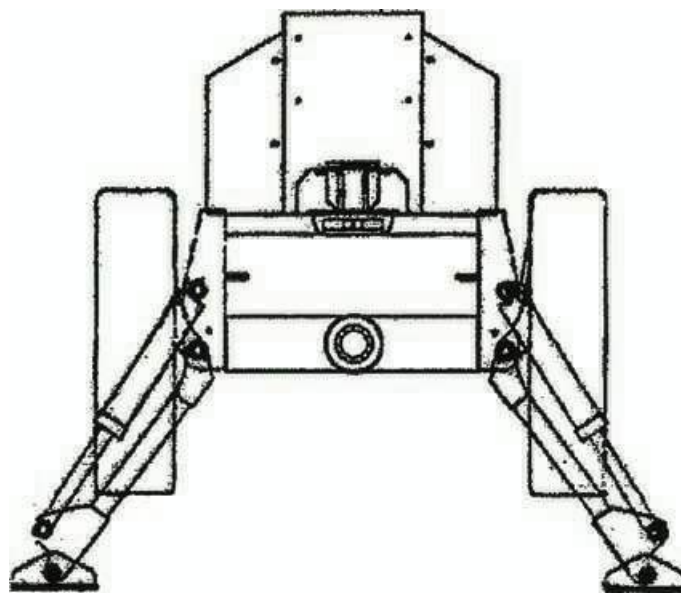


CAUTION: Never raise 3-PT position/draft lever while backhoe is connected, damage could occur to linkage and hydraulic system or void the warranty. Use mechanical means to secure levers in down positions.



CAUTION: It is Owner/Operator responsibility to ensure that the tractor 3-PT link & Hydraulic lift cover area is strong enough to accept 3-PT rigid connection and backhoe while in operation as extra forces are exerted through top link. No liability can be accepted for damage to tractor.

7. HYDRAULIC PUMP ASSEMBLY



SPECIFICATION

- 1. Hydraulic Pump
- 2. Hydraulic Pump Shaft
- 3. Bracket

PARTNO.

- CBF-F425-ALPL
- 1 3/8:6 Splines

QTY

- 1
- 1
- 1

8. LUBRICATION AND MAINTENANCE



Total of 28 Grease Points

Use Lithium Based All Purpose Grease

Hydraulic Oil – Use Standard Tractor Hydraulic Fluid

Item	Service	Service Interval
Hydraulic System Oil Level	Check	Daily / 10 Hours
Hydraulic System Oil / Filter	Replace	Every 50 Hours
Tyre Inflation	Check	Weekly / 50 Hours
Backhoe Pivot Points	Lubricate / Grease	Daily / 10 Hours
Backhoe Hydraulic Lines, Hoses, Connections	Check for leaks, wear	Daily / 10 Hours
Boom, Arm, Swing and Bucket cylinder rod packings	Check for seepage, service as needed	Daily / 10 Hours
Pivot Pin Bolts and Dust Covers	Check, replace if missing	Daily / 10 Hours
Pin Wear	Check, replace if necessary	Daily / 10 Hours
Backhoe Mount Hardware	Check visually	Daily / 10 Hours
Bolt and Nut Release	Re-torque	Every 25 Hours

8.0 LUBRICATION & MAINTENANCE



CAUTION: Do not perform service or maintenance operations with backhoe raised of the ground.

For additional access to tractor components remove backhoe.

IMPORTANT : Lower the backhoe to the ground and relieve pressure in the backhoe hydraulic lines prior to performing any service or maintenance operations on the tractor or backhoe.



CAUTION: Escaping fluid under pressure can have sufficient force to penetrate the skin causing serious injury before disconnecting lines be sure to relieve all pressure. Before applying pressure to the system be sure all connections are tight and that lines and hoses are not damaged. Fluid escaping from a very small hole can be almost invisible. Use a piece of cardboard or wood rather than your hands to search for suspected leaks. If injured by escaping fluid seek medical attention immediately. Serious infection or reaction can develop if correct medical treatment is not administered immediately.

Refer to “Lubrication and Maintenance Chart” for quick reference to maintenance operations.



CAUTION:: Do not operate the backhoe if any fittings are leaking or if the hoses are damaged. A sudden line burst could cause the boom dipper arm or bucket to drop suddenly causing damage to the tractor or backhoe or injury to personnel.



CAUTION: Operate the backhoe from the operator seat only



CAUTION: Do not stand or walk under a raised backhoe. Accidental movement of control lever or leak in hydraulic system could cause boom or dipper arm to drop causing severe injury.



CAUTION: To help prevent roll over adjust the rear wheels to their widest setting. To maximize stability refer to your tractor operator’s manual for recommendations.

Note: when checking hydraulic system oil level, the backhoe should be on the ground and bucket fully retracted (all cylinders in retracted position).

Grease all backhoe pivot points daily (10 Hours).

Inspect hydraulic hoses, connections, control valve and cylinders for evidence of leakage.

Tractor tires should be maintained at maximum recommended inflation to maintain normal tire profile with added weight of backhoe/material. Unequal rear tire inflation can result in bucket not being level to the ground.

9. TROUBLE SHOOTING

This trouble shooting chart is provided for reference to possible backhoe operational problems. Determine the problem that best describes the operational problem being experienced and eliminate the possible causes as listed by following the correction procedures.

PROBLEM	Possible Cause	Correction
Swing, Boom, Dipper Arm and Bucket Cylinders	Low hydraulic fluid level	Check and replenish hydraulic fluid.
	Hydraulic hoses connected improperly	Check and correct hydraulic hose connections.
	Hydraulic hoses to / from control valve blocked	Check for damage (kinked) hoses, etc.
	Backhoe control valve or tractor main relief valve stuck open	Check system pressure, Repair or replace relief valve. Refer to the Tractor Operator's Manual.
	Low system pressure supplied from hydraulic pump	Check system pressure. Repair or replace pump.
	Control valve linkage broken	Inspect. Repair as required.
	Quick disconnect coupler(s) are not fully connected or "Flow Check"	Check coupler connections. Replace coupler(s) if necessary.
	Hydraulic Hose or tube line blockage	Check for evidence of damage to hoses or tube lines that would block flow of oil between cylinders and control valve.
	Cylinder piston assembly defective (not sealing)	Check cylinders for internal leakage as described in service section under cylinder leakage tests.
	Control Valve blockage	Inspect for blockage.
	Disassemble valve if necessary.	
	Safety lock pins (2) not removed	Remove and store safety pins.
	Stabilizer legs safety clip not released	Release the clips.

9. TROUBLE SHOOTING

PROBLEM	Possible Cause	Correction
Cylinders operate in wrong direction relative to control valve lever position.	Hydraulic Hoses connected incorrectly.	Correct hydraulic hoses connections.
Slow or erratic move of cylinders (Noisy operation of cylinders)	Low hydraulic fluid level	Check and replenish hydraulic fluid.
	Cold hydraulic fluid	Allow hydraulic system to warm up to operating temperature
	Hydraulic oil viscosity too heavy or Incorrect oil	Check oil number and viscosity, refill correct hydraulic oil.
	Engine R.P.M too slow (hydraulic pump R.P.M too slow).	Increase engine speed to obtain satisfactory backhoe operation.
	Excessive weight in bucket. Material weight exceeds maximum specified backhoe capacity.	Reduce material load. (Digging load)
	Control valve linkage binding / defective	Check control valve linkage and repair if work / defective.
	Aeration of hydraulic fluid	Refer to "Aeration of hydraulic Fluid"
	Quick disconnect coupler restriction or coupler "Flow checks"	Check coupler connections. Repair or replace.
	Hydraulic hose or tube line restriction hoses / Tube line) Kinked or pinched	Check hoses and tubelines for evidence of restriction.
	Boom, Dipper arm or Bucket cylinder piston assembly leakage.	Check cylinders for leakage. Repair as needed.
	Relief valve erratic or set below specifications	Check and reset relief valve. Setting as needed.
Control valve leaking internally. (bypassing fluid within valve).	Replace control valve and recheck operation.	

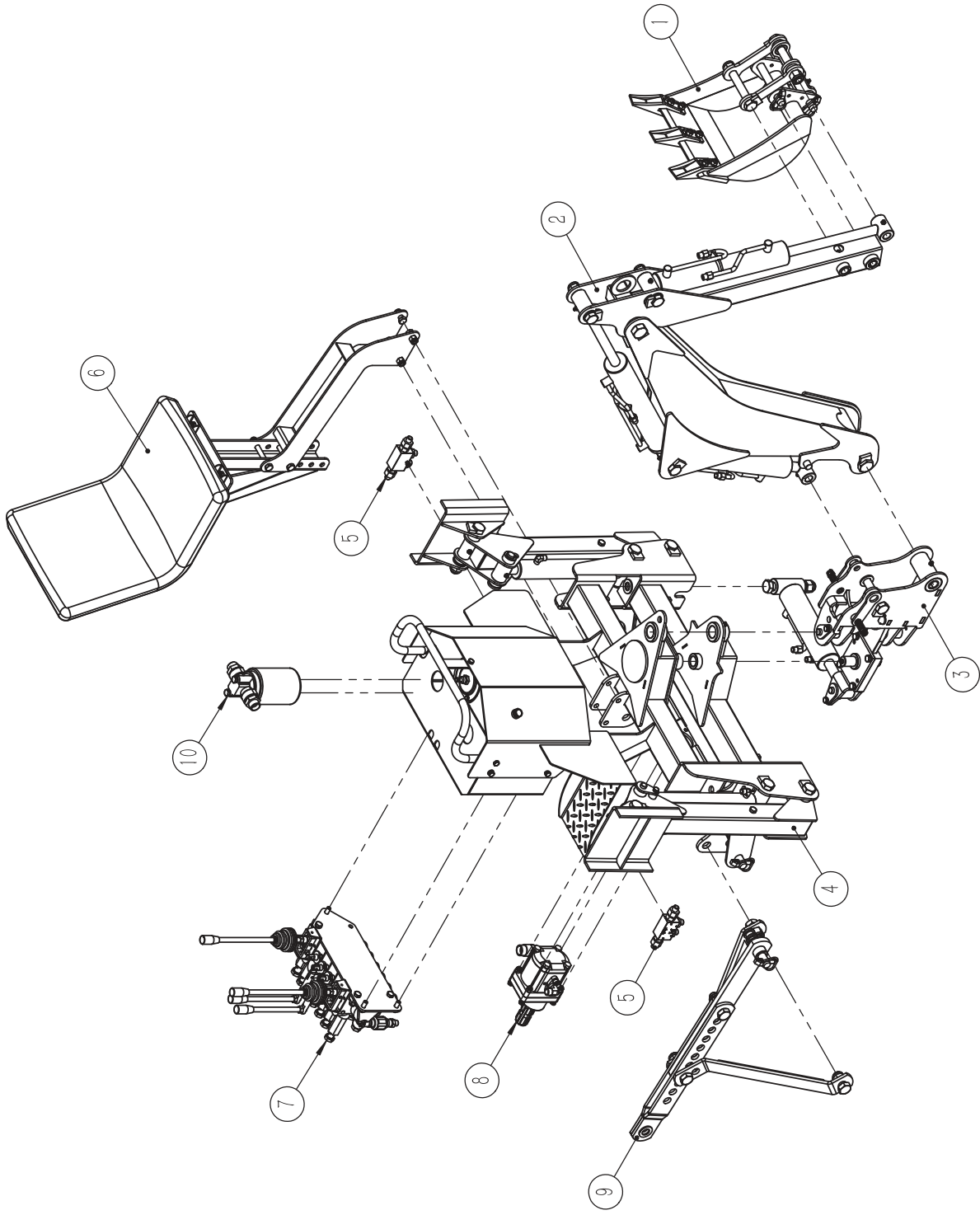
9. TROUBLE SHOOTING

PROBLEM	Possible Cause	Correction
Inadequate lifting capacity	Engine R.P.M too slow	Increase engine R.P.M
	Excessive load. Material loading exceeds specified backhoe capacity.	Reduce Load
	Relief valve setting below specifications	Check and reset relief valve setting as needed.
	Bucket, Boom and Dipper arm cylinder piston assembly leakage	Check Cylinders for leakage. Repair as needed.
	Control Valve leaking internally	Replace control valve and recheck operation.
	Hydraulic pump defective	Refer to “Hydraulic Pump Capacity Inadequate”
Aeration of Hydraulic Fluid (Generally indicated by foamy appearance of fluid)	Low Hydraulic fluid level	Check and refill hydraulic system to proper level.
	Air leing into suction side of hydraulic pump	Check for loose or defective connections between reservoir and hydraulic pump.
	Hydraulic fluid foaming due to improper hydraulic oil usage	Refer to tractor Operator’s Manual and replace hydraulic oil using recommended hydraulic oil
System relieve valve squeals	Cold Hydraulic Fluid	Allow hydraulic fluid to warm up to operating temperature.
	Hydraulic Oil viscosity too heavy or Incorrect Oil	Check Oil Number and Viscosity, refill correct hydraulic oil
	Excessive load in bucket. Loading exceeds specified backhoe capacity	Reduce Load
	Relief Valve setting below specifications.	Check and reset valve setting as needed.
	Hydraulic hose, tube line or quick disconnect coupler restriction	Check for evidence of restriction in the hydraulic oil flow. Repair or replace defective components.

9. TROUBLE SHOOTING

PROBLEM	Possible Cause	Correction
Backhoe Drops with valve spool in “centred” position (no external oil leakage evident). Note: A gradual drop over an extended period of time is a normal condition.	Cylinder piston assembly leakage	Check cylinders for leakage
	Control valve internal leakage	Replace control valve and recheck
Control Valve spool(s) will not return to centred position	Control lever linkage binding	Determine origin of binding and repair
	Control valve spool centring is broken	Replace Centring Spring
	Control valve spool binding in valve body spool bore	Disassemble valve for inspection and repair.
External Hydraulic fluid Leakage	Loose Hydraulic connection	Tighten loose connections
	Defective hydraulic hose, tube line, adapter fitting or adapter fitting o-ring.	Check for origin of oil leak and replace defective part.
	Control valve o-ring defective	Replace defective o-rings
	Control valve spool or body damaged or worn	Replace control valve
	Cylinder rod packing set leakage	Check cylinders for leakage. Repair as needed.
Hydraulic pump capacity inadequate	Cold Hydraulic fluid	Allow hydraulic fluid to warm up to operating temperature.
	Engine R.P.M too slow	Increase engine R.P.M
	Low hydraulic fluid supply	Refer to Tractor Operator’s Manual for service recommendations.
	Hydraulic hose restriction	Check for evidence of restriction in hydraulic hoses.
	Hydraulic pump defective	Refer to Tractor Operator’s Manual for recommended service procedures.
	Replace hydraulic pump if determined to be defective	
Cylinder Rod bend when cylinders extended	Excessive shock load on cylinders during transport	Replace defective parts. Review and observe proper and safe operational practices.

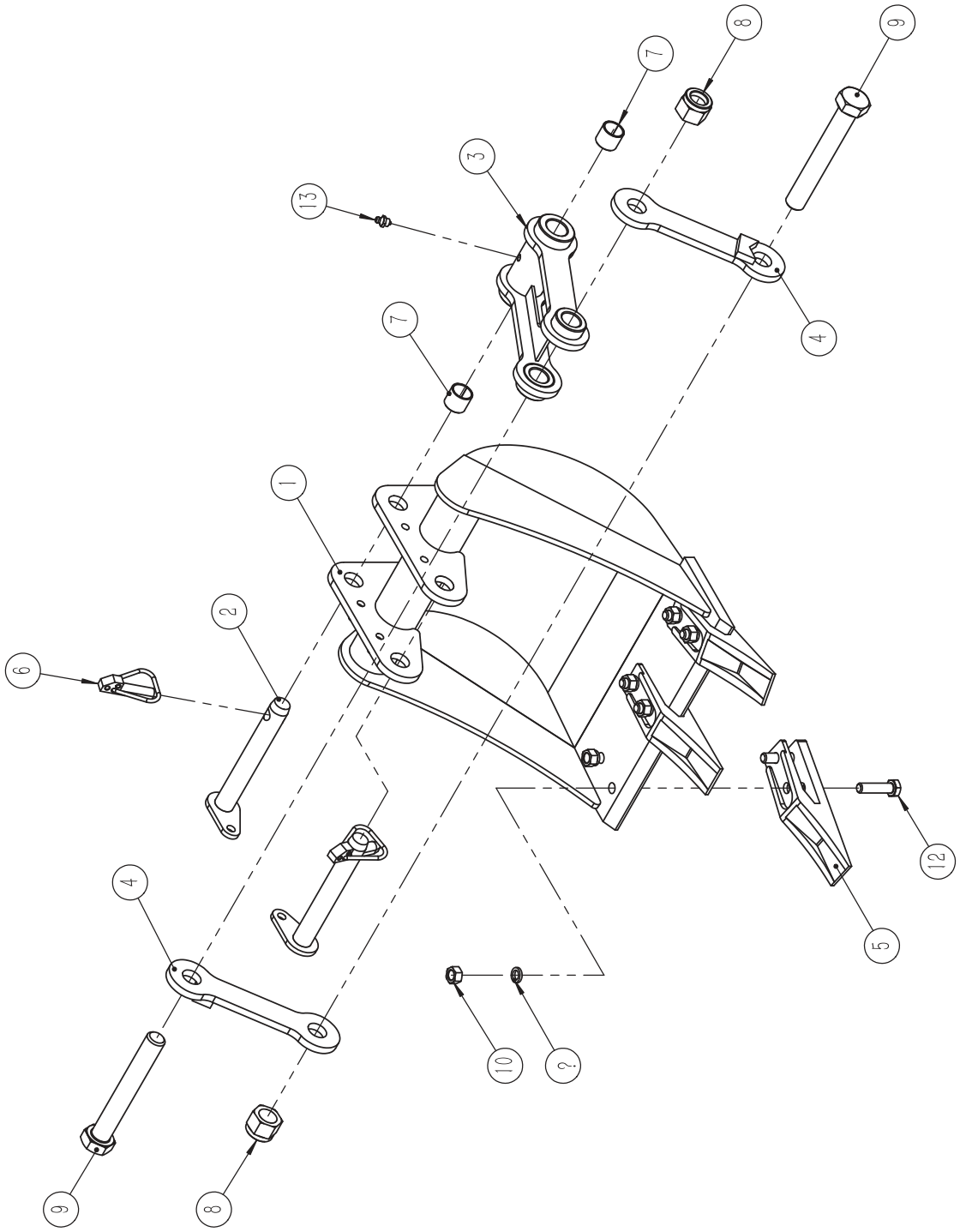
Exploded View of Backhoe—BHM155 / BHM185



Parts List of Backhoe—BHM155 / BHM185

NO.	PART NO.	名称	Name & Specifications	QTY
1	BHM155.001	挖斗总成	Bucket Assy	1
2	BHM155.002	臂总成	Boom Assy	1
	BHM185.002			
3	BHM155.003	摆座总成	Swing Assy	1
4	BHM155.004	底座总成	Base Assy	1
5	BHM155.005	单向阀总成	Check valve Assy	2
6	BHM155.006	座椅总成	Seat Assy	1
7	BHM155.007	阀总成	Valve Assy	1
8	BHM155.008	泵总成	Pump Assy	1
9	BHM155.009	悬挂总成	Lifting Assy	1
10	BHM155.0010	滤油器总成	Oil filter Assy	1

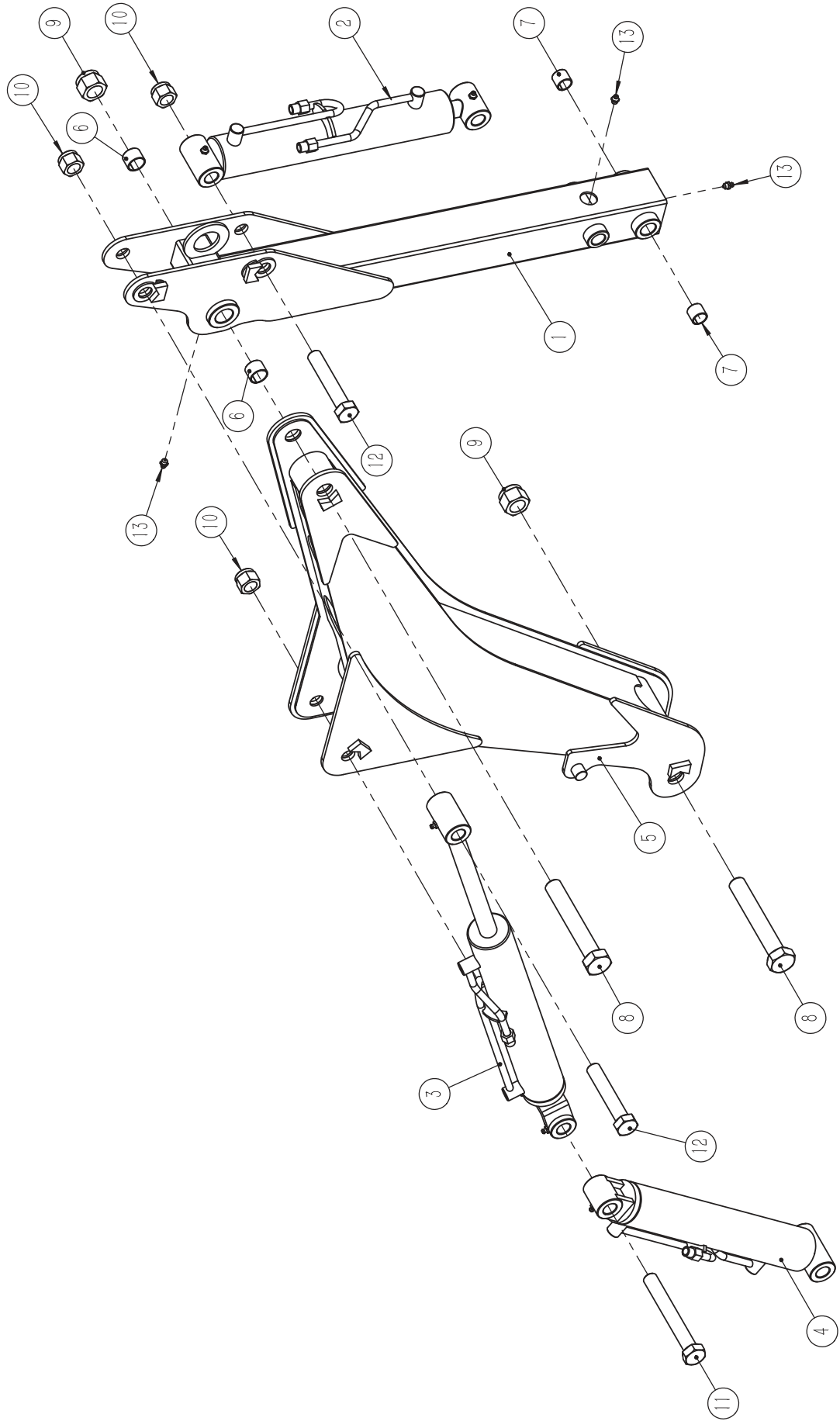
Exploded View of Bucket Assy



Parts List of Bucket Assy

NO.	PART NO.	名称	Name & Specifications	QTY
1	BHM95.011	挖斗焊合件	BUCKET weldment	1
2	BHM95.012	挖斗销焊合件	BUCKET PIN weldment	2
3	BHM95.013	内连接板焊合件	CONNECT BOARD WELDMENT	1
4	BHM95.014	外连接板焊合件	SWING BOARD WELDMENT	2
5	BHM95.101	铲齿	BUCKET TEETH	3
6	Lock Pin-12	锁销12	LOCKING PIN 12	2
7	SF-2-23x20x20	无油衬套23x20x20	Sleeve 23x20x20	2
8	GB889. 1-M20	锁紧螺母M20	Lock nut M20	2
9	GB5782-M20 x 140	螺栓M20 x 140	Bolt M20 x 140	2
10	GB6170-M10	螺母M10	Nut M10	6
11	GB93-10	弹垫圈10	Spring washer 10	6
12	GB5783-M10 x 40	螺栓M10 x 40	Bolt M10 x 40	6
13	JB / T7940. 1-1995	油杯8	Oil cup 8	1

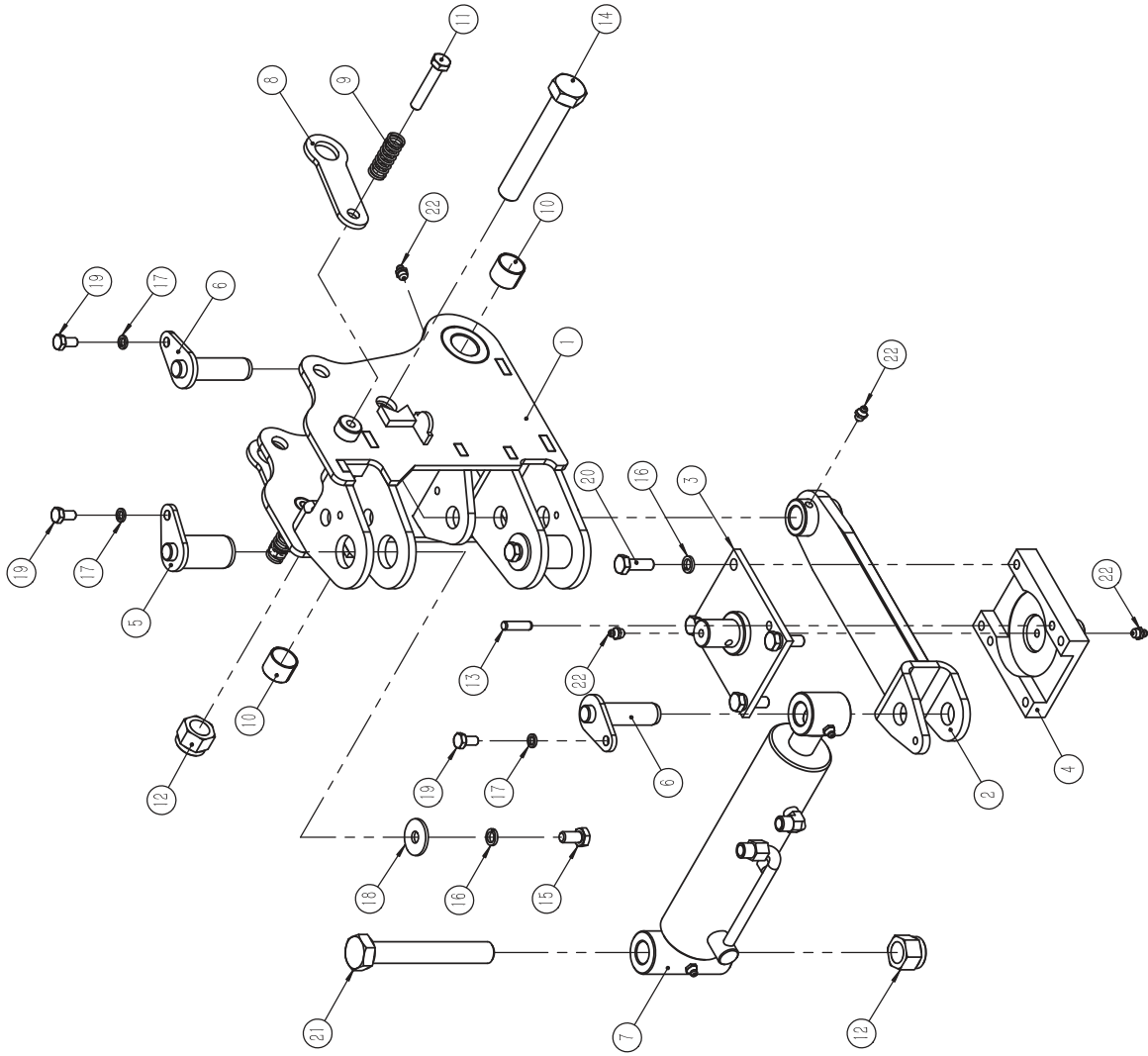
Exploded View of Boom Assy



Parts List of Boom Assy

NO.	PART NO.	名称	Name & Specifications	QTY
1	BHM95.015	小臂焊合件	FRONT ARM WELDMENT	1
	BHM185.015			
2	BHM95.016	挖斗油缸	BUCKET CYLINDER	1
3	BHM95.017	小臂油缸	FRONT ARM CYLINDER	1
	BHM185.017			
4	BHM95.018	大臂油缸	BOOM CYLINDER	1
	BHM185.018			
5	BHM95.019	大臂焊合件	BOOM WELDMENT	1
	BHM185.019			
6	SF-2-27x24x20	无油衬套27x24x20	Sleeve 27x24x20	2
7	SF-2-23x20x20	无油衬套23x20x20	Sleeve 23x20x20	2
8	GB5782-M24 × 150	螺栓M24 × 150	Bolt M24 × 150	2
9	GB889. 1-M24	锁紧螺母M24	Lock nut M24	2
10	GB889. 1-M20	锁紧螺母M20	Lock nut M20	3
11	GB5782-M20 × 150	螺栓M20 × 150	Bolt M20 × 150	1
12	GB5782-M20 × 110	螺栓M20 × 110	Bolt M20 × 110	2
13	JB / T7940. 1-1995	油杯8	Oil cup 8	3

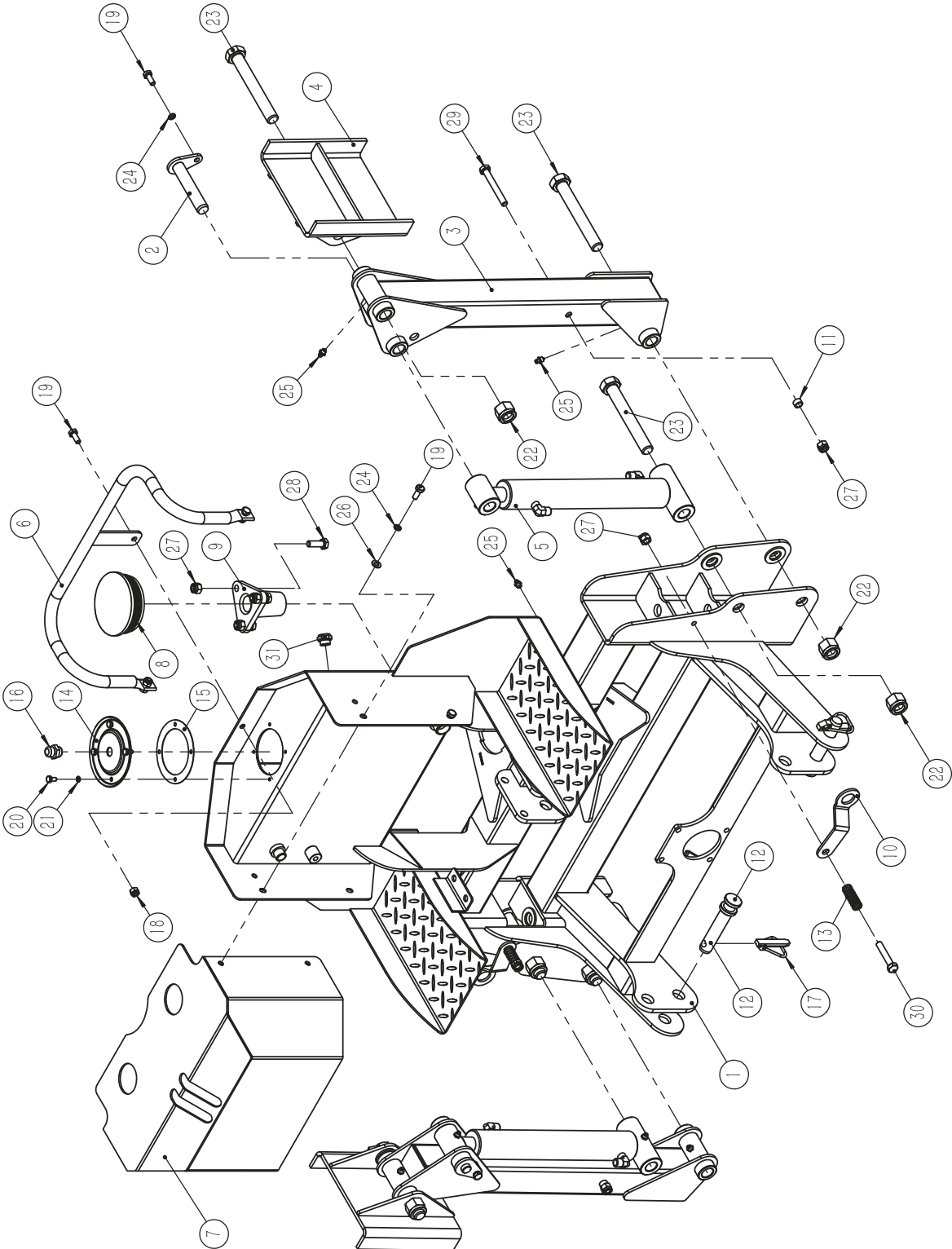
Exploded View of Swing Assy



Parts List of Swing Assy

NO.	PART NO.	名称	Name & Specifications	QTY
1	BHM95.020	摆座焊合件	Swing frame weldment	1
2	BHM95.021	摆臂焊合件	SWING ARM WELDMENT	1
3	BHM95.023	摆臂上支座焊合件	SLIP BRACKET COVER weldment	1
4	BHM95.024	摆臂下支座焊合件	SLIP BRACKET WELDMENT	1
5	BHM95.025	摆座销焊合件	PIN weldment	2
6	BHM95.026	摆臂销焊合件	SWING ARM AXIS WELDMENT	2
7	BHM95.032	摆座油缸	SWING CYLINDER	1
8	BHM95.102	大臂拉板	Pull Plate of Boom	2
9	BHM95.110	压簧	Spring	2
10	SF-2-27x24x20	无油衬套27x24x20	Sleeve 27x24x20	2
11	GB5782-M10×55	螺栓M10×55	Bolt M10×55	2
12	GB889.1-M20	锁紧螺母M20	Lock nut M20	2
13	GB119-A8×30	圆柱销A8×30	COLUMN PIN A8×30	2
14	GB5782-M20×130	螺栓M20×130	Bolt M20×130	1
15	GB5783-M10×20	螺栓M10×20	Bolt M10×20	2
16	GB93-10	弹垫圈10	Spring washer 10	6
17	GB93-8	弹垫圈8	Spring washer 8	4
18	GB5287-10	特大垫圈10	Extra large washer 10	2
19	GB5783-M8×16	螺栓M8×16	Bolt M8×16	4
20	GB5783-M10×30	螺栓M10×30	Bolt M10×30	4
21	GB5782-M20×140	螺栓M20×140	Bolt M20×140	1
22	JB/T7940.1-1995	油杯8	Oil cup 8	4

Exploded View of Base Assy

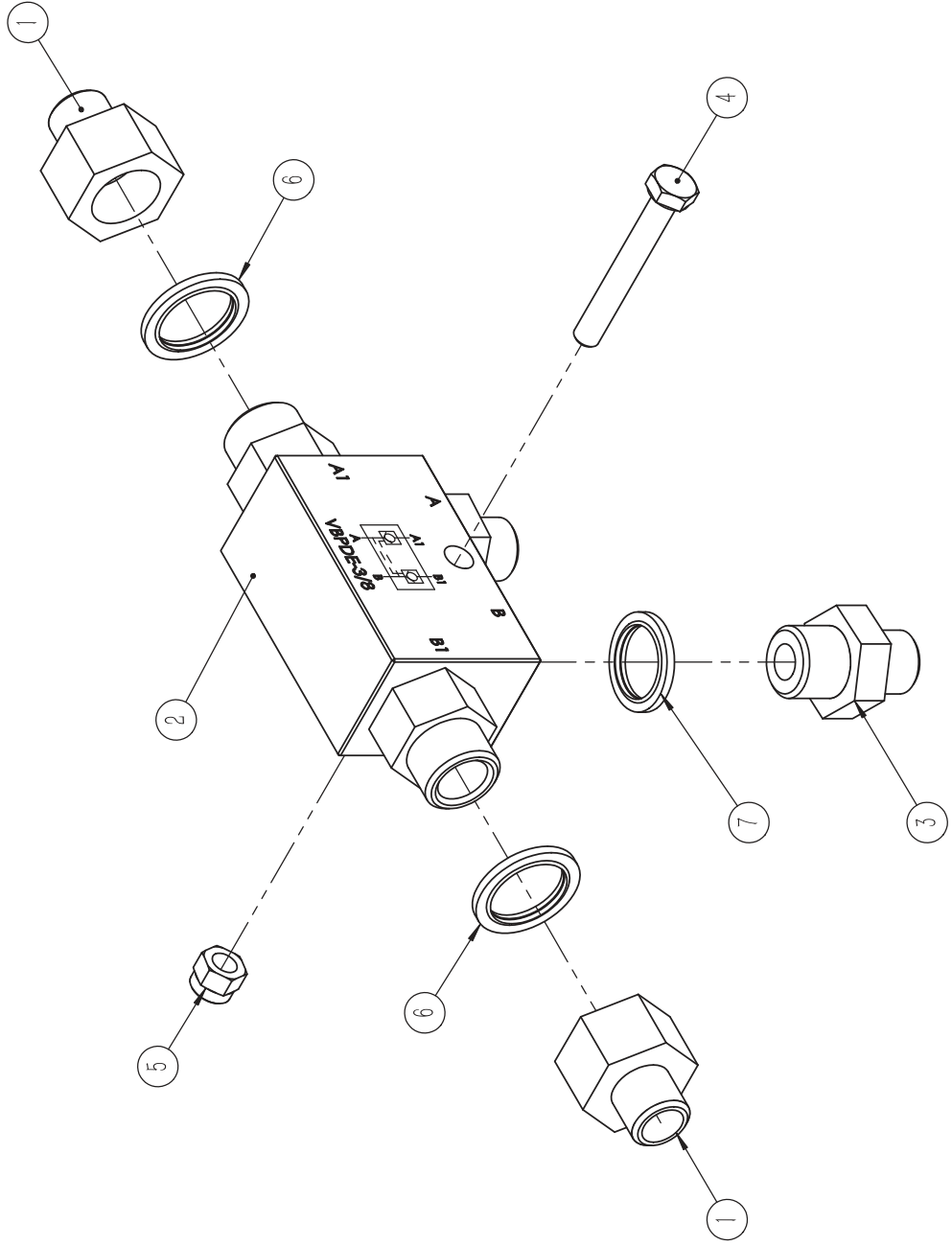


Parts List of Base Assy

NO.	PART NO.	名称	Name & Specifications	QTY
1	BHM95.022	底座焊合件	Base weldment	1
2	BHM95.027	撑腿销焊合件	Pin shaft weldment	2
3	BHM95.028	撑腿焊合件	Stabilizer rod weldment	2
4	BHM95.029	支脚焊合件	Supporting leg weldment	2
5	BHM95.031	撑腿油缸	Cylinder for supporting leg	2
6	BHM95.034	扶手焊合件	Rod weldment	1
7	BHM95.035	控制柜盖板焊合件	Rear cover weldment	1
8	BHM95.103	橡胶盖	Rubber cover	1
9	BHM95.104	摆臂座套	SLIP BRACKET SEAT	1
10	BHM95.105	撑腿拉板	Fix plate for stabilizer	2
11	BHM95.106	隔套	Copper bush	2
12	BHM95.107	悬挂销	Pin shaft	2
13	BHM95.110	压簧	Spring	2
14	BHM95.111	油箱盖板	Cover for oil tank	1
15	BHM95.112	纸垫	Seal washer for cover of oil tank	1
16	Vent-G3/8	排气螺栓G3/8	Oil plug G3/8	1
17	Lock Pin-12	锁销12	LOCKING PIN 12	2
18	GB889. 1-M8	锁紧螺母M8	Lock nut M8	3
19	GB5783-M8×20	螺栓M8×20	Bolt M8×20	9
20	GB5783-M6×12	螺栓M6×12	Bolt M6×12	4
21	GB93-6	弹垫圈6	Spring washer 6	4
22	GB889. 1-M20	锁紧螺母M20	Lock nut M20	6
23	GB5782-M20×150	螺栓M20×150	Bolt M20×150	6
24	GB93-8	弹垫圈8	Spring washer 8	6

25	JB / T7940. 1-1995	油杯8	Oil cup 8	6
26	GB97. 1-8	平垫圈8	Plain washer 8	3
27	GB889. 1-M10	锁紧螺母M10	Lock nut M10	7
28	GB5783-M10 × 30	螺栓M10 × 30	Bolt M10 × 30	3
29	GB5782-M10 × 80	螺栓M10 × 80	Bolt M10 × 80	2
30	GB5782-M10 × 55	螺栓M10 × 55	Bolt M10 × 55	2
31	Oil cup-G3 / 8	油标G3/8	Oil cup G3 / 8	1

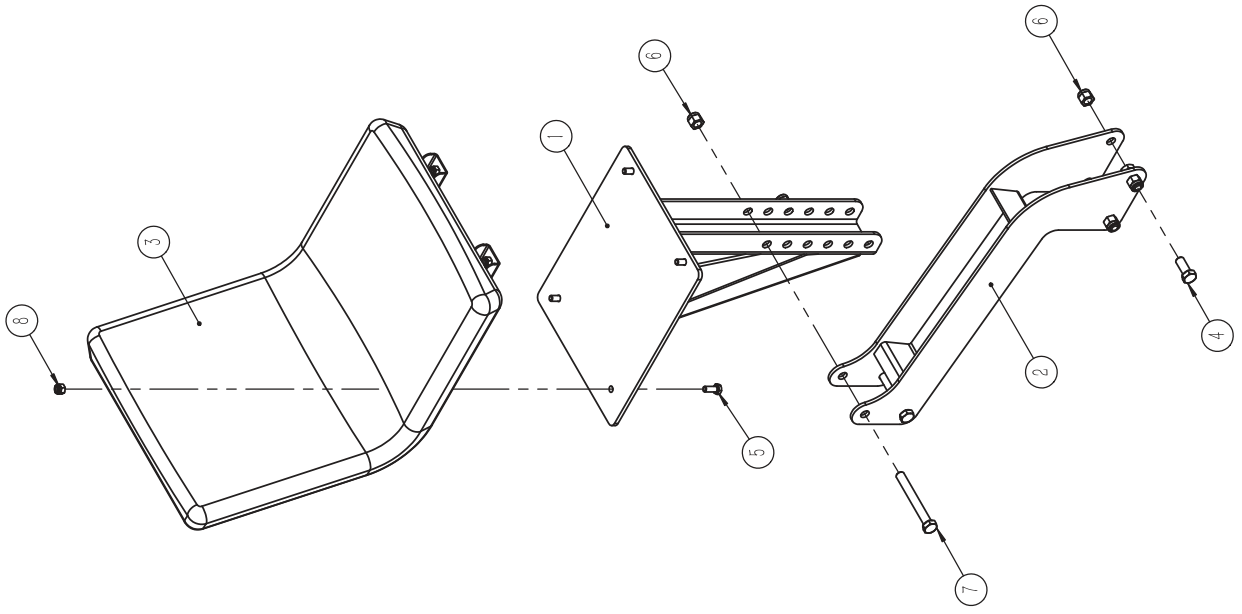
Exploded View of Check valve Assy



Parts List of Check valve Assy

NO.	PART NO.	名称	Name & Specifications	QTY
1	BHM95.118	接头14H-18内	Coupling 14H-18M	2
2	VBPDE-G3 / 8	双向液控单向阀	Check valve	1
3	16-14H	接头16-14H	Coupling 16-14H	2
4	GB5782-M6 × 45	螺栓M6 × 45	Bolt M6 × 45	1
5	GB889. 1-M6	锁紧螺母M6	Lock nut M6	1
6	GB982-18	组合密封垫圈18	Hollow bolt M18x1.5	2
7	JB982-16	组合密封垫圈16	Hollow bolt M16x1.5	2

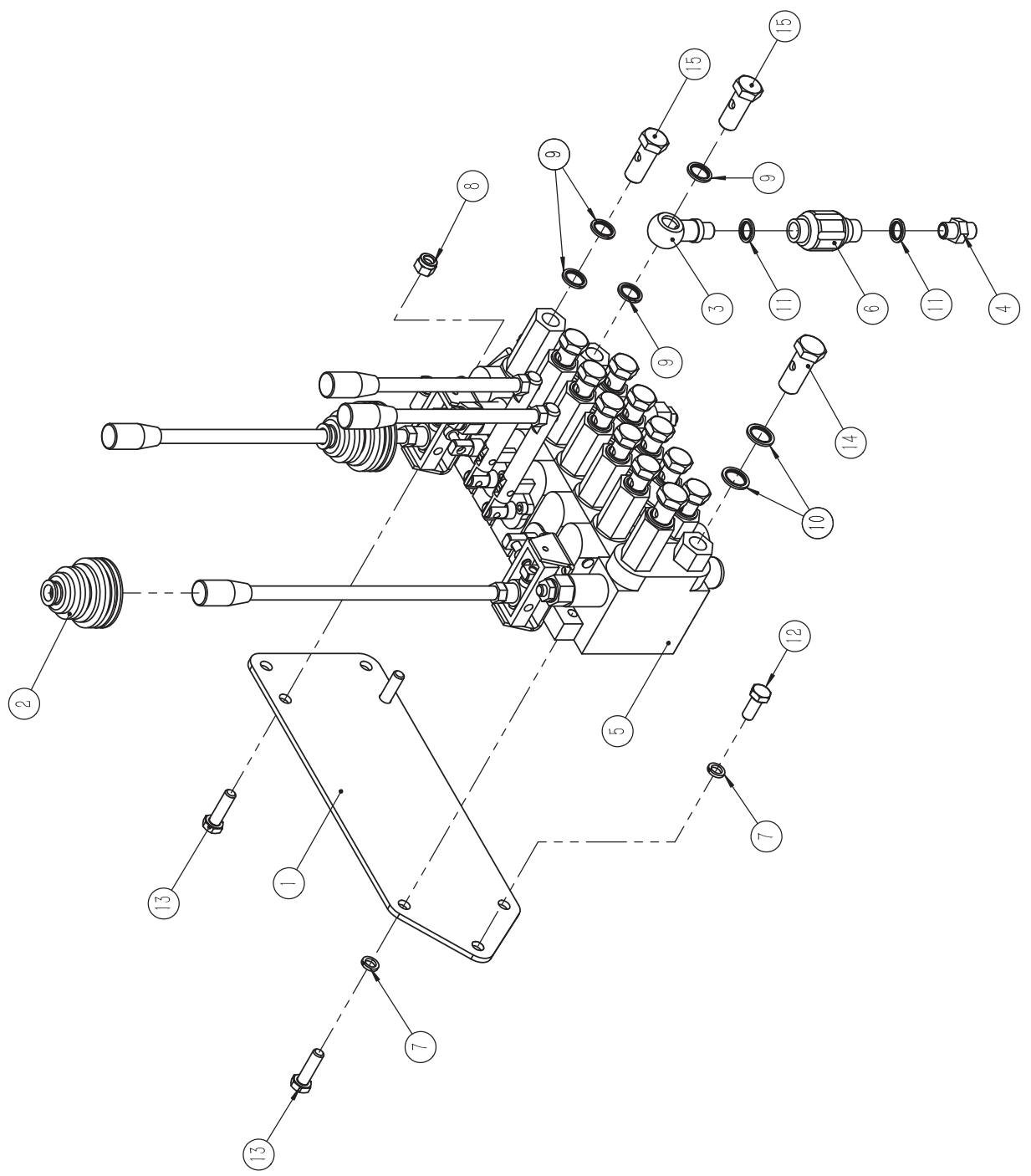
Exploded View of Seat Assy



Parts List of Seat Assy

NO.	PART NO.	名称	Name & Specifications	QTY
1	BHM95.033	座椅连接板焊合件	ADJUST WELDMENT	1
2	BHM95.039	座椅支架焊合件	Seat support weldment	1
3	BK6N.05.101	座椅	Seat	1
4	GB5783-M12×30	螺栓M12×30	Bolt M12×30	4
5	BHM95D.04.001	螺栓M8×20	Bolt M8×20	4
6	GB889.1-M12	锁紧螺母M12	Lock nut M12	6
7	GB5782-M12×100	螺栓M12×100	Bolt M12×100	2
8	GB889.1-M8	锁紧螺母M8	Lock nut M8	4

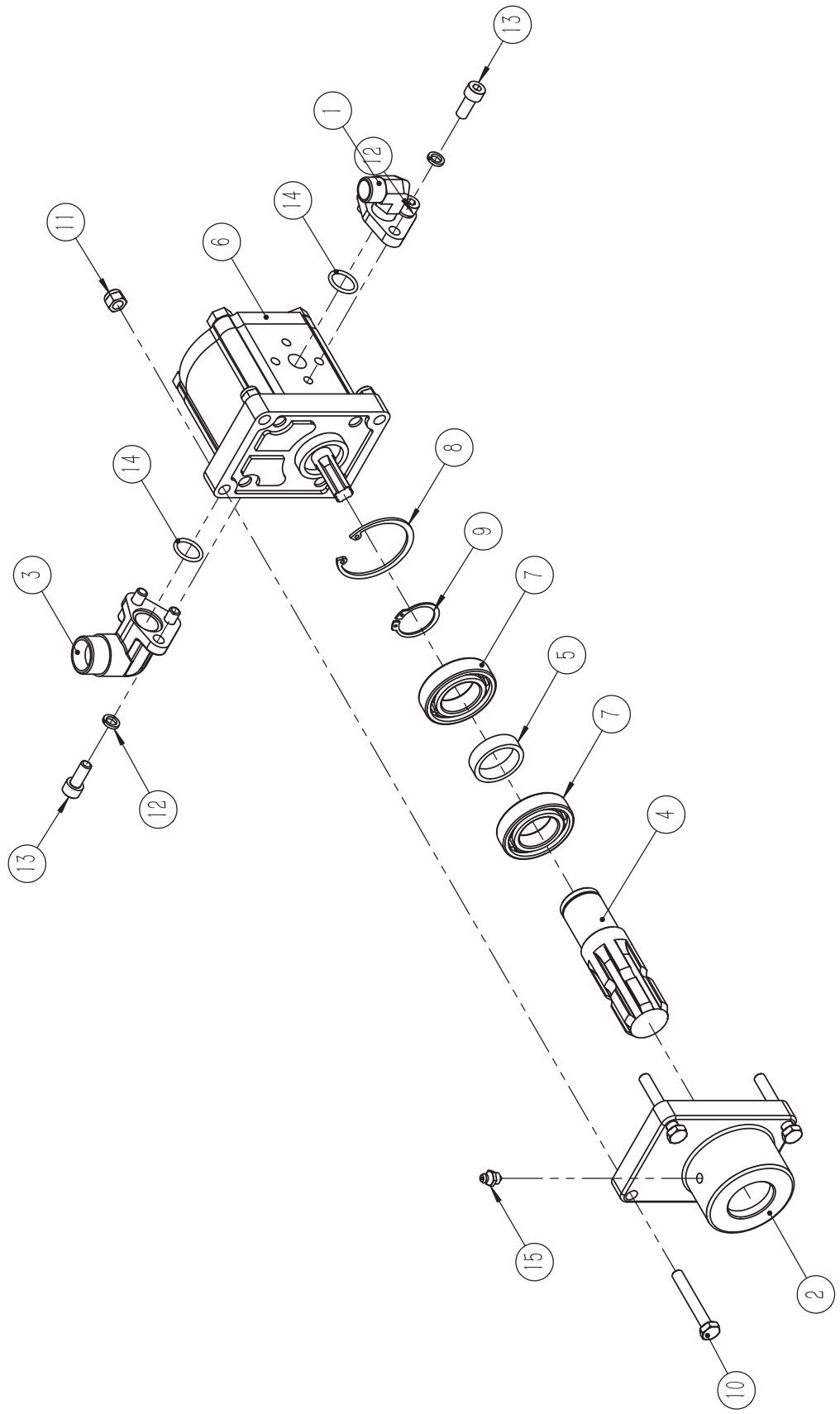
Exploded View of Valve Assy



Parts List of Valve Assy

NO.	PART NO.	名称	Name & Specifications	QTY
1	BHM95.116	阀板	Valve plate	1
2	BH5.50.102	护套	Rubber cover	2
3	BH5.60.108	球接头	Ball Coupling	1
4	BH5.60.109	接头14H	Coupling 14H	1
5	VALVE-650A	六联阀	Valve	1
6	MK-6	单向节流阀	Throttle valve	1
7	GB93-10	弹垫圈10	Spring washer 10	4
8	GB889. 1-M10	锁紧螺母M10	Lock nut M10	2
9	GB982-16	组合密封垫圈16	Bonded washer 16	24
10	GB982-18	组合密封垫圈18	Bonded washer 18	4
11	GB982-14	组合密封垫圈14	Bonded washer 14	2
12	GB5783-M10×25	螺栓M10×25	Bolt M10×25	3
13	GB5783-M10×35	螺栓M10×35	Bolt M10×35	3
14	JB999-M18x1.5	空心螺栓M18x1.5	Hollow bolt M18x1.5	2
15	JB999-M16x1.5	空心螺栓M16x1.5	Hollow bolt M16x1.5	12

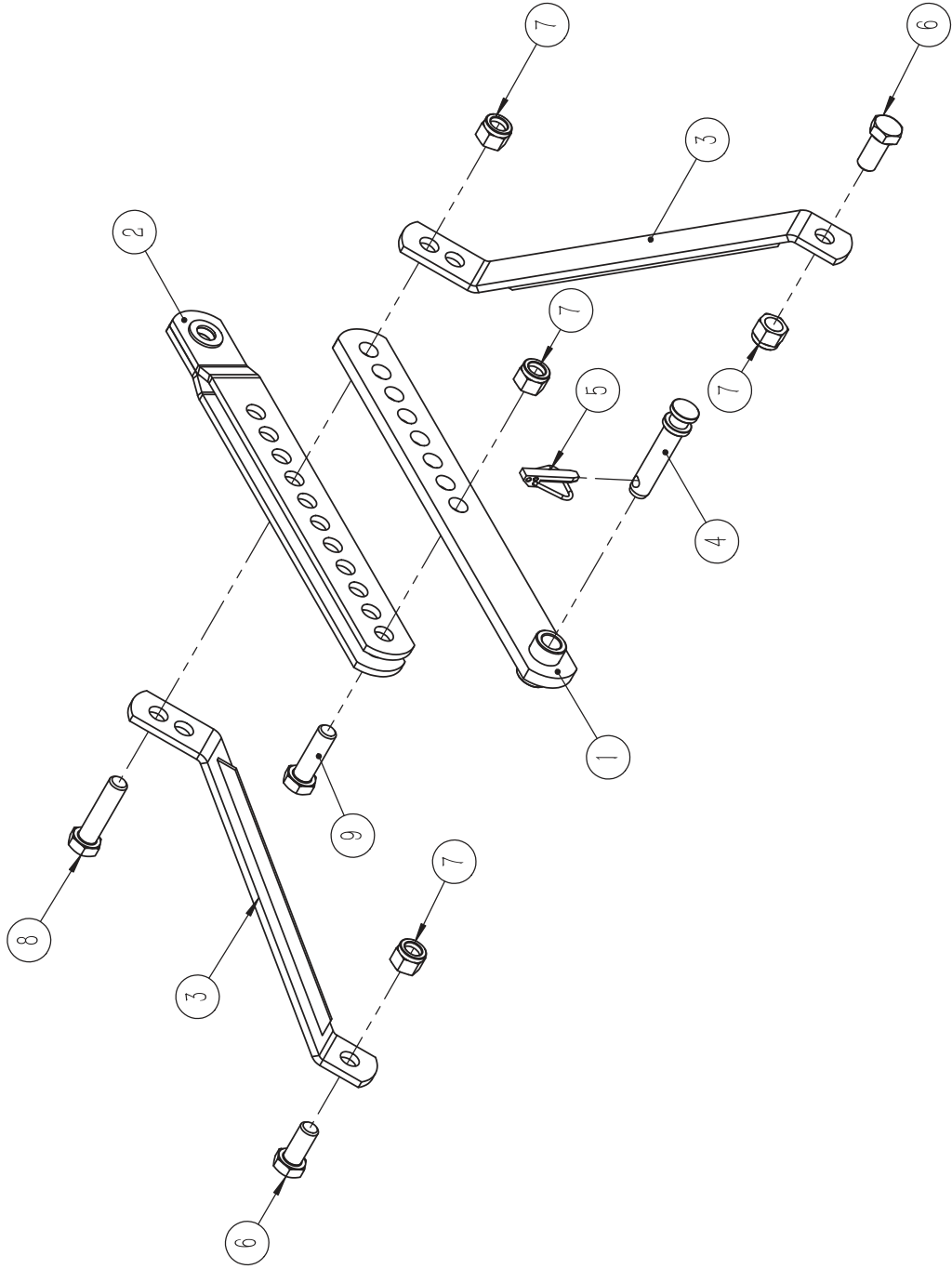
Exploded View of Pump Assy



Parts List of Pump Assy

NO.	PART NO.	名称	Name & Specifications	QTY
1	BHM95.030	法兰直角接头18H	IN OIL CONNECTOR	1
2	BHM95.108	齿轮泵连接座	BEAR SETA	1
3	BHM95.109	法兰直角接头27H	OUT OIL CONNECTOR	1
4	BHM95.113	输入轴	INPUT SHAFT	1
5	BHM95.114	轴承隔套	Sleeve	1
6	CBW-F314-CFH	齿轮泵	Pump	1
7	GB276-6006	深沟球轴承6006	BEARING 6006	2
8	GB893. 1-55	孔用弹性挡圈55	Circlip for hole 55	1
9	GB894. 1-30	轴用弹性挡圈30	Circlip for shaft 30	1
10	GB5782-M8×55	螺栓M8×55	Bolt M8×55	4
11	GB889. 1-M8	锁紧螺母M8	Lock nut M8	4
12	GB93-8	弹垫圈8	Spring washer 8	6
13	GB70. 1-M8×20	内六角圆柱头螺钉M8×20	Hex socket head cap screw M8×20	6
14	JBZQ4224-22x2.4	O型圈22x2.4	O-ring 22x2.4	2
15	JB / T7940. 1-1995	油杯8	OIL CUP 8	1

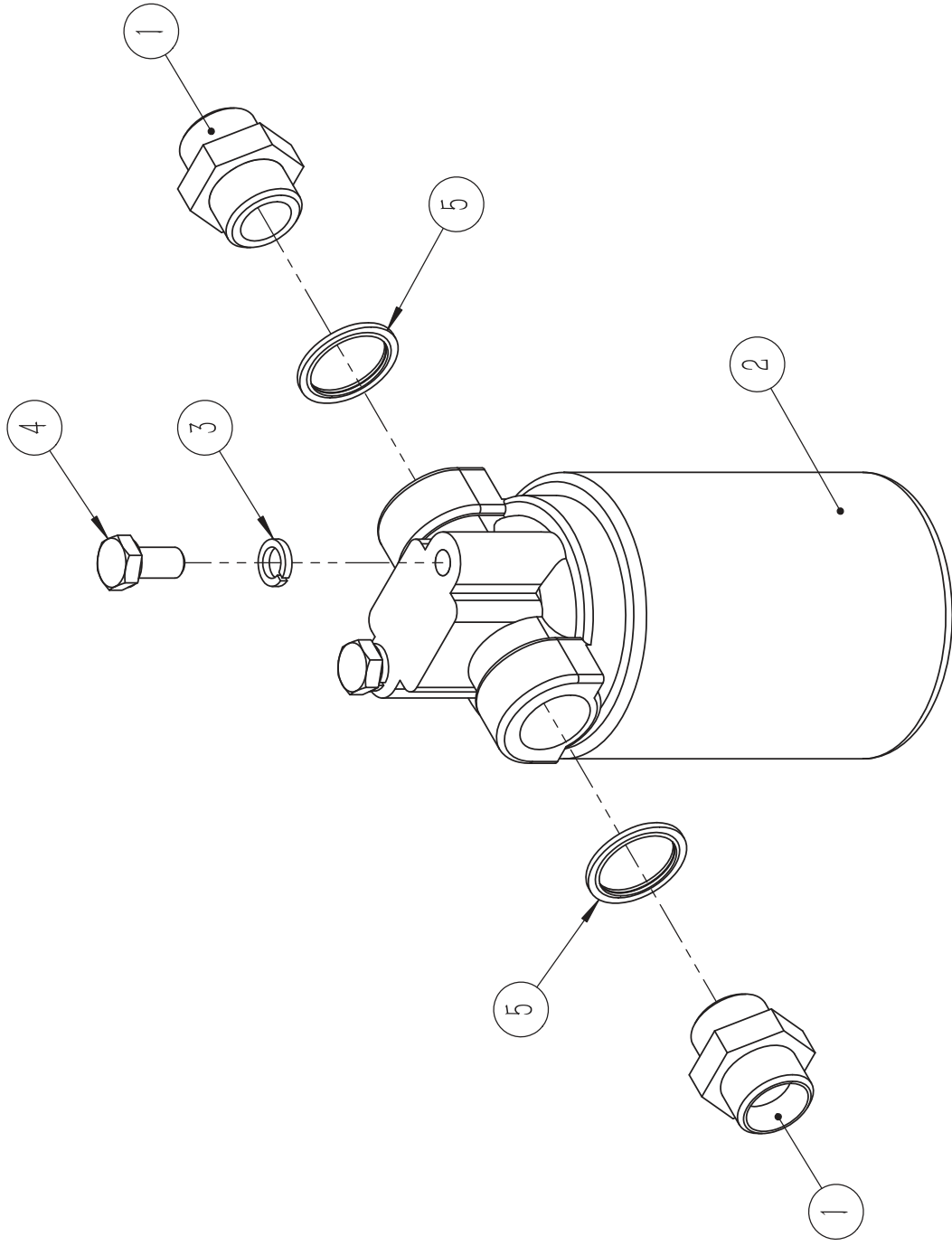
Exploded View of Lifting Assy



Parts List of Lifting Assy

NO.	PART NO.	名称	Name & Specifications	QTY
1	BHM95.036	内调节板焊合件	Adjusting plate weldment	1
2	BHM95.037	外调节板焊合件	Pull plate weldment	1
3	BHM95.038	悬挂板焊合件	Suspensive plate weldment	2
4	BHM95.107	悬挂销	Pin shaft	1
5	Lock Pin-12	锁销12	Lock Pin 12	1
6	GB5783-M20 × 45	螺栓M20 × 45	Bolt M20 × 45	2
7	GB889. 1-M20	锁紧螺母M20	Lock nut M20	4
8	GB5782-M20 × 80	螺栓M20 × 80	Bolt M20 × 80	1
9	GB5783-M20 × 65	螺栓M20 × 65	Bolt M20 × 65	1

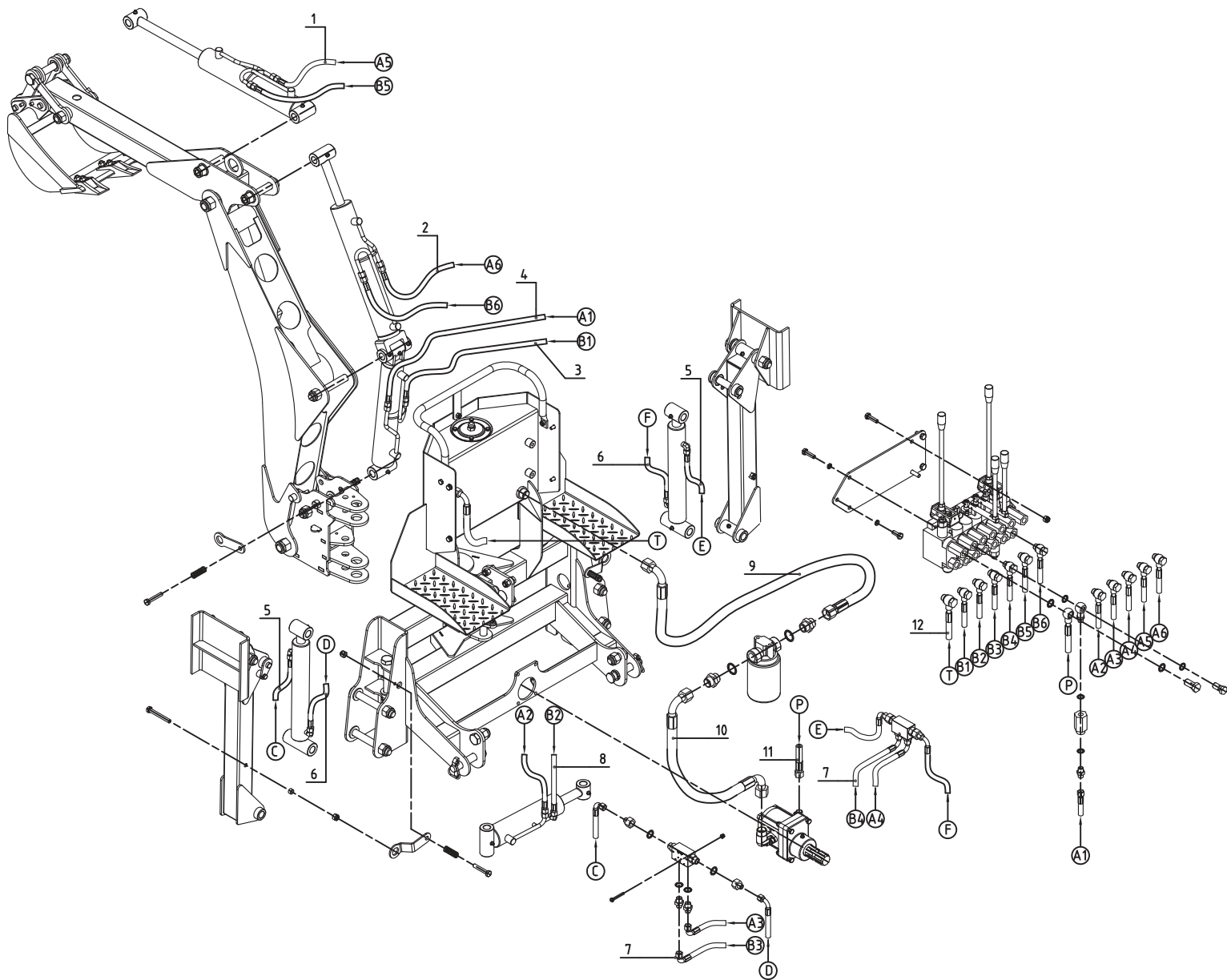
Exploded View of Oil filter Assy



Parts List of Oil filter Assy

NO.	PART NO.	名称	Name & Specifications	QTY
1	BHM95.115	接头27H-27	Coupling 27H-27	2
2	YX0811A	滤油器	Oil filter	1
3	GB93-10	弹垫圈10	Spring washer 10	2
4	GB5783-M10×20	螺栓M10×20	Bolt M10×20	2
5	JB982-27	组合密封垫圈27	Bonded washer 27	2

Exploded View of Hydraulic System Assy



Parts List of Hydraulic System Assy

NO.	PART NO.	Name & Specifications	名称	QTY
1	BHM95.041	Hose (Bucket cylinder)	挖斗油管	2
2	BHM95.042	Hose (Front arm cylinder)	小臂油管	2
3	BHM95.043	Hose (Boom cylinder)	大臂油管(杆端)	1
4	BHM95.044	Hose (Boom cylinder)	大臂油管	1
5	BHM95.045	Hose (Supporting leg cylinder)	撑腿油管 (杆端)	2
6	BHM95.046	Hose (Supporting leg cylinder)	撑腿油管	2
7	BHM95.047	Hose (Throttle valve)	油管(单向阀-阀)	4
8	BHM95.048	Hose (Swing cylinder)	转向油管	2
9	BHM95.049	Hose (Oil filter in)	油管 (油箱-油滤)	1
10	BHM95.050	Hose (Oil filter out)	油管 (油滤-泵)	1
11	BHM95.051	Hose (Valve in)	油管 (泵-阀)	1
12	BHM95.052	Hose (Valve out)	油管 (阀-油箱)	1

FARMER-HELPER Limited Warranty

Unless otherwise stated on purchase invoice, Betstco warrants to original Purchaser that Farmer-Helper products are free from major defects in material under normal use and service for a period of 90 Days from the date the product is purchased or shipped, whichever is later. Commercial use 90 days. Use at address that is not yours, is considered commercial use. Consumable, Expendable, Wear Items (Rubber plastic parts, hydraulic hoses, belts, tires, cables, blades, tines, wedges, teeth, tiups, chains, pins, brushes, filters, etc) and cracked hydraulic pumps, bent or broken cylinder rods are not covered under this warranty. Warranty does not cover items that have been modified, damaged by abuse or usage not in accordance with design or maintenance.

Betstco obligation under this warranty is to repair or replace defective upon approval by; Betstco, 83371 Melton Rd. N, Creswell OR 97426 that Warranty Claim is valid. Product shall be returned upon request of Betstco. Transportation charges to be prepaid by user.

Gasoline or diesel engines used to powered Farmer-Helper products are covered by the warranty of the appropriate engine manufacturean Purchaser must look to the engine manufacture for all issues relating to engine operation.

Betstco assumes no responsibility for outside labor.

PERMISSABLE BY APPLICABLE LAW, BETSTCO HEREBY DISCLAIMS ALL WARRANTIES OF ANY KIND, EITHER EXPRESS OR IMPLIED, INCLUDING, ANY IMPLIED WARRANTIES WITH RESPECT TO THE PRODUCT PURCHASED, WITHOUT LIMITING THE GENERALITY OF THE FOREGOING, BETSTCO HEREBY EXPRESSLY DISCLAIMS ALL LIABILITY FOR PRODUCT DEFECT OR FAILURE, CLAIMS THAT ARE DUE TO NORMAL WEAR, PRODUCT MISUSE, ABUSE, PRODUCT MODIFICATION, IMPROPER PRODUCT SELECTION, NON-COMPLIANCE WITH ANY CODES, OR MISAPPROPRIATION. BETSTCO MAKES NO WARRANTIES TO THOSE DEFINED AS "CONSUMERS" IN THE MAGNUSON-MOSS WARRANTY FEDERAL TRADE COMMISION IMPROVEMENTS ACT. THE FOREGOING EXCLUSION OF IMPLIED WARRANTIES DO NOT APPLY TO THE EXTENT PROHIBITED BY LAW. PLEASE REFER TO YOUR LOCAL LAWS FOR ANY SUCH PROHIBITIONS.

THERE SHALL BE NO LIABILITY FOR PRODUCT LIABILITY OR LIABILITY ON THE PART OF BETSTCO FOR ANY GENERAL SPECIAL OR CONSEQUENTIAL DAMAGES ARISING OUT OF THE SALE OR USE OF ANY PRODUCTS SOLD BY BETSTCO OR AN AGENT THEREOF, BETSTCO MAKES NO WARRANTIES, EXPRESS OR IMPLIED, (INCLUDING, BUT NOT LIMITED TO, ANY WARRANTY OF MERCHANTABILITY OR FITNESS OF THE PRODUCTS FOR ANY PURPOSE) WITH RESPECT TO THE PRODUCTS COVERED BY THIS AGREEMENT EXCEPT AS IN THIS PARAGRAPH OTHERWISE EXPRESSLY PROVIDED.

THIS IS THE SOLE AND ONLY WARRANTY OF VALUE-LEADER PRODUCTS, NO OTHER WARRANTY IS APPLICABLE, EITHE EXPRESSED OR IMPLIED, IN FACT BY LAW.

This warranty shall not be interpreted to render Betstco, or any authorized agent liable for injury or damages of any kind or nature, direct, consequential, or contingent, to a person or property.

The sole and only remedy in regard to any defective product shall be the repair or replacement thereof as herein provided, Betstco, agent(s) of Betstco shall not be liable for any consequential, special, incidental or punitive damages resulting from or caused by any such defects

Betstco reserves the rights to make improvements in design or changes in specifacations at any time, without incurring any obligations to owners of the units previously sold.

WARRANTY VOID IF REGISTRATION IS NOT RECEIVED OR RECORDED ONLINE WITHIN 30 DAYS OF PURCHASE DATE OR SHIP DATE, WHICHEVER IS LATER.

ITEM: _____ MODEL# _____ PURCHASE DATE: ____/____/____

PURCHASED FROM: _____ GIFT INV# ORDER# _____

OWNER NAME: _____ SERIAL # _____

OWNER ADDRESS: _____

CITY: _____ COUNTY: _____ ST: _____ ZIP: _____

PHONE: _____ EMAIL: _____

ACCEPTANCE OF RESPONSIBILITY:

I (PURCHASER) HAVE READ OPERATORS MANUAL AND LIMITED WARRANTY OR SOMEONE HAS READ/AND EXPLAINED ALL INSTRUCTIONS TO ME. I UNDERSTAND THIS WARRANTY DOES NOT COVER ANY LABOR AND THAT ALL DISPUTES WILL BE SETTLED BY BINDING ARBITRATION. BINDING ARBITRATION IS CONDUCTED BY THE BETTER BUSINESS BUREAU (BBB) LOCATED AT 4004 SW KRUSE WAY PLACE ST 375 LAKE OSWEGO OR 97035 OR THE CURRENT BBB LOCATION CLOSEST TO BETSTCO. I ACKNOWLEDGE MY LIMITED WARRANTY IS VOID IF ANY ATTEMPT TO REPAIR OR REPLACE DEFECTIVE PARTS HAS BEEN MADE BY UNAUTHORIZED PERSONNEL. I ACKNOWLEDGE RECEIPT OF MY OPERATORS MANUAL AND HAVE READ THE SAFE OPERATION SECTION. I ACKNOWLEDGE UNDERSTANDING MAINTENANCE AND SAFE OPERATION REQUIREMENTS, ITEM SPECIFICATIONS, OPERATION, CONTROLS AND STORAGE REQUIREMENTS. **I UNDERSTAND THAT IS ALONE AM RESPONSIBLE FOR PROPER MAINTENANCE, CARE AND SAFE OPERATION OF THIS FARMER-HELPER ITEM**

I (PURCHASER) AGREE THAT PERSONS NOT FAMILIAR WITH THE OPERATION OF THIS ITEM SHOULD NOT BE ALLOWED TO USE IT. CHILDREN ESPECIALLY SHOULD NOT OPERATE OR BE NEAR POWER PRODUCTS WHEN IN USE. ANYONE OPERATING VALUE-LEADER PRODUCTS SHOULD HAVE READ OPERATIONS MANUALS AND SAFETY MANUALS.

OWNERS SIGNATURE: x _____ DATE: ____/____/____

YOU MUST SIGN THIS WARRANTY AND MAIL OR FAX A COPY TO BETSTCO, 83371 MELTON RD, CRESWELL OR, 97426. IF YOU PREFER YOU MAY COMPLETE YOUR REGISTRATION ONLINE AT <https://betstco.com/product-registration/>. THIS WARRANTY IS NOT EFFECTIVE UNLESS PURCHASER COMPLETE REGISTRATION AND WARRANTY FOR WITHIN 30 DAYS OF PURCHASE OR SHIP DATE WHICHEVER IS LATER.

NOTE: WE MAY REFUSE WARRANTY OF ANY KIND UNLESS BETSTCO, RECEIVES A COMPLETED, LEGIBLE AND SIGNED WARRANTY REGISTRATION. IT IS THE RESPONSIBILITY OF THE PURCHASER TO ASSURE THAT REGISTRATION DOCUMENT IS RECEIVED BY

**1 YEAR EXTENDED WARRANTY & REGISTRATION
FARMER-HELPER IMPLEMENTS
BRANDED PRODUCTS
1 YEAR EXTENDED WARRANTY**

1 Year Extended Warranty amends to original Recorded Warranty Registration the time period of described coverage. Extended Warranty does not apply to consumable and Expendable Item as described in Product Warranty Registration.

This amendment does not affect any other part of recorded Warranty Registration or policy.

No one is authorized to alter, modify, or enlarge this Amendment to original recorded Warranty Registration

**EXTENDED REGISTRATION & PAYMENT MUST BE RECEIVED
WITHIN 30 DAYS OF PURCHASE DATE**

EXTENDED WARRANTY REGISTRATION

PRODUCT & MODEL # _____

SERIAL # _____

OWNER NAME : _____

BETSTCO INVOICE # _____

ACCEPTANCE OF RESPONSIBILITY:

I (PURCHASER) HAVE READ AND UNDERSTAND THE EXTENDED WARRANTY OR SOMEONE HAS READ AND EXPLAINED ALL THE ABOVE TO ME. I UNDERSTAND THIS EXTENDED WARRANTY DOES NOT COVER ANY LABOR. I HAVE FILED MY ORIGINAL WARRANTY REGISTRATION AND FULLY UNDERSTAND MY REQUIREMENTS. ***I UNDERSTAND THAT I ALONE AM RESPONSIBLE FOR PROPER MAINTENANCE, CARE AND SAFE OPERATION OF THIS TRACTOR IMPLEMENT.***

OWNERS SIGNATURE: x _____

DATE: ____/____/____

FAX TO 1-541-895-2756

YOU MUST SIGN THIS WARRANTY AND MAIL OR FAX A COPY TO BETSTCO, 83371 MELTON RD, CRESWELL OR. IF YOU PREFER YOU MAY COMPLETE YOUR REGISTRATION ONLINE AT <https://betstco.com/product-registration/>. THIS WARRANTY IS NOT EFFECTIVE UNLESS PURCHASER COMPLETE REGISTRATION AND WARRANTY FOR WITHIN 30 DAYS OF PURCHASE OR SHIP DATE WHICHEVER IS LATER.

NOTE: WE MAY REFUSE WARRANTY OF ANY KIND UNLESS BETSTCO, RECEIVES A COMPLETED, LEGIBLE AND SIGNED WARRANTY REGISTRATION. IT IS THE RESPONSIBILITY OF THE PURCHASER TO ASSURE THAT REGISTRATION DOCUMENT IS RECEIVED BY



FHM
FARMER-HELPER
MACHINERY COMPANY

Parts Request Form

E-mail Cservice@betstco.com

Name: _____

Address: _____

City State Zip: _____

Phone: _____

E-mail: _____

Model Number: _____

Serial Number: _____

Purchased From: _____

Purchase Date: _____

Item No.	Description	Qty	Price	Amount

Comments: