

FH-EFG Series



FHM

**FARMER-HELPER
MACHINERY COMPANY**



- Scan Me To Watch The Assembly Video!

OPERATION & PARTS MANUAL

Please read these instructions before using. Always grease all fittings and be sure to always check and fill with oil before operating! Retain this manual for future use.

BETSTCO

RUGGED LABOR SAVING EQUIPMENT SINCE 1995 83371 Melton Rd, Creswell OR 97426

www.Betstco.com

541-895-3083 M-F 7am-4pm PST



ASSEMBLY INSTRUCTION



EFG-Series Assembly Instructions

Step # 0: Removing Unit from Shipping Frame

Tools Needed



Angle Grinder or Metal cutting tool



EFG-Series Assembly Instructions

Step # 1: Installing uprights

Tools Needed



18mm wrench and 19mm socket



EFG-Series Assembly Instructions

Step # 1: Installing uprights

Parts Needed



Uprights and buckle



ASSEMBLY INSTRUCTION



EFG-Series Assembly Instructions

Step # 2: Installing kickstand

Tools Needed



18mm wrench and 19mm socket



EFG-Series Assembly Instructions

Step # 2: Installing kickstand

Parts Needed



Kickstand



EFG-Series Assembly Instructions

Step # 3: Installing PTO Guard

Tools Needed



13mm socket



EFG-Series Assembly Instructions

Step # 3: Installing PTO Guard

Parts Needed



PTO Guard

ASSEMBLY INSTRUCTION



EFG-Series Assembly Instructions

Step # 4: Installing Belt Guard

Tools Needed



Grease gun and 18mm socket



EFG-Series Assembly Instructions

Step # 4: Installing Belt Guard

Parts Needed



Belt Guard



ASSEMBLY INSTRUCTION



EFG-Series Assembly Instructions

Step # 5: Lube Grease Zerks

Tools Needed



Grease gun



EFG-Series Assembly Instructions

Step # 6: Lube PTO Shaft

Tools Needed



Grease gun



EFG-Series Assembly Instructions

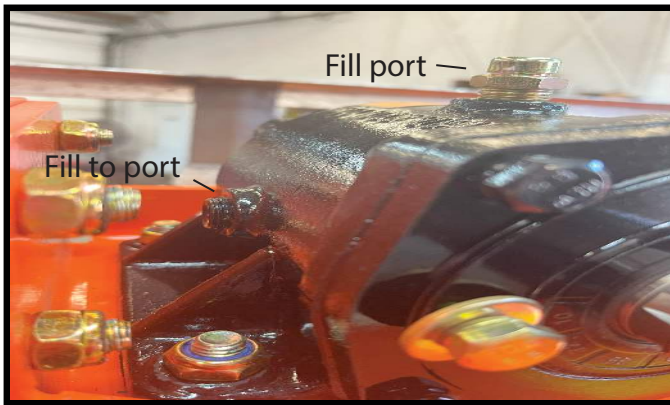
Step # 6: Lube PTO Shaft

Parts Needed



PTO Shaft

ASSEMBLY INSTRUCTION



Begin by removing the fill port located on the top of the gearbox. Proceed to remove the Allen bolt situated on the side of the gearbox, which will serve as your fill point. Continue filling using 80-90 gear until you observe a trickle of oil, indicating that your gearbox is adequately filled and ready for operation.

Table of Contents

1. Introduction	8
2. Setup and Assembly Instructions	8
3. PTO Driveshaft Safety Tips	9
4. Protective Guards and Shields	10
5. Safety Instructions	10
6. Operator Protective Gear	11
7. Operation Checklist	11
8. Flail Mower Connection and Operation	11
9. Cutting Height Adjustment	13
10. Blade Replacement	14
11. Belt Tension and Adjustment	14
12. Lubrication Frequencies and Locations	14
13. Preventive Maintenance	15
14. Troubleshooting	15
15. Parts and Fasteners	16
16. Torque Values	17
17. Basic Parts Breakdown	18
18. Pictures	19
19. Flail Mower Specification	20
20. Parts Diagrams and Numbers	22
21. Warranty Registration	33

1. INTRODUCTION

Before using your flail mower, read and understand this operation manual and the accompanying maintenance instructions. It contains important information which will help you observe proper safety precautions, get the most work from your flail mower and help prolong the life of your flail mower.

2. SETUP and ASSEMBLY INSTRUCTIONS

Your flail mower will arrive in a metal shipping frame. This frame can be dismantled in minutes to allow access to all parts of your mower.

See torque value chart at end of manual for all specific bolts being used.

Remove parts box, PTO driveline, side cover shield, and then mower from crate. See picture and verify parts, see picture at end of manual.

Attach storage stand and PTO Shield as shown in picture at end of manual.

Attach upper 3pt bracket as shown in picture at end of manual. Hint-Do not tighten nuts & bolts until all have been loosely assembled in their proper location. Tighten from top-down.

Lube grease points on mower and driveline (4 total points, use lithium base general purpose grease) see picture at end of manual

Before attaching side cover, check all axle bolts and pulley screws for tightness (see picture at end of manual). Verify belt deflection is $\frac{1}{4}$ " to $\frac{1}{2}$ " Attach side safety cover. 1 connecting bolt (see picture at end of manual).

Fill gear box half way with 80-90 gear oil (Approx. 1 Qt.) See picture at end of manual for more info.

Completely read the rest of manual before attaching PTO driveline and operating the mower.

Before Operation check all bolts, nuts, and zerks for tightness. Verify the tightness of all blade retaining bolts and nuts. Check all blade for free swinging action.

3. PTO DRIVESHAFT SAFETY TIPS

Your flail mower is shipped with a PTO driveshaft.

Always ensure that the PTO shaft is no more than 15 degrees of horizontal when operating.

-The following steps are recommended for safe operation of the driveshaft under field conditions.

-Test hitch angle to prevent the driveshaft from:

☒ Extending beyond the recommended maximum length.

☒ Bottoming out

☒ Reaching a position that allows joints to lock

☒ Exceeding the maximum allowable angle for constant velocity (CV) joints.

-Specify and test telescoping members to allow the lowest possible thrust loads, considering the expected working conditions.

-Provide a means to support the drive shaft when it is disconnected from the tractor, to prevent damage during storage or transportation.

-Provided drive shaft is of shear design using a grade 4-5 bolt

-Provide a proper clearance zone for the operation of the driveshaft, to avoid damage to the shielding components.

-It is not recommended to use PTO adaptors which may defeat the purpose of the tractor's master shield and/or adversely affect the performance of the driveshaft.

4. PROTECTIVE GUARDS AND SHIELDS

Do not allow the flail mower to be operated without the side cover or fender deflector's properly in place. PTO driveshaft should consist of a PTO master shield, integral driveshaft shield, and a mower input connection shield.

1. Follow all flail mower and tractor instruction labels and manuals. The flail mower should be used only with the tractor's PTO master shield in place.
2. Specify and test an integral driveshaft shield with end cones which will overlap, but not interfere with the PTO master shield or flail mower input connection shield.
3. A flail mower input connection shield should be used in addition to the integral driveshaft shield, in order to guard the shaft coupling and any torque limiting device installed on the driveshaft.
4. Check that all routine maintenance of the driveshaft can be done without removal of the shields.

5. SAFETY INSTRUCTIONS

Do not attempt to operate the flail mower until you have read and understood this manual. Always keep guards and flail mower shields properly installed while operating the flail mower.

Keep the decals in place and verify they are understandable. New labels can be ordered from Betst Power Equipment upon request. If your flail mower is repainted, be sure the labels and decals remain visible.

Never leave the flail mower running unattended.

Do not attempt alterations, repairs or adjustments while blade rotor is turning. Always disconnect the PTO and stop the tractor motor, then put keys in your pocket.

Only use tractor of specified HP for your model flail mower as defined in the specifications.

Keep hands, feet and other extremities out of and away from the blade rotor area. When checking blades, EXERCISE EXTREME CAUTION! If accidentally rotated, the blade rotor can contain enough residual energy to cause serious injury.

Never allow anyone to stand beside or behind mower while operating.

Keep everyone, especially children and animals, away from the operation area.

Anyone who has not read and understood this manual should not be in the area.

6. OPERATOR PROTECTIVE GEAR

The following protective clothing and gear is recommended when using your flail mower.

EYES	--	Wraparound Safety Glasses or Goggles
EARS	--	Ear Plugs
HANDS	--	Leather Gloves
FEET	--	Steel-Toed Boots
LEGS	--	Heavy Pants
ARMS	--	Long-Sleeved Shirt

NO LOOSE CLOTHING SHOULD BE WORN AROUND THE FLAIL MOWER

7. OPERATION CHECKLIST

CAUTION: Look under flail mower before operating to be sure the blade area is clear.

Make sure that:

- ☒ You have completed all steps of the assembly instructions
- ☒ The PTO shaft doesn't come apart or bottom out during the normal lifting range.
- ☒ There is no person around mower.

During and after operation, check the grass clippings or mulched limbs for size and quality of cut. It may be necessary to adjust the cutting height. See adjusting cutting height.

8. Flail Mower Connection and Operation

Remember that if flail mower blades are blunted they will not cut properly. Dirt, rocks, nails, or other foreign material will shorten blade life.

Always review the manual before operating the flail mower.

Operate mower in a safe well known area with the rear pointed away from doorways, sidewalks, or any areas where your view is obstructed or people may approach.

Only use 540 RPM PTO selection, any other use will void the warranty and may cause severe damage to the gear box or mower.

Connecting to Tractor

Make sure there are no obstructions under the flail mower.

Align lower link arms of tractor to hitch clevises on mower, Insert lower hitch pins into lower ball swivels and attach lynch pins.

Attach tractor top link to upper floating hitch on mower with pin supplied. Secure with lock pin.

Slide driveline end with shear system over the tractor's splined PTO shaft and secure it with locking device of driveline.

Slide driveline non-shear pin end over the mower's splined PTO shaft and secure it with locking device of driveline.

Driveline should now be moved back and forth to ensure that it is secure on the PTO shaft of the tractor and mower gearbox.

When raising the mower to the transport position, be sure that driveline does not contact tractor or mower. Adjust and set the tractor's 3-point hitch lift height so that the driveline does not contact mower deck in the fully raised position.

When moving over paved or rock road way be sure mower is lifted off the surface.

You can use this method of attaching quick hitch without voiding warranty: https://www.youtube.com/watch?v=Li_F__ryTcw

To Begin Mowing

Clear the area to be mowed of objects and debris that might be picked up and thrown by the mower blades.

Grass is best cut when dry. Mowing wet grass can cause plugging resulting in grass clumps behind the mower.

Grass should be cut frequently as smaller clippings deteriorate faster.

If cutting extremely tall grass, it is best to raise the cutting height and mow the area, then lower the cutting height and mow a second time at the desired height.

To begin cutting, observe all safety guidelines in the manual.

Always check Gear Oil Level before mowing.

Engage PTO driveline at 540 RPM selection, Tractor engine RPM should be at least 1200 RPM, or as defined by tractor manufactures' "PTO RPM RANGE"

At low engine rpm's you may experience jerking in the mower, increase the engine rpm until at 540 RPM PTO speed. Most cutting is preformed with the 3-pt lift system in the float position.

If the blades are touching the surface while in float position, either adjust cutting height or raise mower with 3pt lift into fixed height position. See cutting height adjustment.

At first begin mowing at a slow forward speed. Mower knives will cut better at a faster blades speed and slower travel speed.

After mowing 50 feet, stop and check to see that the mower is adjusted properly for the cutting conditions.

Do Not make sharp turns or attempt to back up while the mower is on the ground.

Do Not engage PTO with mower fully raised off the ground.

Normal mowing speed will be between 2-5 mph and you will need to maintain tractor PTO speed to produce a clean cut so select a tractor gear and range that will maintain this combination. The quality of cut or degree of debris pulverization will be better at lower ground speeds and cutting denser ground cover or heavier brush may create the need to slow down. Remember to look back often.

7. CUTTING HEIGHT ADJUSTMENT

The flail mower cutting height depends upon the height of roller, height of adjustable skids, and length of top center link. See pictures at end of manual.

On uneven terrain the roller and skids should both be touching the surface of cutting area. On even terrain the roller only needs to be touching the cutting surface. On rough and rocky terrain it is recommend that you cut high with all parts of the mower 3" above the ground. To achieve lowest cutting height in this type of terrain, raise roller and skids so mower can be operated with 3 pt in fixed position, remember change in elevation may require you to adjust cutting height to insure blades do not make contact with the surface.

To adjust height of roller or skids, remove bolts and nuts that affix them, lift or lower both sides in equal measurements, replace bolts and re-tighten. See picture at end of manual.

The top center link can also be used to adjust cutting height and aggressiveness of blades. In level grass areas the top link should be adjust so the mower sits on a slightly lifted horizontal plane. In dense or rough terrain the mower should sit in a slightly higher horizontal plane.

8. BLADE REPLACEMENT

The best way to tell if the blades need replacing is to watch the results of your mowing.

Dull blades cause many problems, including:

- ☒ Loss of cutting power
- ☒ Jamming or plugging
- ☒ Rough cutting with more vibration than usual
- ☒ Rowing left in cut

To remove the blades, take the PTO shaft out of gear. Shut off the tractor and keep the keys in your pocket.

The blades are accessed underneath the mower.

Prop up mower with suitable device to hold the weight of the mower.

Inspect and remove/replace dull or missing blades.

9. BELT TENSION ADJUSTMENT

To adjust belt tension, take the PTO shaft out of gear. Shut off the tractor and keep the keys in your pocket.

The belts are accessed behind black side cover.

Prop up mower with suitable device to hold the weight of the mower.

Check the deflection of belts, should be between $\frac{1}{4}$ " and $\frac{1}{2}$ "

To adjust tension, loosen bolts and nuts as shown in picture at end of manual.

Then using support move gearbox and shaft horizontally to adjust tension, then adjust support bolt and lock nut to the adjusted height, see picture at end of manual.

Tighten all bolts and nuts that were loosed to adjust the tension.

10. LUBRICATION FREQUENCIES AND LOCATIONS

PTO SHAFT – 2 zerks on universal once a day with lithium based multipurpose grease.

ROTOR DRIVESHAFT – There is a zerk on each end of rotor shaft. Add multipurpose grease before each use. (2-3 Pumps)

GEAR BOX – Check level each time before operating, drain/fill as needed.

11. PREVENTIVE MAINTENANCE

Check all bolts & nuts after initial 4 hours of operation, and once per day thereafter before beginning operation.

Check belt tension 4 hours after initial operation, and every 24 hours of operation thereafter before beginning operation.

12. TROUBLESHOOTING

PROBLEM: *Belt Slipping*

<u>Possible Causes</u>	<u>Solution</u>
Rotor Shaft Area Clogged	Unplug and clean mower deck.
Pulley Sheaves Clogged/Dirty	Remove shield and clean sheaves
Belt Tension insufficient	Check and adjust belt tension
Travelling to fast	Reduce Travel Speed
Belt Worn	Replace Belt
Blades Dull	Reverse/Replace

PROBLEM: *Patches of Uncut Grass*

<u>Possible Causes</u>	<u>Solution</u>
Low Throttle	Increase Engine RPM
Travelling to fast	Reduce Travel Speed
Blades Dull	Reverse/Replace

PROBLEM: *Excessive Vibration*

<u>Possible Causes</u>	<u>Solution</u>
Missing Blades	Replace missing blades
Worn Drive Belt	Replace worn belt
Pulley Miss-Aligned/Damaged	Re-Align/Replace
Debris in Belt Area	Remove cover and clean area
PTO Driveline Bent	Replace Bent/Broken Parts
Engine Speed	Increase Engine Speed

PROBLEM: *Gear Box Noisy*

<u>Possible Causes</u>	<u>Solution</u>
Low Oil Level	Check and Fill with Oil
Broken/Damaged Internal Parts	Dismantle/Replace Parts

PROBLEM: *Knives Scalping Grass*

<u>Possible Causes</u>	<u>Solution</u>
Incorrect Cutting Height	Adjust Cutting height
Mowing Pattern	Change Mowing Pattern
Turning to Quickly	Reduce Speed during turns

PROBLEM: *Uneven Cut*

<u>Possible Causes</u>	<u>Solution</u>
Missing/Dull Blades	Remove/Replace Blades
Travelling to Fast	Reduce Travel Speed
Mower Not Level	Adjust 3Pt Linkage

PROBLEM: *Tractor Loaded Down by Mower*




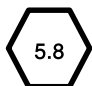

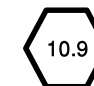
<u>Possible Causes</u>	<u>Solution</u>
Low Engine Speed	Increase Engine Throttle
Travelling to Fast	Reduce Travel Speed
Blade Area Clogged	Clean Blade Area

13. PARTS AND FASTENERS

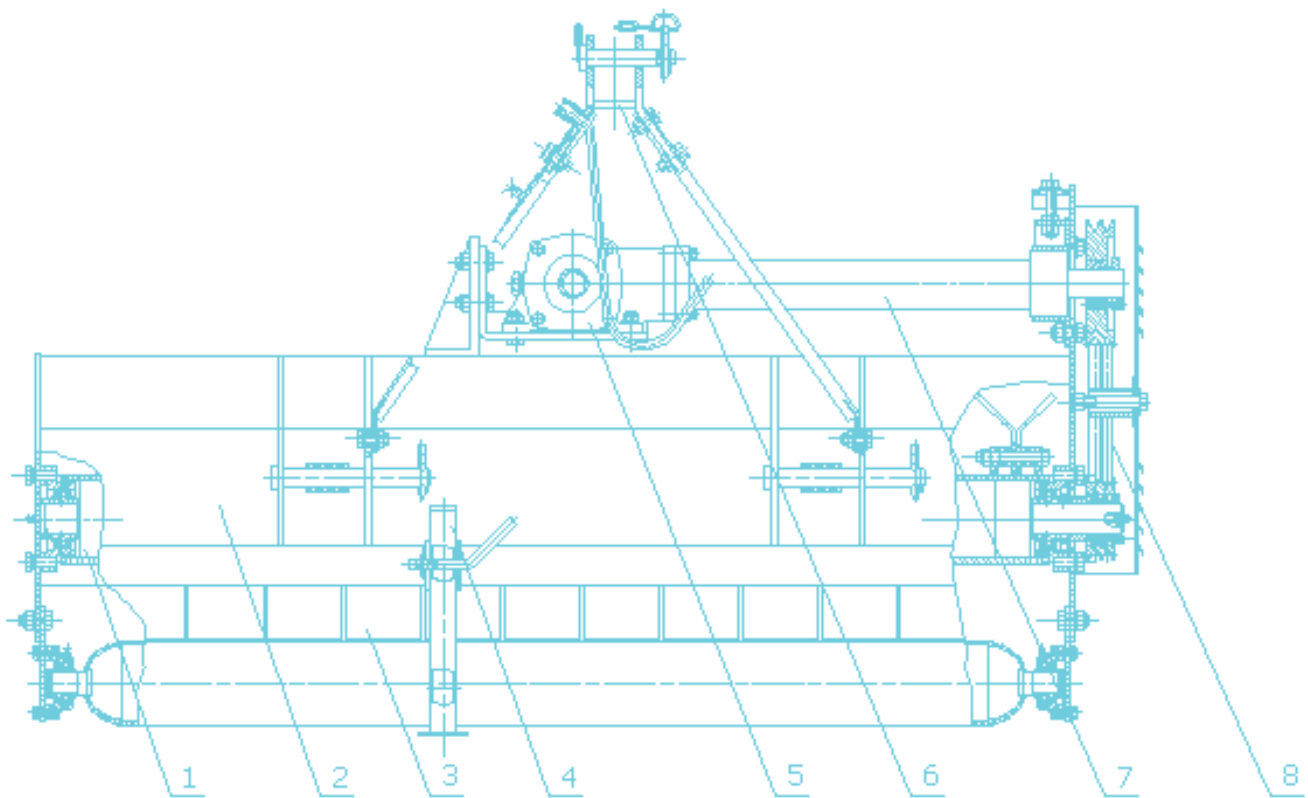
Your flail mower is designed for ease of maintenance. Replacement parts are available from Betst Power Equipment at 1-541-895-3083 or Support@Betstco.com Check the parts list for specification.

See parts diagrams at end of manual

Torque Values Chart

	Bolt Head Identification							Bolt Head Identification											
	 Grade 2			 Grade 5				 Grade 8			 Class 5.8			 Class 8.8			 Class 10.9		
in-tpi ¹	N	m	ft-lb ³	N	m	ft-lb	N	m	ft-lb	mm x pitch	N	m	ft-lb	N	m	ft-lb	N	m	ft-lb
1/4" - 20	7.4		5.6	11		8	16		12	M 5 X 0.8	4		3	6		5	9		7
1/4" - 28	8.5		6	13		10	18		14	M 6 X 1	7		5	11		8	15		11
5/16" - 18	15		11	24		17	33		25	M 8 X 1.25	17		12	26		19	36		27
5/16" - 24	17		13	26		19	37		27	M 8 X 1	18		13	28		21	39		29
3/8" - 16	27		20	42		31	59		44	M10 X 1.5	33		24	52		39	72		53
3/8" - 24	31		22	47		35	67		49	M10 X 0.75	39		29	61		45	85		62
7/16" - 14	43		32	67		49	95		70	M12 X 1.75	58		42	91		67	125		93
7/16" - 20	49		36	75		55	105		78	M12 X 1.5	60		44	95		70	130		97
1/2" - 13	66		49	105		76	145		105	M12 X 1	90		66	105		77	145		105
1/2" - 20	75		55	115		85	165		120	M14 X 2	92		68	145		105	200		150
9/16" - 12	95		70	150		110	210		155	M14 X 1.5	99		73	155		115	1215		160
9/16" - 18	105		79	165		120	235		170	M16 X 2	145		105	225		165	315		230
5/8" - 11	130		97	205		150	285		210	M16 X 1.5	155		115	240		180	335		245
5/8" - 18	150		110	230		170	325		240	M18 X 2.5	195		145	310		230	405		300
3/4" - 10	235		170	360		265	510		375	M18 X 1.5	220		165	350		260	485		355
3/4" - 16	260		190	405		295	570		420	M20 X 2.5	280		205	440		325	610		450
7/8" - 9	225		165	585		430	820		605	M20 X 1.5	310		230	650		480	900		665
7/8" - 14	250		185	640		475	905		670	M24 X 3	480		355	760		560	1050		780
1" - 8	340		250	875		645	1230		910	M24 X 2	525		390	830		610	1150		845
1" - 12	370		275	955		705	1350		995	M30 X 3.5	960		705	1510		1120	2100		1550
1-1/8" - 7	480		355	1080		795	1750		1290	M30 X 2	1060		785	1680		1240	2320		1710
1 1/8" - 12	540		395	1210		890	1960		1440	M36 X 3.5	1730		1270	2650		1950	3660		2700
1 1/4" - 7	680		500	1520		1120	2460		1820	M36 X 2	1880		1380	2960		2190	4100		3220
1 1/4" - 12	750		555	1680		1240	2730		2010	<div><div>¹ in-tpi = nominal thread diameter in inches-threads per in.</div><div>² N m = newton-meters</div><div>³ ft-lb= foot pounds</div><div>⁴ mm x pitch = nominal thread diameter in millimeters x thread pitch</div></div>									
1 3/8" - 6	890		655	1990		1470	3230		2380										
1 3/8" - 12	1010		745	2270		1670	3680		2710										
1 1/2" - 6	1180		870	2640		1950	4290		3160										
1 1/2" - 12	1330		980	2970		2190	4820		3560										

1. Blade axle
2. Mower Housing
3. Combined Safety Fender
4. Support Leg
5. Gearbox Assembly
6. 3Pt Bracket
7. Transmission shaft
8. Pulleys and Belts

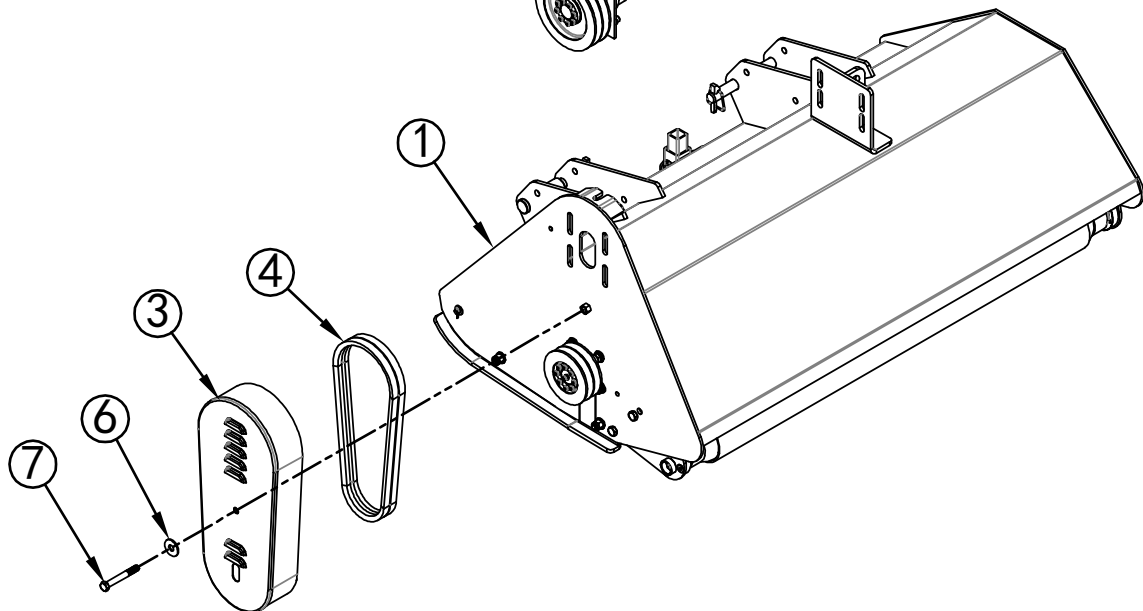
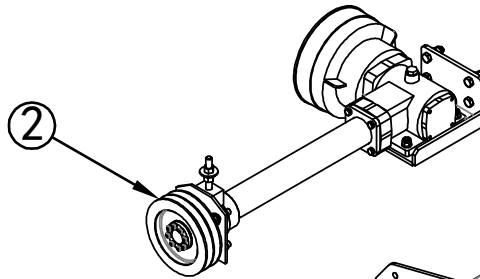
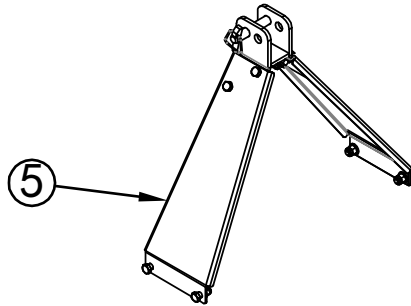
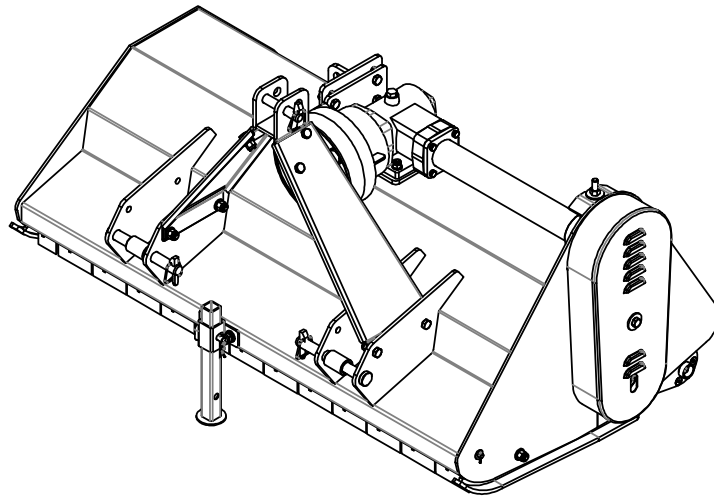


Farmer Helper EFG Series Flail Mowers Specifications

SPECS	EFG105	EFG125	EFG135	EFG155	EFG175
Working Width	41"	48"	53"	60"	68"
Overall Width	47"	54"	60"	67"	75"
Min. HP Req.*	18HP	20 HP	22 HP	24 HP	28 HP
Hitch	Cat I	Cat I	Cat I	Cat I	Cat I
Gear Box Rating	45 HP	45 HP	45 HP	45 HP	45 HP
Distance Right of Center Mount**	19.75 inches or 23.75inches	24 inches or 28.25 inches	28.5 inches or 32.25 inches	31.25inches or 35.5 inches	39.25 inches or 43.5 inches
(Optional) "Y" Rock Blades	32 Blades	40 Blades	48 Blades	48 Blades	56 Blades
Standard Hammer Blades	16 Hammers	20 Hammers	24 Hammers	24 Hammers	28 Hammers
Housing	Reinforced 8 Guage	Reinforced 8 Guage	Reinforced 8 Guage	Reinforced 8 Guage	Reinforced 8 Guage
Side Plate Thickness	1/4"/7 mm	1/4"/7 mm	1/4"/7 mm	1/4"/7 mm	1/4"/7 mm
Roller Dia.	4"	4"	4"	4"	4"
Rotor Shaft Dia	4 1/2"	4 1/2"	4 1/2"	4 1/2"	4 1/2"
Blade Swing	13"	13"	13"	13"	13"
No. of Belts	2	2	2	3	3
Driveline Type	Series 4 Quick Connect, Shear Bolt Std. 6-Spline	Series 4 Quick Connect, Shear Bolt Std. 6-Spline	Series 4 Quick Connect, Shear Bolt Std. 6-Spline	Series 4 Quick Connect, Shear Bolt Std. 6-Spline	Series 4 Quick Connect, Shear Bolt Std. 6-Spline
Warranty	2 Year	2 Year	2 Year	2 Year	2 Year
Weight	480 lbs	515lbs	540 lbs	635lbs	660 lbs
Crated Weight	510 lbs	550 lbs	580 lbs	680 lbs	710 lbs

* if your tractor is gear transmisson this is PTO Horsepower. If it is hydro this is engine Horsepower.

** 3-Point Hitch may be attached in two positions allowing you to change mowers right offset.

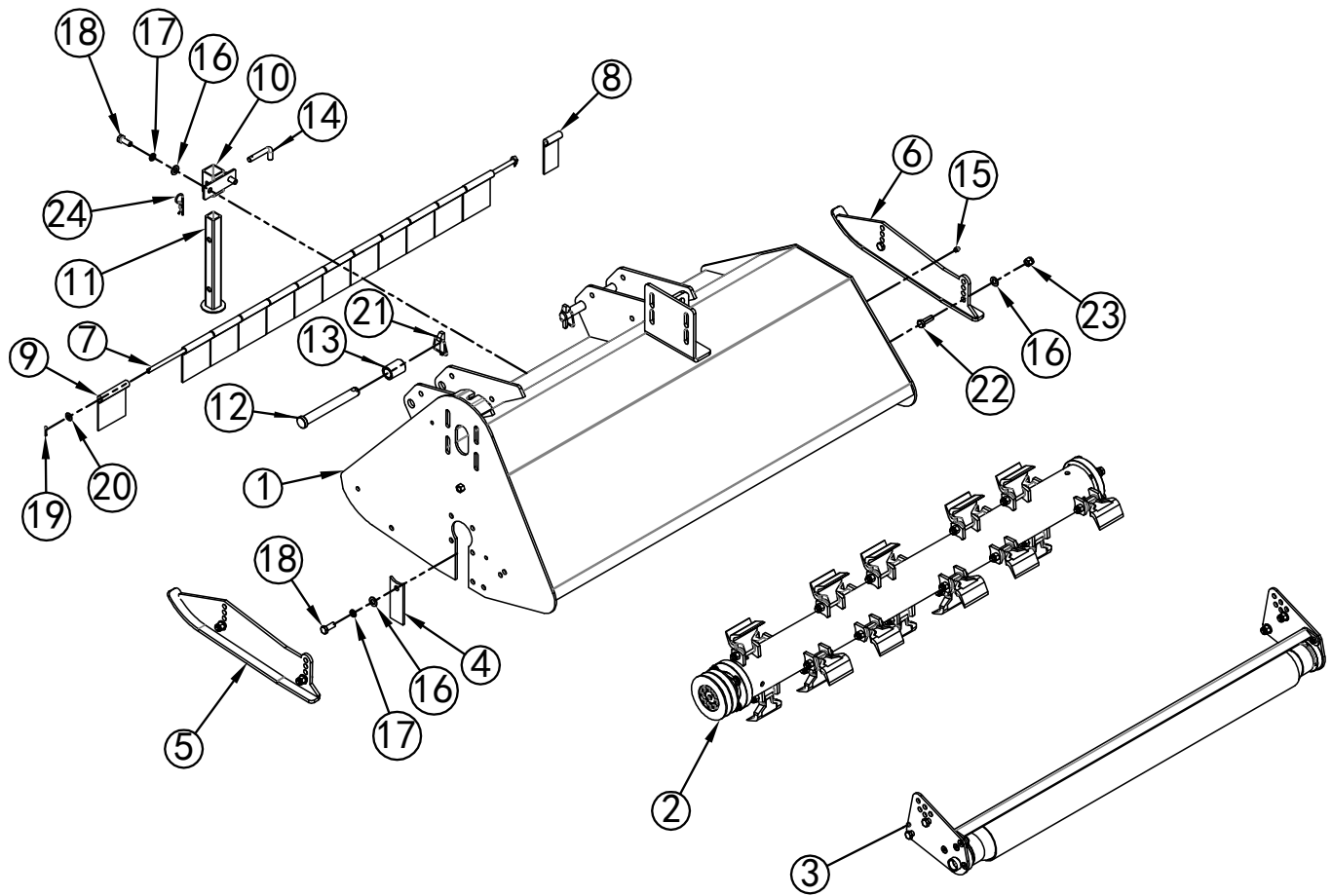
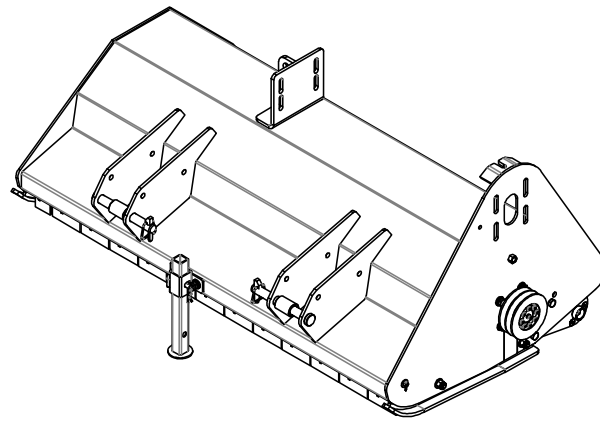


ITEM	PART No.	NAME & SPECIFICATION	QTY.	MODEL
1	EFG105.001	MOWER, ASSEMBLY	1	EFG105
	EFG115.001	MOWER, ASSEMBLY	1	EFG115
	EFG125.001	MOWER, ASSEMBLY	1	EFG125
	EFG145.001	MOWER, ASSEMBLY	1	EFG145
	EFG155.001	MOWER, ASSEMBLY	1	EFG155
	EFG165.001	MOWER, ASSEMBLY	1	EFG165
	EFG175.001	MOWER, ASSEMBLY	1	EFG175
2	EFG105.004	POWER IMPORT, ASSEMBLY	1	EFG105/115
	EFG125.004	POWER IMPORT, ASSEMBLY	1	EFG125/145
	EFG155.004	POWER IMPORT, ASSEMBLY	1	EFG155/165/ 175
3	EFGC125.012	GUARD, WELDMENT	1	EFG105/115/ 125
	EFGC125.012A	GUARD, WELDMENT	1	EFG145/155/ 165/175
4	FH-EFG105BELTKIT	BELT B38 NAPA #	2	EFG105/115/ 125
		BELT B38 NAPA #	3	EFG145/155/ 165/175
5	EFG125.006	HITCH FRAME, ASSEMBLY	1	
6	GB / T 96. 2-12×3	PLAIN WASHER 12	1	
7	GB / T5782-M12×90	BOLT M12x90	1	

Part # for EFG Mower Belts

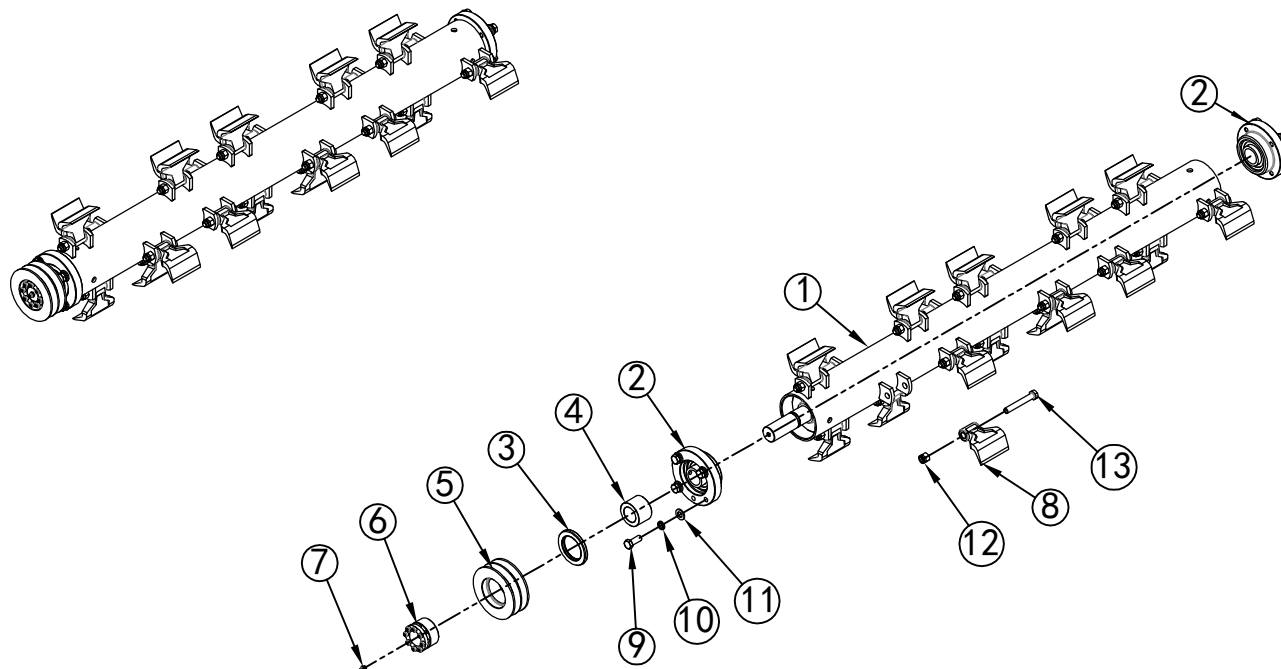
FH-EFG105BELTKIT	2 Belts
FH-EFG125BELTKIT	2 Belts
FH-EFG135BELTKIT	3 Belts
FH-EFG155BELTKIT	3 Belts
FH-EFG175BELTKIT	4 Belts

Napa Conversion # B38



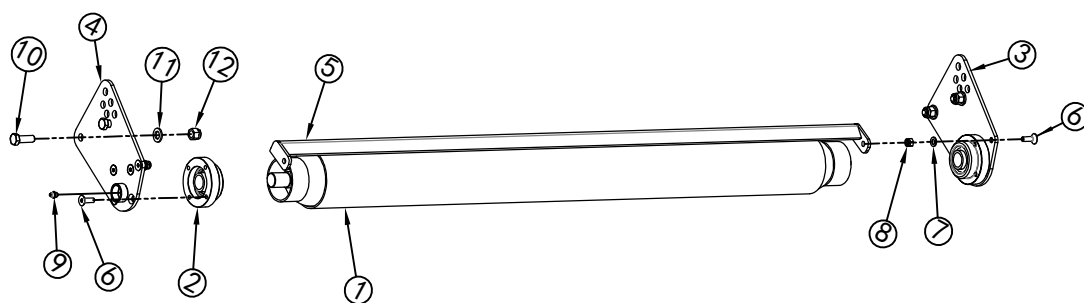
ITEM	PART No.	NAME & SPECIFICATION	QTY.	MODEL
1	EFG105.011	DECK, WELDMENT	1	EFG105
	EFG115.011	DECK, WELDMENT	1	EFG115
	EFG125.011	DECK, WELDMENT	1	EFG125
	EFG145.011	DECK, WELDMENT	1	EFG145
	EFG155.011	DECK, WELDMENT	1	EFG155
	EFG165.011	DECK, WELDMENT	1	EFG165
	EFG175.011	DECK, WELDMENT	1	EFG175
2	EFG105.002	ROTOR, ASSEMBLY	1	EFG105
	EFG115.002	ROTOR, ASSEMBLY	1	EFG115
	EFG125.002	ROTOR, ASSEMBLY	1	EFG125
	EFG145.002	ROTOR, ASSEMBLY	1	EFG145
	EFG155.002	ROTOR, ASSEMBLY	1	EFG155
	EFG165.002	ROTOR, ASSEMBLY	1	EFG165
	EFG175.002	ROTOR, ASSEMBLY	1	EFG175
3	EFG105.003	ROLLER, ASSEMBLY	1	EFG105
	EFG115.003	ROLLER, ASSEMBLY	1	EFG115
	EFG125.003	ROLLER, ASSEMBLY	1	EFG125
	EFG145.003	ROLLER, ASSEMBLY	1	EFG145
	EFG155.003	ROLLER, ASSEMBLY	1	EFG155
	EFG165.003	ROLLER, ASSEMBLY	1	EFG165
	EFG175.003	ROLLER, ASSEMBLY	1	EFG175
4	EFG125.108	PLATE	1	
5	EFGC125.014	LEFT SKID, WELDMENT	1	
6	EFGC125.015	RIGHT SKID, WELDMENT	1	
7	EFGC105.104	ROD, FENDER	1	EFG105
	EFGC115.104	ROD, FENDER	1	EFG115
	EFGC125.104	ROD, FENDER	1	EFG125
	EFGC145.104	ROD, FENDER	1	EFG145
	EFGC155.104	ROD, FENDER	1	EFG155
	EFGC165.104	ROD, FENDER	1	EFG165
	EFGC175.104	ROD, FENDER	1	EFG175
8	EFGC125.114	NARROW FENDER	1	

9	EFGC125.113	FENDER	10	EFG105
	EFGC125.113	FENDER	11	EFG115
	EFGC125.113	FENDER	12	EFG125
	EFGC125.113	FENDER	14	EFG145
	EFGC125.113	FENDER	15	EFG155
	EFGC125.113	FENDER	16	EFG165
	EFGC125.113	FENDER	17	EFG175
10	EFGC125.025	BRACKET, WELDMENT	1	
11	EFGC125.028	LEG, WELDMENT	1	
12	EFGC125.109	HITCH PIN, LOWER	2	
13	EFGC125.108	SPACER	2	
14	1G135.00.107	PIN	1	
15	GB1152-M8X1	GREASE NIPPLE M8x1	1	
16	GB / T97.1-12	PLAIN WASHER 12	7	
17	GB / T93-12	LOCK WASHER 12	3	
18	GB / T5783-M12×30	BOLT M12x30	3	
19	GB / T91-3. 2×20	COTTER 3.2x20	2	
20	GB / T 97. 1-10	PLAIN WASHER 10	2	
21	LP-11x45	LYNCH PIN 11x45	2	
22	GB / T5783-M12×35	BOLT M12x35	4	
23	GB / T889. 1-M12	LOCK NUT M12	4	
24	R-3.2	R-PIN 3.2	1	

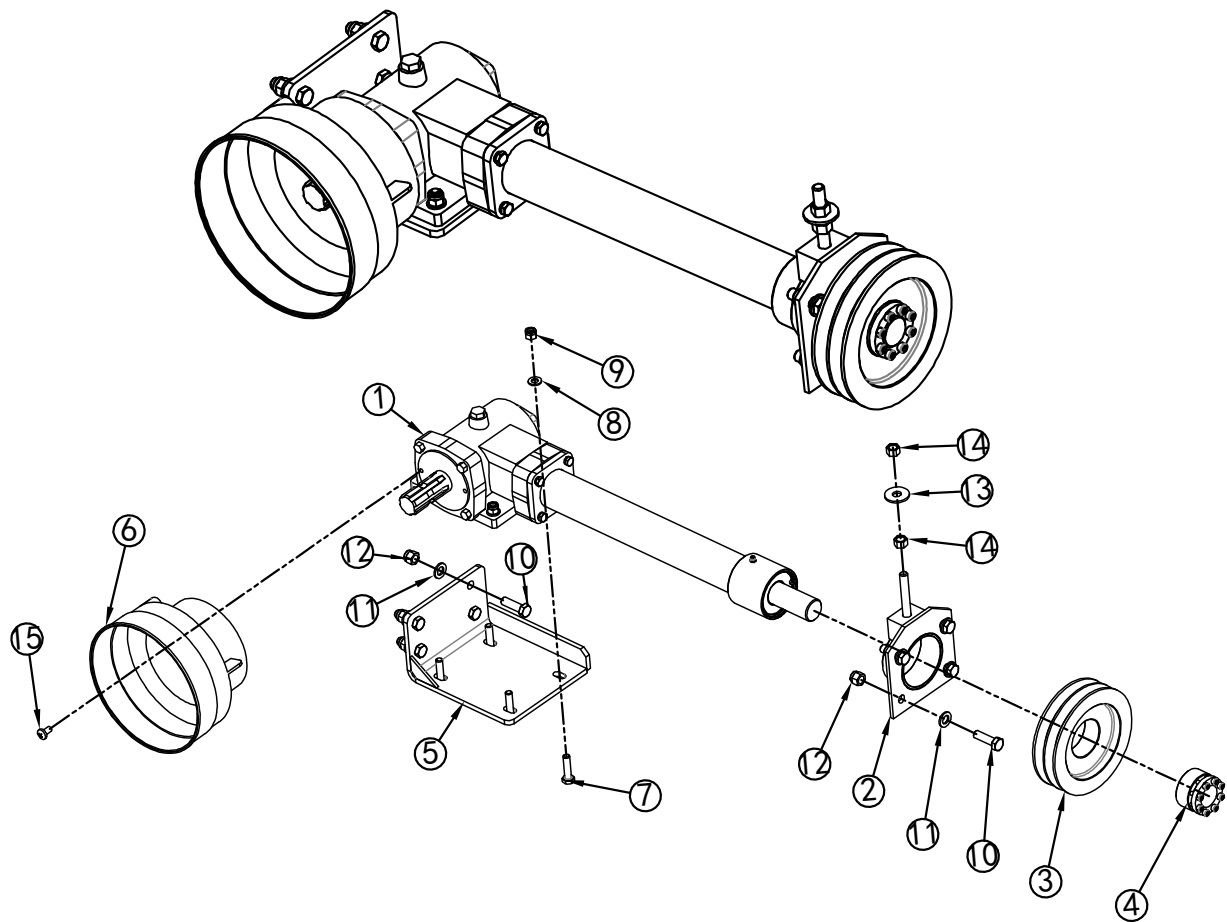


ITEM	PART No.	NAME & SPECIFICATION	QTY.	MODEL
1	EFG105.012	ROTOR, WELDMENT	1	EFG105
	EFG115.012	ROTOR, WELDMENT	1	EFG115
	EFG125.012	ROTOR, WELDMENT	1	EFG125
	EFG145.012	ROTOR, WELDMENT	1	EFG145
	EFG155.012	ROTOR, WELDMENT	1	EFG155
	EFG165.012	ROTOR, WELDMENT	1	EFG165
	EFG175.012	ROTOR, WELDMENT	1	EFG175
2	EFGC125.115A	BEARING UC207, SET	2	
3	GB / T13871. 1-FB55X80X8	SEAL FB55x80x8	1	
4	EFGC125.116	SLEEVE	1	
5	EFGC125.117	DRIVEN PULLEY	1	EFG105/115/125
	EFGC125.117A	DRIVEN PULLEY	1	EFG145/155/165/175
6	REACH 04-35X60	LOCKING DEVICE 04-35x60	1	
7	GB1152-M8X1	GREASE NIPPLE M8x1	1	
8	EFG125.101	BLADE	16	EFG105
	EFG125.101	BLADE	20	EFG115
	EFG125.101	BLADE	20	EFG125
	EFG125.101	BLADE	24	EFG145
	EFG125.101	BLADE	24	EFG155
	EFG125.101	BLADE	28	EFG165
	EFG125.101	BLADE	28	EFG175

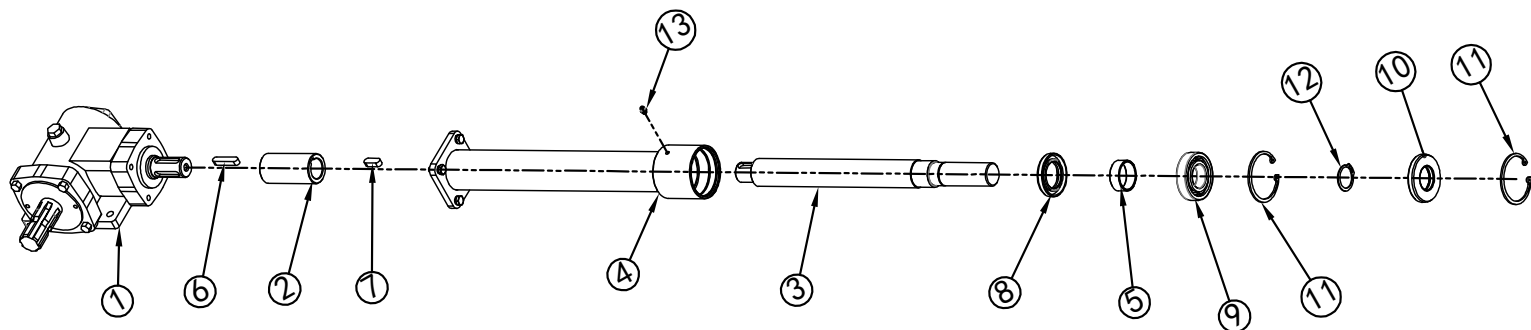
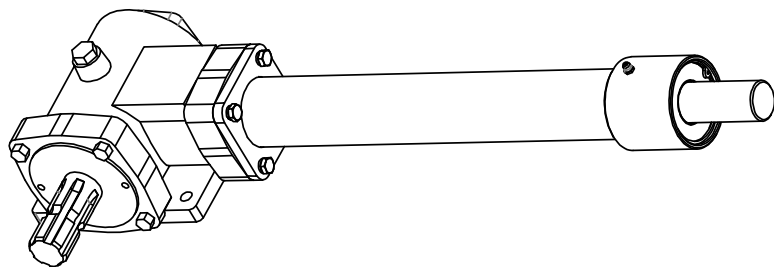
9	GB / T5783-M12×30	BOLT M12x30	8	
10	GB / T93-12	LOCK WASHER 12	8	
11	GB / T97.1-12	PLAIN WASHER 12	8	
12	GB / T889. 1-M12	LOCK NUT M12	16	EFG105
	GB / T889. 1-M12	LOCK NUT M12	20	EFG115
	GB / T889. 1-M12	LOCK NUT M12	20	EFG125
	GB / T889. 1-M12	LOCK NUT M12	24	EFG145
	GB / T889. 1-M12	LOCK NUT M12	24	EFG155
	GB / T889. 1-M12	LOCK NUT M12	28	EFG165
	GB / T889. 1-M12	LOCK NUT M12	28	EFG175
13	GB / T5782-M12×80	BOLT M12x80	16	EFG105
	GB / T5782-M12×80	BOLT M12x80	20	EFG115
	GB / T5782-M12×80	BOLT M12x80	20	EFG125
	GB / T5782-M12×80	BOLT M12x80	24	EFG145
	GB / T5782-M12×80	BOLT M12x80	24	EFG155
	GB / T5782-M12×80	BOLT M12x80	28	EFG165
	GB / T5782-M12×80	BOLT M12x80	28	EFG175



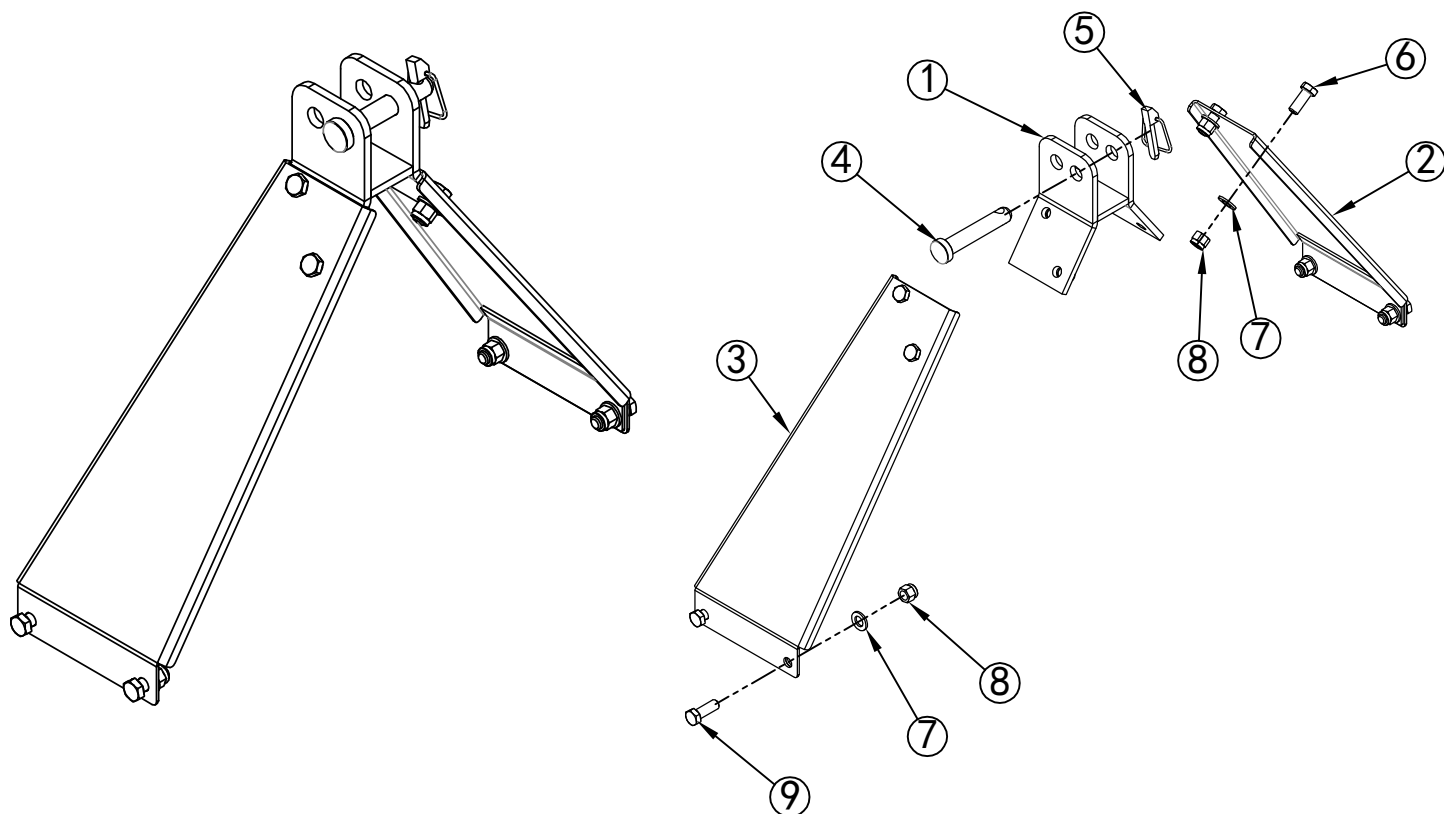
ITEM	PART No.	NAME & SPECIFICATION	QTY.	MODEL
1	EFGC105.017	ROLLER, WELDMENT	1	EFG105
	EFGC115.017	ROLLER, WELDMENT	2	EFG115
	EFGC125.017	ROLLER, WELDMENT	3	EFG125
	EFGC145.017	ROLLER, WELDMENT	4	EFG145
	EFGC155.017	ROLLER, WELDMENT	5	EFG155
	EFGC165.017	ROLLER, WELDMENT	6	EFG165
	EFGC175.017	ROLLER, WELDMENT	7	EFG175
2	EFGC125.107A	BEARING UC205, SET	2	
3	EFGC125.026	RIGHT MOUNTING PLATE, WELDMENT	1	
4	EFGC125.027	LEFT MOUNTING PLATE, WELDMENT	1	
5	EFGC105.016	SCRAPER, WELDMENT	1	EFG105
	EFGC115.016	SCRAPER, WELDMENT	1	EFG115
	EFGC125.016	SCRAPER, WELDMENT	1	EFG125
	EFGC145.016	SCRAPER, WELDMENT	1	EFG145
	EFGC155.016	SCRAPER, WELDMENT	1	EFG155
	EFGC165.016	SCRAPER, WELDMENT	1	EFG165
	EFGC175.016	SCRAPER, WELDMENT	1	EFG175
6	GB / T70. 3-M8×25	SCREW M8X25	10	
7	GB / T97.1-8	PLAIN WASHER 8	2	
8	GB / T889. 1- M8	LOCK NUT M8	2	
9	GB1152-M8X1	GREASE NIPPLE M8x1	2	
10	GB / T5783-M12×35	BOLT M12x35	4	
11	GB / T97.1-12	PLAIN WASHER 12	4	
12	GB / T889. 1-M12	LOCK NUT M12	4	



ITEM	PART No.	NAME & SPECIFICATION	QTY.	MODEL
1	EFG105. 005	GEARBOX, ASSEMBLY	1	EFG105/115
	EFG125. 005	GEARBOX, ASSEMBLY	1	EFG125/145
	EFG155. 005	GEARBOX, ASSEMBLY	1	EFG155/165/ 175
2	EFG125. 013	ADJUSTABLE BRACKET, WELDMENT	1	
3	EFGC125. 121	DRIVING PULLEY	1	EFG105/115/ 125
	EFGC125. 121A	DRIVING PULLEY	1	EFG145/155/ 165/175
4	REACH 04-35X60	LOCKING DEVICE 04- 35x60	1	
5	EFG125. 014	MOUNTING BASE, WELDMNET	1	
6	FM150. 120-EFG	COVER, DRIVING LINE	1	
7	GB / T 5783-M10×40	BOLT M10x40	4	
8	GB / T 97. 1-10	PLAIN WASHER 10	4	
9	GB / T889. 1-M10	LOCK NUT M10	4	
10	GB / T 5783-M12×40	BOLT M12x40	8	
11	GB / T97. 1-12	PLAIN WASHER 12	8	
12	GB / T889. 1-M12	LOCK NUT M12	8	
13	GB / T 96. 2-12×3	PLAIN WASHER 12	1	
14	GB / T6170-M12	NUT M12	2	
15	GB / T 818-M8×16	SCREW M8x12	2	



ITEM	PART No.	NAME & SPECIFICATION	QTY.	MODEL
1	XH30. 290Z. 01W	GEARBOX, SET	1	
2	EFG125. 201	COUPLING	1	
3	EFG105. 202	SHAFT	1	EFG105/115
	EFG125. 202	SHAFT	1	EFG125/145
	EFG155. 202	SHAFT	1	EFG155/165/ 175
4	EFG105. 041	FLANGE TUBE, WELDMENT	1	EFG105/115
	EFG125. 041	FLANGE TUBE, WELDMENT	1	EFG125/145
	EFG155. 041	FLANGE TUBE, WELDMENT	1	EFG155/165/ 175
5	EFG125. 203	SPACER	1	
6	GB1096-A10X8X45	KEY A10x8x45	1	
7	GB1096-A10X8X28	KEY A10x8x28	1	
8	GB / T13871. 1- FB40X65X8	SEAL FB40x65x8	1	
9	GB / T276-6207	BEARING 207	1	
10	GB / T13871. 1- FB35X72X8	SEAL FB35x72x8	1	
11	GB893. 1-A72	INTERNAL RETAINER A72	2	
12	GB894. 2-B35	EXTERNAL RETAINER B35	1	
13	GB1152-M6	GREASE NIPPLE M6	1	
14	GB / T93-8	LOCK WASHER 8	4	
15	GB / T5783-M8×20	BOLT M8x20	4	



ITEM	PART No.	NAME & SPECIFICATION	QTY.	MODEL
1	EFGC125. 022	BRACKT, WELDMENT	1	
2	EFGC125. 021	RIGHT PLATE, WELDMENT	1	
3	EFGC125. 023	LEFT PLATE, WELDMENT	1	
4	EFGC125. 123	HITCH PIN, UPPER	1	
5	LP-11x45	LYNCH PIN 11x45	1	
6	GB / T5783-M12×30	BOLT M12x30	4	
7	GB / T97. 1-12	PLAIN WASHER 12	8	
8	GB / T889. 1-M12	LOCK NUT M12	8	
9	GB / T5783-M12×35	BOLT M12x35	4	



FHM
FARMER-HELPER
MACHINERY COMPANY

Parts Request Form

E-mail cservice@betstco.com

Name: _____

Address: _____

City State Zip: _____

Phone: _____

E-mail: _____

Model Number: _____

Serial Number: _____

Purchased From: _____

Purchase Date: _____

Item No.	Description	Qty	Price	Amount

Comments:

FARMER-HELPER Limited Warranty

Unless otherwise stated on purchase invoice, Betstco warrants to original Purchaser that Farmer-Helper products are free from major defects in material under normal use and service for a period of 90 Days from the date the product is purchased or shipped, whichever is later. Commercial use 90 days. Use at address that is not yours, is considered commercial use. Consumable, Expendable, Wear Items (Rubber plastic parts, hydraulic hoses, belts, tires, cables, blades, tines, wedges, teeth, tiups, chains, pins, brushes, filters, etc) and cracked hydraulic pumps, bent or broken cylinder rods are not covered under this warranty. Warranty does not cover items that have been modified, damaged by abuse or usage not in accordance with design or maintenance.

Betstco obligation under this warranty is to repair or replace defective upon approval by; Betstco, 83371 Melton Rd. N, Creswell OR 97426 that Warranty Claim is valid. Product shall be returned upon request of Betstco. Transportation charges to be prepaid by user.

Gasoline or diesel engines used to powered Farmer-Helper products are covered by the warranty of the appropriate engine manufacturean Purchaser must look to the engine manufacture for all issues relating to engine operation.

Betstco assumes no responsibility for outside labor.

PERMISSABLE BY APPLICABLE LAW, BETSTCO HEREBY DISCLAIMS ALL WARRANTIES OF ANY KIND, EITHER EXPRESS OR IMPLIED, INCLUDING, ANY IMPLIED WARRANTIES WITH RESPECT TO THE PRODUCT PURCHASED, WITHOUT LIMITING THE GENERALITY OF THE FOREGOING, BETSTCO HEREBY EXPRESSLY DISCLAIMS ALL LIABILITY FOR PRODUCT DEFECT OR FAILURE, CLAIMS THAT ARE DUE TO NORMAL WEAR, PRODUCT MISUSE, ABUSE, PRODUCT MODIFICATION, IMPROPER PRODUCT SELECTION, NON-COMPLIANCE WITH ANY CODES, OR MISAPPROPRIATION. BETSTCO MAKES NO WARRANTIES TO THOSE DEFINED AS "CONSUMERS" IN THE MAGNUSON-MOSS WARRANTY FEDERAL TRADE COMMISION IMPROVEMENTS ACT. THE FOREGOING EXCLUSION OF IMPLIED WARRANTIES DO NOT APPLY TO THE EXTENT PROHIBITED BY LAW. PLEASE REFER TO YOUR LOCAL LAWS FOR ANY SUCH PROHIBITIONS.

THERE SHALL BE NO LIABILITY FOR PRODUCT LIABILITY OR LIABILITY ON THE PART OF BETSTCO FOR ANY GENERAL SPECIAL OR CONSEQUENTIAL DAMAGES ARISING OUT OF THE SALE OR USE OF ANY PRODUCTS SOLD BY BETSTCO OR AN AGENT THEREOF, BETSTCO MAKES NO WARRANTIES, EXPRESS OR IMPLIED, (INCLUDING, BUT NOT LIMITED TO, ANY WARRANTY OF MERCHANTABILITY OR FITNESS OF THE PRODUCTS FOR ANY PURPOSE) WITH RESPECT TO THE PRODUCTS COVERED BY THIS AGREEMENT EXCEPT AS IN THIS PARAGRAPH OTHERWISE EXPRESSLY PROVIDED.

THIS IS THE SOLE AND ONLY WARRANTY OF VALUE-LEADER PRODUCTS, NO OTHER WARRANTY IS APPLICABLE, EITHE EXPRESSED OR IMPLIED, IN FACT BY LAW.

This warranty shall not be interpreted to render Betstco, or any authorized agent liable for injury or damages of any kind or nature, direct, consequential, or contingent, to a person or property.

The sole and only remedy in regard to any defective product shall be the repair or replacement thereof as herein provided, Betstco, agent(s) of Betstco shall not be liable for any consequential, special, incidental or punitive damages resulting from or caused by any such defects

Betstco reserves the rights to make improvements in design or changes in specifacations at any time, without incurring any obligations to owners of the units previously sold.

WARRANTY VOID IF REGISTRATION IS NOT RECEIVED OR RECORDED ONLINE WITHIN 30 DAYS OF PURCHASE DATE OR SHIP DATE, WHICHEVER IS LATER.

ITEM: _____ **MODEL#** _____ **PURCHASE DATE:** ____/____/____

PURCHASED FROM: _____ **GIFT INV# ORDER#** _____

OWNER NAME: _____ **SERIAL #** _____

OWNER ADDRESS: _____

CITY: _____ **COUNTY:** _____ **ST:** _____ **ZIP:** _____

PHONE: _____ **EMAIL:** _____

ACCEPTANCE OF RESPONSIBILITY:

I (PURCHASER) HAVE READ OPERATORS MANUAL AND LIMITED WARRANTY OR SOMEONE HAS READ/AND EXPLAINED ALL INSTRUCTIONS TO ME. I UNDERSTAND THIS WARRANTY DOES NOT COVER ANY LABOR AND THAT ALL DISPUTES WILL BE SETTLED BY BINDING ARBITRATION. BINDING ARBITRATION IS CONDUCTED BY THE BETTER BUSINESS BUREAU (BBB) LOCATED AT 4004 SW KRUSE WAY PLACE ST 375 LAKE OSWEGO OR 97035 OR THE CURRENT BBB LOCATION CLOSEST TO BETSTCO. I ACKNOWLEDGE MY LIMITED WARRANTY IS VOID IF ANY ATTEMPT TO REPAIR OR REPLACE DEFECTIVE PARTS HAS BEEN MADE BY UNAUTHORIZED PERSONNEL. I ACKNOWLEDGE RECEIPT OF MY OPERATORS MANUAL AND HAVE READ THE SAFE OPERATION SECTION. I ACKNOWLEDGE UNDERSTANDING MAINTENANCE AND SAFE OPERATION REQUIREMENTS, ITEM SPECIFICATIONS, OPERATION, CONTROLS AND STORAGE REQUIREMENTS. **I UNDERSTAND THAT IS ALONE AM RESPONSIBLE FOR PROPER MAINTENANCE, CARE AND SAFE OPERATION OF THIS FARMER-HELPER ITEM**

I (PURCHASER) AGREE THAT PERSONS NOT FAMILIAR WITH THE OPERATION OF THIS ITEM SHOULD NOT BE ALLOWED TO USE IT. CHILDREN ESPECIALLY SHOULD NOT OPERATE OR BE NEAR POWER PRODUCTS WHEN IN USE. ANYONE OPERATING VALUE-LEADER PRODUCTS SHOULD HAVE READ OPERATIONS MANUALS AND SAFETY MANUALS.

OWNERS SIGNATURE: x _____ **DATE:** ____/____/____

YOU MUST SIGN THIS WARRANTY AND MAIL OR FAX A COPY TO BETSTCO, 83371 MELTON RD, CRESWELL OR, 97426. IF YOU PREFER YOU MAY COMPLETE YOUR REGISTRATION ONLINE AT <https://betstco.com/product-registration/>. THIS WARRANTY IS NOT EFFECTIVE UNLESS PURCHASER COMPLETE REGISTRATION AND WARRANTY FOR WITHIN 30 DAYS OF PURCHASE OR SHIP DATE WHICHEVER IS LATER.

NOTE: WE MAY REFUSE WARRANTY OF ANY KIND UNLESS BETSTCO, RECEIVES A COMPLETED, LEGIBLE AND SIGNED WARRANTY REGISTRATION. IT IS THE RESPONSIBILITY OF THE PURCHASER TO ASSURE THAT REGISTRATION DOCUMENT IS RECEIVED BY

**1 YEAR EXTENDED WARRANTY & REGISTRATION
FARMER-HELPER IMPLEMENTS
BRANDED PRODUCTS
1 YEAR EXTENDED WARRANTY**

1 Year Extended Warranty amends to original Recorded Warranty Registration the time period of described coverage. Extended Warranty does not apply to consumable and Expendable Item as described in Product Warranty Registration.

This amendment does not affect any other part of recorded Warranty Registration or policy.

No one is authorized to alter, modify, or enlarge this Amendment to original recorded Warranty Registration

**EXTENDED REGISTRATION & PAYMENT MUST BE RECEIVED
WITHIN 30 DAYS OF PURCHASE DATE**

EXTENDED WARRANTY REGISTRATION

PRODUCT & MODEL # _____

SERIAL # _____

OWNER NAME : _____

BETSTCO INVOICE # _____

ACCEPTANCE OF RESPONSIBILITY:

I (PURCHASER) HAVE READ AND UNDERSTAND THE EXTENDED WARRANTY OR SOMEONE HAS READ AND EXPLAINED ALL THE ABOVE TO ME. I UNDERSTAND THIS EXTENDED WARRANTY DOES NOT COVER ANY LABOR. I HAVE FILED MY ORIGINAL WARRANTY REGISTRATION AND FULLY UNDERSTAND MY REQUIREMENTS. ***I UNDERSTAND THAT I ALONE AM RESPONSIBLE FOR PROPER MAINTENANCE, CARE AND SAFE OPERATION OF THIS TRACTOR IMPLEMENT.***

OWNERS SIGNATURE: x _____

DATE: ____/____/____

FAX TO 1-541-895-2756

YOU MUST SIGN THIS WARRANTY AND MAIL OR FAX A COPY TO BETSTCO, 83371 MELTON RD, CRESWELL OR. IF YOU PREFER YOU MAY COMPLETE YOUR REGISTRATION ONLINE AT <https://betstco.com/product-registration/>. THIS WARRANTY IS NOT EFFECTIVE UNLESS PURCHASER COMPLETE REGISTRATION AND WARRANTY FOR WITHIN 30 DAYS OF PURCHASE OR SHIP DATE WHICHEVER IS LATER.

NOTE: WE MAY REFUSE WARRANTY OF ANY KIND UNLESS BETSTCO, RECEIVES A COMPLETED, LEGIBLE AND SIGNED WARRANTY REGISTRATION. IT IS THE RESPONSIBILITY OF THE PURCHASER TO ASSURE THAT REGISTRATION DOCUMENT IS RECIEVED BY