

FH-FME Series



FHM

**FARMER-HELPER
MACHINERY COMPANY**



TIGHTEN ALL NUTS AND BOLTS!

OPERATION & PARTS MANUAL

Please read these instructions before using. Always grease all fittings and be sure to always check and fill with oil before operating! Retain this manual for future use.

BETSTCO

www.Betstco.com

541-895-3083 M-F 7am-4pm PST

RUGGED LABOR SAVING EQUIPMENT SINCE 1995 83371 Melton Rd, Creswell OR 97426



Farmer-Helper EFGCN Series Specifications		
SPEC	FH-EFGCN195	FH-EFGCN220
Working Width	78"	86"
Overall Width	83"	92"
Min. HP Req	35 HP	40 HP
Hitch	Cat I or II	Cat I or II
Gear Box Rating	65 HP	65 HP
Cutting Offset	16"	24"
27 oz. Hammer Blades	32 Hammer	36 Hammer
Optional "Y" Grass Blades	64 Blades	72 Blades
Housing Thickness	Reinforced 6 Gauge	Reinforced 6 Gauge
Side Plate Thickness	5/16"	5/16"
Roller Dia.	4"	4"
Rotor Shaft Dia	4 1/2"	4 1/2"
Blade Swing	14"	14"
No of Belts	4 Belts	4 Belts
3-Pt Conn. Width	27 1/2 - 40"	27 1/2 - 40"
Driveline Type	Series 5 Quick Connect, Shear Bolt, 6-Spline	Series 5 Quick Connect, Shear Bolt, 6-Spline
Warranty	2 Year	2 Year
Weight	865 lbs	935 lbs
Crated Weight	890 lbs	985 lbs

FMEH has 17" of Adjustable Hydraulic Offset

Uses:

Perfect for use after storms when debris is scattered throughout areas usually maintained with normal mowers ~ Multi-purpose machines for mulching foliage and sticks ~ ideal for thick grass, sticks, undergrowth and light vine mulching ~ vegetable & pasture topping ~ roadside maintenance.

Features:

Cutting height controlled by adjustable skids ~ high strength mulching blades ~ belt driven ~ safety flaps to prevent debris being thrown ~ extra strong and designed with safety in mind ~ support leg for storage ~ solid hitch ~FMEH models include hydraulic shift kit.

SAFETY INSTRUCTIONS



Before operating the Flail Mower read the following safety instructions. Failure to comply with these warnings may result in serious injury or death.

CONGRATULATIONS! On the purchase of your new Betstco Flail Mower. This information is to assist you in preparing, operating and maintaining your mower. Please read and understand the information completely before operating your mower, paying special attention to all the safety details. Keep this manual handy for a ready reference.

1.1 SAFETY FIRST

YOU are responsible for the SAFE operation and maintenance of your flail mower. YOU must ensure that you and anyone else who is going to operate, maintain or work around the flail mower is familiar with the operating and maintenance procedures and related SAFETY information contained in this manual. This manual will take you step-by-step through your working day and alert you to all good safety practices that should be adhered to while operating the flail mower.

Remember, YOU are the key to safety. Good safety practices not only protect you but also the people around you. Make these practices a working part of your safety program. Be certain that EVERYONE operating this equipment is familiar with the recommended operating and maintenance procedures and follows all the safety precautions. Most accidents can be prevented. Do not risk injury or death by ignoring good safety practices.

Make sure all operator's knows how to properly operate this machine.

The most important safety feature on this equipment is a SAFE operator. It is the operator's responsibility to read and understand ALL safety and operating instructions in the manual and to follow these. All accidents can be avoided.

A person who has not read and understood all operating and safety instructions is not qualified to operate the machine. An untrained operator jeopardizes himself and bystanders to possible serious injury or death.

Do not modify the equipment in any way. Unauthorized modification may weaken the function and/or safety and could affect the life of the equipment.

Think SAFETY! Work SAFELY!

1.2 GENERAL SAFETY

1. Read the operator's manual and all safety signs carefully before operating, maintaining, adjusting or removing the flail mower.
2. Do not allow passengers to ride on the flail mower
3. Operate only at a safe distance from bystanders. Clear the area of people, especially small children, before starting.
4. Stop PTO before dismounting tractor.
5. Keep feet and hands away from under flail mower at all times.
6. Keep all shields in place. If shield removal becomes necessary for repairs, replace the shield prior to use.

SAFETY INSTRUCTIONS

7. Do not stay between the tractor and the flail mower.
8. Do not approach the flail mower until all motion has stopped.
9. All rotary blades have the ability to discharge objects at high speeds, which could result in serious injury to bystanders or passers-by, use with extreme caution.
10. Place all controls in neutral, stop tractor engine, set park brake, remove ignition key and wait for all moving parts to stop before servicing, adjusting, repairing, attaching or removing.
11. Review safety related items annually with all personnel who will operate or maintain the flail mower.
12. Do not operate machine if you feel unwell or physically unfit, in which case you should stop working.
13. This machine was designed with safety very much in mind. However, there is no real substitute for caution and attention in preventing accidents. Once an accident has happened, it is too late to think about what you should have done.
14. Use a tractor equipped with a Roll Over Protective Structure (ROPS). Always wear your seat belt. Serious injury or even death could result from falling off the tractor – particularly during a turnover when the operator could be pinned under the ROPS or the tractor.
15. Never exceed the limits of a piece of machinery. If its ability to do a job, or to do so safely, is in question – DON'T TRY IT .
16. Clear working area of stones, branches or hidden obstacles that might be hooked or snagged, causing injury or damage.

1.3 OPERATING SAFETY

1. Read and understand the operator's manual and all safety signs before operating, servicing, adjusting, repairing or removing.
2. Do not allow riders.
3. Install and secure all guards and shields before starting or operating.
4. Keep hands, feet, hair and clothing away from moving parts.
5. Place all controls in neutral, stop tractor engine, set park brake, remove ignition key and wait for all moving parts to stop before servicing, adjusting, repairing , attaching or removing.
6. Place all tractor and machine controls in neutral before starting.
7. Never start or operate machine unless sitting on tractor seat.
8. Clear the area of bystanders, especially small children, before starting
9. Stay away from PTO shaft and machine when engaging PTO. Keep others away.
10. Use warning lights on tractor when transporting.
11. Do not put hands or feet under machine while tractor engine or machine is running.
12. Do not operate flail mower in the raised position.
13. Objects can be thrown out from under machine with sufficient force to severely injure people. Stay away from machine when it is running. Keep others away.
14. Always know what you are cutting. Never operate flail mower in an area that has hidden obstacles. Remove sticks, stones, wire or other objects from working area before starting.
15. Review safety instructions with all operators annually.

SAFETY INSTRUCTIONS

1.4 STORAGE SAFETY

1. Store the machine in an area away from human activity.
2. Do not permit children to play on or around the stored machine.
3. Store the machine in a dry, level area.
4. Clean grease and oil as required and protect it from the elements.

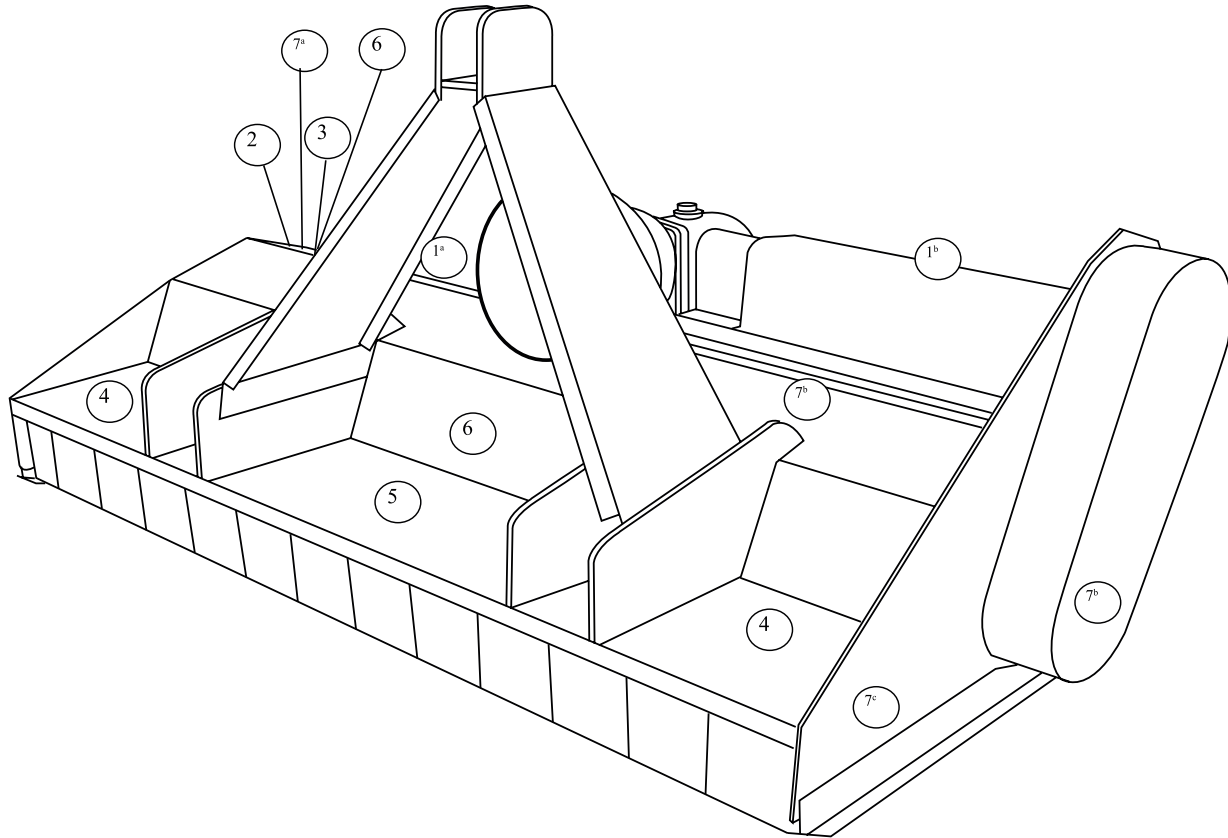
1.5 MAINTENANCE SAFETY

1. Good maintenance is your responsibility. Poor maintenance is an invitation to trouble.
2. Follow good shop practices.
3. Keep service area clean and dry.
4. Be sure electrical outlets and tools are properly grounded.
5. Use adequate light for the job at hand.
6. Make sure there is plenty of ventilation. Never operate the engine of the tractor in a closed building. The exhaust fumes may cause asphyxiation.
7. Before working on this machine, shut off the engine, set the brakes, and remove the ignition key.
8. Never work under equipment unless it is secured by a mechanical stand.
9. Use personal protection devices such as eye, hand and hearing protectors, when performing any service or maintenance work. Use heavy gloves when handling blades.
10. Only use genuine parts for service and maintenance.
11. A fire extinguisher and first aid kit should be kept readily accessible while performing maintenance on this equipment.
12. Periodically tighten all bolts, nuts and screws and check that all pins are properly installed to ensure unit is in a safe condition.
13. When completing a maintenance or service function, make sure all safety shields and devices are installed before placing machine in service.

SAFETY INSTRUCTIONS

1.6 SAFETY & MODEL DECAL

The position of safety decals are shown in the illustrations below. Good safety requires that you familiarize yourself with the various safety signs, and increase your SAFETY AWARENESS.



1^a FME-125

1^b

2 Model
Serial No

4



5



6



3 ST:

8



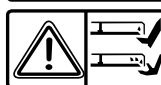
7^a



9



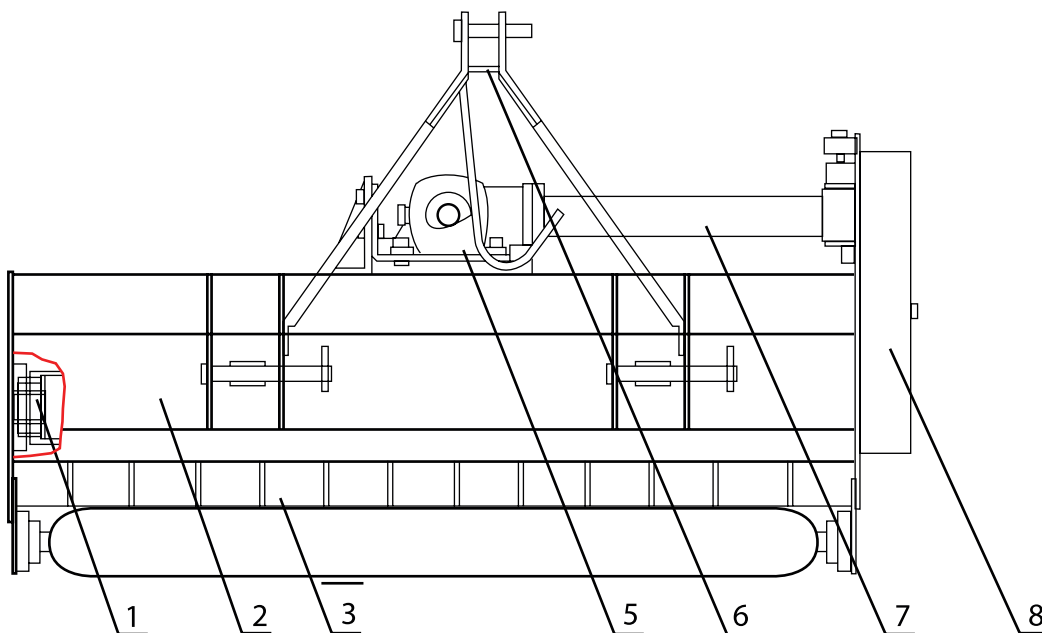
7^b



7^c

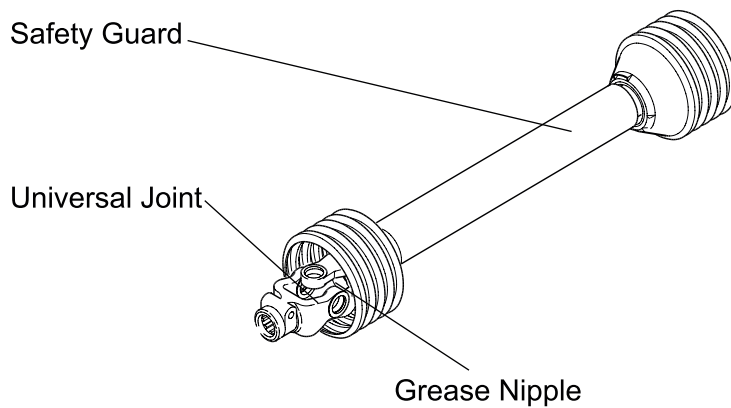


SAFETY INSTRUCTIONS



1. Blade axle	2. Blade axle cover	3. Combined fender
	5. Gear box	6. Top Link Bracket
7. Transmission shaft	8. Belt & Pulley Cover	

PTO•Shaft



OPERATION

2.1 CHECKING BEFORE OPERATING

Before operating the machine, the following areas should be checked off:

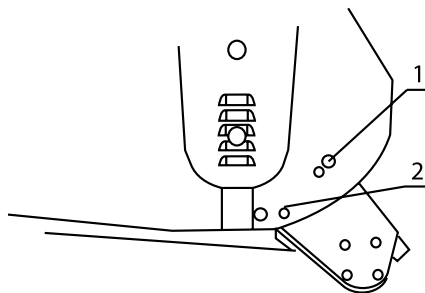
1. Before starting up the machine, check and lubricate all grease points, on the machine and drive shaft.
2. Use only an agricultural tractor with horsepower within limits of the implement.
3. Check that the machine is properly attached to the tractor. Be sure retainers are used on the mounting pins.
4. Be sure extra weights are mounted on the front of the tractor, if required.
5. Check the oil level in the gearbox. Add as required.
6. Check that the tractor PTO shaft turns freely and that the machine driving shaft can telescope easily.
7. Check the blades. Be sure they are not damaged or broken and swing freely in their mount. Repair or replace as required.
8. Check and tighten the blade bolts.
9. Check for entangled material in all rotating parts. Remove this material.
10. Install and secure all guards, doors and covers before starting.
11. Before installing the PTO, ensure the engine is stopped and the PTO shaft is in safe working order.
12. All other persons shall leave the ground before connecting the driving power from the tractor. Keep the output of the tractor at 540 RPM.
13. Before cleaning, repairing and lubricating the machine, stop the motor and take the key away with you.
14. When the PTO shaft is not connected with the tractor, support it through the frame to protect it from lying in the dirt.
15. Don't approach the machine when it is operating.

2.2 ADJUSTMENTS

2.2.1 ADJUSTING THE HEIGHT

To get the most out of your flail mower, it should be set within the recommended height.

To save fuel and power, and reduce wear and tear, the cutting height must be regulated correctly.



When adjusting the working height, loosen screw (1), remove screw (2) on both sides; The roller height (see following drawing); bolt the parts on the set position. The lowest hole is the highest working height; put the screw (2) into the set hole; tighten screw (1) and screw (2).

OPERATION

2.2.2 FLAIL MOWER ADJUSTMENT

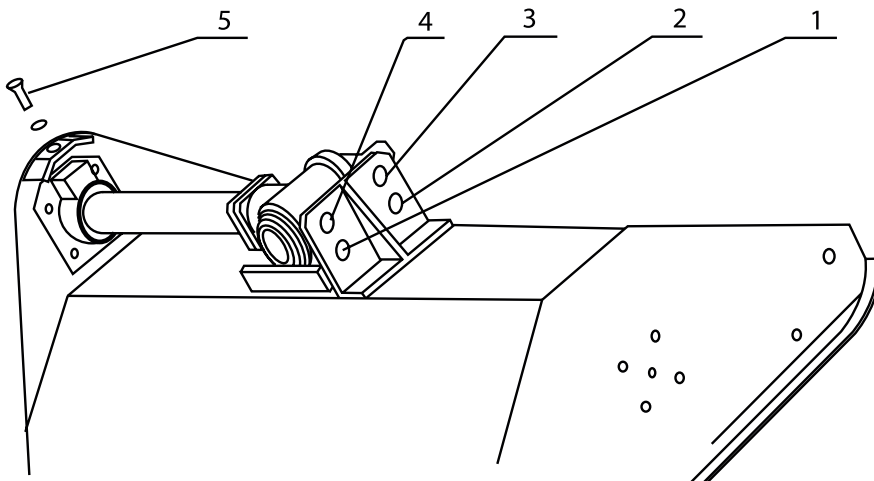
1. On a flat piece of ground, attach the flail mower to the tractor using the three point linkage
2. Use a solid adjustable top link
3. Lower the three point linkage to its lowest position
4. With the roller at the rear in contact with the ground, adjust the length of the top link so that the lower edge at the side of the flail mower is parallel with the ground
5. Rotate the blade drum by hand so that a row of blades hang vertically towards the ground.
6. Measure the clearance between the bottom of the extended blades and the ground.
 - Minimum 50mm
 - Note in rough or lumpy paddocks the clearance needs to be increased to ensure that the blades dont impact the ground in operation.
7. Adjust the roller height to increase or decrease the blade clearance as required
8. Go through steps 4 to 7 until the required clearance is achieved.

When the flail mower has been set up with the required tolerances:

Operate the flail mower with tractor in low range and the PTO delivering 540 RPM

2.3 REGULATING THE TENSION OF DRIVING BELT

- Remove the driving belt cover.
- Loosen screws 1. 2. 3. 4
- Tighten the driving belt with screw 5.
- Tighten the screws 1. 2. 3. 4.
- Put back the driving belt cover.
- The recommended forward speed is 1.5 km/h, However, it must be varied according to the grass height, thickness and working condition.
- The driving belts are tightened by hand at the adjusting point 5 up to the correct tension. Tighten all screws after adjustment.
- The driving belts should be replaced when they are damaged or worn.



OPERATION

2.4 STARING UP

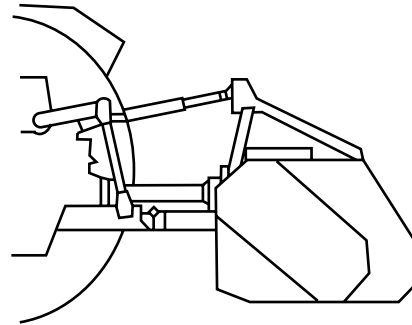
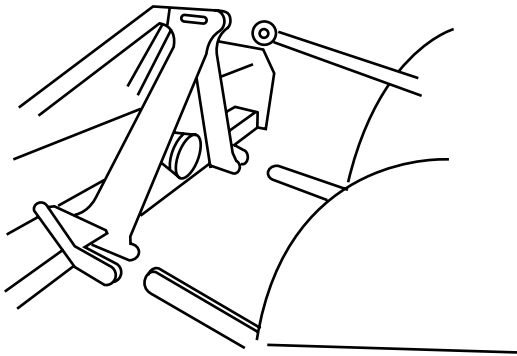
Before starting the machine, check and adjust the following items:

- Tension of trapezoidal driving belt.
- Oil level of gear.
- Grease nipples on bearings and PTO shaft.
- All bolts, nuts and screws.

Follow all safety precaution detailed in this manual .

The machine is equipped with a standard category I , three point linkage

Back the tractor into position in front of the flail mower, lower the tractor hydraulic lift arms. Turn the tractor off. Maneuver the implement by hand and attach the lower link arms to the lower link pin. Ensure they are secured with lynch pin. Attach the top link to the top link bracket. Adjust the lower link sway chains to allow minimal lateral movement. Attach the PTO shaft to the tractor PTO ensuring it has been cut to the required length



SERVICE AND MAINTENANCE

3.1 SERVICE

3.1.1 FLUIDS AND LUBRICANTS

1. Grease:
Use multi-purpose lithium based grease.
2. Gear Box Oil:
Use 80-90 Gear oil.
3. Storing Lubricants:
Your machine can operate at top efficiency only if clean lubricants are used. Use clean containers to handle all lubricants. Store them in an area protected from dust, moisture and other contaminants.

3.1.2 GREASING

1. Use a hand-held grease gun for all greasing.
2. Wipe grease nipple with a clean cloth before greasing, to avoid injecting dirt and grit.
3. Replace broken nipples immediately.
4. If nipples will not take grease, remove and clean thoroughly. Also clean lubricant passageway. Replace nipple if necessary.

3.2 MAINTENANCE

The period recommended is based on normal operating conditions. Severe or unusual conditions may require more frequent maintenance.

3.2.1 8 HOURS OR DAILY MAINTENANCE

- Check all nuts and bolts, tighten as required.
- Check the blade and blade bolts every day and replace the damaged parts. Don't install damaged, worn and unbalanced blade. Replace sleeves as they become worn.

NOTE:

The operator shall put on gloves and use suitable tools before changing blades.

- Check the oil in gearbox. Fill up to line if necessary.
- Pump grease into each grease nipple three to five times.
- Clean the implement; remove grass and mud.

3.2.2 SEASON MAINTENANCE

- Check the machine as in the terms of daily maintenance.
- Check the oil in gearbox; replace it if it is contaminated.
- Check the blade spindles for wear and tear. If worn, disassemble and clean them and replace them if it is necessary, grease as required.

3.2.3 ANNUAL MAINTENANCE

- Clean mud and grass off the machine thoroughly.
- Check and clean blade axles. Replace oil seals and press grease into them.
- Check all blades, replace them if they are wear-out or damaged.
- Repair the side skirts back into it's original size and shape. Replace damaged or broken protective devices.

SERVICE AND MAINTENANCE

- Drain oil from the gearbox thoroughly. Check and clean it. Fill new gear oil up to the dedicated oil level.

The oil should be drained out after the first 50 hours of operation. Then the oil shall be changed every 250 hours, or at least once a year.

The draining procedure is as follows: remove the draining bolt under the gear box, so that the oil drains off. After the oil is drained out, put back the cover and fill the gear oil up to the dedicated oil level.

	8hrs/ Daily			40hrs/Weekly			Annually		
Lubricate PTO Shaft	✓			✓			✓		
Lubricate Caster Wheels	✓			✓			✓		
Lubricate Blade Spindle	✓			✓			✓		
Check Gear Box Oil Level				✓			✓		
Clean Machine							✓		
Lubricate and Clean PTO Shaft Cover							✓		

3.2.4 PTO SHAFT MAINTENANCE

The PTO shaft is designed to telescope to allow for dimensional changes as the machine goes through its operating range. A tubular guard encloses the driving components and is designed to turn relative to the driving components. The shaft should telescope easily and the guard turn freely on the shaft at all times. Annual disassembly, cleaning and lubrication is recommended to ensure that all components function as intended. To maintain the shaft, follow this procedure:

1. Remove the shaft from the machine.
2. Pull shaft apart.
3. Use a screwdriver to pry the tabs out of the sleeves on each end. There are 3 tabs per guard.
4. Pull the shaft out of the plastic tubular guard.
5. Use a solvent to clean the male and female portions of the telescoping ends.
6. Apply a light coat of grease to each end.
7. Clean the grooves on each end where the tabs are located. Clean each tab also.
8. Apply a light coat of grease to each groove.
9. Insert the shaft into its respective guard and align the slots with the groove.
10. Insert the tabs through the slots and seat in the groove.
11. Check that each guard turns freely on the shaft.
12. Assemble the shaft.
13. Check that the shaft telescopes easily.
14. Replace any components that are damaged or worn.
15. Install the shaft on the machine.

SERVICE AND MAINTENANCE

3.2.5 GEARBOX MAINTENANCE

The gearbox used on the flail mower will give many years of trouble free service with minimal maintenance requirements. Maintain the gearbox by following this procedure:

Oil level:

- Remove the level plug from the rear or side of the gearbox.
- Add oil through the filler plug located on top of gearbox until oil comes out of level plug.
- Add through the fill plug if required.
- If gearbox has a dipstick on filler plug, then fill to indicator mark.

IMPORTANT: Check the oil level only when the unit is cold and the machine is on the level.

3.3 STORAGE

- Clean the machine inside and out so as to avoid corrosion.
- Don't spray water on the rolling bearing if you clean the machine with high pressure sprayer.
- Check and clean the universal joint, driving belt press roller, or replace them if they are not in good condition.
- Spread oil on all parts required.
- Recoat the parts rubbed and damaged for anti corrosion.
- Store the machine in a dry, level area.

3.4 OPERATION AFTER STORAGE

- Before the machine is started up, check the following items regularly:
- Check oil level and add it if not enough.
- Check and tighten all screws and nuts;
- Check the blade state.
- Check the air hole on the gearbox. If it is blocked, clean or open the hole with compressed air.
- Don't spread oil or grease on the driving belts. If there is oil or grease on the belts, wipe the belts, to avoid slippage and premature wear.

Check all moving parts and replace them if necessary.

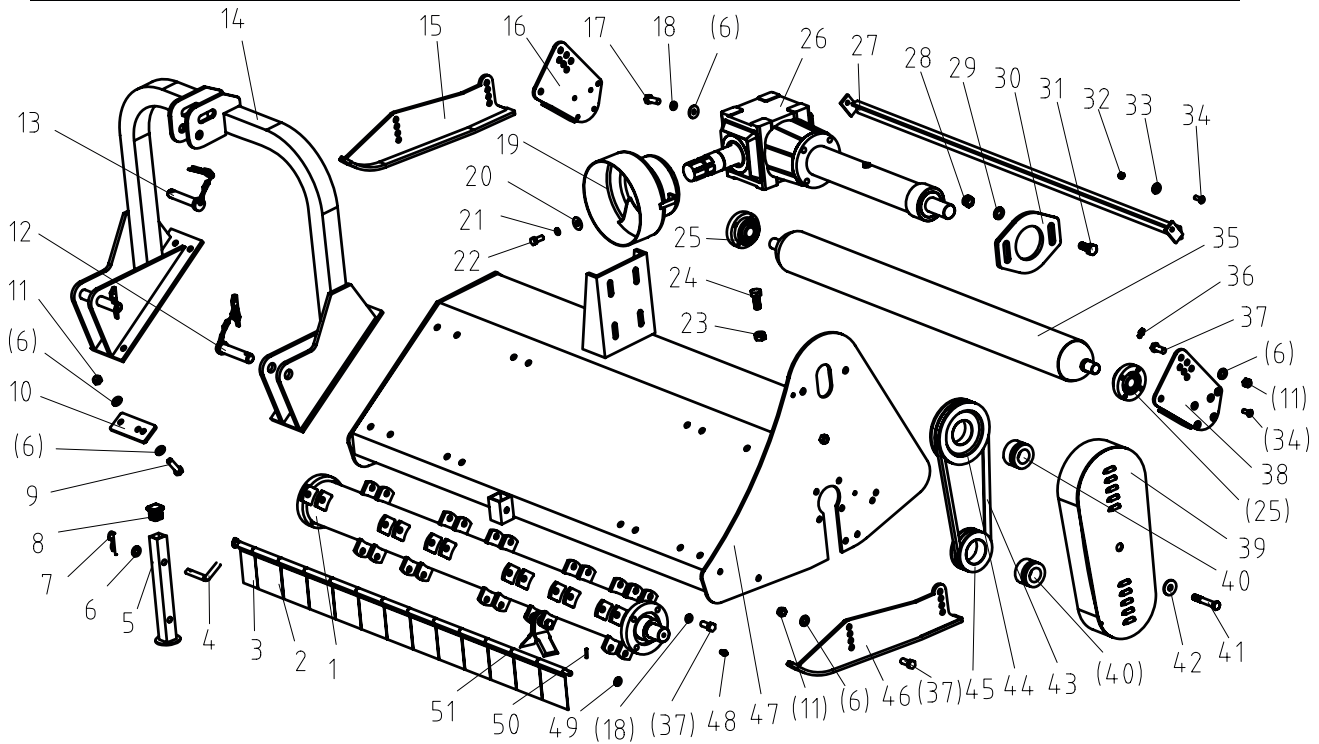
Don't remove the protective covers that protect the machine.

SERVICE AND MAINTENANCE

3.5 TROUBLE SHOOTING

FAILURE	CAUSE	SOLUTION	LEVEL OF DANGER
Excessive vibration of the machine.	Broken blades.	Replace broken blades.	Blades can be replaced by a competent operator . In the other cases, replacement must be done by specialised staff.
	Broken rotor support.	Replace rotor support with original parts.	
	Broken driving support shaft.	Replace shaft support with original parts.	
	Bent rotor	Replace rotor with original parts.	
The grass is not cut.	Broken blades.	Replace blades.	For replacement of flails, adjustment or replacement belts and fixing lock joints, see service and maintenance
	Belt slipping.	Adjust belt tension.	
	Broken belts.	Replace belts.	
	Pulleys slipping on shafts.	Fixing pulley lock joints.	
	Broken gear box.	Repairing or replacement of gear box.	

PARTS LIST



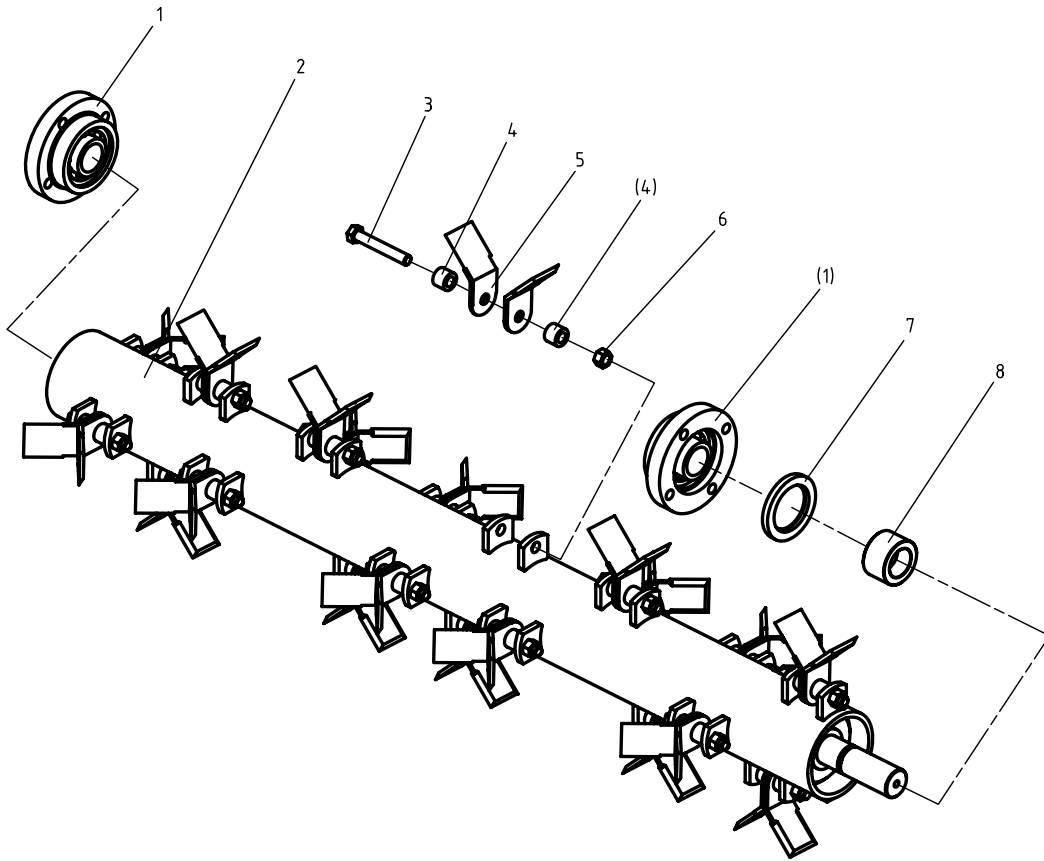
NO.	Part NO.	Name & Specifications	Quantity	Remark
1	EFGC125.018	Blade axle subassembly	1	
2	EF100.00.122	Fender	13	
3	EF100.00.121	Fender	1	
4	EF100.00.111	Bent Pin	1	
5	EF100.00.027	Support Frame	1	
6	GB97.1-85	Plain Washer 10	18	
7	EFGC125.110	"R" pin	1	
8	EF100.00.117	Cover	1	
9	GB5783-86	Bolt M12×40	8	
10	FMEH120.101	Splint	4	
11	GB6184-86	Locking nut M12	16	
12	RKN120.018	Pin shaft weldment	2	
13	EF100.00.019	Pin shaft weldment	1	
14	FMEH120.014	Hanging Weldment	1	
15	EFGC120.013	Base plate (L)	1	
16	EFG120.102	Support for roller (L)	1	
17	GB5783-86	Bolt M12×35	4	
18	GB93-87	Spring washer 12	12	
19	EF100.00.112	Guard shade	1	
20	GB96-85	Plain washer 10	4	
21	GB93-87	Spring washer 10	4	
22	GB5783-86	Bolt M10X25	4	
23	GB6173-86	Nut M16x1.5	1	
24	GB5786-86	Bolt M16X1.5X50	1	
25	EF100.00.012	Bearing with flange UC205	2	

PARTS LIST

NO.	Part NO.	Name & Specifications	Quantity	Remark
26	EFGC120.015	Gear box assembly	1	
27	EF100.00.024	Mud shield	1	
28	GB6184-86	Locking nut M14	2	
29	GB97.1-85	Plain washer 14	2	
30	EFGC120.102	Tension plate	1	
31	GB5783-86	Bolt M14X35	2	
32	GB6184-86	Locking nut M8	2	
33	GB97.1-85	Plain washer 14	2	
34	GB2673-86	Hex.head bolt M8X25	10	
35	EFG120.012	Roller weldment	1	
36	GB1152-89	Grease zerk M6	2	
37	GB5783-86	Bolt M12X30	16	
38	EFG120.101	Support for roller (R)	1	
39	EFGC120.016	Belt cover	1	
40	JB/T7934Z3	Swellable sleeve	2	
41	GB5782-86	Bolt M12×80	1	
42	GB96-85	Plain washer 12	5	
43	GB-T1154-97	Belt B991	2	
44	EFG120.106	Big belt ptlley	1	
45	EFG120.105	Small belt ptlley	1	
46	EFGC120.014	Base plate (R)	1	
47	FMEH120.011	The cover weldment	1	
48	GB1152-89	Grease zerk M8X1	2	
49	GB97.1-85	Plain washer 10	18	
50	GB879-86	Elastic cylindrical pin 4x22	2	
51	EF100.00.123	Shaft for fender	1	

PARTS LIST

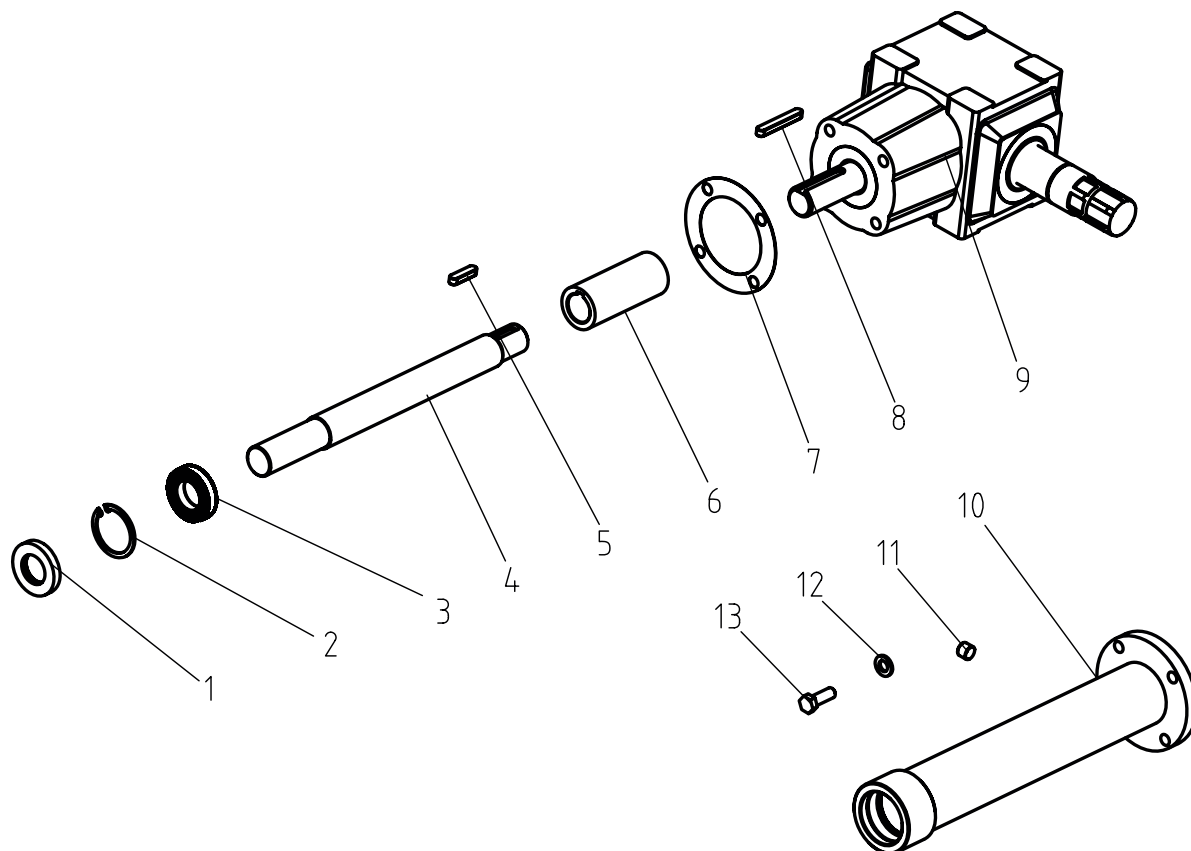
FME PARTS LIST



NO.	Part NO.	Name & Specifications	Quantity	Remark
1	UC207-Z	Bearing with flange 90207	2	
2	EFG120.013	Blade axle weldment	1	
3	GB5782-86	Bolt M12x80	20	
4	EF100.00.101	Sleeve	40	
5	EF100.00.102	Blade	40	
6	GB6184-86	Locking nut M12	20	
7	GB13871-94	Oil seal FB55X80X8	1	
8	RK120.109	Oil-seal sleeve	1	

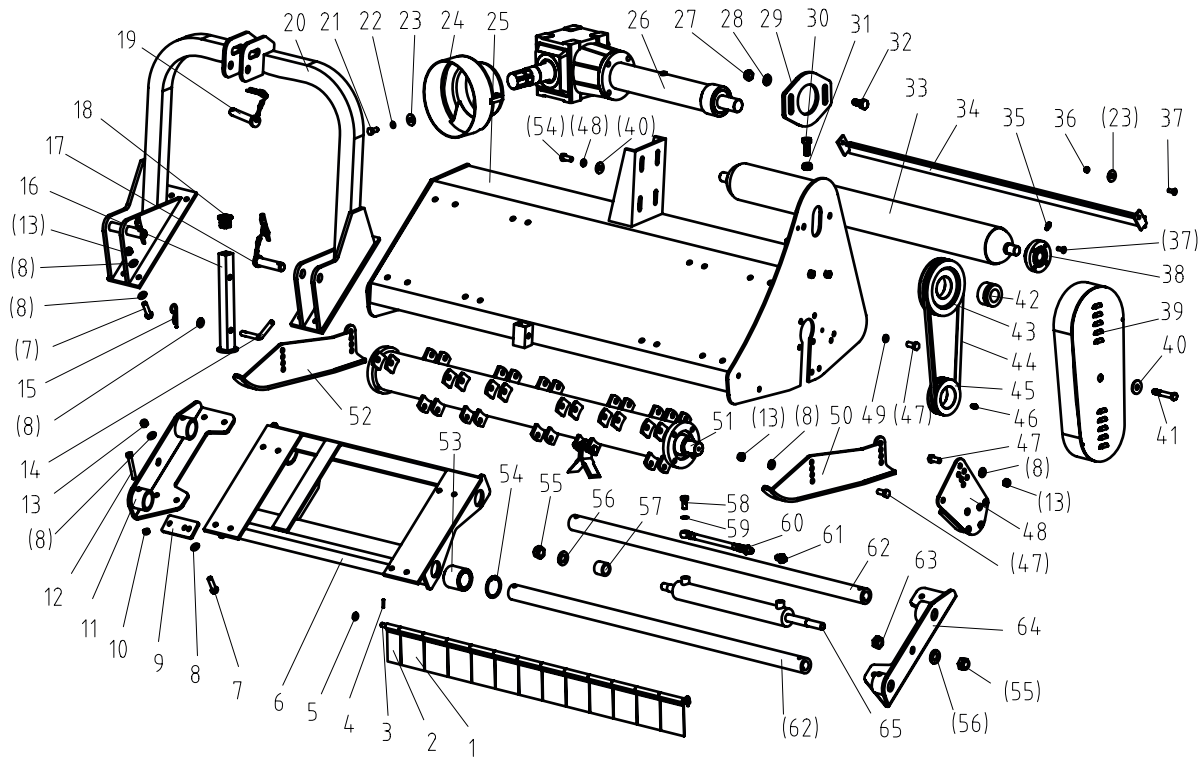
PARTS LIST

FME PARTS LIST



No.	Part No	Name & Specification	Quantity	Remarks
1	GB13871-94	Oil seal 35×62×10	1	
2	GB893.1-86	Circlip 62	1	
3	GB/T276-94	Bearing 6007	1	
4	EFGC120.133	Shaft	1	
5	GB1096-79	Key A10X40	1	
6	EFGC120.132	Connected sleeve	1	
7	EFGC120.131	Paper gasket	1	
8	GB1096-79	Key A10X70	1	
9	XH50.300Z.02	Gearbox assembly	1	
10	EFGC120.018	Shaft tube weldment	1	
11	ZBT 32001.3-87	Retainer	2	
12	GB93-87	Plain washer 12	4	
13	GB5783-86	Hex. head bolt M12X35	4	

FMEH PARTS LIST



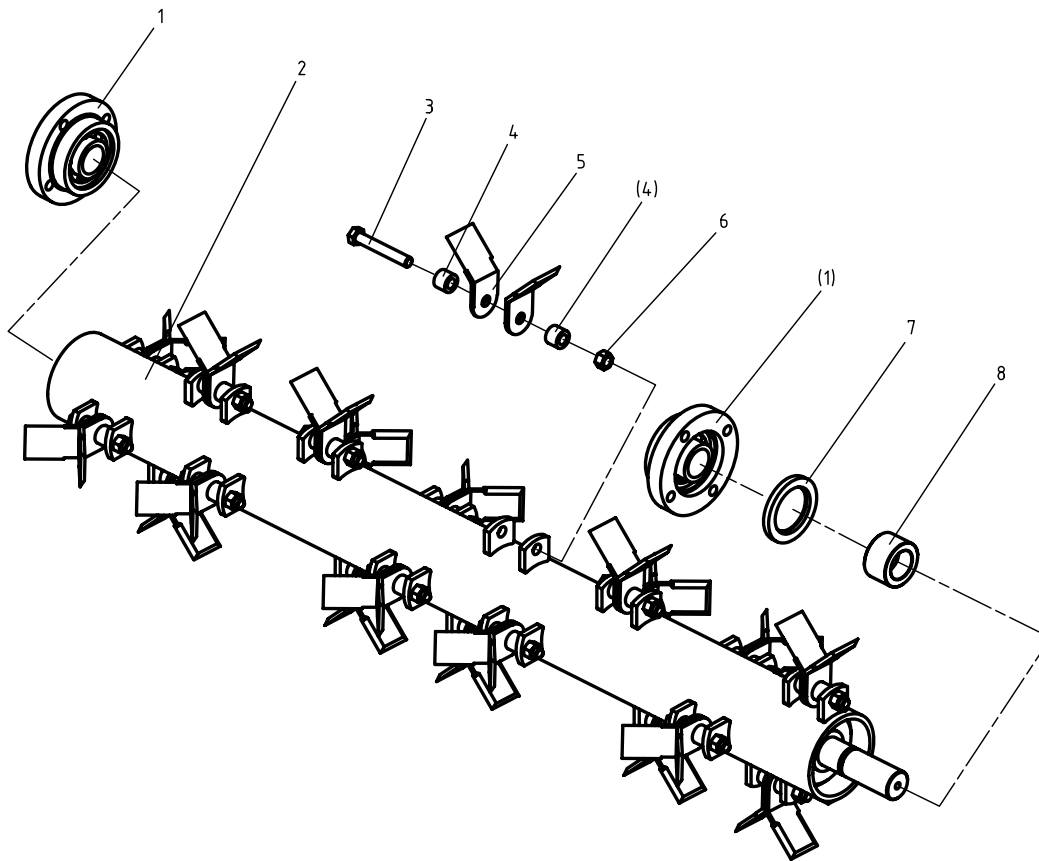
NO.	Part NO.	Name & Specifications	Quantity	Remark
1	EF100.00.122	Fender	13	
2	EF100.00.121	Half Fender	1	
3	EF100.00.123	Shaft for fender	1	
4	GB879-86	Elastic cylindrical pin 4x22	2	
5	GB97.1-85	Plain washer 10	18	
6	FMEH120.013	Slippage bracket	1	
7	GB5783-86	Bolt M12X40	14	
8	GB97.1-85	Plain washer 12	53	
9	FMEH120.101	Splint	4	
10	GB6184-86	Locking nut M10	4	
11	FMEH120.015	Connecting bracket (L)	1	
12	GB5783-86	Bolt M10X70	4	
13	GB6184-86	Locking nut M12	50	
14	EF100.00.111	Bent pin	1	
15	EFGC125.110	R pin	1	
16	EF100.00.027	Support frame	1	
17	RKN120.018	Pin Shaft weldment	2	
18	EF100.00.117	Cover	1	
19	EF100.00.019	Pin shaft weldment	1	
20	FMEH120.014	Hanging weldment	1	
21	GB5783-86	Bolt M10X25	4	
22	GB93-87	Spring washer 12	4	
23	GB96-85	Plain washer 10	4	
24	EF100.00.112	Guard shade	1	

PARTS LIST

NO.	Part NO.	Name & Specifications	Quantity	Remark
25	FMEH120.011	The cover weldment	1	
26	EFGC120.015	Gear box assembly	1	
27	GB6184-86	Locking nut M14	2	
28	GB97.1-85	Plain washer 14	2	
29	EFGC120.102	Tension plate	1	
30	GB5786-86	Bolt M16X1.5X50	1	
31	GB6173-86	Nut M16x1.5	1	
32	GB5783-86	Bolt M14X35	2	
33	EFG120.012	Roller weldment	1	
34	EF100.00.024	Mud shield	1	
35	GB1152-89	Grease zerk M6	2	
36	GB6184-86	Locking nut M8	2	
37	GB2673-86	Hex.head bolt M8X25	10	
38	EF100.00.012	Bearing with flange UC205	2	
39	EFGC120.016	Belt cover	1	
40	GB96-85	Plain washer 12	5	
41	GB5782-86	Bolt M12X80	21	
42	JB/T7934Z3	Swellable sleeve	2	
43	EFG120.106	Big belt ptley	1	
44	GB/T1154-97	Belt B991	2	
45	EFG120.105	Small belt ptley	1	
46	GB1152-89	Grease zerk M8X1	2	
47	GB5783-86	Bolt M12X30	16	
48	EFG120.101	Support for roller (R)	1	
	EFG120.102	Support for roller (L)	1	
49	GB93-87	Spring washer 12	12	
50	EFGC120.014	Base plate (R)	1	
51	EFGC125.018	Blade axle subassembly	1	
52	EFGC120.013	Base plate (L)	1	
53	EFGCH120.103	Nylon bush	4	
54	GB893.1-86	Circlip 60	4	
55	GB6184-86	Locking nut M18X1.5	2	
56	GB97.1-85	Plain washer 18	2	
57	EFGCH120.101	Sleeve	1	
58	GB3451-83	Bolt M12X1.25	2	
59	GB3451-86	Washer 12	4	
60	EFGCH120.011	Hydraulic hose	2	
61	EFGCH125.013	Quick connector R1/2"	2	
62	EFGCH120.104	Guide rail	2	
63	GB6173-86	Nut M18X1.5	1	
64	FMEH120.012	Connecting bracket (R)	1	
65	EFGCH120.012	Slippage cylinder	1	

PARTS LIST

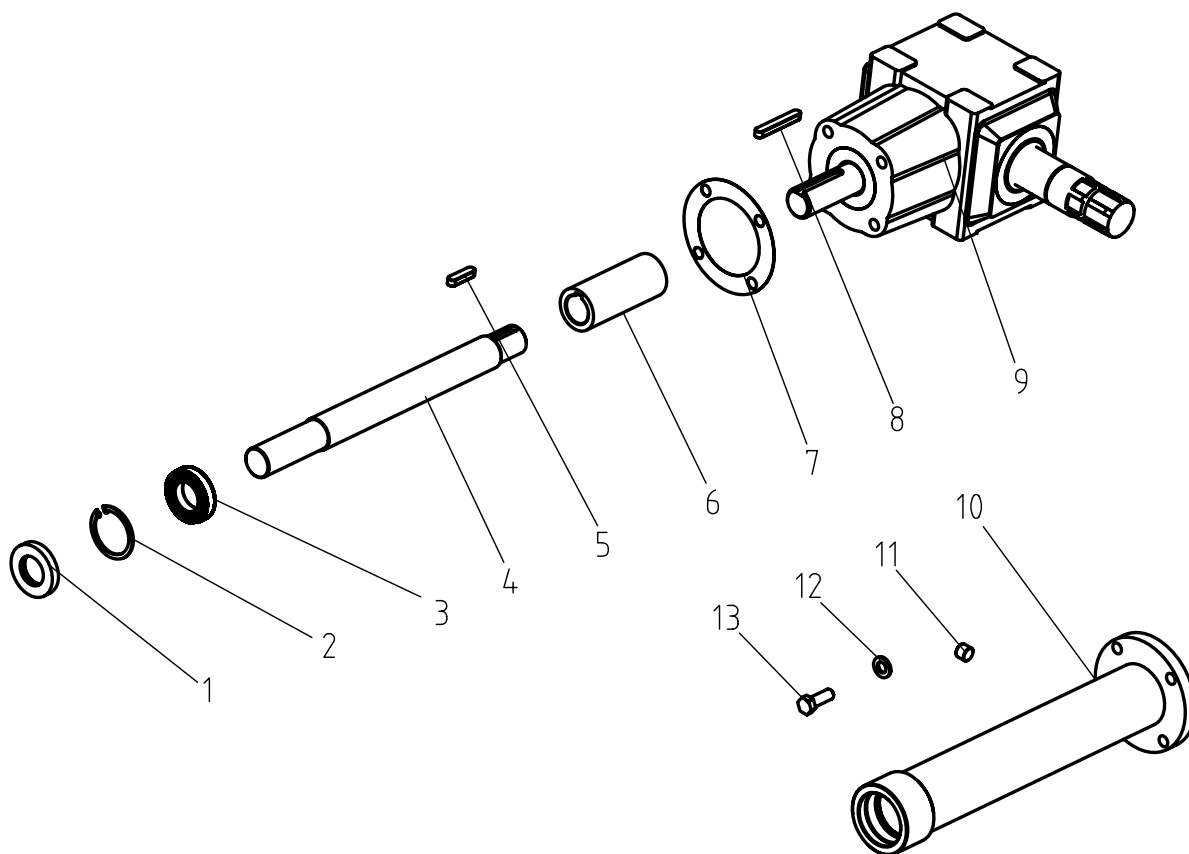
FMEH PARTS LIST



NO.	Part NO.	Name & Specifications	Quantity	Remark
1	UC207-Z	Bearing with flange 90207	2	
2	EFG120.013	Blade axle weldment	1	
3	GB5782-86	Bolt M12x80	20	
4	EF100.00.101	Sleeve	40	
5	EF100.00.102	Blade	40	
6	GB6184-86	Locking nut M12	20	
7	GB13871-94	Oil seal FB55X80X8	1	
8	RK120.109	Oil-seal sleeve	1	

PARTS LIST

FMEH PARTS LIST



No.	Part No	Name & Specification	Quantity	Remarks
1	GB13871-94	Oil seal 35×62×10	1	
2	GB893.1-86	Circlip 62	1	
3	GB/T276-94	Bearing 6007	1	
4	EFGC120.133	Shaft	1	
5	GB1096-79	Key A10X40	1	
6	EFGC120.132	Connected sleeve	1	
7	EFGC120.131	Paper gasket	1	
8	GB1096-79	Key A10X70	1	
9	XH50.300Z.02	Gearbox assembly	1	
10	EFGC120.018	Shaft tube weldment	1	
11	ZBT 32001.3-87	Retainer	2	
12	GB93-87	Plain washer 12	4	
13	GB5783-86	Hex. head bolt M12X35	4	



FHM
FARMER-HELPER
MACHINERY COMPANY

Parts Request Form

E-mail cservice@betstco.com

Name: _____

Address: _____

City State Zip: _____

Phone: _____

E-mail: _____

Model Number: _____

Serial Number: _____

Purchased From: _____

Purchase Date: _____

Item No.	Description	Qty	Price	Amount

Comments:

FARMER-HELPER Limited Warranty

Unless otherwise stated on purchase invoice, Betstco warrants to original Purchaser that Farmer-Helper products are free from major defects in material under normal use and service for a period of 90 Days from the date the product is purchased or shipped, whichever is later. Commercial use 90 days. Use at address that is not yours, is considered commercial use. Consumable, Expendable, Wear Items (Rubber plastic parts, hydraulic hoses, belts, tires, cables, blades, tines, wedges, teeth, tiups, chains, pins, brushes, filters, etc) and cracked hydraulic pumps, bent or broken cylinder rods are not covered under this warranty. Warranty does not cover items that have been modified, damaged by abuse or usage not in accordance with design or maintenance.

Betstco obligation under this warranty is to repair or replace defective upon approval by; Betstco, 83371 Melton Rd. N, Creswell OR 97426 that Warranty Claim is valid. Product shall be returned upon request of Betstco. Transportation charges to be prepaid by user.

Gasoline or diesel engines used to powered Farmer-Helper products are covered by the warranty of the appropriate engine manufacturean Purchaser must look to the engine manufacture for all issues relating to engine operation.

Betstco assumes no responsibility for outside labor.

PERMISSABLE BY APPLICABLE LAW, BETSTCO HEREBY DISCLAIMS ALL WARRANTIES OF ANY KIND, EITHER EXPRESS OR IMPLIED, INCLUDING, ANY IMPLIED WARRANTIES WITH RESPECT TO THE PRODUCT PURCHASED, WITHOUT LIMITING THE GENERALITY OF THE FOREGOING, BETSTCO HEREBY EXPRESSLY DISCLAIMS ALL LIABILITY FOR PRODUCT DEFECT OR FAILURE, CLAIMS THAT ARE DUE TO NORMAL WEAR, PRODUCT MISUSE, ABUSE, PRODUCT MODIFICATION, IMPROPER PRODUCT SELECTION, NON-COMPLIANCE WITH ANY CODES, OR MISAPPROPRIATION. BETSTCO MAKES NO WARRANTIES TO THOSE DEFINED AS "CONSUMERS" IN THE MAGNUSON-MOSS WARRANTY FEDERAL TRADE COMMISION IMPROVEMENTS ACT. THE FOREGOING EXCLUSION OF IMPLIED WARRANTIES DO NOT APPLY TO THE EXTENT PROHIBITED BY LAW. PLEASE REFER TO YOUR LOCAL LAWS FOR ANY SUCH PROHIBITIONS.

THERE SHALL BE NO LIABILITY FOR PRODUCT LIABILITY OR LIABILITY ON THE PART OF BETSTCO FOR ANY GENERAL SPECIAL OR CONSEQUENTIAL DAMAGES ARISING OUT OF THE SALE OR USE OF ANY PRODUCTS SOLD BY BETSTCO OR AN AGENT THEREOF, BETSTCO MAKES NO WARRANTIES, EXPRESS OR IMPLIED, (INCLUDING, BUT NOT LIMITED TO, ANY WARRANTY OF MERCHANTABILITY OR FITNESS OF THE PRODUCTS FOR ANY PURPOSE) WITH RESPECT TO THE PRODUCTS COVERED BY THIS AGREEMENT EXCEPT AS IN THIS PARAGRAPH OTHERWISE EXPRESSLY PROVIDED.

THIS IS THE SOLE AND ONLY WARRANTY OF VALUE-LEADER PRODUCTS, NO OTHER WARRANTY IS APPLICABLE, EITHE EXPRESSED OR IMPLIED, IN FACT BY LAW.

This warranty shall not be interpreted to render Betstco, or any authorized agent liable for injury or damages of any kind or nature, direct, consequential, or contingent, to a person or property.

The sole and only remedy in regard to any defective product shall be the repair or replacement thereof as herein provided, Betstco, agent(s) of Betstco shall not be liable for any consequential, special, incidental or punitive damages resulting from or caused by any such defects

Betstco reserves the rights to make improvements in design or changes in specifacations at any time, without incurring any obligations to owners of the units previously sold.

WARRANTY VOID IF REGISTRATION IS NOT RECEIVED OR RECORDED ONLINE WITHIN 30 DAYS OF PURCHASE DATE OR SHIP DATE, WHICHEVER IS LATER.

ITEM: _____ **MODEL#** _____ **PURCHASE DATE:** ____/____/____

PURCHASED FROM: _____ **GIFT INV# ORDER#** _____

OWNER NAME: _____ **SERIAL #** _____

OWNER ADDRESS: _____

CITY: _____ **COUNTY:** _____ **ST:** _____ **ZIP:** _____

PHONE: _____ **EMAIL:** _____

ACCEPTANCE OF RESPONSIBILITY:

I (PURCHASER) HAVE READ OPERATORS MANUAL AND LIMITED WARRANTY OR SOMEONE HAS READ/AND EXPLAINED ALL INSTRUCTIONS TO ME. I UNDERSTAND THIS WARRANTY DOES NOT COVER ANY LABOR AND THAT ALL DISPUTES WILL BE SETTLED BY BINDING ARBITRATION. BINDING ARBITRATION IS CONDUCTED BY THE BETTER BUSINESS BUREAU (BBB) LOCATED AT 4004 SW KRUSE WAY PLACE ST 375 LAKE OSWEGO OR 97035 OR THE CURRENT BBB LOCATION CLOSEST TO BETSTCO. I ACKNOWLEDGE MY LIMITED WARRANTY IS VOID IF ANY ATTEMPT TO REPAIR OR REPLACE DEFECTIVE PARTS HAS BEEN MADE BY UNAUTHORIZED PERSONNEL. I ACKNOWLEDGE RECEIPT OF MY OPERATORS MANUAL AND HAVE READ THE SAFE OPERATION SECTION. I ACKNOWLEDGE UNDERSTANDING MAINTENANCE AND SAFE OPERATION REQUIREMENTS, ITEM SPECIFICATIONS, OPERATION, CONTROLS AND STORAGE REQUIREMENTS. **I UNDERSTAND THAT IS ALONE AM RESPONSIBLE FOR PROPER MAINTENANCE, CARE AND SAFE OPERATION OF THIS FARMER-HELPER ITEM**

I (PURCHASER) AGREE THAT PERSONS NOT FAMILIAR WITH THE OPERATION OF THIS ITEM SHOULD NOT BE ALLOWED TO USE IT. CHILDREN ESPECIALLY SHOULD NOT OPERATE OR BE NEAR POWER PRODUCTS WHEN IN USE. ANYONE OPERATING VALUE-LEADER PRODUCTS SHOULD HAVE READ OPERATIONS MANUALS AND SAFETY MANUALS.

OWNERS SIGNATURE: x _____ **DATE:** ____/____/____

YOU MUST SIGN THIS WARRANTY AND MAIL OR FAX A COPY TO BETSTCO, 83371 MELTON RD, CRESWELL OR, 97426. IF YOU PREFER YOU MAY COMPLETE YOUR REGISTRATION ONLINE AT WWW.VALUE-LEADER.COM. THIS WARRANTY IS NOT EFFECTIVE UNLESS PURCHASER COMPLETE REGISTRATION AND WARRANTY FOR WITHIN 30 DAYS OF PURCHASE OR SHIP DATE WHICHEVER IS LATER.

NOTE: WE MAY REFUSE WARRANTY OF ANY KIND UNLESS BETSTCO, RECEIVES A COMPLETED, LEGIBLE AND SIGNED WARRANTY REGISTRATION. IT IS THE RESPONSIBILITY OF THE PURCHASER TO ASSURE THAT REGISTRATION DOCUMENT IS RECEIVED BY

**1 YEAR EXTENDED WARRANTY & REGISTRATION
FARMER-HELPER IMPLEMENTS
BRANDED PRODUCTS
1 YEAR EXTENDED WARRANTY**

1 Year Extended Warranty amends to original Recorded Warranty Registration the time period of described coverage. Extended Warranty does not apply to consumable and Expendable Item as described in Product Warranty Registration.

This amendment does not affect any other part of recorded Warranty Registration or policy.

No one is authorized to alter, modify, or enlarge this Amendment to original recorded Warranty Registration

**EXTENDED REGISTRATION & PAYMENT MUST BE RECEIVED
WITHIN 30 DAYS OF PURCHASE DATE**

EXTENDED WARRANTY REGISTRATION

PRODUCT & MODEL # _____

SERIAL # _____

OWNER NAME : _____

BETSTCO INVOICE # _____

ACCEPTANCE OF RESPONSIBILITY:

I (PURCHASER) HAVE READ AND UNDERSTAND THE EXTENDED WARRANTY OR SOMEONE HAS READ AND EXPLAINED ALL THE ABOVE TO ME. I UNDERSTAND THIS EXTENDED WARRANTY DOES NOT COVER ANY LABOR. I HAVE FILED MY ORIGINAL WARRANTY REGISTRATION AND FULLY UNDERSTAND MY REQUIREMENTS. ***I UNDERSTAND THAT I ALONE AM RESPONSIBLE FOR PROPER MAINTENANCE, CARE AND SAFE OPERATION OF THIS TRACTOR IMPLEMENT.***

OWNERS SIGNATURE: x _____

DATE: ____/____/____

FAX TO 1-541-895-2756

YOU MUST SIGN THIS WARRANTY AND MAIL OR FAX A COPY TO BETSTCO, 83371 MELTON RD, CRESWELL OR. IF YOU PREFER YOU MAY COMPLETE YOUR REGISTRATION ONLINE AT WWW.VALUE-LEADER.COM. THIS WARRANTY IS NOT EFFECTIVE UNLESS PURCHASER COMPLETE REGISTRATION AND WARRANTY FOR WITHIN 30 DAYS OF PURCHASE OR SHIP DATE WHICHEVER IS LATER.

NOTE: WE MAY REFUSE WARRANTY OF ANY KIND UNLESS BETSTCO, RECEIVES A COMPLETED, LEGIBLE AND SIGNED WARRANTY REGISTRATION. IT IS THE RESPONSIBILITY OF THE PURCHASER TO ASSURE THAT REGISTRATION DOCUMENT IS RECIEVED BY BETSTCO.