

BCR SERIES

Value Leader

est.1995



OPERATION & PARTS MANUAL

Please read these instructions before using. Always grease all fittings and be sure to always check and fill with oil before operating! Retain this manual for future use.

BETSTCO

www.Betstco.com

541-895-3083 M-F 7am-4pm PST

RUGGED LABOR SAVING EQUIPMENT SINCE 1995 83371 Melton Rd, Creswell OR 97426

Value Leader



Specifications subject to change without notice

General Safety Information

Ensure all potential operators read this manual thoroughly before using the machine

Safety: Ensure tractor and machine is stopped & keys out of ignition before set-up/maintenance

Safety: Failure to follow good safety standards could result in severe injury or even death

Misuse: This machine is designed for use with compact tractors, and should be used only for the indicated purpose. We does not take responsibility if the machine is used for any otne purpose. Children must not operate the machine under any circumstance.

Modification: Do not modify equipment in anv way. This may impair the operation and overall safety of the machine.

Tractor requirements: Use only with compact tractors within power range specified.

Misuse transport: Do not use machinery to transport personnel or livestock.

Condition: For the safety of personnel and optimum performance of the machine, you should check the condition of the machine and the tractor before starting. Before use check all nuts and bolts are tight.

Spatial awareness: Always check the operating area is safe before starting machinery.

Operator clothing: The operator should not wear loose clothing while operating machinery.

Safety wear: Always use appropriate ear protection when running a tractor and machinery
Ensure you are wearing protective gloves when servicing and using machinery.

Bystander safety: Ensure bystanders keep away from the machine when it is in use. Do not touch moving parts when the machine is at work.

Public places: When traveling on the road/public places, always keep the PTO turned off

Maintenance: Always keep the machine maintained and in a good state. Where necessary repair or replace any defective parts. Do not modify the machine.

Sharp objects: Pay attention to the sharp/pointed parts while servicing the machine.

Safety guards: All protective parts should be in good condition before operating machinery.

Safety signs/stickers: Keep all safety signs clean and legible. Replace anywhich are missing or illegible. If a component with safety sign/(s) is replaced, make sure new safety sign/(s) are attached in the same locations.

Operating speeds: Machinery and PTO should be operated at the recommended speed at all times.

Safety awareness: Good safety requires that you familiarise yourself with various safety signs, the type of warning and the area, or particular function related to that area.

Alertness: Never consume alcohol or drugs these can hinder alertness/coordination. Consult your doctor about using this machine while taking prescription medications.

Machinery Pre-Use Checks

On receipt of your new machine and again within the first 4 hours of use, or the 'shake in' period as we like to call it, we always recommend checking over the machine.

- Check all bolts, Nuts and Screws are tight on the unit.
- Tighten/Check any bolts and nuts securing blades.
- If your machine has belts, check the tension and adjust if required.
- Apply grease to grease points if necessary.
- Check gear oil level. Do not overfill

Tractor Pre-Use Checks

- Check that the machine is properly attached to the tractor. Ensure that secure pins are used on the linkage mounting pins.
- Be sure to add extra weights to the front of the tractor or add wheel weights if required.
- Check that the tractor PTO shaft turns freely and that the machine's PTO drive shaft can extend easily. Grease the PTO drive shaft using the grease points.
- The chain on the PTO shaft should be checked and in a good condition. The universal joints installed should be in a good state with proper protective parts.
- Before installing the PTO shaft, the tractor and machine should be stopped and remove the key.
- Install and secure all safety guards, doors and covers before starting
- Bystanders should leave the immediate area before connecting the drive from the tractor.

Running/Operating Checks

- Always keep the PTO output from the tractor at 540 RPM when running machinery.

Post-Use Regular Checks

- Check blades, belts and wearing parts. Be sure they are not damaged and blades swing freely in their mount. Repair or replace as required.
- Clean machinery and check for/clear any entangled material which may have got stuck around any rotating parts.

Contents

General Safety Information	1-2
1. Dimensions and Specifications	3
2. Installation & Set Up	4
3. Operation Advice	5
4. Cutting Height Adjustment	6
5. Adjusting Belt Tension	7-8
6. Gear Oil Change & Check	9
7. Servicing & Maintenance	10
8. Parts Diagram & List	11-17
9. PTO Shaft Resizing	18
10. Trouble Shooting	19
11. Parts List	20
12. Warranty Info	21-23

Specifications	BCR-140	BCR-160	BCR-180
Suited to Engine HP	40-70 HP Tractors	50-75 HP Tractors	50-75 HP Tractors
3-Point Linkage	Cat. 1 & 2	Cat. 1 & 2	Cat. 1 & 2
Length	5'11"	6'3"	6'7"
Width	7'8"	7'8"	7'8"
Height	3'4"	3'4"	3'4"
Weight	1100lbs	1300lbs	1500lbs
Gearbox	50hp	50hp	50hp
Working Width	4'6"	5'2"	5'10"
PTO	540rpm	540rpm	540rpm

2. Installation & Set Up

Safety: Ensure tractor and machine is stopped and the key is out of the ignition before set up/maintenance.

Safety: Make sure the PTO drive isn't connected at any point until instructed to do so.

Attaching The Mower

Start by finding a flat piece of ground. Lower the three point linkage on your tractor to its lowest position and attach the mower to the tractor using the three point linkage pins and linch pins.

Attach the hydraulic connections [see section on hydraulic fitting & operation]. Then, with the rear roller on the mower on the ground, adjust the length of the top link arm and use the tractor hydraulics to ensure the skids at the side of the flail mower are parallel with the ground when horizontal.

By hand, rotate the blade rotor so that a row of blades hang vertically towards the ground to give an idea of the cutting height. Check the clearance between the bottom of the blades and the ground, this should be at least 2 inches.

The cutting height can be set for longer grass by simply raising the hydraulic lift arms on your tractor or/and by adjusting the rear roller and skids on the machine to increase or decrease the blade clearance as required [see section on adjusting the cutting height].

The working speed of the machine should always be at a walking pace, depending on the working conditions. Overgrown grass and weeds should be cut at a much slower pace for the best cut and to avoid any damage to the mower.

Check your PTO's shaft's grease points and apply grease if needed. Then attach the PTO shaft and ensure the locking pin is secured on both the tractor and mower. Attach the chain to a secure point on the tractor/implement

Pre-Mowing Checklist

Before starting the machine, always check and adjust the following:

- Hydraulics and fitted and operated correctly
- Set correct cutting height
- Tension of the belt drive
- Oil Level of the gearbox
- Lubrication/Grease Points
- Tighten all bolts, nuts and screws.
- All protective guards are in place and storage stands are removed.

3. Operating Advice

Safety: Ensure tractor and machine is stopped and the key is out of the ignition before set up/maintenance.

Safety: Before attaching/detaching machinery ensure the hydraulic lift system is in a neutral position

Hydraulic Fitting & Operation

Always check your tractor's operating manual for the recommended type of hydraulic fluid for your specific tractor. This should also give an idea of the tractor's reservoir capacity and how to check the level of fluid. Always check your tractor's hydraulic reservoir is topped up before using any hydraulically operated machinery. Your tractor will fill the pipes and RAM's with the hydraulic fluid on first use. So it is always best to check the hydraulic fluid reservoir after your first connection as well.

Start by setting the hydraulic lever on your tractor in to a position to release the hydraulic pressure. Connect the hydraulic hoses from the machine to the tractor using the quick release couplings. Start your tractor and activate the hydraulics to test the connection. Check to see if there is any leaks from the tractor or the implement.

Never suddenly change the direction of hydraulic flow/the direction of the machine as this may cause excess pressure and damage to the machine/tractor.

Before disconnecting always stop the engine and move the hydraulic control levers backwards and forwards to release any pressure

One pair of hoses operate the tilt function on the cutting head. The second pair operate the offset reach of the cutting head. It is key to get to grips with both before any cutting is started.

Tilt Adjustment

The mower heads can be moved up to a vertical for cutting low hedgerows (+90 degrees), set horizontally for general paddock mowing (0 or moved downwards to -50degrees). These measurements are for indication and may require a degree of adjustment on the tractor's lower linkage arms to achieve.

4. Cutting Height Adjustment

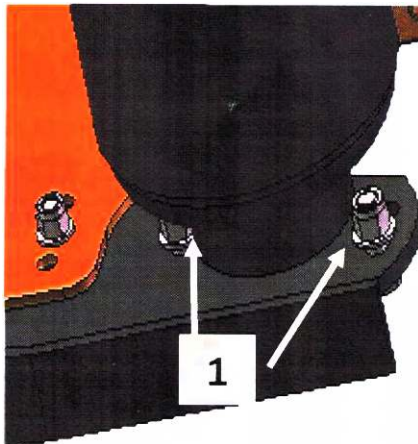
Safety: Ensure tractor and machine is stopped and the key is out of the ignition before set up/maintenance.

Note: Clearance of blades to the ground should be at least 2 inches and higher on uneven ground

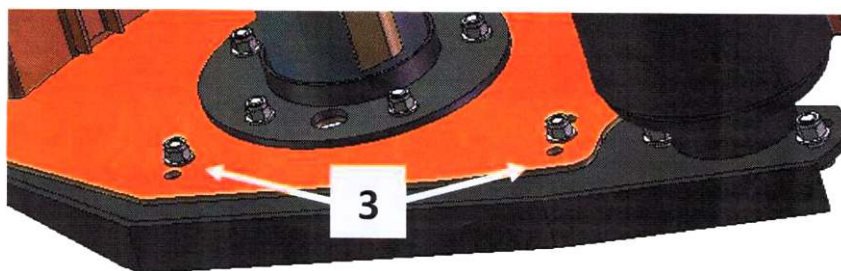
Getting the cutting height right is the key to creating the best cut and finish when mowing. This needs to be adjusted to the way of the land and also the length of the grass and density of the weeds.

The cutting height can be set for longer grass by simply raising the hydraulic lift arms on your tractor or/ and by adjusting the rear roller and the skids on the machine.

Roller Adjustment



1. Remove bolt/bolts 1 on both sides of machine to adjust to desired height.
2. Adjust roller by aligning the selected holes in the roller support holes at position 2 (using the hole closest to the ground gives the highest working height).
3. Put bolt 1 into selected hole/holes 2 and re-tighten bolt/bolts 1.



1. Remove the nuts and bolts 3 on the skids front & back of both sides of the machine
2. Move the skids up or down to the desired height with the set holes on the skids
3. Re-fit nuts and bolts 3.

5. Adjusting Belt Tension

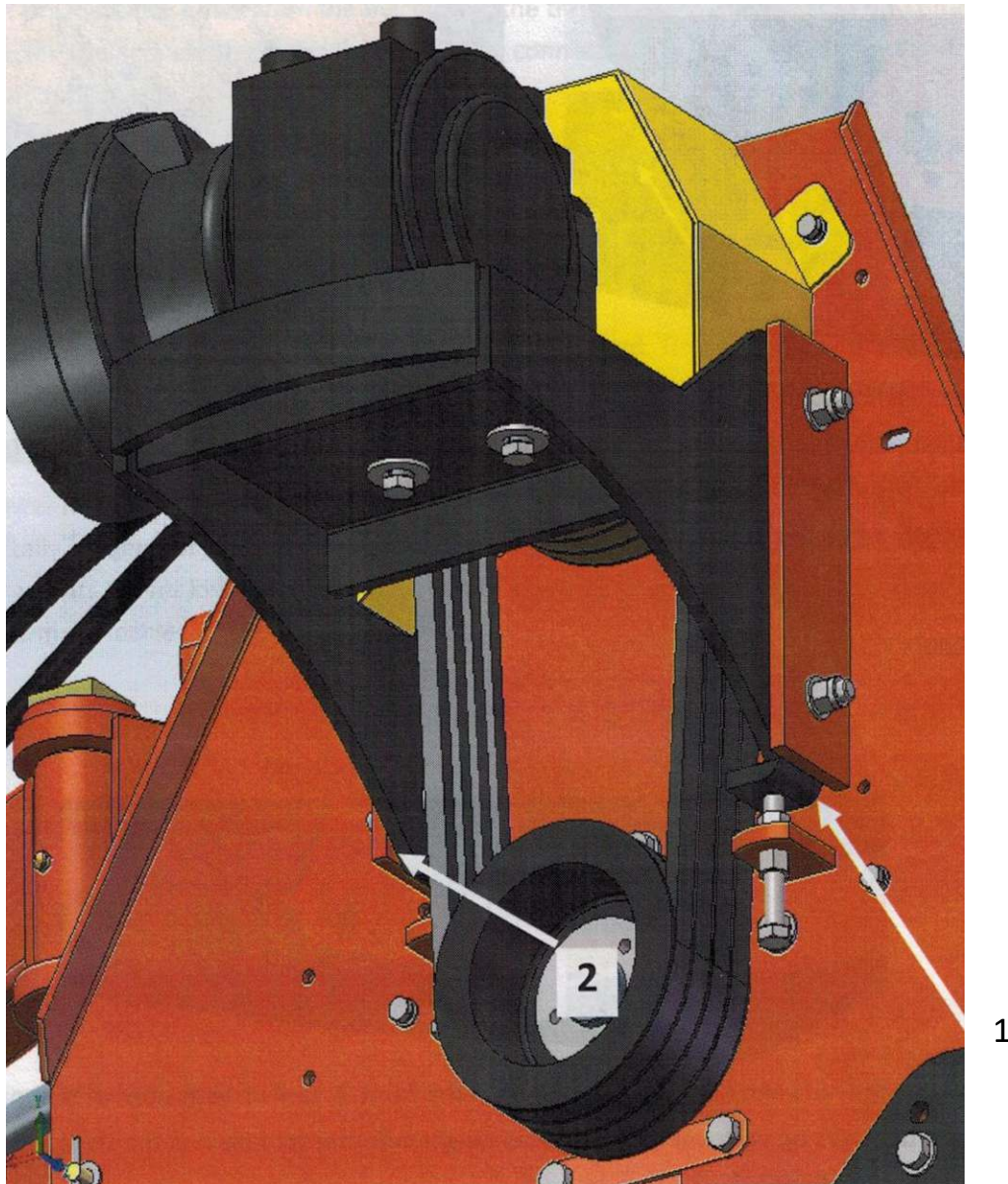
Safety: Ensure tractor and machine is stopped and the key is out of the ignition before set up/maintenance.

Correct Belt Tension

The correct belt tension is achieved when the belt can be deflected by the belt thickness about $\frac{3}{8}$ at the centre point between the pulleys. Tension should be checked regularly.

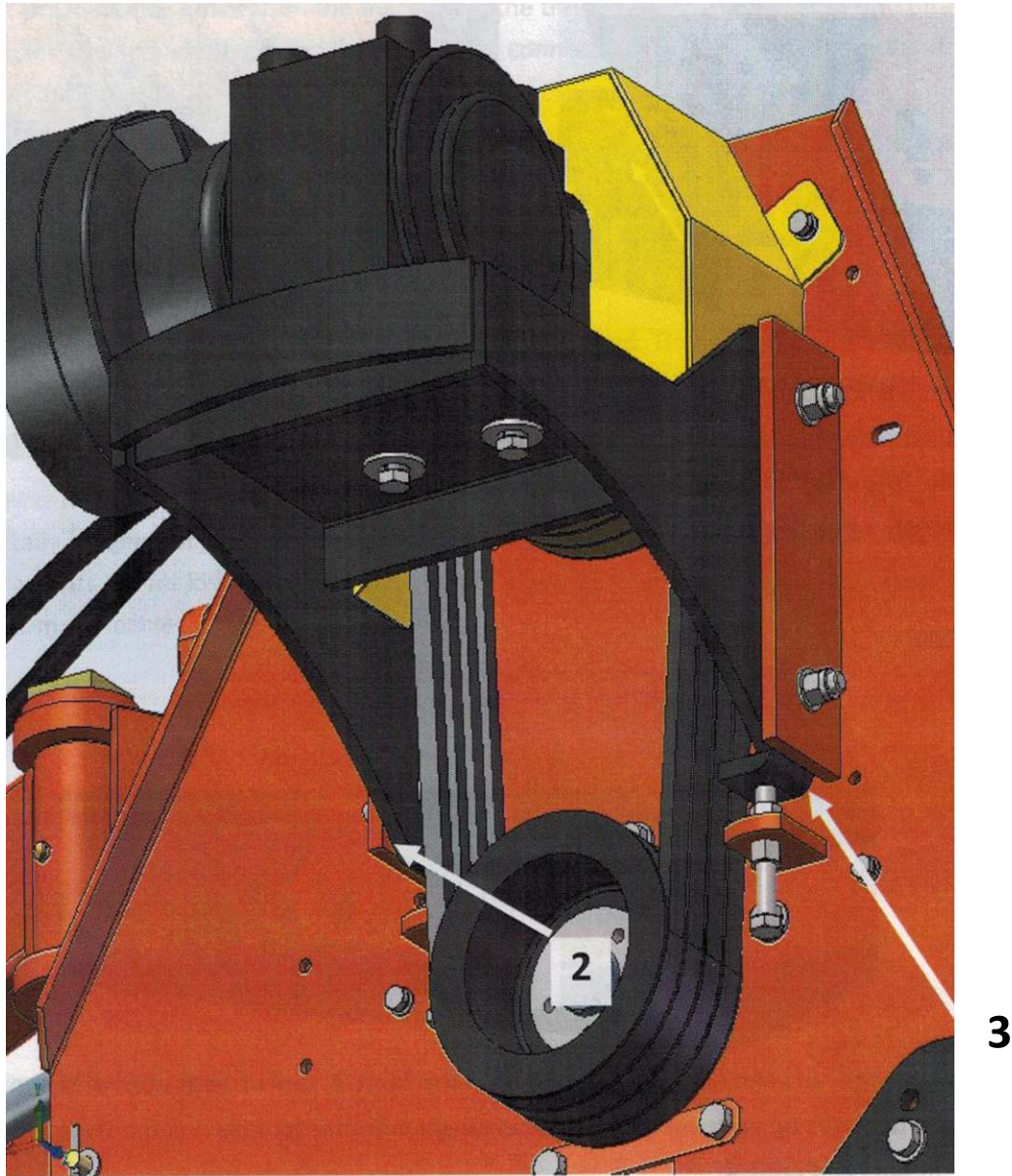
A generic measure across machines is the belt should be able to twist a quarter turn by hand, any more and they are too loose and any less are too tight. You may run the risk of losing drive to the mower or burning the belts prematurely

Belt Tension



5. Adjusting Belt Tension

Safety: Ensure tractor and machine is stopped and the key is out of the ignition before set up/maintenance.



1. Remove the belt cover.
2. Loosen four bolts securing the gear box to the mounting plate.
3. Loosen bolts behind the belt cover holding the support shaft.
4. Loosen off the counter locking nuts 3.
5. Adjust belt tension by adjusting the height of the counter nuts 3.
6. Align the gearbox ensuring the drive shaft is parallel with the body and re-tighten nuts.
7. Re-tighten all bolts.
8. Replace the belt cover.

6. Gear Oil Change and Check

Safety: Ensure tractor and machine is stopped and the key is out of the ignition before set up/maintenance.

Always check oil when the machine has cooled down and on a level surface. Make sure bolts are tightened correctly. The filler/level plug should be secure but not over tightened.

Important Information

Gear Oil Grade	80w90 Gear Oil for All Conditions
Gearbox Oil Level	Apprx. 0.5 Litres to Half Full
Level/Drain Plug Size	8mm Allen Key
First Oil Change	50 Hours Use
Oil Change Frequency	250 Hours/Yearly

6. Servicing and Maintenance

Safety: Ensure tractor and machine is stopped and the key is out of the ignition before set up/maintenance.

Grease Type	Multi-Purpose Lithium Based Grease
Grease Frequency	Check Every 4-8 Hours (Top off if Need)

Greasing & Lubrication Points

1. Bearings on the blade rotor x2
2. Bearings on the rear roller x2
3. PTO shaft x2
4. Body arm x4
5. Hydraulic ram x2

Wipe grease nipples with a clean cloth before greasing to avoid injecting any dirt and grit. Press grease into each nipple three to five times. We recommend using a hand-held grease gun for best results.

If the grease nipples will not take grease, remove and clean thoroughly. Also clean lubricant passageway. If you notice any grease points are broken, replace or repair them immediately.

Other Maintenance

Blades: Check condition of the blades and replace if worn or broken. Always be aware while handling blades, wear gloves and use suitable tools for changing blades.

Belts: Check condition of belts, if worn or frayed, replace. Adjust tension if needed.

Oils: Ensure oil levels are checked and topped up when needed. Replace any oils per schedule.

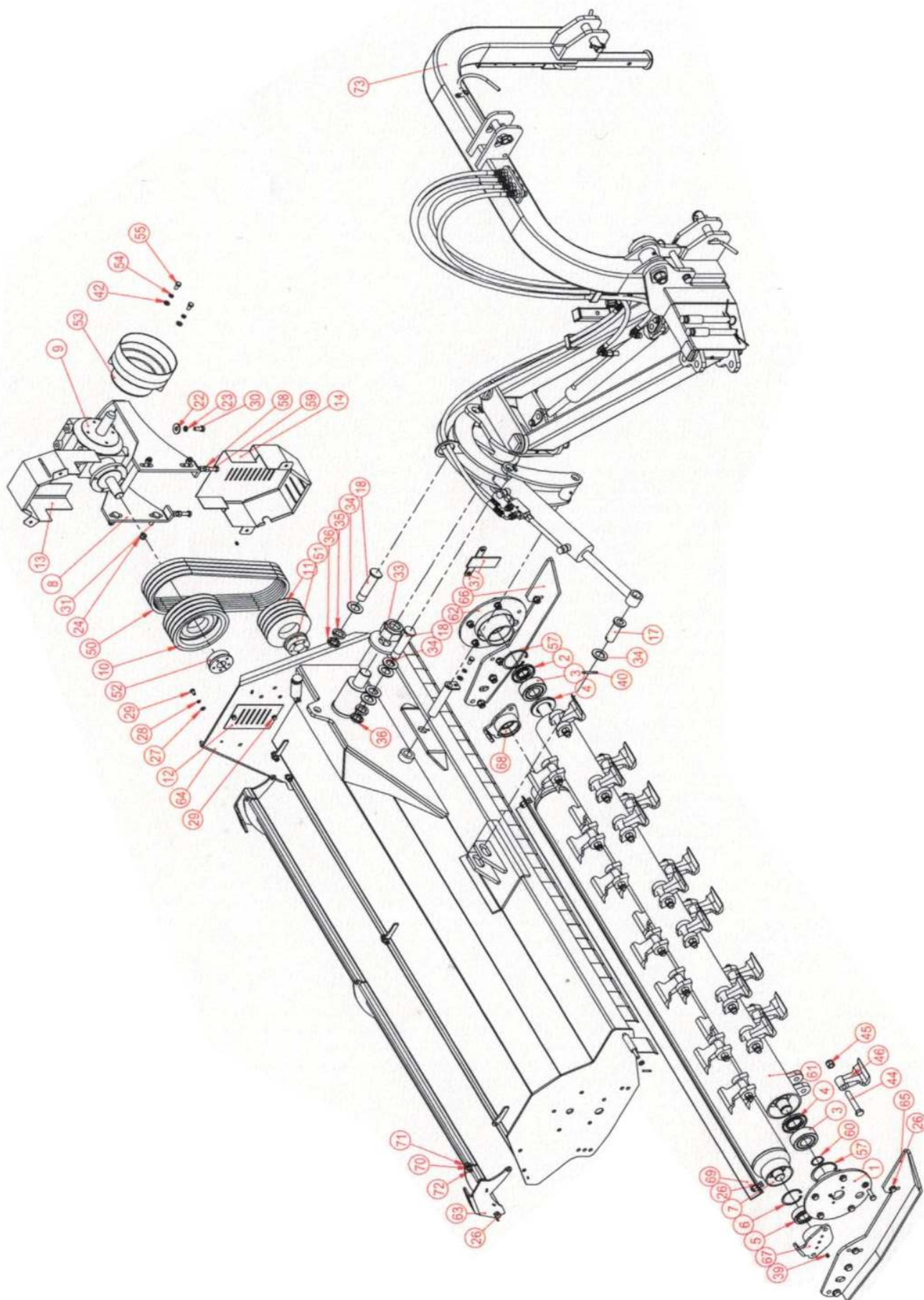
PTO Shaft: Check the condition of your PTO shaft and replace if worn or damaged immediately.

Cleaning: Ensure the mower deck and blades are cleaned of mud and grass. Remove debris from moving parts. DO NOT spray bearings when cleaning with a high pressure washer.

Bearings: Check the bearings on the blade roller and the rear roller. If the oil seals are damaged, debris may enter the bearings. Clean or replace if necessary. Run the mower without a load for 3-5 minutes to check bearings are operating smoothly.

Paintwork: Re-coat any damaged paintwork to prevent corrosion.

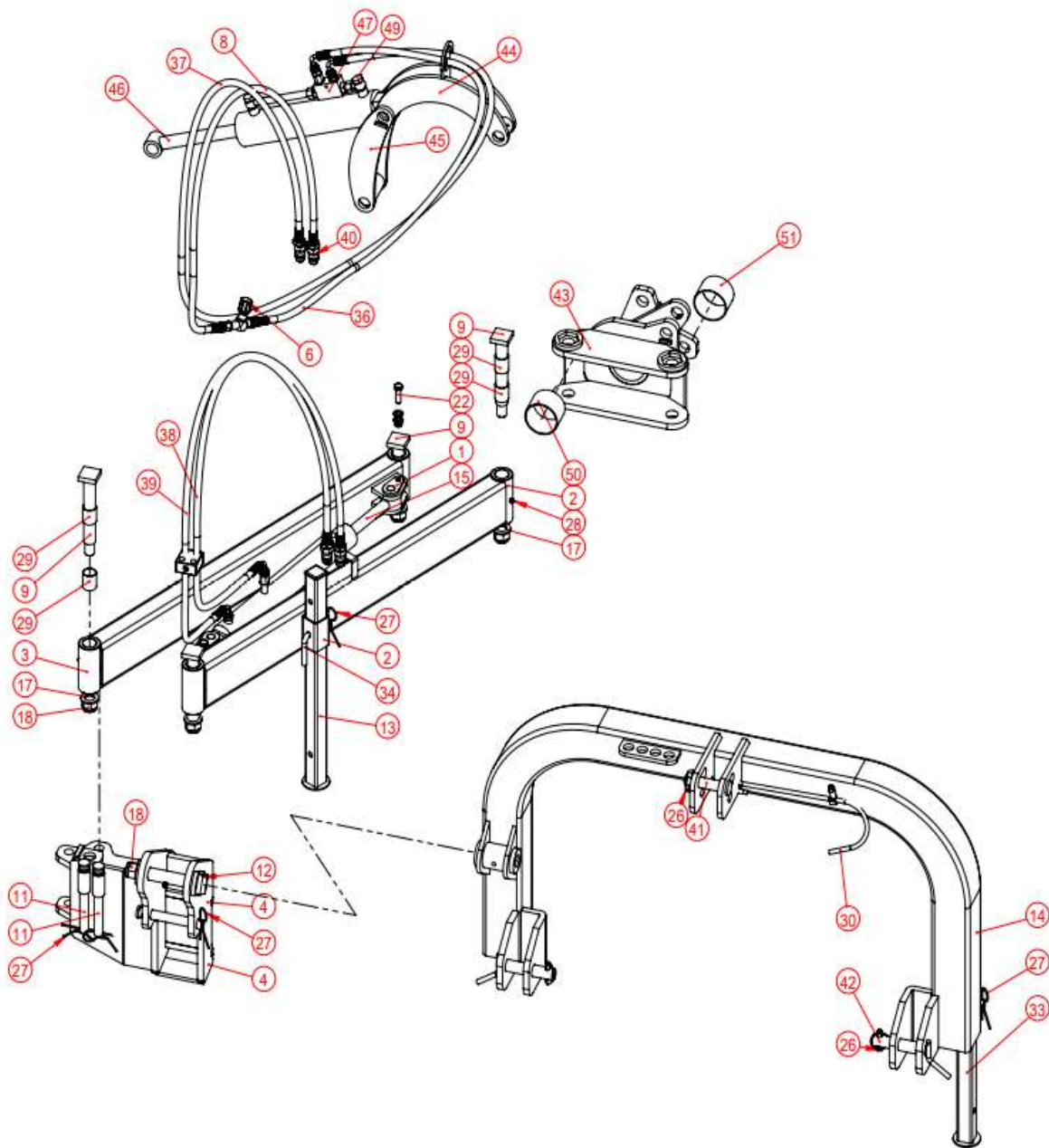
Skids: Check the condition of the skids and replace if worn.



NO.	PART #	NAME & SPECIFACATION	QTY.	REMARK
1	BCRI200.032	Bearing Block (right)	1	
2	TC40X85X10	Oil Seal	1	
3	GB T 281-94	Self-aligning Bearing 2308	2	
4	TC50X90X10	Oil Seal	2	
5	GBT.281-94	Self-aligning Beraing 2207	2	
6	GB 893. 1-86	Circlip for hole 72	2	
7	BCRI200.016	Roller	1	
8	BCRI200.020	Bracket for Gearbox	1	
9	XH50.003Z. 03W	Gearbox	1	
10	BCS170.105	Driving Pulley	1	
11	BCCS170.106	Driven Pulley	1	
12	BCRI200.107	Plate	1	
13	BCRI200.021	Belt Cover up	1	
14	BCRI200.022	Belt Cover down	1	
15	BCRI200.023	Round Pin	1	
16	BCRI200.024	Pin 1	1	
17	BCRI200.025	Pin 2	1	
18	BCRI200.119	Lifting Pin	2	
19	LG180.104	Up Linkage Pin	1	
20	GB97.1-85/12	Plain Washer 12	34	
21	GB97.1-85/14	Plain Washer 14	10	
22	GBT96.2-2002	Plain Washer 12x3	4	
23	GB93-12	Spring Washer 12	4	
24	GB6170-86-12LN	Lock Nut M12	20	
25	GB6184-86/14	Lock Nut M14	6	
26	GB5783-M12X35	Bolt M12x35	18	
27	GB/T95-2002	Plain Washer	6	
28	GB93-8	Spring Washer 8	5	

NO.	PART #	NAME & SPECIFACATION	QTY.	REMARK
29	GB5783-86/8X16	Bolt M8x16	6	
30	GB5783-M12X30	Bolt M12x30	4	
31	GBT.794-93	Step Bolt M12x45	4	
32	BCRI200.104	Lifting Flap	1	
33	GB6184-86	Lock Nut M42	1	
34	GB/T95-2002	Plain Washer 30	6	
35	GB5783-86/8X16	Spring Washer 30	2	
36	GB810-88/30X1.5	Round Nut M30	2	
37	BCRI200.026	T PLate	1	
38	011	Lock Pin	1	
39	M10X1	Grease Zerk	3	
40	GB/T91-2000	Cotter 5x50	1	
41	GB/T91-2000	Cotter 3.2x25	2	
42	GB/T97.1-2002	Plain Washer 10x2	8	
43	M8X1	Grease Zerk	1	
44	GB/M16X85	Bolt M16x85	28	
45	GB889.1-M16	Lock Nut M16	28	
46	H.3 1/8	Hammer Blade	Qty's Below	
47	EF175-108	Flap	23	
48	EF175-108A	Flap	4	
49	EF175-109	Flap	1	
50	BX1295.4	Belt	4	
51	26-40.80	Power Lock	4	
52	26-33.80	Power Lock	20	
53	EF175-123	Dust Cover	6	
54	GB/T93-1987-10	Spring Washer 10	3	
55	GB/T5783/10X20	Bolt M10x20	3	
56	GB5783-M14X40	Bolt M14x40	4	

NO.	PART #	NAME & SPECIFACATION	QTY.	REMARK
57	GB893. 1-86/90	Circlip for hole 90	4	
58	GB6170-M12	Nut M12	4	
59	GB5783-86/12X80	Bolt M12x80	2	
60	GB 894.1-86	Circlip for hole 40	1	
61	BCRI200.030	Blade Axel	1	
62	BCRI200.031	Bearing Block left	1	
63	BCRI200.060	Opening Rear Deck	1	
64	BCRI200.015A	Deck Weldment	1	
65	BCRI200.018	Adjustment Plate R	1	
66	BCRI200.019	Adjustment Plate L	1	
67	BCRI200.017	Roller Bearing Block L	1	
68	BCRI200.018	Roller Bearing Block R	1	
69	BCRI200A.201	Scraper	1	
70	GB889-86/M10	Lock Nut M10	3	
71	GB97.1-10	Plain Washer 10	3	
72	GB/T5783/10X30	Bolt M10x30	3	
73	BCR200.003	3-Point Linkage	1	
		<i>Hammer Blades for BCR</i>		
		BCR 140	16	
		BCR 160	20	
		BCR 180	24	



NO.	PART #	NAME & SPECIFACATION	QTY.	REMARK
1	BCRI200.051	Connected pin for Cylinder	2	
2	BCRI200.050	Connected Tube R	1	
3	BCRI200.049	Connected Tube L	1	
4	BCRI200.048	Lifting Frame	1	
5	BS/A21.50(G1/2)	Bonded Washer	4	
6	STU-G1/4	Throttle Valve	1	
7	BS/A13.70(G1/4)	Bonded Washer	7	
8	BCRI200.044	Lifting Inlet Pipe	1	
9	BCRI200.040	Long Pin Weldment	4	
10	BCRI200.124	Protected Pin 1	1	
11	BCRI200.127	Protected Pin 2	2	
12	BCRI200.053	Short Pin Weldment	1	
13	BCRI200.054	Arm-Brace Weldment	1	
14	BCRI200.047	Lifting Frame Weldment	1	
15	BCRI200.052	Swing Cylinder	1	
16	BCR140.200	Pipe Clamp	1	
17	GB97.1-85/14	Plain Washer 24x4	5	
18	GB889.1-M24	Lock Nut M24	5	
19	GB97.1-85/12	Plain Washer 12	4	
20	BCRI200.125	Spring Leaf	1	
21	GBT889.1-M12	Lock Nut M12	2	
22	GB5783-86/12X40	Bolt M12x40	2	
23	GB97.1-85/6	Plain Washer 6	1	
24	GB93-87/6	Spring Washer 6	1	
25	GB 5783-86/6X16	Bolt M6x16	1	
26	011	Lock Pin	3	
27	04	R Pin	5	
28	M10X1	Grease Zerk	5	

NO.	PART #	NAME & SPECIFACATION	QTY.	REMARK
29	30x34x40SF-2	Oilless Bearing	9	
30	BCRI200.126	Shaft Hook	1	
31	BCRI200.117	Adaptor 1	3	
32	EF175-121	Pipe Plug	2	
33	BCRI200.056	Short Brace Weldment	1	
34	EF175-116	Brace Pin	2	
35	BCRI200.116	Adaptor 2	3	
36	BCRI200.045	Lifting Outlet Pipe	1	
37	BCRI200.043	Lifting Inlet Pipe	1	
38	BCRI200.056	Swing Pipe (2150)	1	
39	BCRI200.056	Swing Pipe (2000)	1	
40	G/12	Quick Connect	4	
41	LG180.104	Upper Linkage Pin	1	
42	BCRI200.055	Lower Linkage Pin	2	
43	BCRI200.036	Lifting Frame Weldment	1	
44	BCRI200.037	Lifting Connect Plate	1	
45	BCRI200.039	Lifting Support Plate	1	
46	BCRI200.038	Lifting Cylinder	1	
47	BCRI200.002	Hydraulic Lock Assembly	1	
48	BW16	Bonded Washer 16	4	
49	M16X1.5	Hollow Bolt	2	
50	80X85X60SF-2	Oilless Bearing	1	
51	80X85X55SF-2	Oilless Bearing	1	
52	M6X1	Grease Zerk	3	

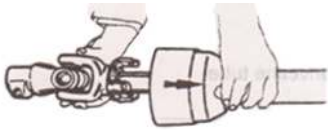
PTO Shaft Resizing

Safety: Ensure tractor & machine is stopped and keys are out of the ignition before carrying out any work. If you are not confident in carrying out the work, consult your local supplier or mechanic.

Most PTO driven implements are supplied with a standard size PTO shaft. As all tractors vary, this often means cutting it down to size. Always replace worn or damaged PTO shafts.

Attach the machine to the tractor without the PTO shaft, raise the linkage so the PTO shaft is level/horizontal. Measure the length between tractor PTO and the machine's shaft. If the compressed (closed) PTO shaft length exceeds the one measured here then the driveline will need to be cut.

1. PTO length adjustment, First remove shaft shielding



2. Shorten the driveline tubes to proper equal lengths



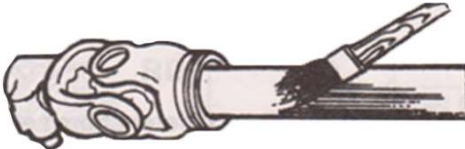
3. Tidy edges of the drive tube with a file and clean all fillings from the tubes



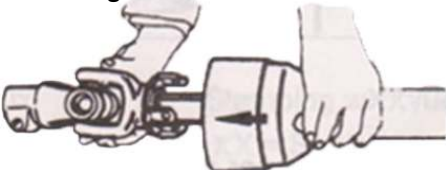
4. Shorten the equally long guard tubes to the same length as the driveline tubes



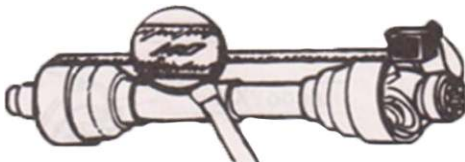
5. Grease the internal driveline tube



6. Fit the guard on the shaft



7. Make sure that the length allows for at least 6 inches of overlap



Trouble Shooting

<i>PROBLEM</i>	<i>SOLUTION</i>
Belt Slipping	Clean the mower deck Adjust the belt tension Replace belts
Patches of uncut grass	Mow at 540 PTO rpm, Check PTO speed & tractor power output Change into a lower gear on the tractor Tighten Belts Replace any missing/damaged blades
Excessive Vibration	Replace belts Replace blades Align/replace belt pulleys Remove belt guard and clean debris from belt area Remove debris from rotor Check PTO shaft for damage and replace
Gearbox Noisy	Check oil level and top up if required Extract the oil/debris and replace with new oil
Blades Scalping	Raise cutting height Change mower pattern/route Reduce speed when turning
Uneven Cut	Change into a lower gear on the tractor Level the mower using tractor linkage/hydraulics Replace any missing/damaged blades
Tractor Loaded Down by Mower	Mow at 540 PTO rpm Change into a lower gear on the tractor Clean off the mower Check power output on your tractor



PARTS REQUEST FORM

fax to 541-895-2756 or Email

Parts@betstproducts.com

Name: _____

Model Number: _____

Address _____

Serial Number: _____

City State Zip: _____

Purchased From: _____

Phone: _____

Purchase Date: _____

Email: _____

Item #	Description	QTY	Price	Amount

Comments:

Value-Leader Brand 1 Year Warranty

Unless otherwise stated on purchase invoice, Betstco warrants to original Purchaser that Value-Leader products are free from major defects in material under normal use and service for a period of 1 Year from the date the product is purchased or shipped, whichever is later. Commercial use 180 days. Use at address that is not yours, is considered commercial use. Consumable, Expendable, Wear Items (Rubber plastic parts, hydraulic hoses, belts, tires, cables, blades, tines, wedges, teeth, tiups, chains, pins, brushes, filters, etc) and cracked hydraulic pumps, bent or broken cylinder rods are not covered under this warranty. Warranty does not cover items that have been modified, damaged by abuse or usage not in accordance with design or maintenance.

Betstco obligation under this warranty is to repair or replace defective upon approval by; Betstco, 83371 Melton Rd, Creswell OR 97426 that Warranty Claim is valid. Product shall be returned upon request of Betstco. Transportation charges to be prepaid by user.

Gasoline or diesel engines used to powered Value-Leader products are covered by the warranty of the appropriate engine manufacturean Purchaser must look to the engine manufacture for all issues relating to engine operation.

Betstco assumes no responsibility for outside labor.

PERMISSABLE BY APPLICABLE LAW, BETSTCO HEREBY DISCLAIMS ALL WARRANTIES OF ANY KIND, EITHER EXPRESS OR IMPLIED, INCLUDING, ANY IMPLIED WARRANTIES WITH RESPECT TO THE PRODUCT PURCHASED, WITHOUT LIMITING THE GENERALITY OF THE FOREGOING, BETSTCO HEREBY EXPRESSLY DISCLAIMS ALL LIABILITY FOR PRODUCT DEFECT OR FAILURE, CLAIMS THAT ARE DUE TO NORMAL WEAR, PRODUCT MISUSE, ABUSE, PRODUCT MODIFICATION, IMPROPER PRODUCT SELECTION, NON-COMPLIANCE WITH ANY CODES, OR MISAPPROPRIATION. BETSTCO MAKES NO WARRANTIES TO THOSE DEFINED AS "CONSUMERS" IN THE MAGNUSON-MOSS WARRANTY FEDERAL TRADE COMMISSION IMPROVEMENTS ACT. THE FOREGOING EXCLUSION OF IMPLIED WARRANTIES DO NOT APPLY TO THE EXTENT PROHIBITED BY LAW. PLEASE REFER TO YOUR LOCAL LAWS FOR ANY SUCH PROHIBITIONS.

THERE SHALL BE NO LIABILITY FOR PRODUCT LIABILITY OR LIABILITY ON THE PART OF BETSTCO FOR ANY GENERAL SPECIAL OR CONSEQUENTIAL DAMAGES ARISING OUT OF THE SALE OR USE OF ANY PRODUCTS SOLD BY BETSTCO OR AN AGENT THEREOF, BETSTCO MAKES NO WARRANTIES, EXPRESS OR IMPLIED, (INCLUDING, BUT NOT LIMITED TO, ANY WARRANTY OF MERCHANTABILITY OR FITNESS OF THE PRODUCTS FOR ANY PURPOSE) WITH RESPECT TO THE PRODUCTS COVERED BY THIS AGREEMENT EXCEPT AS IN THIS PARAGRAPH OTHERWISE EXPRESSLY PROVIDED.

THIS IS THE SOLE AND ONLY WARRANTY OF VALUE-LEADER PRODUCTS, NO OTHER WARRANTY IS APPLICABLE, EITHE EXPRESSED OR IMPLIED, IN FACT BY LAW.

This warranty shall not be interpreted to render Betstco, or any authorized agent liable for injury or damages of any kind or nature, direct, consequential, or contingent, to a person or property.

The sole and only remedy in regard to any defective product shall be the repair or replacement thereof as herein provided, Betstco, agent(s) of Betstco shall not be liable for any consequential, special, incidental or punitive damages resulting from or caused by any such defects

Betstco reserves the rights to make improvements in design or changes in specifacations at any time, without incurring any obligations to owners of the units previously sold.

WARRANTY VOID IF REGISTRATION IS NOT RECEIVED OR RECORDED ONLINE WITHIN 30 DAYS OF PURCHASE DATE OR SHIP DATE, WHICHEVER IS LATER.



ITEM: _____ MODEL# _____ PURCHASE DATE: ____/____/____

PURCHASED FROM: _____ GIFT INV# ORDER# _____

OWNER NAME: _____ SERIAL # _____

OWNER ADDRESS: _____

CITY: _____ COUNTY: _____ ST: _____ ZIP: _____

PHONE: _____ EMAIL: _____

ACCEPTANCE OF RESPONSIBILITY:

I (PURCHASER) HAVE READ OPERATORS MANUAL AND LIMITED WARRANTY OR SOMEONE HAS READ/AND EXPLAINED ALL INSTRUCTIONS TO ME. I UNDERSTAND THIS WARRANTY DOES NOT COVER ANY LABOR AND THAT ALL DISPUTES WILL BE SETTLED BY BINDING ARBITRATION. BINDING ARBITRATION IS CONDUCTED BY THE BETTER BUSINESS BUREAU (BBB) LOCATED AT 4004 SW KRUSE WAY PLACE ST 375 LAKE OSWEGO OR 97035 OR THE CURRENT BBB LOCATION CLOSEST TO BETSTCO. I ACKNOWLEDGE MY LIMITED WARRANTY IS VOID IF ANY ATTEMPT TO REPAIR OR REPLACE DEFECTIVE PARTS HAS BEEN MADE BY UNAUTHORIZED PERSONNEL. I ACKNOWLEDGE RECEIPT OF MY OPERATORS MANUAL AND HAVE READ THE SAFE OPERATION SECTION. I ACKNOWLEDGE UNDERSTANDING MAINTENANCE AND SAFE OPERATION REQUIREMENTS, ITEM SPECIFICATIONS, OPERATION, CONTROLS AND STORAGE REQUIREMENTS. **I UNDERSTAND THAT IS ALONE AM RESPONSIBLE FOR PROPER MAINTENANCE, CARE AND SAFE OPERATION OF THIS VALUE-LEADER ITEM**

I (PURCHASER) AGREE THAT PERSONS NOT FAMILIAR WITH THE OPERATION OF THIS ITEM SHOULD NOT BE ALLOWED TO USE IT. CHILDREN ESPECIALLY SHOULD NOT OPERATE OR BE NEAR POWER PRODUCTS WHEN IN USE. ANYONE OPERATING VALUE-LEADER PRODUCTS SHOULD HAVE READ OPERATIONS MANUALS AND SAFETY MANUALS.

OWNERS SIGNATURE: x _____ DATE: ____/____/____

YOU MUST SIGN THIS WARRANTY AND MAIL OR FAX A COPY TO BETSTCO, 83371 MELTON RD N. #3, CRESWELL OR. IF YOU PREFER YOU MAY COMPLETE YOUR REGISTRATION ONLINE AT WWW.VALUE-LEADER.COM. THIS WARRANTY IS NOT EFFECTIVE UNLESS PURCHASER COMPLETE REGISTRATION AND WARRANTY FOR WITHIN 30 DAYS OF PURCHASE OR SHIP DATE WHICHEVER IS LATER.

NOTE: WE MAY REFUSE WARRANTY OF ANY KIND UNLESS BETSTCO, RECEIVES A COMPLETED, LEGIBLE AND SIGNED WARRANTY REGISTRATION. IT IS THE RESPONSIBILITY OF THE PURCHASER TO ASSURE THAT REGISTRATION DOCUMENT IS RECEIVED BY BETSTCO.

1 YEAR EXTENDED WARRANTY & REGISTRATION
VALUE LEADER IMPLEMENTS
BRANDED PRODUCTS
1 YEAR EXTENDED WARRANTY

1 Year Extended Warranty amends to original Recorded Warranty Registration the time period of described coverage. Extended Warranty does not apply to consumable and Expendable Item as described in Product Warranty Registration.

This amendment does not affect any other part of recorded Warranty Registration or policy.

No one is authorized to alter, modify, or enlarge this Amendment to original recorded Warranty Registration

EXTENDED REGISTRATION & PAYMENT MUST BE RECEIVED
WITHIN 30 DAYS OF PURCHASE DATE

EXTENDED WARRANTY REGISTRATION

PRODUCT & MODEL # _____

SERIAL # _____

OWNER NAME : _____

BETSTCO INVOICE # _____

ACCEPTANCE OF RESPONSIBILITY:

I (PURCHASER) HAVE READ AND UNDERSTAND THE EXTENDED WARRANTY OR SOMEONE HAS READ AND EXPLAINED ALL THE ABOVE TO ME. I UNDERSTAND THIS EXTENDED WARRANTY DOES NOT COVER ANY LABOR. I HAVE FILED MY ORIGINAL WARRANTY REGISTRATION AND FULLY UNDERSTAND MY REQUIREMENTS. ***I UNDERSTAND THAT I ALONE AM RESPONSIBLE FOR PROPER MAINTENANCE, CARE AND SAFE OPERATION OF THIS TRACTOR IMPLEMENT.***

OWNERS SIGNATURE: x _____

DATE: ____/____/____

YOU MUST SIGN THIS WARRANTY AND MAIL OR FAX A COPY TO BETSTCO, 83371 MELTON RD, CRESWELL OR. IF YOU PREFER YOU MAY COMPLETE YOUR REGISTRATION ONLINE AT WWW.VALUE-LEADER.COM. THIS WARRANTY IS NOT EFFECTIVE UNLESS PURCHASER COMPLETE REGISTRATION AND WARRANTY FOR WITHIN 30 DAYS OF PURCHASE OR SHIP DATE WHICHEVER IS LATER.

NOTE: WE MAY REFUSE WARRANTY OF ANY KIND UNLESS BETSTCO, RECEIVES A COMPLETED, LEGIBLE AND SIGNED WARRANTY REGISTRATION. IT IS THE RESPONSIBILITY OF THE PURCHASER TO ASSURE THAT REGISTRATION DOCUMENT IS RECIEVED BY BETSTCO.