

FHM PTO DRIVELINES

BETSTCO

RUGGED LABOR SAVING EQUIPMENT SINCE 1995

AGRI-MACHINERY



OPERATION & PARTS MANUAL

Please read these instructions before using. Always grease all fittings and be sure to always check and fill with oil before operating! Retain this manual for future use.

BETSTCO 

www.Betstco.com

541-895-3083 M-F 7am-4pm PST

RUGGED LABOR SAVING EQUIPMENT SINCE 1995 83371 Melton Rd, Creswell OR 97426

Value Leader
Customer Satisfaction Guaranteed



Pow'R kraft

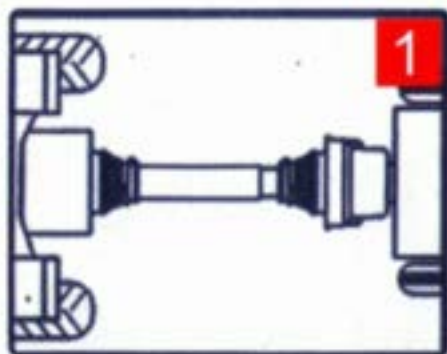




Do not operate the machine without the driveline, tractor, and implement shields in place. Driveshaft shields must turn freely on the driveline.

Keep operators and bystanders away from all moving parts.

CONTACT WITH A ROTATING DRIVELINE CAN CAUSE SERIOUS INJURY OR DEATH



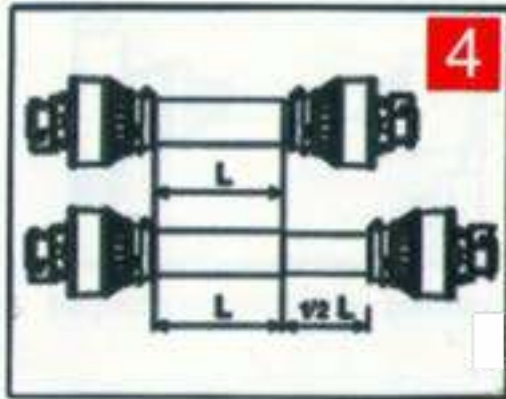
All rotating parts must be shielded



The driveline must be securely attached at both ends.
Guards must turn freely on the driveline

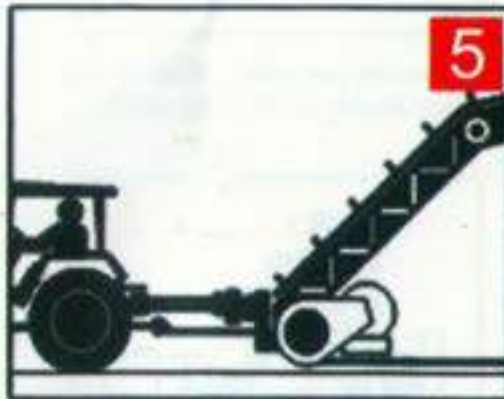


Shut off tractor engine and remove the key before
approaching the implement or doing any maintenance

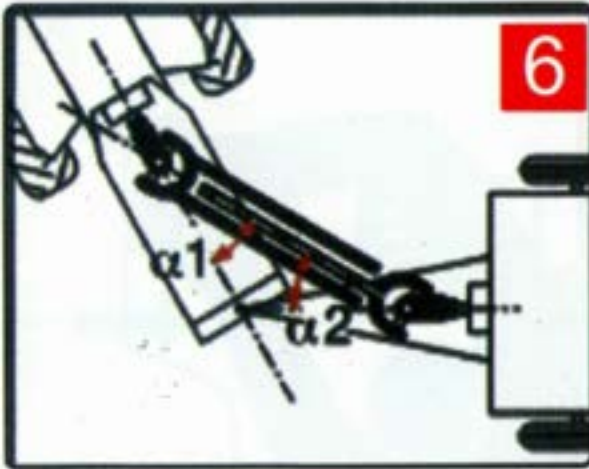


Confirm the minimum and maximum working lengths of the driveshaft.

The telescoping tubes must overlap by at least $\frac{1}{3}$ of their length while in use.



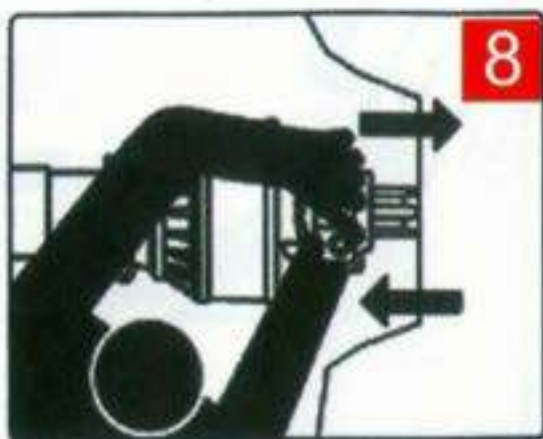
The tractor must be hitched to the implement and positioned so that the angles of the joint are minimal and equal.



Disengage the PTO if the angles are too large or not identical



BEFORE ATTEMPTING ANY REPAIR PROCEDURES, ALWAYS WEAR APPROPRIATE SAFETY DEVICES. ITEMS SUCH AS SAFETY GLASSES, SAFETY SHOES, AND GLOVES. DO NOT WEAR LOOSE OR BAGGY CLOTHING AROUND THE PTO SHAFT.



Ensure that the driveline is securely attached to the tractor and the implement before operating.



Clean and grease the tractor PTO and implement shaft before installing the driveline.



PUSH PIN

Push the pin and slide the yoke onto the PTO shaft so that the pin engages the groove on the PTO.

Make sure that the pin returns to its initial position after attachment to the shaft.



BALL COLLAR

Pull collar toward driveline and slide the yoke onto the PTO shaft. Pull towards driveline to make sure collar is locked onto PTO shaft.



CLAMP BOLT

Slide the yoke onto the PTO and insert the bolt.



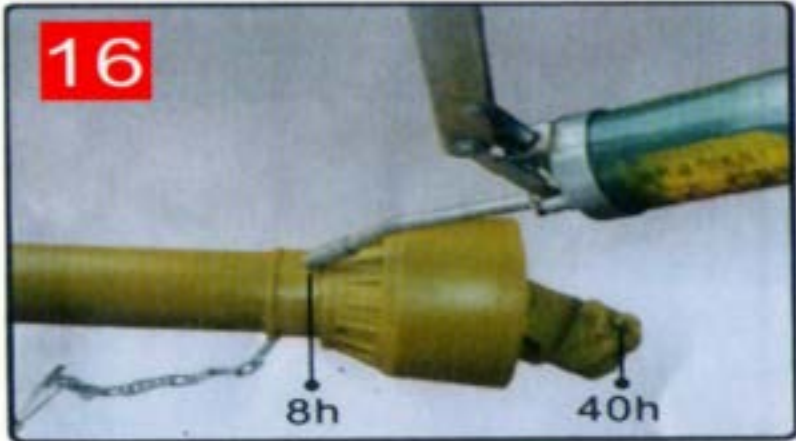
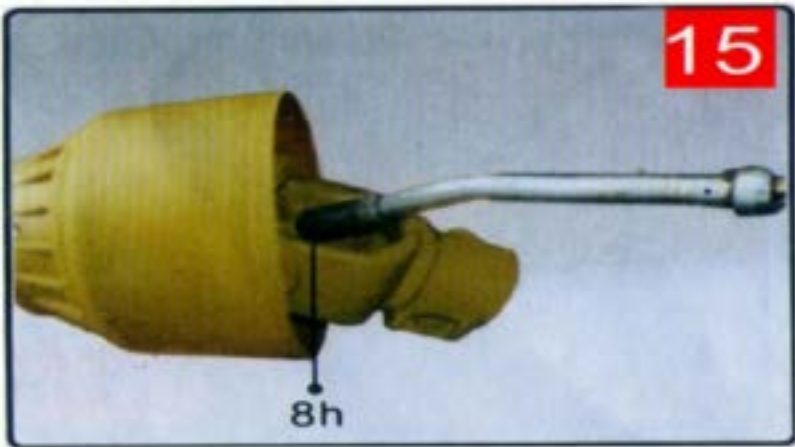
CLAMP BOLT

Slide the yoke onto the PTO and insert the bolt.



PLAIN BORE AND KEYWAY

Choose the bolt length in such a way as to minimize protrusion.



LUBRICATION:

Frequent lubrication is required,
Grease the driveline shaft parts
After the number of hours used
As shown on the drawing above



DISMANTLE:

1. Dismantle the inside tube from the outside one
2. Take a screwdriver to depress the buckle from one to another then to take outside tube apart from plastic cap.



3. Remove the nylon bearing from the slot of the yoke.
4. Repeat the above-mentioned steps for the other side



INSTALLATION:

1. Grease the slot on the yoke.
2. Put the nylon bearing into the slot of the yoke.



3. Put the inside tube with the yoke into its plastic cover.
4. Align the bearing with the two holes on the plastic cap and then press it.



SHORTENING THE DRIVESHAFT

(We don't recommend modification to our products.)



1. Remove shielding.
2. Shorten the inside and outside drive tubes to the required length. Shorten the drive tubes one at a time by cutting the same length from both inside and outside tubes.



3. De burr edges of the drive the with a file and clean all filings from the tubes



4. Shorten the plastic shield tubes one at a time by cutting the same length that was cut from the inside drive tubes.



3. Grease the internal drive tube and reassemble the shielding on the driveshaft.



Check the length of the driveshaft in the minimum and maximum positions of the machine. The drive tubes should overlap by $\frac{1}{3}$ of their length during working conditions; Shield tubes should never separate while in use.

This device prevents transmission of inertial loads from implement to the tractor during deceleration of stopping of the implement. Keep clear of the implement until all parts have stopped moving. Lubricate every 50 hours of use or after storage.



SA-RATCHET TYPE TORQUE LIMITER

This device interrupts the transmission of power when the torque exceeds the setting.

Immediately disengage the PTO when ratcheting sounds are heard.

Lubricate every 50 hours of use and after storage.

32



SB-SHEAR BOLT TORQUE LIMITER

This device interrupts the transmission of power by shearing a bolt when the torque exceeds the setting. Replace the sheared bolt with the same diameter, length and grade as the original. Lubricate the SB with grease fitting at least once every season and after a period of disuse.



FF-FRICTION TORQUE LIMITER

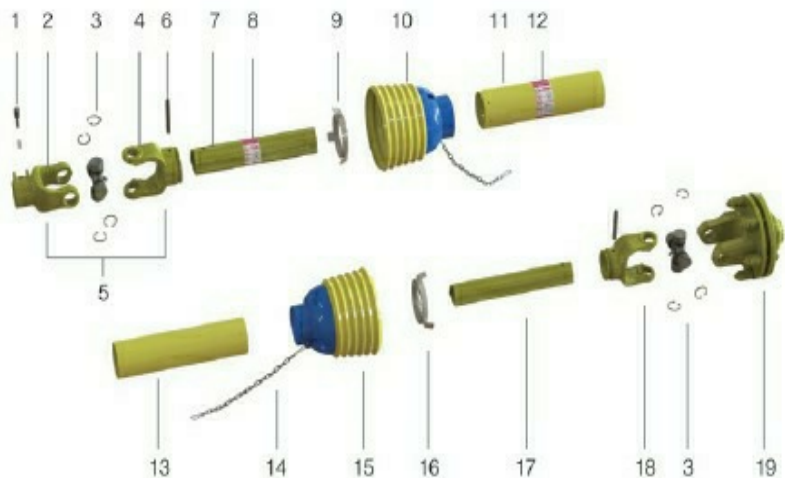
Limits torque transmission to the setting value. Do not change spring compression as this will modify the device setting.

The torque setting is adjusted by increasing or decreasing the height of the springs. To increase/decrease the torque setting tighten/loosen the eight nuts by 1/4 of a turn and check for correct operation. Repeat the procedure if necessary. Avoid excessive tightening of the bolts- implement, tractor, or driveline damage may occur.

Betstco Farmer-Helper Series



型号 Model					花键 Spline	马力 Supporting horsepower (H.P.)	扭矩 Torque (Nm)	
	D x L (Cross)	h x s (Inner)	代号 Code	代号 Code				
025B	22 x 54	26.6 x 3.5	002	32.4 x 2.5	003	ASAE	12-18	175-215
	22 x 55							
03B	24 x 63	29 x 4	004	36.1 x 3.4	005	1 1/8" Z6	20-30	250-300
	23.8 x 61.3							
035B	27 x 70	36.1 x 4	007	43.4 x 3.3	008	1 3/8" Z21	25-35	330-420
04B	27 x 74.5							
042B	27 x 81.7	44.7 x 4	009	51.3 x 3	010	1 3/4" Z20	25-45	380-500
045B	30.2 x 80							
047B	30 x 88	44.7 x 4	009	53.6 x 3.8	012	1 3/4" Z6	35-55	420-600
05B	30.2 x 92							
06B	30.2 x 106.3	44.7 x 4	009	53.6 x 3.8	012	1 1/2" Z8	40-60	450-650
062B	32 x 76							
063B	32 x 92	44.7 x 4	009	53.6 x 3.8	012	38 x 32 x 6-Z8	40-60	450-650
	32 x 94							
064B	35 x 94	44.7 x 4	009	53.6 x 3.8	012	48 x 42 x 8-Z8	40-65	700-900
065B	35 x 98							
068B	36 x 89	44.7 x 4	009	53.6 x 3.8	012	60 x 52 x 10-Z8	40-65	700-900
07B	35 x 106.3							
073B	38 x 102.3	44.7 x 5.5	011	53.6 x 3.8	012	花键可由 客户选择	55-80	800-1000
						Customer Choice	50-80	800-1000
							50-80	900-1200
							55-90	900-1200
							65-100	1000-1300
							65-100	1000-1300
							65-100	1000-1300
							70-120	1250-1800



Code	Description	Code	Description
1	Pin kit	11	Outer shield tube
2	End yoke for tractor side	12	Safety label for outer shield tube
3	Cross journal with four circlips	13	Inner shield tube
4	Outer tube yoke	14	Safety chain
5	U-joint assembly	15	Inner shield cone
6	Tension pin	16	Inner shield bearing
7	Outer tube	17	Inner tube
8	Safety label for telescoping tube	18	Inner tube yoke
9	Outer shield bearing	19	Friction clutch
10	Outer shield cone		

MODEL AND PICTURE



04B



05B



04B-LF



05B-LF



04B-ED



05B-ED

83371 Melton Rd.
Creswell OR 97426
Phone: 541-541-895-3083
Email: cservice@betstco.com
www.Betstco.com