



RUGGED LABOR SAVING EQUIPMENT SINCE 1995

WC SERIES POWER FEED WOOD CHIPPER



OPERATION & PARTS MANUAL

Please read these instructions carefully before using! Always grease all fittings and be sure to always check and fill with oil before operating! Retain this manual for future reference.



Betst Products, llc.
83371 Melton Rd., Creswell OR 97426

Phone: 541-895-3083
www.betstco.com

Specifications subject to change without notice.

Table of Contents

1. Introduction	3
2. Setup and Assembly Instructions	3
3. PTO Driveshaft Safety Tips	6
4. Protective Guards and Shields	6
5. Safety Instructions	7
6. Operator Protective Gear	8
7. Operation Checklist	8
8. Chipper Operation	9
9. Blade Replacement	10
10. Lubrication Frequencies and Locations	11
11. Preventive Maintenance	12
12. Troubleshooting	12
13. Parts and Fasteners	13
14. Parts Illustration	14
15. Parts List	15
16. Further Plugging Diagnostics	21
17. Adjusting for Belt Rollover	22
18. Parts Request Form	24
19. Limited Warranty	25
20. VL Warranty Registration	26

Revised: 03-2012

1. INTRODUCTION

Before using your wood chipper, read and understand this operation manual and the accompanying maintenance instructions. It contains important information which will help you observe proper safety precautions, get the most work from your wood chipper and help prolong the life of your chipper.

2. SETUP and ASSEMBLY INSTRUCTIONS

Your chipper will arrive in a metal shipping frame. This frame can be dismantled in minutes to allow access to all parts of your chipper.

The feed chute is located on top of the chipper; located at the bottom you will find the PTO driveline, lower frame pieces, and discharge chute, which contains the parts bag.

Remove and assemble the lower stand base, place chipper on stand and bolt on, Attach the 2 hitch assemblies, Attach PTO Safety shield, Attach the feed chute, Attach feed roller handle, Attach discharge chute, Adjust safety shut-off cables.

Before Operation check all Bolts, Nuts, Set Screws and Zerks for tightness. This will require removal of the Main Shaft Shield and the Removal of Feed Roller Shield. While Main Shaft Shield is removed observes all nuts and bolts for tightness and verify Pulley faces are aligned well. Verify the tightness of all 3 blades. Check Fluid level of Feed-Roller Gear-Box; Fluid Type TH22-Tractor Hydraulic Fluid





3. PTO DRIVESHAFT SAFETY TIPS

Your chipper is shipped with a PTO driveshaft. When using the PTO driveshaft, keep your tractor adjusted as close to the chipper as possible.

Always ensure that the PTO shaft is no more than 15 degrees of horizontal when operating.

- The following steps are recommended for safe operation of the driveshaft under field conditions.
- Test hitch angle to prevent the driveshaft from:
 - Extending beyond the recommended maximum length.
 - Bottoming out
 - Reaching a position that allows joints to lock
 - Exceeding the maximum allowable angle for constant velocity (CV) joints.
- Specify and test telescoping members to allow the lowest possible thrust loads, considering the expected working conditions.
- Specify and test torque limiters to control excessive shock.
- Where necessary, specify and test overrun clutches to prevent inertial loads from overpowering the tractor.
- Provide a means to support the drive shaft when it is disconnected from the tractor, to prevent damage during storage or transportation.
- Provided drive shaft is of Shear design using a Grade 4 bolt, if replacing this bolt do not use higher grade as this may cause damage to the PTO driveshaft, Implement, or your tractor.
- On drive shafts with torque-limiting or overrun devices, be sure to connect the device on the end of the drive shaft nearest the chipper.
- Provide a proper clearance zone for the operation of the driveshaft, to avoid damage to the shielding components.
- It is not recommended to use PTO adaptors which may defeat the purpose of the tractor's master shield and/or adversely affect the performance of the driveshaft.

4. PROTECTIVE GUARDS AND SHIELDS

Do not allow the chipper to be operated without the chip deflector properly in place.

PTO driveshaft should consist of a PTO master shield, integral driveshaft shield, and a chipper input connection shield.

1. Follow all chipper and tractor instruction labels and manuals. The chipper should be used only with the tractor's PTO master shield in place.
2. Specify and test an integral driveshaft shield with end cones which will overlap, but not interfere with the PTO master shield or chipper input connection shield.
3. A chipper input connection shield should be used in addition to the integral driveshaft shield, in order to guard the shaft coupling and any torque limiting device installed on the driveshaft.
4. Check that all routine maintenance of the driveshaft can be done without removal of the shields.

5. SAFETY INSTRUCTIONS

Do not attempt to operate the chipper until you have read and understood this manual.

Always keep guards and chipper shields properly installed while operating the chipper.

Keep the decals in place and verify they are understandable. New labels can be ordered from Betst Power Equipment upon request. If your chipper is repainted, be sure the labels and decals remain visible.

Never leave the chipper running unattended.

Do not attempt alterations, repairs or adjustments while chipper head is turning. Always disconnect the PTO and stop the tractor motor, then put keys in your pocket.

Keep hands, feet and other extremities out of and away from the hopper. When checking blades or adjusting the cutting bar, EXERCISE EXTREME CAUTION! If accidentally rotated, the flywheel can contain enough residual energy to cause serious injury.

Point the discharge chute away from doorways, sidewalks, or any areas where your view is obstructed.

The chute should be pointed downwind when possible.

Keep everyone, especially children, away from the operation area.

Anyone who has not read and understood this manual should not be in the area.

6. OPERATOR PROTECTIVE GEAR

The following protective clothing and gear is recommended when using your chipper:

EYES	--	Wraparound Safety Glasses or Goggles
EARS	--	Ear Plugs
HANDS	--	Leather Gloves
FEET	--	Steel-Toed Boots
LEGS	--	Heavy Pants
ARMS	--	Long-Sleeved Shirt

NO LOOSE CLOTHING SHOULD BE WORN AROUND THE CHIPPER!

7. OPERATION CHECKLIST

CAUTION: Turn the chipper head over by hand before applying power to make sure that the head is clear, all the bolts are clear, and the blades clear the case and cutter bar.

Make sure that:

- The feed roll drive-shaft and pivots are properly lubricated.
- The feed roll clutch is properly lubricated, and the clutch releases when handle or foot pedal is depressed.
- The PTO shaft doesn't come apart or bottom out during the normal lifting range.
- The discharge chute is pointed in a safe direction

During and after operation, check the chipper pile to see if the blades need to be serviced. Long slivers in the chip pile are one of the best indications of dull blades.

8. CHIPPER OPERATION

Remember that the chippers blades must be sharp to operate properly. Dirt, rocks, nails, or other foreign material will shorten blade life.

Always review the manual before operating the chipper. Locate chipper in a safe area with the discharge chute pointed away from doorways, sidewalks, or any areas where your view is obstructed. After rotating the chipper by hand and making sure there are no obstructions in the head, attaching PTO driveshaft, start the motor of tractor and elevate or lower the chipper until the PTO shaft is within 15 degrees of horizontal.

With the PTO engaged release the PTO clutch slowly. Gradually increase speed until the tractor PTO speed is 540 rpm.

Do not move the unit while the flywheel is turning.

Block the wheels of the tractor and set the parking brake while running the chipper.

Feed material into the head with the largest end first.

The feed roll will fold branches as they are pulled into the hopper. Occasionally, a fork in the branch may have to be cut to feed properly.

If the material stops the feed roll, release the feed roll clutch by depressing either upper handle or lower foot pedal. Hold the clutch in the disengaged mode and pull the material out of the hopper. Release the feed roll clutch and the feed roll will turn again.

If unit slows down noticeably, first shut off the PTO power, then the tractor. Keep the keys in your pocket.

Unplug the head by turning it backwards by hand with the discharge chute and top and lower section clean-out covers off.

Remove the chips from the top of the head, the upper and lower clean-outs.

Replace the upper and lower clean-out covers.

Turn the head by hand to be sure it turns freely. If head fails to rotate completely repeat steps above.

Once head turns freely again replace the discharge chute.

Be sure all shields and deflectors are replaced before operating again.

When you have finished working be sure there is nothing in the head or feed roll.

After shutting down the unit rotate the head by hand backwards to remove any small chips or debris.

9. BLADE REPLACEMENT

The best way to tell if the blades need replacing is to watch the chips coming out of the discharge. If they are long and stringy, the blades need to be serviced or replaced. Sometimes blades may feel sharp to the fingers, but may be worn or rounded. The blades are all reversible.

Dull blades cause many problems, including:

- Loss of cutting power
- Jamming or Plugging of the discharge chute
- Rough cutting with more vibration than usual
- Broken feed roll shaft
- Wear or Loosening of the main bearing causing the flywheel or blades to come in contact with the case or bed blade.
- Feed roll kicking out of gear
- Lack of material feeding

To remove the blades, take the PTO shaft out of gear. Shut off the tractor and keep the keys in your pocket. The blades are accessed by removing the inspection plate on the side opposite the chute.

Unhook the feed roller springs, block the feed roll up, and with an Allen Wrench on the chute side and a socket on the other, and remove the attachment bolts. If necessary a small screwdriver can be used to clean

the allen wrench bolt heads. Be sure to note the position of the blade before removing, to ensure new blade is placed in the same location.

Caution: Be Sure Not to Drop any Parts Inside. Remove the blade and replace with new blade.

Blade installation is opposite of removal, being sure to position in same relation to Bed blade as before.

Torque the blade attachment bolts to 50ft/lb, ensuring the bolts run through the flywheel.

Replace the inspection plate and reattach the springs.

Rotate the cutting head by hand before applying power. The Bed Blade should be adjusted to a distance of 0.10 to 0.30 inches from the blades by loosening the bolts in the slotted holes at the bottom of the chute and moving the blade on the slots. The more gap will cause a larger finished chip.

Tighten the adjustment bolts to 35ft/lb of torque.

10. LUBRICATION FREQUENCIES AND LOCATIONS

PTO SHAFT – 2 zerks on Universal Once a day with Multipurpose Grease.

SLIP JOINT – Lubricate with multipurpose grease.

FEED ROLL PIVOT – Is Lubricated during manufacturing, it may need to be replaced after 200 ~ 400 hours of operation. Contact support@betstco.com if you think this part may need to be replaced.

FEED ROLL DRIVESHAFT – Feed roll drive shaft should be lubricated every 4 ~ 8 hours depending on the amount of fine particulates in the air. lubricate both the sliding parts with multipurpose grease, particularly before each use.

FEED ROLL CLUTCH – While feed roll shaft is off, lubricate the feed roll clutch inside and outside with multi-purpose grease.

REDUCTION GEAR BOX – Check Oil Level every 12 to 16 hours of operation.

FEED ROLLER PILLOW BLOCK BEARINGS – 2 zerks on either side of shaft with multipurpose grease every 100 hours of operation.

DRIVE SHAFT & FLYWHEEL SHAFT PILLOW BLOCK BEARINGS – 4 zerks on either side of shaft with multipurpose grease every 16 to 24 hours of operation.

11. PREVENTIVE MAINTNANCE

Check all bolts, set screws and fasteners after 4 hours of operation, and once per day thereafter.

Check for loose belts and broken pulleys, loose springs, dry slides, and proper lubrication of both feed roll driveshaft and feed roll clutch.

The main drive belts on the chipper need to be checked every 8 hours of operation; ¼” to ½” deflection. To tighten these belts, first loosen the four bottom nuts that hold the jack shaft bearing. Loosen them 3 turns, and then move the nuts on top of the bearings down an equal amount. Keep the jack shaft parallel with the main shaft. Torque the bottom nuts to 80 ft lbs.

The feed roll belt needs to be checked every 12 hours of operation. ¼” to ½” deflection The feed roll belt can be adjusted by first loosing the 4 bolts that hold the reduction gear box to the base, then moving the gear box and re tightening the bolts to 40ft/lb of torque.

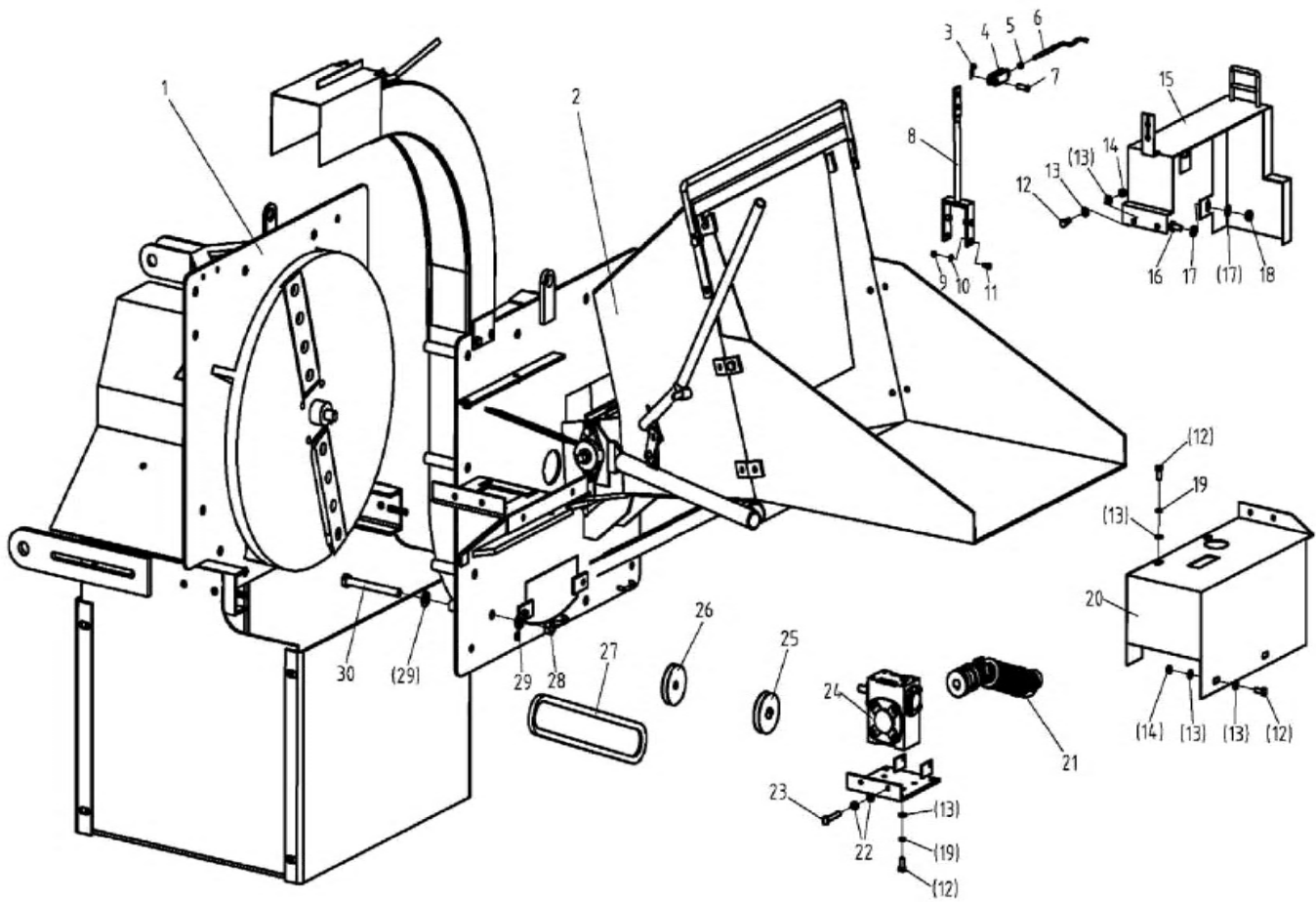
All decals and safety instructions should be kept with the chipper. It is the operator’s responsibility to replace the decals as needed. In the event that they become worn or illegible, replacements are available.

12.TROUBLESHOOTING

PROBLEM: *Flywheel slows but tractor does not*

<u>Possible Causes</u>	<u>Solution</u>
Main drive belts slipping	Tighten main drive belts

Wood Chipper Assembly

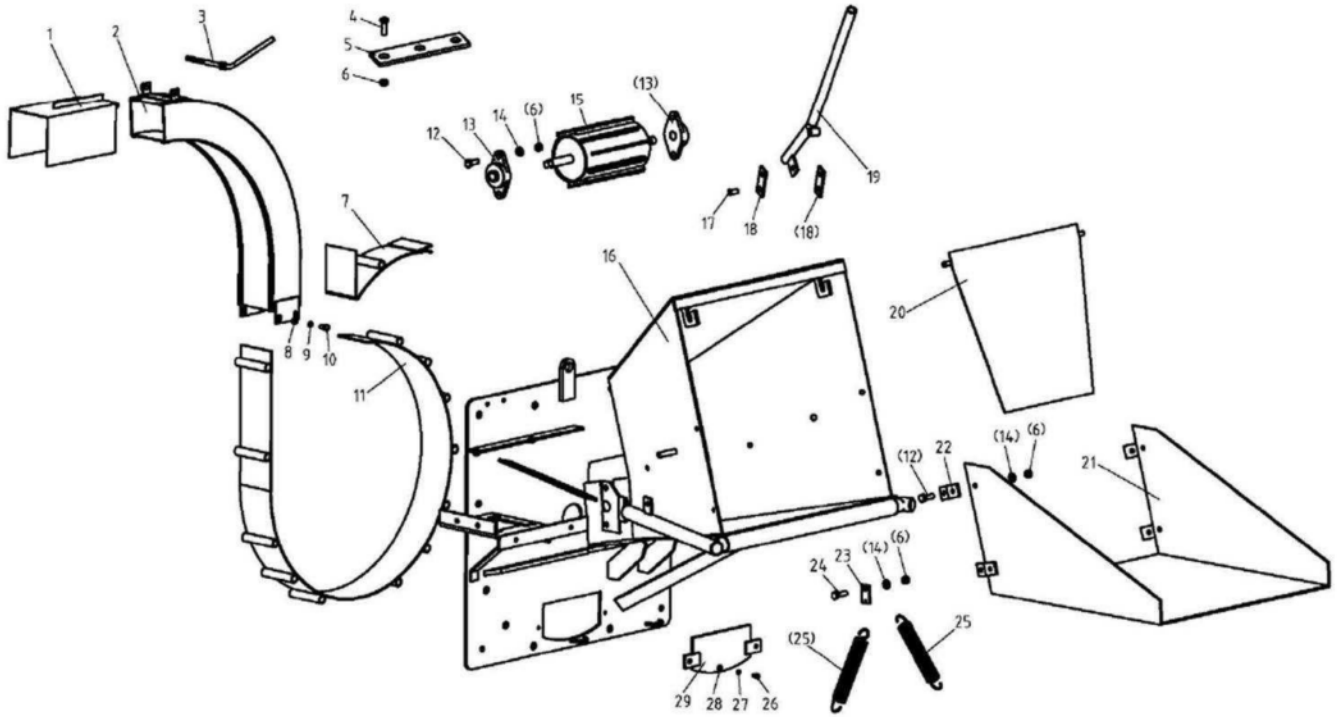


Illus. No.	Part No.	Part Name	Quantity
1	24PMF.02.001	Drive System Assembly	1
2	24PMF.01.001	Cutter and Feeder Assembly	1
3		'R' Pin	1
4	24PMF.03.112	Joint	1
5	GB6170-86	Nut M6	1
6	24PMF.03.141	Locking Line	1
7	24PMF.03.101	Pin Shaft	1
8	24PMF.03.011	Release Handle	1
9	GB 889-86	Locking Nut M6	2
10	GB97.1-85	Plain Washer 6	2
11	GB 5783-86	Bolt M6x16	2
12	GB5783-86	Bolt M8x20	10

Wood Chipper Assembly Parts List (cont.)

Illus. No.	Part No.	Part Name	Quantity
			Quantity
13	GB97.1-85	Plain Washer 8	14
14	GB889-86	Locking Nut M8	4 15
	24PMF.03.015	Roller Case	1
16	GB5783-86	Bolt M10x20	2 17
	GB97.1-85	Plain Washer 10	4
18	GB889-86	Locking Nut M10	2
19	GB93-87	Locking Washer 8	6
20	24PMF.03.016	Gearbox Cover	1
21	24PMF.03.014A	Transmission Shaft Assembly	1
22	GB6170-86	Nut M8	4 23
	GB5783-86	Bolt M8x50	2 24
	Q-IAKY01-91	Worm Reduction Gear WPR40:30:1 II	1
25	24PMF.03.111	Belt Pulley (Lower)	1
26	24PMF.03.105	Belt Pulley (Upper)	1
27	GB T1171-96	Belt A991	1
28	GB 889-86	Locking Nut M14x1.5	13
29	GB97.1-85	Plain Washer 14	26
30	GB5782-86	Bolt M14x135	13

Cutter and Feeder Assembly

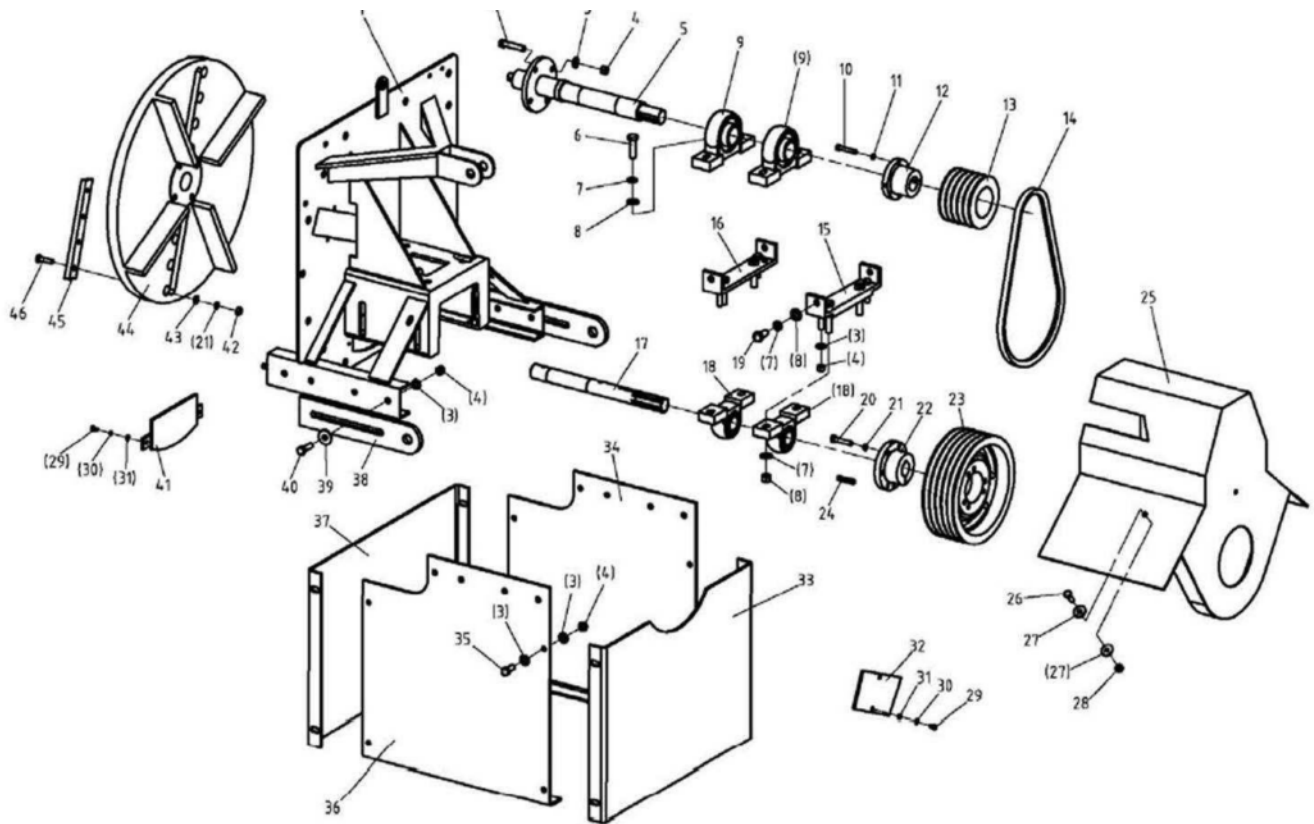


Illus. No.	Part No.	Part Name	Quantity
1	24PMF.01.014	Discharge Pipe Cover	1
2	24PMF.01.012	Discharge Pipe	1
3	24PMF.01.013	Tightening Handle	1
4	ISO-10642	Screw M10x35	3
5	24PMF.01.101	Chipper Bed Blade	1
6	GB 889-86	Locking Nut M10	17
7	24PMF.01.015	Flywheel Cover Panel	1
8	GB97.1-85	Plain Washer 8	4
9	GB93-87	Spring Washer 8	4
10	GB5783-86	Bolt M8x16	4
11	24PMF.01.016	Flywheel Cover	1
12	GB5783-86	Bolt M10x30	4
13	GB7810-87	Bearing L204	2
14	GB97.1-85	Plain Washer 10	14
15	24PMF.01.019	Blade Roller	1
16	24PMF.01.011	Material Feed Chute	1
17	24PMF.01.132	Pin Shaft	2

Cutter and Feeder Assembly Parts List (cont.)

Illus. No.	Part No.	Part Name	Quantity
			Quantity
18	24PMF.01.131	Connecting Bracket	2 19
	24PMF.01.024	Brake Handle	1 20
	24PMF.01.026	Baffle Board	1 21
	24PMF.01.018	Material Feed Tray	1 22
	24PMF.01.117	Connecting Plate	4 23
	24PMF.01.102	Spring Lug	2 24
	GB5783-86	Bolt M10x35	2
25	24PMF.01.103	Tension Spring	2 26
	GB5783-86	Bolt M6x12	2
27	GB93-87	Spring Washer 6	2 28
	GB97.1-85	Plain Washer 6	2 29
	24PMF.01.017	Clean-Out Door	1

Drive System Assembly



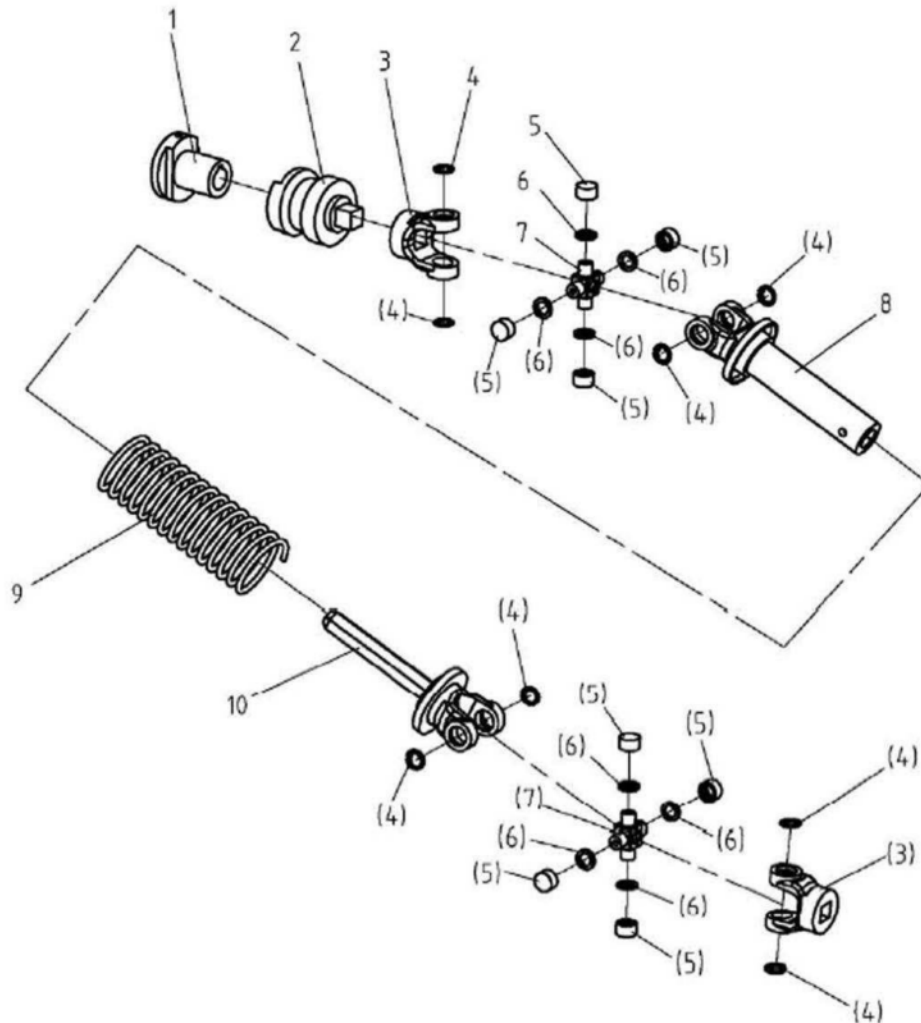
Drive System Assembly Parts List

1	24PMF.02.012	Support	1
2	GB5783-86	Bolt M12x60	4
3	GB97.1-85	Plain Washer 12	24
4	GB889-86	Locking Nut M12	16
5	24PMF.02.011	Supporting Shaft for Flywheel	1
6	GB 5786-86	Bolt M14x1.5x50	4
7	GB93-87	Locking Washer 14	12
8	GB97.1-85	Plain Washer 14	12
9	24PMF.02.138	Bearing Z209	2
10	GB5783-86	Bolt M8x50	6
11	GB93-87	Locking Washer 8	6
12	24PMF.02.105	Small Belt Pulley Hub	1
13	24PMF.02.104	Small Belt Pulley	1
14	GB 1171-74	Belt	1
15	24PMF.02.016	Bearing Seat Shim	1

Drive System Assembly Parts List (cont.)

16	24PMF.02.017	Bearing Seat Shim	1
17	24PMF.02.101A	Drive Shaft	1
18	24PMF.02.139	Bearing Z207	2
19	GB 5786-86	Bolt M14x1.5x30	4
20	GB5783-86	Bolt M10x50	6
21	GB93-87	Locking Washer 10	14
22	24PMF.02.102	Big Belt Pulley Hub	1
23	24PMF.02.103	Big Belt Pulley	1
24	GB 1096-79	Key C10x50	1
25	24PMF.02.013	Belt and Pulley Protective Cover	1
26	GB5783-86	Bolt M10x30	2
27	GB96-85	Washer 10	4
28	GB889-86	Locking nut M10	2
29	GB5783-86	Bolt M6x12	2
30	GB93-87	Spring Washer 6	4
31	GB97.1-85	Plain Washer 6	4
32	24PMF.02.118	Cover Panel	1
33	24PMF.02.112	Front Supporting Panel	1
34	24PMF.02.110	Left Supporting Panel	1
35	GB5783-86	Bolt M12x30	8
36	24PMF.02.109	Right Supporting Panel	1
37	24PMF.02.111	Rear Supporting Panel	1
38	24PMF.02.113	Lifting Board	2
39	GB96-85	Washer 12	4
40	GB5783-86	Bolt M12x40	4
41	24PMF.01.017	Cover Panel	1
42	GB6170-86	Nut M10	8
43	GB97.1-85	Plain Washer 10	8
44	24PMF.02.106	Flywheel	1
45	24PMF.02.107	Chipper Blade	2
46	GB 2673-86	Screw M10x35	8

Transmission Shaft Assembly



Illus. No.	Part No.	Part Name	Quantity
1	24PMF.03.107	Clutch Inner Claw	1
2	24PMF.03.108	Clutch Outer Claw	1
3	24PMF.03.134A	Drive Yoke	2
4	GB893.1-86	Circlip 15	8
5		Needle Bearing	8
6		Dustproof Washer	8
7	24PMF.03.135A	Universal Joint	2
8	24PMF.03.017A	Outer Drive Shaft	1
9	24PMF.03.109-1	Drive Shaft Spring	1
10	24PMF.03.018A	Inner Drive Shaft	1

Further Plugging Diagnostics

There are many variables that can cause the chipper to plug

The Input Speed From Tractor

The Vegetation Being Feed

Maintenance Needed

Mechanical Adjustment Needed

-If any modification has been made to chipper it may have affected the output process ~ Any Modifications Made?

-Verify Tractor PTO Speed Setting at 540 RPM

-Verify Tractor Engine Speed between 1800 ~ 2200 RPM

-Main Pulley Belt Deflection ~ Should be between 1/2" – 3/4" If Adjustment is needed follow steps as outlined in the manual or call support/service at the number below with any questions.

-Main Pulley swellable Sleeve Loose ~ Check the retaining bolts of swellable sleeve for tightness If Adjustment is needed follow the steps as outlined in the manual or call service/support at the number below with any questions.

-Verify Free Spin of Flywheel Before operations.

-Verify all cleanout covers have been re-installed before operations.

-Verify Chipping Blades are sharp ~ Dullness will affect the ability for the chipper to work efficiently.

-Verify the Bed Blade has a squared edge ~ Roundness will affect the ability for the chipper to work efficiently.

-Verify the Chipping Blade Spacing to the Bed Blade is within normal tolerance 0.10" ~ 0.30" = 1/10th" ~ 1/3"

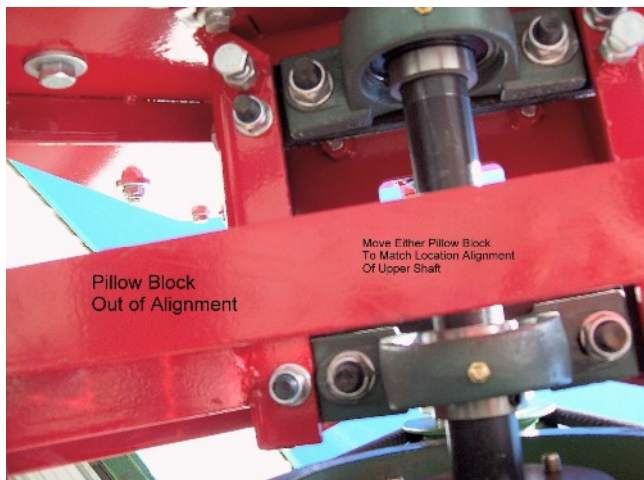
Troubleshooting/Adjusting for Belt Rollover

Remove PTO Driveshaft while working on the Wood Chipper

1. Verify there is no large quantity of paint in the grooves of both upper and lower pulley that will make contact with the belt as it rotates.
2. Verify the vertical alignment of the pulley's (Front to Back, acceptable tolerance is 1/4" to 3/16") Adjust by loosening the sets screws on the shaft of the lower pulley to adjust within tolerance to the upper pulley.
3. Verify the horizontal alignment of the pulley's (Left to Right, acceptable tolerance is 1/4") Adjust by loosening the pillow block retaining nuts and move as needed.
4. Verify Vertical and Horizontal Alignment Again
5. Attach new belts and rotate by hand to confirm they will not roll over during rotation. Use caution while doing this. Do Not use the power of the tractor to rotate while safety cover is removed.



Bad
Horizontal
Alignment



Bad Shaft Alignment

-During Operation be sure the Discharge Flap is adjust outward ~ If it is pointed directly down it will limit the ability for air flow and reduce the chippers efficiency.

-Do not force material into the chipper to increase its production rate ~ force feeding the chipper will cause it to plug.

-Vegetation should be clean of foreign debris and dry ~ dirt, grass, leaves etc... will plug the machine immediately Wet materials will plug the machine within moments.

-Vegetation should be branched material, if you have branched material with leaves or needles be sure you are feed other branches at same time as to mix the material as it is fed ~ wood chips are required to help move a small amount of leaf/needle thru the chipper at the same time.

-Concentrated amounts of leaf, needle, dirt, grass, etc will plug the chipper immediately.

-During operation if you notice the flywheel speed is reducing due to the amount of material being fed and your tractors output ability to chip and discharge the material ~ immediately raise the power feed roller by the handle until the flywheel speed has increased again at its normal speed.

Value-Leader Brand LIMITED WARRANTY

Unless otherwise stated on purchase invoice, Betst Products, Ilc. warrants to original Purchaser that Value-Leader products are free from major defects in material under normal use and service for a period of Two (2) Years from the date the product is purchased or shipped, whichever is later. Commercial use 180 days. Use at address that is not yours, is considered commercial use. Consumable, Expendable, Wear Items (Examples: Rubber & plastic parts, hydraulic hoses, belts, tires, cables, blades, tines, wedges, teeth, tips, chains, pins, brushes, filters, etc.) and cracked hydraulic pumps, bent or broken cylinder rods are not covered under this warranty. Warranty does not cover items that have been modified, damaged by abuse or usage not in accordance with design or maintenance.

Betst Products, Ilc. obligation under this warranty is to repair or replace defective product upon approval by; Betst Products, Ilc., 83371 Melton Rd. N., Creswell OR 97426 that Warranty Claim is Valid. Product shall be returned upon request of Betst Products, Ilc. Transportation charges to be prepaid by buyer. **Gasoline or diesel engines used to powered Value-Leader products are covered by the warranty of the appropriate engine manufacture and Purchaser must look to the engine manufacture for all issues relating to engine operation.**

Betst Products, Ilc. assumes no responsibility for outside labor.

PERMISSIBLE BY APPLICABLE LAW, BETST PRODUCTS, LLC. HEREBY DISCLAIMS ALL WARRANTIES OF ANY KIND, EITHER EXPRESS OR IMPLIED, INCLUDING, ANY IMPLIED WARRANTIES WITH RESPECT TO THE PRODUCT PURCHASED, WITHOUT LIMITING THE GENERALITY OF THE FOREGOING, BETST PRODUCTS, LLC. HEREBY EXPRESSLY DISCLAIMS ALL LIABILITY FOR PRODUCT DEFECT OR FAILURE, CLAIMS THAT ARE DUE TO NORMAL WEAR, PRODUCT MISUSE, ABUSE, PRODUCT MODIFICATION, IMPROPER PRODUCT SELECTION, NON-COMPLIANCE WITH ANY CODES, OR MISAPPROPRIATION. • BETST PRODUCTS, LLC. MAKES NO WARRANTIES TO THOSE DEFINED AS "CONSUMERS" IN THE MAGNUSON-MOSS WARRANTY-FEDERAL TRADE COMMISSION IMPROVEMENTS ACT. THE FOREGOING EXCLUSIONS OF IMPLIED WARRANTIES DO NOT APPLY TO THE EXTENT PROHIBITED BY LAW. PLEASE REFER TO YOUR LOCAL LAWS FOR ANY SUCH PROHIBITIONS

THERE SHALL BE NO LIABILITY FOR PRODUCT LIABILITY OR LIABILITY ON THE PART OF BETST PRODUCTS, LLC. FOR ANY GENERAL, SPECIAL OR CONSEQUENTIAL DAMAGES ARISING OUT OF THE SALE OR USE OF ANY PRODUCTS SOLD BY BETST PRODUCTS, LLC OR AN AGENT THEREOF. BETST PRODUCTS, LLC. MAKES NO WARRANTIES, EXPRESS OR IMPLIED, (INCLUDING, BUT NOT LIMITED TO, ANY WARRANTY OF MERCHANTABILITY OR FITNESS OF THE PRODUCTS FOR ANY PURPOSE) WITH RESPECT TO THE PRODUCTS COVERED BY THIS AGREEMENT EXCEPT AS IN THIS PARAGRAPH OTHERWISE EXPRESSLY PROVIDED.

THIS IS THE SOLE AND ONLY WARRANTY OF Value-Leader PRODUCTS. NO OTHER WARRANTY IS APPLICABLE, EITHER EXPRESSED OR IMPLIED, IN FACT OR BY LAW,

This warranty shall not be interpreted to render Betst Products, Ilc., or any authorized agent liable for injury or damages of any kind or nature, direct, consequential, or contingent, to person or property.

The sole and only remedy in regard to any defective products shall be the repair or replacement thereof as herein provided. Betst Products, Ilc., agent(s) of Betst Products, Ilc. shall not be liable for any consequential, special, incidental or punitive damages resulting from or caused by any such defects.

Betst Products, Ilc. reserves the right to make improvements in design or changes in specifications at any time, without incurring any obligations to owners of units previously sold.

No one is authorized to alter, modify, or enlarge this warranty nor the exclusions, limitations, and reservation thereof.

WARRANTY VOID IF REGISTRATION IS NOT RECEIVED OR RECORDED ONLINE WITHIN 30 DAYS OF PURCHASE DATE OR SHIP DATE, WHICHEVER IS LATER.

VL REGISTRATION

Item _____ Model # _____ Purchase Date ____/____/____

Purchased From: _____ Gift Inv#/Order# _____

Owner Name: _____ Serial # (if Applicable) _____

Owner Address: _____

City: _____ County: _____ ST: _____ Zip Code: _____

Phone: _____ Email: _____

Acceptance of responsibility:

I (Purchaser) have read operators manual and Limited Warranty or someone has read/and explained all instructions to me. I understand this warranty does not cover any labor and that all disputes will be settled by binding arbitration. Binding arbitration is conducted by the Better Business Bureau (BBB) located at 4004 SW Kruse Way Place Ste 375 Lake Oswego OR 97035 or the current BBB location closest to Betst Products, I acknowledge my Limited Warranty is void if any attempt to repair or replace defective parts has been made by unauthorized personnel. I acknowledge receipt of my Operators Manual and have read the Safe Operation Section. I acknowledge understanding maintenance and safe operation requirements, item specifications, operation, controls, and storage requirements. **I understand that I alone am responsible for proper maintenance, care and safe operation of this Value-Leader item.**

I (Purchaser) agree that persons not familiar with the operation of this item should not be allowed to use it. Children especially should not operate or be near Power Products when in use. ANYONE OPERATING VALUE-LEADER PRODUCTS SHOULD HAVE READ OPERATIONS MANUALS AND SAFETY MANUALS.

Owners Signature: x _____ **Date:** ____/____/____

You must sign this warranty and mail or fax copy to Betst Products, 83371 Melton Rd N.#3, Creswell OR 97426. If you prefer you may complete your registration on line at www.betstco.com. This warranty is not effective unless the Purchaser completes Registration and Warranty Form within 30 days of purchase or ship date whichever is later.

Fax to 1-904-216-2059 Email cservice@betstco.com

NOTE: We may refuse warranty of any kind unless Betst Product, llc., receives a completed, legible and signed warranty registration. It is the responsibility of the purchaser to assure that registration document is received by Betst Products, llc..

Fax to 1-904-216-2059 Email cservice@betstco.com

Revised 10-16-13

2 YEAR EXTENDED WARRANTY & REGISTRATION Value Leader Implement

Branded Products

2 YEAR EXTENDED WARRANTY

2 Year Extended Warranty amends to original Recorded Warranty Registration the time period of described coverage. Extended Warranty does not apply to Consumable and Expendable Items as described in Product Warranty Registration.

This Amendment does not affect any other part of recorded Warranty Registration or Policy.

No one is authorized to alter, modify, or enlarge this Amendment to original recorded warranty registration.

EXTENDED REGISTRATION & PAYMENT MUST BE RECEIVED WITHIN 30 DAYS OF PURCHASE DATE

EXTENDED WARRANTY REGISTRATION

Product & Model # : _____

Serial #: _____

Owner Name: _____

Betst Products Invoice # _____

Acceptance of responsibility:

I (Purchaser) have Read and understand the Extended Warranty or someone has read/and explained all the above to me. I understand this extended warranty does not cover any labor. I have filed my Original Warranty Registration and fully understand my requirements. **I understand that I alone am responsible for proper maintenance, care and safe operation of this tractor implement.**

I (purchaser) also understand that persons not familiar with the operation of this equipment should not be allowed to use it. Children especially should not operate or be near equipment. ANYONE OPERATING EQUIPMENT SHOULD HAVE READ ALL EQUIPMENT OPERATIONS MANUALS AND SAFETY MANUALS..

Owners Signature: x _____

Date: _____

You must sign this extended warranty and Fax to 1-305-397-1780 or mail copy to Betst Products, 83371 Melton Rd N.#3, Creswell OR 97426. This extended warranty is not effective unless the Purchaser faxes or mails this Registration Form within 30 days of purchase. NOTE: The Manufacturer may refuse warranty of any kind unless Betst Products receives a completed, legible and signed extended warranty registration. It is the responsibility of the purchaser to assure that this registration document is received by Betst Products.

To Make Payment for Extended Warranty Call: 1-877-876-7895