



# FHM

**FARMER-HELPER  
MACHINERY COMPANY**

## TL SERIES ROTARY TILLER



## OPERATION & PARTS MANUAL

**Please read these instructions carefully before using! Always grease all fittings and be sure to always check and fill with oil before operating! Retain this manual for future reference. Uses Approximately 1 quart 80-90 gear lube**

**[www.Betstco.com](http://www.Betstco.com)**

Toll Free: 877-876-7895, E-mail: [sales@betstco.com](mailto:sales@betstco.com)  
83371 Melton Rd, Creswell OR 97426



**RUGGED LABOR SAVING EQUIPMENT SINCE 1995**

*Specifications subject to change without notice.*

## WARNINGS

All implements with moving parts are potentially hazardous. There is no substitute for a cautious, safe-minded operator who recognizes the potential hazards and follows reasonable safety practices. The manufacturer has designed this implement to be used with all its safety equipment properly attached to minimize the chance of accidents.

### BEFORE YOU START!!

Read the safety messages on the implement and shown in your manual. Observe the rules of safety and common sense!

**A SAFETY ALERT SYMBOL IDENTIFIES IMPORTANT SAFETY WARNING MESSAGES. CAREFULLY READ EACH WARNING MESSAGE THAT FOLLOWS. FAILURE TO UNDERSTAND AND OBEY A SAFETY WARNING, OR RECOGNIZE A SAFETY HAZARD, COULD RESULT IN AN INJURY OR DEATH TO YOU OR OTHERS AROUND YOU. THE OPERATOR IS ULTIMATELY RESPONSIBLE FOR THE SAFETY OF HIMSELF, AS WELL AS OTHERS, IN THE OPERATING AREA OF THE ROTARY TILLER. UNDERSTAND SIGNAL WORDS**

**DANGER** and **WARNING** safety signs are located near the specific hazard.

**CAUTION** safety signs list general precautions. The safety-alert symbol is also used in this manual to call attention to safety messages.

### *Important Safety Information!*

Working with unfamiliar equipment can lead to careless injuries. Read this manual, and the manual for your tractor, before assembly or operating, to acquaint yourself with the machines. It is the implement owner's responsibility, if this machine is used by any person other than yourself, is loaned or rented, to make certain that the operator, prior to operating:

1. Reads and understands the operator's manuals.
2. Is instructed in safe and proper use.
3. The use of this equipment is subject to certain hazards which cannot be protected against by mechanical means or product design.
4. All operators of this equipment must read and understand this entire manual, paying particular attention to safety and operating instructions, prior to using. If there is something in this manual you do not understand, ask your supervisor, or your dealer, to explain it to you.

Most accidents occur because of neglect or carelessness. Keep all helpers and bystanders twenty-five feet (25') from an operating rotary tiller. Only properly trained people should operate this machine. It is recommended the tractor be equipped with a Rollover Protection System (ROPS) and a seat belt that is used. Always stop the tractor, set brake, shut off the tractor engine and remove the tractor key, and lower implement to the ground before dismounting tractor. Never leave equipment unattended with the tractor running.

Please remember it is important that you read and heed the safety signs on the rotary tiller, and the safety rules set forth. Clean or replace all safety signs if they cannot be clearly read and understood. They are there for your safety as well as the safety of others. The safe use of this machine is strictly up to you, the operator.

## **SAFETY PRECAUTIONS**

**MOST ACCIDENTS OCCUR BECAUSE OF NEGLIGENCE OR CARELESSNESS.  
AVOID NEEDLESS ACCIDENTS BY FOLLOWING ALL OF THE SAFETY  
PRECAUTIONS LISTED BELOW.**

- Machinery should be operated only by those who are responsible and are authorized to do so. Stop the engine, lower all equipment, lock the brakes, and remove the ignition key before dis-mounting from the tractor.
- Never stand between tractor and implement while tractor is being backed to hitch. Loose fitting clothing should not be worn, to avoid catching on various parts.
- Detach implement in area where children normally do not play.
- When performing adjustments or maintenance on an implement, first lower it to the ground or block it securely at a workable height. Only a qualified operator should be permitted on tractor when in operation; no riders allowed. Make certain everyone is in the clear before starting tractor or raising or lowering equipment. Operate the tractor and implement only while seated in the driver's seat. Reduce speed when transporting mounted implements to avoid bouncing and momentary loss of steering control.
- A heavy load can cause instability of the tractor.
- Use extreme care during road travel. Slow down on turns and watch out for bumps. Tractor may need front counter-weights to counter-balance the weight of the implement.
- Reduce speed on hillsides or curves so there is no danger of tipping.
- Avoid driving too close to the edge of ditches or creeks.
- Do not transport implement on public roads without reflectors and slow moving vehicle emblem in daylight and with approved warning lights at night and other periods of poor visibility.
- Due to the width of some implements, use extra caution on highways, farm roads, and when approaching gates.
- Always be sure the implement is in the proper position for transport.
- Keep alert and watch the front as well as the rear when working with the implement.

### ***WHEN ORDERING REPAIR PARTS, ALWAYS GIVE THE FOLLOWING INFORMATION:***

1. PART NUMBER
2. PART DESCRIPTION
3. MODEL NUMBER
4. NAME OF ITEM

### **Safety Information**

- All equipment is potentially hazardous. There is no substitute for a cautious, safe-minded operator who recognizes potential hazards and follows reasonable safety practices.
- When the use of hand tools is required to perform any part of assembly, installation, adjustment, maintaining, repairing, removal, or moving the implement, be sure the tools used are designed and recommended by the tool manufacturer for that specific task.
- Personal protection equipment including safety glasses, safety shoes, and gloves are recommended during assembly, installation, operation, adjustment, maintaining, repairing, removal, or moving the rotary tiller.
- Always use two people to handle heavy, unwieldy components during assembly, installation, removal, or moving the rotary tiller.
- Never place any part of your body where it would be in danger if movement should occur during assembly, installation, operation, maintaining, repairing, removal, or moving the implement.
- Never place yourself between the tractor and implement while implement is in operation.
- Do not work under a raised implement unless it is securely blocked or held in position. Do not depend on the tractor hydraulic system to hold the implement in place.
- A heavy load can cause instability of the tractor. Use extreme care during travel. Slow down on turns and watch out for bumps. The tractor may need front counter-weights to counter-balance the weight of the implement.
- Never use alcoholic beverages or drugs which can hinder alertness or coordination while operating this equipment. Consult your doctor about operating this machine while taking prescription medications.
- Do not allow others to ride on the tractor with an operator. Riders are subject to injury such as being struck by foreign objects or being thrown off. Riders obstruct the operator's view resulting in unsafe operation. Never allow anyone to ride on the implement!
- Before you operate the rotary tiller, check over all pins, bolts and connections to be sure all are securely in place. Replace any damaged or worn parts immediately.
- Do not allow anyone who is not familiar with the safety rules and operation instructions to use this rotary tiller. Never allow children to operate or be around equipment.
- Use stabilizer bars, adjustable sway chains, or sway blocks on your tractor lift arms to keep the rotary tiller from swinging side to side. Adjust as tightly as practical for best performance.
- Keep alert and watch the front as well as the rear when working with the implement.
- When maneuvering close to buildings or passing through narrow areas, be sure to allow sufficient clearance for the implement.
- Do not operate close to ditches or creeks. Slow down when operating over rough ground.

- Always be sure the implement is in the fully raised position when in transport.
- When adjusting the assembly, be sure that your feet are never under the rotary tiller.
- Use extreme caution when backfilling deep holes or trenches.
- Be careful to avoid catching the rotary tiller on stumps or other immovable objects.
- Use care when working on slopes.
- Avoid excessive speed during operation.
- Make adjustments only when the implement is attached to the tractor.
- Do not use the rotary tiller in a reverse position, use extra care. Do not ram rotary tiller into piles of dirt. Tractor lift arms and the rotary tiller are not built to take high impact loads in this position. Ramming backwards can also dislodge operator from seat and/or tractor controls, resulting in possible serious injury or death.
- Always ease the tractor into the load. It may be necessary to reposition and take less "bite" on the material to move it safely.
- Watch for and avoid hidden obstructions, i.e., buried pipes, rocks, concrete piers, uneven concrete slabs, stumps, etc., when operating.

<b>Farmer-Helper Series Chain Driven Rotary Tillers</b>					
<b>SPEC</b>	<b>FH-TL085</b>	<b>FH-TL095</b>	<b>FH-TL105</b>	<b>FH-TL125</b>	<b>FH-TL135</b>
<b>Standard Tine Rotation</b>	Yes	Yes	Yes	Yes	Yes
<b>Working Width</b>	33"	37"	41"	48"	53"
<b>Overall Width</b>	39"	43"	47"	54"	60"
<b>Min.- Max. HP</b>	12 HP - 40 HP	14 HP - 40 HP	16 HP - 40 HP	18 HP - 40 HP	20 HP - 40 HP
<b>3 Point Hitch</b>	Cat I	Cat I	Cat I	Cat I	Cat I
<b>Offsetable Distance from Center</b>	11"	12"	14"	16"	18"
<b>Gear Box Maximum PTO HP</b>	35 HP	35 HP	35 HP	35 HP	35 HP
<b>Number of Flanges</b>	4	4	5	7	7
<b>Number of L shaped Tines</b>	16	16	20	28	28
<b>Drive Type</b>	Auto Adjusting #80 Chain	Auto Adjusting #80 Chain	Auto Adjusting #80 Chain	Auto Adjusting #80 Chain	Auto Adjusting #80 Chain
<b>Double Walled Housing</b>	1/4"	1/4"	1/4"	1/4"	1/4"
<b>Rotor Swing Dia.</b>	14"	14"	14"	14"	14"
<b>Adjustable Tilling Depth</b>	2" - 6"	2" - 6"	2" - 6"	2" - 6"	2" - 6"
<b>PTO Slip Clutch</b>	Yes	Yes	Yes	Yes	Yes
<b>540 rpm PTO Drive Line</b>	Series 4 1-3/8" 6 Spline Quick Connect Slip Clutch	Series 4 1-3/8" 6 Spline Quick Connect Slip Clutch	Series 4 1-3/8" 6 Spline Quick Connect Slip Clutch	Series 4 1-3/8" 6 Spline Quick Connect Slip Clutch	Series 4 1-3/8" 6 Spline Quick Connect Slip Clutch
<b>Warranty</b>	2 Year	2 Year	2 Year	2 Year	2 Year
<b>Weight</b>	310 lbs	330 lbs	350 lbs	400 lbs	430 lbs
<b>Crated Weight</b>	325 lbs	350 lbs	375 lbs	425 lbs	460 lbs



## **INSTRUCTIONS**

### **TRACTOR REQUIREMENTS AND PREPARATION**

The Rotary tiller will fit most Category 1 tractors equipped with a standard 3-point hitch. The pins need to be installed to the inside of the 3-point frame for use with Category 1 tractors.

The Rotary tiller is for use on Category 1 tractors up to 45 horsepower in size.

1. Check the tractor's 3-point hydraulic lift system.
2. It should operate up and down smoothly and hold its position when set.
3. Refer to your tractor owner's manual or dealer for any adjustments necessary to put the 3-point hydraulic lift system in good working order.
4. Tractor should be equipped with stabilizer bars, adjustable sway chains, or sway blocks to keep the implement from swinging side to side.
5. Smaller size tractors may need front counter weights to counter-balance the weight of the implement.
6. It is recommended that the tractor be equipped with a Rollover Protection System (ROPS) and a seat belt that is used.

### **ASSEMBLY AND MOUNTING (See Pictures Below)**

1. Attach the 3Pt Frame Plate, to the Supporting Plate.
2. DO NOT tighten hardware.
3. Attach the Rear 3Pt Frame Plate.
4. A-frame should be positioned to the frame now tighten the hardware.
5. Fill Gear Box and Side Chain Case with 80-90 Gear Oil.
6. Grease end shaft of tiller and PTO U-Joints with Lithium Based grease
7. Attach Rear float chain.
8. Attach rotary tiller hitch frame to tractor 3-point hitch using a 3A lynch (Cat 1) top link pin and lynch pins.
9. Attach PTO Driveline
10. Adjust Offset to desired position, do this while tiller is lifted slightly off ground.
11. Your Rear Mounted tiller is now assembled and mounted on your tractor. It is ready to go to work for you.
12. Do not attach storage stand until you have completed your work and ready to store the tiller.

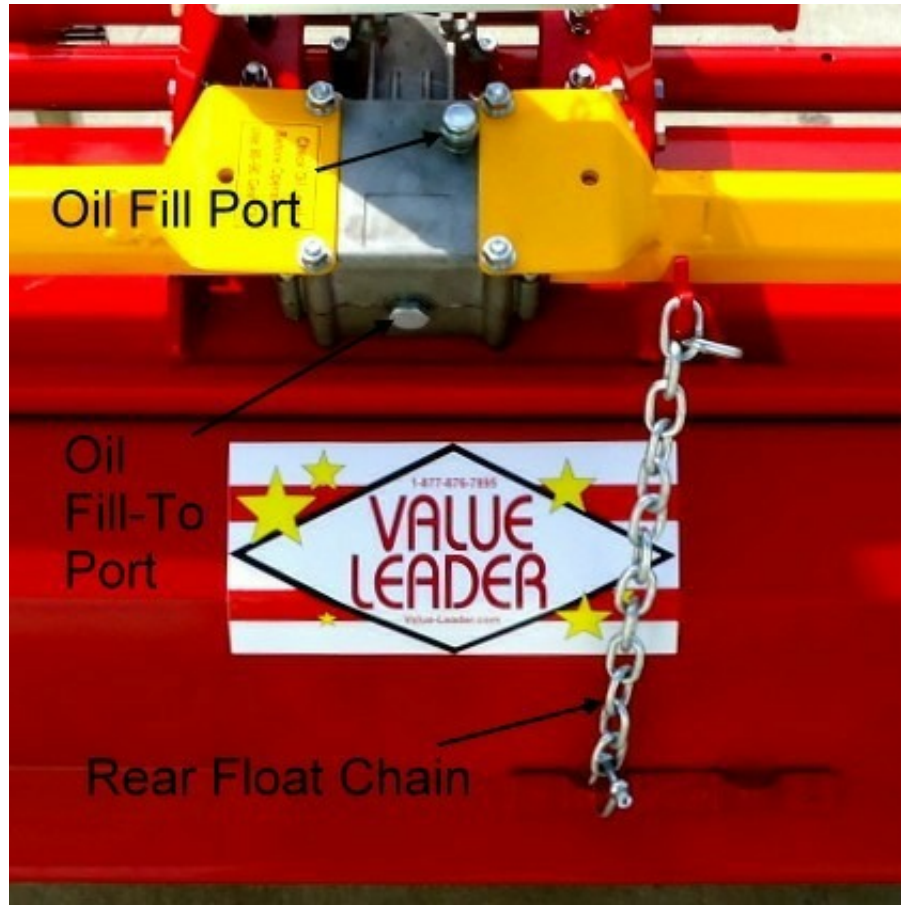
**NOTE:** Always use the tractor anti-sway bars, blocks, or chains to prevent tiller side-sway.

### **CAUTION!**

Be sure your tractor is in good condition. Read all the safety precautions and make sure all tractor operators are familiar with the safety rules of operation. Please work, drive, play, and live each day with care and concern for your safety and that of your family and fellow citizens.



Mounting Plates, Top Link Pin, Sleeve & Bolt, PTO Storage Hook

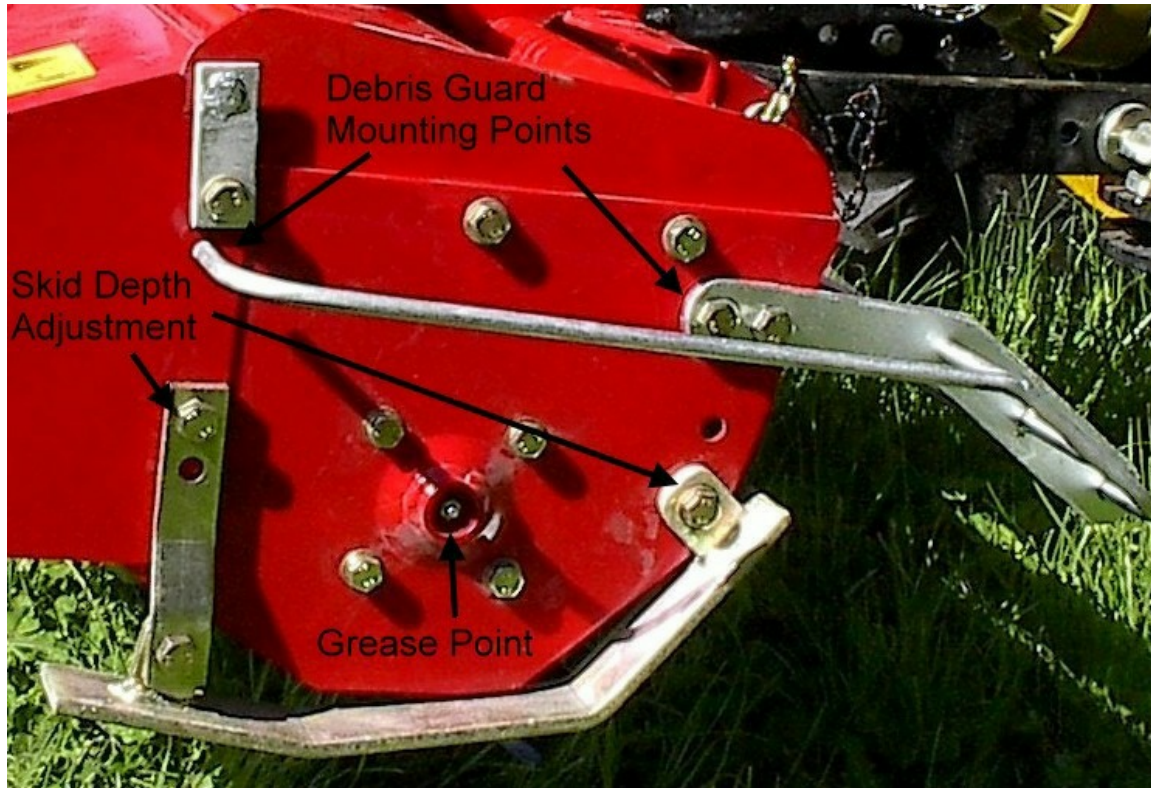


Gear Box Oil Ports & Rear Float Chain





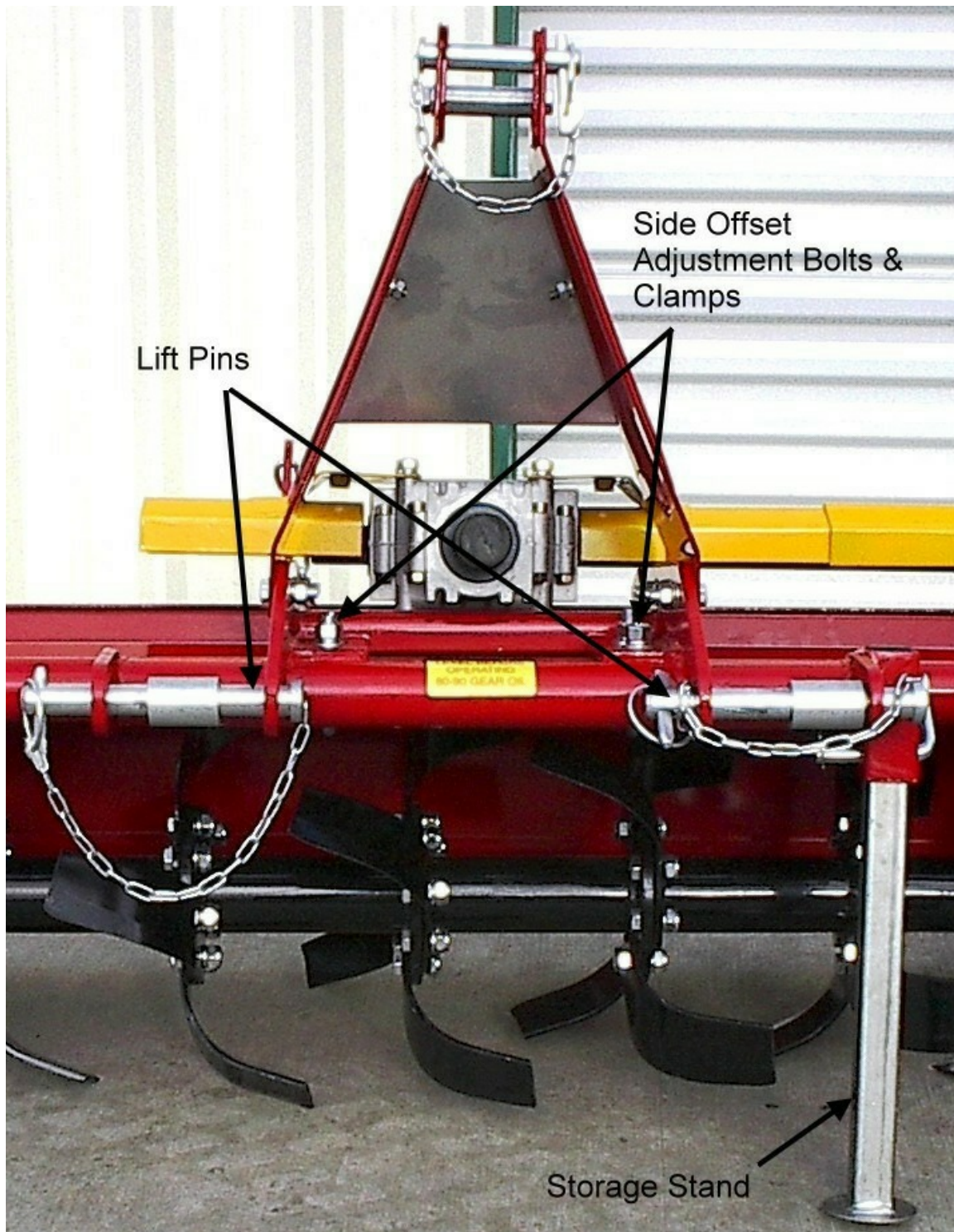
Chain Case Oil Ports & Tensionor







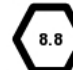

Side Grease Point and Skid Depth Adjustment

Debris Guard is no Longer available for this product

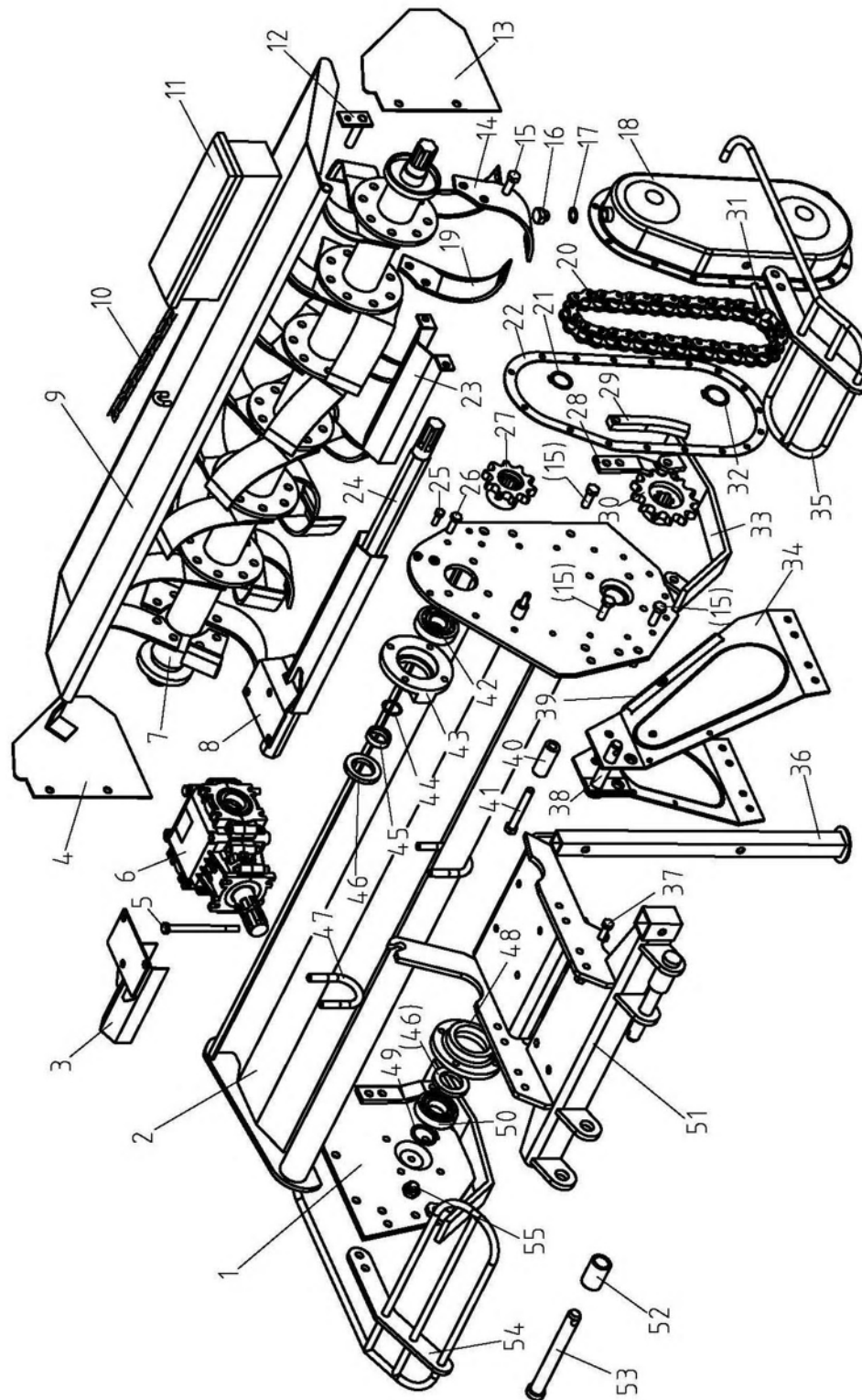




Offset Adjustment Bolts & Clamps, Lift Pins, and Removable Storage  
Stand

Torque Values Chart													
	Bolt Head Identification							Bolt Head Identification					
	 Grade 2		 Grade 5		 Grade 8			 Class 5.8		 Class 8.8		 Class 10.9	
in-tpi <sup>1</sup>	N · m	ft-lb <sup>3</sup>	N · m	ft-lb	N · m	ft-lb	mm x pitch	N · m	ft-lb	N · m	ft-lb	N · m	ft-lb
1/4" - 20	7.4	5.6	11	8	16	12	M 5 X 0.8	4	3	6	5	9	7
1/4" - 28	8.5	6	13	10	18	14	M 6 X 1	7	5	11	8	15	11
5/16" - 18	15	11	24	17	33	25	M 8 X 1.25	17	12	26	19	36	27
5/16" - 24	17	13	26	19	37	27	M 8 X 1	18	13	28	21	39	29
3/8" - 16	27	20	42	31	59	44	M10 X 1.5	33	24	52	39	72	53
3/8" - 24	31	22	47	35	67	49	M10 X 0.75	39	29	61	45	85	62
7/16" - 14	43	32	67	49	95	70	M12 X 1.75	58	42	91	67	125	93
7/16" - 20	49	36	75	55	105	78	M12 X 1.5	60	44	95	70	130	97
1/2" - 13	66	49	105	76	145	105	M12 X 1	90	66	105	77	145	105
1/2" - 20	75	55	115	85	165	120	M14 X 2	92	68	145	105	200	150
9/16" - 12	95	70	150	110	210	155	M14 X 1.5	99	73	155	115	215	160
9/16" - 18	105	79	165	120	235	170	M16 X 2	145	105	225	165	315	230
5/8" - 11	130	97	205	150	285	210	M16 X 1.5	155	115	240	180	335	245
5/8" - 18	150	110	230	170	325	240	M18 X 2.5	195	145	310	230	405	300
3/4" - 10	235	170	360	265	510	375	M18 X 1.5	220	165	350	260	485	355
3/4" - 16	260	190	405	295	570	420	M20 X 2.5	280	205	440	325	610	450
7/8" - 9	225	165	585	430	820	605	M20 X 1.5	310	230	650	480	900	665
7/8" - 14	250	185	640	475	905	670	M24 X 3	480	355	760	560	1050	780
1" - 8	340	250	875	645	1230	910	M24 X 2	525	390	830	610	1150	845
1" - 12	370	275	955	705	1350	995	M30 X 3.5	960	705	1510	1120	2100	1550
1-1/8" - 7	480	355	1080	795	1750	1290	M30 X 2	1060	785	1680	1240	2320	1710
1 1/8" - 12	540	395	1210	890	1960	1440	M36 X 3.5	1730	1270	2650	1950	3660	2700
1 1/4" - 7	680	500	1520	1120	2460	1820	M36 X 2	1880	1380	2960	2190	4100	3220
1 1/4" - 12	750	555	1680	1240	2730	2010	<div><sup>1</sup> in-tpi = nominal thread diameter in inches-threads per in.</div> <div><sup>2</sup> N · m = newton-meters</div> <div><sup>3</sup> ft-lb = foot pounds</div> <div><sup>4</sup> mm x pitch = nominal thread diameter in millimeters x thread pitch</div>						
1 3/8" - 6	890	655	1990	1470	3230	2380							
1 3/8" - 12	1010	745	2270	1670	3680	2710							
1 1/2" - 6	1180	870	2640	1950	4290	3160							
1 1/2" - 12	1330	980	2970	2190	4820	3560							
Torque tolerance + 0%, -15% of torquing values. Unless otherwise specified use torque values listed above.													

# Rotary Tiller Assembly



### TL Rotary Tiller Assembly

NO.	Part NO.	Name & Specifications	Quantity	Remark
1	1GQ-125.11.102	Right supporting plate	1	
2	1GQ-125.11.021	Rotary Tiller case weldment	1	
3	1GQ-125.11.015	Transmission shaft cover (R)	1	
4	1GQ-125.11.154	Protecting plate ( R )	1	
5	1GQ-125.11.103	Bolt M10×135	4	
6	XH41100101	Gear box Assembly	1	
7	TL125-90A	Shaft for blade	1	
8	1GQ-125.11.016	Transmission shaft cover	1	
9	1GQ-125.11.020	Rear protecting plate weldment	1	
10		Chains (16 nodes)	1	
		N.A.		
12	1GQ-125.11.014	Fixing pole weldment	2	



13	1GQ-125.11.153	Protecting plate ( L )	1
14	1GQ.11.127	Blade ( R )	14
15	GB5783-86	Bolt M12×35	58
16	CBW-00.112	Oil plug	2
17	CBW-00.103	Plain washer	2
18	1GQ-125.11.018	Chain box	1
19	1GQ.11.128	Blade ( L )	14
20	1GQ-125.11.017	Transmission Chains 16Ax17	1
21	GB894.1-86	Circlip 30	1
22	1GQ-125.11.125	Wood gasket	1
23	1GQ-125.11.023	Transmission shaft cover	1
24	1GQ-125.11.107	Transmission shaft	1
25	GB5783-86	Bolt M8×25	17

### TL Rotary Tiller Assembly

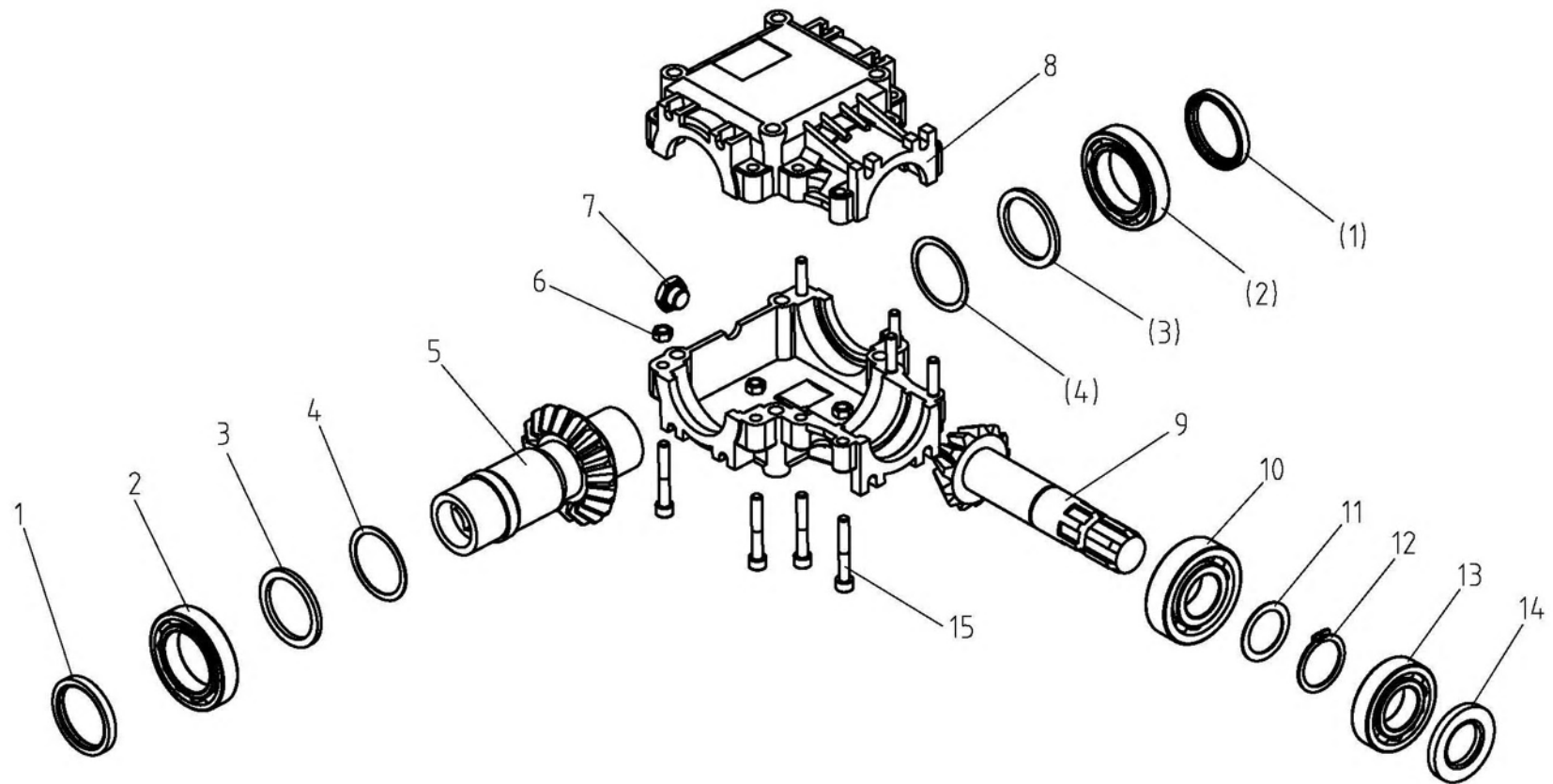
NO.	Part NO.	Name & Specifications	Quantity	Remark
26	GB 5783-86	Bolt M10×30	12	
27	1GQ-125.11.123	Drive chain wheel	1	
28	1GQ-125.11.152	Adjusting plate	2	
29	1GQ-125.11.126	Adjusting lath	1	
30	1GQ-125.11.124	Driven chain wheel	1	
31	GB5783-86	Bolt M14×65	1	
32	GB894.1-86	Circlip 34	1	
33	1GQ-125.11.019	Track plate weldment	2	
34	1GQ-125.11.011	Lift plate weldment	1	
		N.A.		
36	1GQ-125.11.022	The brace weldment	1	
37	GB 5783-86	Bolt M10×30	8	
38	EF100.00.019	Pin shaft weldment	1	

39	1GQ-125.11.110	Protecting plate	1
40	1GQ-125.11.158	Sleeve	1
41	GB5783-86	Bolt M12×80	1
42	GB/T 276-94	Bearing 6306	1
43	1GQ-125.11.109	Bearing seat	1
44	GB 3451.1 - 82	O-ring 28x2.65	1
45	1GQ-125.11.108	Transmission shaft sleeve	1
46	GB9877.1-88	Seal ring FB 40x62x8	3
47	1GQ-125.11.101	U bolt	2
48	1GQ-125.11.104	Bearing seat	1
49	GB894.1-86	Circlip 35	1
50	GB/T 276-94	Bearing 6207	1

### TL Rotary Tiller Assembly

NO.	Part NO.	Name & Specifications	Quantity	Remark
51	1GQ-125.11.012	Gear box supporting	1	
52	EF100.00.106	Pin sleeve	1	
53	EF100.00.139	Lift pin shaft	1	
		N.A.		
55	GB11152-89	Grease nipple M10x1	1	

## Gear box Assembly



### TL Gear Box Assembly

NO.	Part NO.	Name & Specifications	Quantity	Remark
1	00556263	Oil seal	2	
2	00557126	Bearing	2	
3	41100102	Gasket	2	
4	41100106	Adjusting gasket	2	
5	41100105	Gear shaft	1	
6	00553498	Nut	8	
7	00552899	Oil plug ( with O ring )	1	
8	41100108	Gear box case	2	
9	41100109	Gear shaft	1	
10	00557180	Bearing	1	
11	41100107	Adjusting gasket	1	
12	00555204	Circlip for shaft	1	



13	00557150	Bearing	1
14	00556105	Oil seal	1
15	00552506	Hex head bolt	8



**FHM**  
FARMER-HELPER  
MACHINERY COMPANY

## Parts Request Form

Fax to 541-895-2756 or E-mail  
parts@betstco.com

Name: \_\_\_\_\_

Address: \_\_\_\_\_

City State Zip: \_\_\_\_\_

Phone: \_\_\_\_\_

E-mail: \_\_\_\_\_

Model Number: \_\_\_\_\_

Serial Number: \_\_\_\_\_

Purchased From: \_\_\_\_\_

Purchase Date: \_\_\_\_\_

Item No.	Description	Qty	Price	Amount

Comments:

## Farmer Helper Machinery Brand LIMITED WARRANTY

FARMER HELPER MACHINERY CO. LTD. warrants to original Purchaser that FARMER HELPER MACHINERY CO. LTD. products are free from major defects in material under normal use and service for a period of Two (2) Years from the date the product is purchased or shipped, whichever is later. Commercial use 180 days. Use at address that is not yours, is considered commercial use. Consumable, Expendable, Wear Items (Examples: Rubber & plastic parts, hydraulic hoses, belts, tires, cables, blades, tines, wedges, teeth, tips, chains, pins, brushes, filters, etc.) and cracked hydraulic pumps, bent or broken cylinder rods are not covered under this warranty. Warranty does not cover items that have been modified, damaged by abuse or usage not in accordance with design or maintenance.

FARMER HELPER MACHINERY CO. LTD.'s obligation under this warranty is to repair or replace defective product. upon determination by; Betst Products, llc., 83371 Melton Rd. N., Creswell OR 97426 that Warranty Claim is Valid. Product shall be returned upon request of Betst Products, llc. Transportation charges to be prepaid by buyer. **Gasoline or diesel engines used to powered FARMER HELPER MACHINERY CO. LTD. products are covered by the warranty of the appropriate engine manufacture and Purchaser must look to the engine manufacture for all issues relating to engine operation.**

***Farmer-Helper Machinery nor Betst Products, llc. assumes any responsibility for labor.***

PERMISSIBLE BY APPLICABLE LAW, FARMER HELPER MACHINERY CO. LTD. HEREBY DISCLAIMS ALL WARRANTIES OF ANY KIND, EITHER EXPRESS OR IMPLIED, INCLUDING, ANY IMPLIED WARRANTIES WITH RESPECT TO THE PRODUCT PURCHASED, WITHOUT LIMITING THE GENERALITY OF THE FOREGOING, FARMER HELPER MACHINERY CO. LTD. HEREBY EXPRESSLY DISCLAIMS ALL LIABILITY FOR PRODUCT DEFECT OR FAILURE, CLAIMS THAT ARE DUE TO NORMAL WEAR, PRODUCT MISUSE, ABUSE, PRODUCT MODIFICATION, IMPROPER PRODUCT SELECTION, NON-COMPLIANCE WITH ANY CODES, OR MISAPPROPRIATION. • FARMER HELPER MACHINERY CO. LTD.. MAKES NO WARRANTIES TO THOSE DEFINED AS "CONSUMERS" IN THE MAGNUSON-MOSS WARRANTY-FEDERAL TRADE COMMISSION IMPROVEMENTS ACT. THE FOREGOING EXCLUSIONS OF IMPLIED WARRANTIES DO NOT APPLY TO THE EXTENT PROHIBITED BY LAW. PLEASE REFER TO YOUR LOCAL LAWS FOR ANY SUCH PROHIBITIONS

THERE SHALL BE NO LIABILITY FOR PRODUCT LIABILITY OR LIABILITY ON THE PART OF BETST PRODUCTS, LLC. FOR ANY GENERAL, SPECIAL OR CONSEQUENTIAL DAMAGES ARISING OUT OF THE SALE OR USE OF ANY PRODUCTS SOLD BY BETST PRODUCTS, LLC OR AN AGENT THEREOF. BETST PRODUCTS, LLC. MAKES NO WARRANTIES, EXPRESS OR IMPLIED, (INCLUDING, BUT NOT LIMITED TO, ANY WARRANTY OF MERCHANTABILITY OR FITNESS OF THE PRODUCTS FOR ANY PURPOSE) WITH RESPECT TO THE PRODUCTS COVERED BY THIS AGREEMENT EXCEPT AS IN THIS PARAGRAPH OTHERWISE EXPRESSLY PROVIDED.

THIS IS THE SOLE AND ONLY WARRANTY OF FARMER HELPER MACHINERY CO. LTD. PRODUCTS. NO OTHER WARRANTY IS APPLICABLE, EITHER EXPRESSED OR IMPLIED, IN FACT OR BY LAW,

This warranty shall not be interpreted to render Betst Products, llc., or any authorized agent liable for injury or damages of any kind or nature, direct, consequential, or contingent, to person or property.

The sole and only remedy in regard to any defective products shall be the repair or replacement thereof as herein provided. Betst Products, llc., agent(s) of Betst Products, llc. shall not be liable for any consequential, special, incidental or punitive damages resulting from or caused by any such defects.

Farmer-Helper Machinery reserves the right to make improvements in design or changes in specifications at any time, without incurring any obligations to owners of units previously sold.

No one is authorized to alter, modify, or enlarge this warranty nor the exclusions, limitations, and reservation thereof.

**WARRANTY VOID IF REGISTRATION IS NOT RECEIVED OR RECORDED ONLINE WITHIN 30 DAYS OF PURCHASE DATE OR SHIP DATE, WHICHEVER IS LATER.**

## **FARMER HELPER MACHINERY REGISTRATION**

Item \_\_\_\_\_ Model # \_\_\_\_\_ Purchase Date \_\_\_\_/\_\_\_\_/\_\_\_\_  
Purchased From: \_\_\_\_\_ Gift ☐ Inv#/Order# \_\_\_\_\_  
Owner Name: \_\_\_\_\_ Serial # (if Applicable) \_\_\_\_\_  
Owner Address: \_\_\_\_\_  
City: \_\_\_\_\_ County: \_\_\_\_\_ ST: \_\_\_\_\_ Zip Code: \_\_\_\_\_  
Phone: \_\_\_\_\_ Email: \_\_\_\_\_

### **Acceptance of responsibility:**

I (Purchaser) have read operators manual and Limited Warranty or someone has read/and explained all instructions to me. I understand this warranty does not cover any labor and that all disputes will be settled by binding arbitration. Binding arbitration is conducted by the Better Business Bureau (BBB) located at 4004 SW Kruse Way Place Ste 375 Lake Oswego OR 97035 or the current BBB location closest to Betst Products, I acknowledge my Limited Warranty is void if any attempt to repair or replace defective parts has been made by unauthorized personnel. I acknowledge receipt of my Operators Manual and have read the Safe Operation Section. I acknowledge understanding maintenance and safe operation requirements, item specifications, operation, controls, and storage requirements. **I understand that I alone am responsible for proper maintenance, care and safe operation of this Value-Leader item.**

I (Purchaser) agree that persons not familiar with the operation of this item should not be allowed to use it. Children especially should not operate or be near Power Products when in use. **ANYONE OPERATING FARMER-HELPER PRODUCTS SHOULD HAVE READ OPERATIONS MANUALS AND SAFETY MANUALS.**

**Owners Signature:** x \_\_\_\_\_ **Date:** \_\_\_\_/\_\_\_\_/\_\_\_\_

**You must sign this warranty and mail or fax copy to Betst Products, 83371 Melton Rd N.#3, Creswell OR 97426. If you prefer you may complete your registration on line. This warranty is not effective unless the Purchaser completes Registration and Warranty Form within 30 days of purchase or ship date whichever is later.**

**Fax to 1-904-216-2059**

NOTE: We may refuse warranty of any kind unless Betst Product, Ilc., receives a completed, legible and signed warranty registration. It is the responsibility of the purchaser to assure that registration document is received by Betst Products, Ilc..

**Fax to 1-904-216-2059**

## **2 YEAR EXTENDED WARRANTY & REGISTRATION**

### **Farmer Helper Machinery Branded Products**

#### **2 YEAR EXTENDED WARRANTY**

2 Year Extended Warranty amends to original Recorded Manufacturers Warranty Registration the time period of described coverage. Extended Warranty does not apply to Consumable and Expendable Items as described in Product Warranty Registration.

This Amendment does not affect any other part of recorded Warranty Registration or Policy. This Warranty Extension is the soul responsibility of Betst Products, llc.

No one is authorized to alter, modify, or enlarge this addition to the original manufacturers recorded warranty registration.

#### **EXTENDED REGISTRATION & PAYMENT MUST BE RECEIVED WITHIN 30 DAYS OF PURCHASE DATE**

##### ***EXTENDED WARRANTY REGISTRATION***

Product & Model # : \_\_\_\_\_

Serial #: \_\_\_\_\_

Owner Name: \_\_\_\_\_

Betst Products Invoice # \_\_\_\_\_

##### **Acceptance of responsibility:**

I (Purchaser) have Read and understand the Extended Warranty or someone has read/and explained all the above to me. I understand this extended warranty does not cover any labor. I have filed my Original Warranty Registration and fully understand my requirements. **I understand that I alone am responsible for proper maintenance, care and safe operation of this tractor implement.**

~~I (purchaser) also understand that persons not familiar with the operation of this equipment should not be allowed to use it. Children especially should not operate or be near equipment. ANYONE OPERATING EQUIPMENT SHOULD HAVE READ ALL EQUIPMENT OPERATIONS MANUALS AND SAFETY MANUALS..~~

**Owners Signature:** x \_\_\_\_\_

**Date:** \_\_\_\_\_

**You must sign this extended warranty and email to [support@betstco.com](mailto:support@betstco.com) or Fax to 1-305-397-1780 or mail copy to Betst Products, 83371 Melton Rd N.#3, Creswell OR 97426. This extended warranty is not effective unless the Purchaser faxes or mails this Registration Form within 30 days of purchase.** NOTE: The manufacturer may refuse warranty of any kind unless Betst Products receives a completed, legible and signed extended warranty registration. It is the responsibility of the purchaser to assure that this registration document is received by Betst Products.

**To Make Payment for Extended Warranty Call: 1-877-876-7895**