



FHM

**FARMER-HELPER
MACHINERY COMPANY**

RCG SUB-COMPACT FIELD MOWERS



OPERATION & PARTS MANUAL

**Please read these instructions carefully before using!
Always grease all fittings and be sure to always check and
fill with oil before operating! Retain this manual for future
reference. Uses Approximately 1 quart 80-90 gear lube**

www.Betstco.com

BETSTCO

Toll Free: 877-876-7895, E-mail: sales@betstco.com
83371 Melton Rd, Creswell OR 97426



RUGGED LABOR SAVING EQUIPMENT SINCE 1995

Specifications subject to change without notice.

Revision 1-2016

The information contained in this operations manual is a general introduction only. The information contained herein may be modified at any time, for any reason. Modification may affect the details or specifications of the product described in this manual. Therefore, users – dealers must include the manufacturing date and serial number when placing an order for spare parts and components. Thanks.

Table of Contents

1. Introduction	4
2. Setup and Assembly Instructions	4
3. PTO Driveshaft Safety Tips	5
4. Protective Guards and Shields	6
5. Safety Instructions	6
6. Operator Protective Gear	7
7. Operation Checklist	7
8. RCG mower Connection and Operation	7
9. Cutting Height Adjustment	9
10. Blade Replacement	10
11. Belt Tension and Adjustment	10
12. Lubrication Frequencies and Locations	10
13. Preventive Maintenance	11
14. Troubleshooting	11
15. Parts and Fasteners	12
16. Torque Values	13
17. Specifications	13
20. Parts Diagrams and Numbers	14
21. Warranty Registration	19

1. INTRODUCTION

Before using your RCG mower, read and understand this operation manual and the accompanying maintenance instructions. It contains important information which will help you observe proper safety precautions, get the most work from your RCG mower and help prolong the life of your RCG mower.

2. SETUP and ASSEMBLY INSTRUCTIONS

Your RCG mower will arrive in a metal shipping frame. This frame can be dismantled in minutes to allow access to all parts of your mower.

See Torque Value Chart at near the back of manual for all specific Bolts being used.

Remove Parts Box, PTO Driveline, and then Mower from crate. Attach loose parts using the illustrations at the back of manual for position.

Attach upper 3-point bracket and brace as shown in illustrations. Hint-Do not tighten nuts & bolts until all have been loosely assembled in their proper location. Tighten from top-down.

Lube grease points on mower and driveline (Use lithium base General Purpose Grease)

Fill Gear Box with 80-90 Gear Oil (Approx. 1 Qt.) Fill Half Way to the top.

Completely read the rest of manual before attaching PTO driveline and operating the mower.

Before Operation check all Bolts, Nuts, and Zerks for tightness. Verify the tightness of all blade retaining bolts and nuts. Check all blade for free swinging action.

3. PTO DRIVESHAFT SAFETY TIPS

Your RCG mower is shipped with a shear bolt protection PTO driveshaft.

Always ensure that the PTO shaft is no more than 15 degrees of horizontal when operating.

-The following steps are recommended for safe operation of the driveshaft under field conditions.

-Test hitch angle to prevent the driveshaft from:

Extending beyond the recommended maximum length.

Bottoming out

Reaching a position that allows joints to lock

Exceeding the maximum allowable angle for constant velocity (CV) joints.

-Specify and test telescoping members to allow the lowest possible thrust loads, considering the expected working conditions.

-Specify and test torque limiters to control excessive shock.

-Provide a means to support the drive shaft when it is disconnected from the tractor, to prevent damage during storage or transportation.

-Provided drive shaft is of Shear design using a Grade 4 bolt, if replacing this bolt do not use higher grade as this may cause damage to the PTO driveshaft, Implement, or your tractor.

-On drive shafts with torque-limiting or overrun devices, be sure to connect the device on the end of the drive shaft nearest the chipper.

-Provide a proper clearance zone for the operation of the driveshaft, to avoid damage to the shielding components.

-It is not recommended to use PTO adaptors which may defeat the purpose of the tractor's master shield and/or adversely affect the performance of the driveshaft.

Never use harden bolt as PTO driveshaft shear bolt. Doing so will void warranty.

4. PROTECTIVE GUARDS AND SHIELDS

Do not allow the RCG mower to be operated without the chain deflector's in place.

PTO driveshaft should consist of a PTO master shield, integral driveshaft shield, and a mower input connection shield.

1. Follow all RCG mower and tractor instruction labels and manuals. The RCG mower should be used only with the tractor's PTO master shield in place.
2. Specify and test an integral driveshaft shield with end cones which will overlap, but not interfere with the PTO master shield or RCG mower input connection shield.
3. A RCG mower input connection shield should be used in addition to the integral driveshaft shield, in order to guard the shaft coupling and any torque limiting device installed on the driveshaft.
4. Check that all routine maintenance of the driveshaft can be done without removal of the shields.

5. SAFETY INSTRUCTIONS

Do not attempt to operate the RCG mower until you have read and understood this manual.

Keep the decals in place and verify they are understandable. New labels can be ordered from Betst Products, llc. upon request. If your RCG mower is repainted, be sure the labels and decals remain visible.

Never leave the RCG mower running unattended.

Do not attempt alterations, repairs or adjustments while blade rotor is turning. Always disconnect the PTO and stop the tractor motor, then put keys in your pocket. Only use tractor of specified HP for your model RCG mower as defined in the specifications.

Keep hands, feet and other extremities out of and away from the blade rotor area. When checking blades, EXERCISE EXTREME CAUTION! If accidentally rotated, the blade rotor can contain enough residual energy to cause serious injury.

Never allow anyone to stand beside or behind mower while operating.

Keep everyone, especially children and animals, away from the operation area.

Anyone who has not read and understood this manual should not be in the area.

6. OPERATOR PROTECTIVE GEAR

The following protective clothing and gear is recommended when using your RCG mower.

EYES	--	Wraparound Safety Glasses or Goggles
EARS	--	Ear Plugs
HANDS	--	Leather Gloves
FEET	--	Steel-Toed Boots
LEGS	--	Heavy Pants
ARMS	--	Long-Sleeved Shirt

NO LOOSE CLOTHING SHOULD BE WORN AROUND THE RCG mower

7. OPERATION CHECKLIST

CAUTION: Look under RCG mower before operating to be sure the blade area is clear.

Make sure that:

- You have completed all steps of the assembly instructions
- The PTO shaft doesn't come apart or bottom out during the normal lifting range.
- There is no person around mower.
- Remove Tractor Drawbar

During and after operation, check the grass clippings or mulched limbs for size and quality of cut. It may be necessary to adjust the cutting height. See adjusting cutting height.

8. RCG mower Connection and Operation

Remember that if RCG mower blades are blunted they will not cut properly. Dirt, rocks, nails, or other foreign material will shorten blade life.

Always review the manual before operating the RCG mower.

Operate mower in a safe well known area with the rear pointed away from doorways, sidewalks, or any areas where your view is obstructed or people may approach.

Only use 540 RPM PTO Selection, any other use will void the warranty and may cause severe damage to the gear box or mower.

Connecting to Tractor

Make sure there are no obstructions under the RCG mower

Align lower link arms of tractor to hitch clevises on mower, Insert lower hitch pins into lower ball swivels and attach linch pins.

Attach tractor top link to upper floating hitch on mower with pin supplied. Secure with lock pin.

Slide driveline end with shear system over the tractor's splined PTO shaft and secure it with locking device of driveline

Slide driveline end with twist system over the mower's splined PTO shaft and secure it with locking device of driveline.

Driveline should now be moved back and forth to insure that it is secure on the PTO shaft of the tractor and mower gearbox.

When raising the mower to the transport position, be sure that driveline does not contact tractor or mower. Adjust and set the tractor's 3-point hitch lift height so that the driveline does not contact mower deck in the fully raised position.

When moving over paved or rock road way be sure mower is lifted off the surface.

To Begin Mowing

Clear the Area to be mowed of objects and debris that might be picked up and thrown by the mower blades.

Grass is best cut when dry. Mowing wet grass can cause plugging resulting in grass clumps behind the mower.

Grass should be cut frequently as smaller clippings deteriorate faster.

If cutting extremely tall grass, it is best to raise the cutting height and mow the area, then lower the cutting height and mow a second time at the desired height.

To begin cutting, observe all safety guidelines in the manual.

Always check Gear Oil Level before mowing.

Engage PTO driveline at 540 RPM selection, Tractor engine operation RPM should be at least 1200 RPM, or as defined by tractor manufactures "PTO RPM RANGE"

At low engine rpm's you may experience jerking in the mower, increase the engine rpm until there is no jerking.

Most cutting is preformed with the 3pt lift system in the float position.

If the blades are touching the surface while in float position, either adjust cutting height or raise mower with 3pt lift into fixed height position. See Cutting Height Adjustment.

At first begin mowing at a slow forward speed. Mower knives will cut better at a faster blades speed and slower travel speed.

After mowing 50 feet, stop and check to see that the mower is adjusted properly for the cutting conditions.

Do Not engage PTO with mower fully raised off the ground.

Normal mowing speed will be between 2-8 mph and you will need to maintain tractor PTO speed to produce a clean cut so select a tractor gear and range that will maintain this combination. The quality of cut or degree of debris pulverization will be better at lower ground speeds and cutting denser ground cover or heavier brush may create the need to slow down. Remember to look back often.

9. CUTTING HEIGHT ADJUSTMENT

The RCG mower cutting height depends upon the position of your 3-point. On Rough and Rocky terrain it is recommend that you cut high with all parts of the mower 1~3" above the ground. To achieve lowest cutting height in this type of terrain place 3-point in lowest position or if available float position. This will allow the skids to follow the contour of the ground. Raise mower before turning if you wish to avoid turning skid marks on the ground.

The top center link can also be used to adjust cutting aggressiveness of blades. In dense growth the mower may be raised slightly higher in the front to allow a larger feed opening at the front of the mower deck.

10. BLADE REPLACEMENT

The best way to tell if the blades need replacing is to watch the results of your mowing. Dull blades cause many problems, including:

- Loss of cutting power
- Jamming or Plugging
- Rough cutting with more vibration than usual
- Rowing left in cut

To remove the blades, take the PTO shaft out of gear. Shut off the tractor and keep the keys in your pocket. The blades are accessed underneath the mower.

Prop up mower with suitable device to hold the weight of the mower.

Inspect and remove/replace/sharpen dull or damaged blades.

11. OPERATIONAL HINTS

- a. Although it is best to cut when it is dry, the field mower works well in wet conditions as well. However, the operator will have to travel slower to do the same quality cutting. It will also be necessary to clean the machine more frequently to prevent caking and clogging of the blade area.
- b. Set the upper link at the front of its slot when level to prevent the driveline from hitting the deck when lifting.
- c. The field mower should always be operated at the rated speed of 540 RPM. PTO Speed. The cutting action is generated by the speed of the blade tip. When the speed drops below a certain rate (slowing of the input speed or RPM), the blades start to tear the material rather than cut it and will give a "ragged" looking cut.
- d. Vary ground speed by changing gears in the tractor transmission rather than changing the throttle setting. Forward travel speeds can range from 2 to 8 mph (5 to 13 km/h) or more depending on the type of terrain, grass or crop cover length, moisture level and power available.
- e. If the crop or grass is tall, cut it twice to obtain the best results. This allows the unit to cut less material on each pass.
- f. When cutting a new area for the first time, always set the mower to cut high to clear unknown obstructions. If none are found, the cutter can be run lower for the second pass.

WARNING: The rotating blades can pick up objects and expel them at a high rate of speed. These projectiles can be a hazard to the people and property. Never operate slashing mower when there are bystanders, especially children around. Use extra care when operating in populated or congested areas.

12. LUBRICATION FREQUENCIES AND LOCATIONS

PTO SHAFT –2 zerks on Universal Once a day with lithium based Multipurpose Grease.

ROTOR DRIVESHAFT –There is a zerk on each end of rotor shaft. Add multipurpose grease before each use. (2-3 Pumps)

GEAR BOXES –Check Level each time before operating, drain/fill as needed.

13. PREVENTIVE MAINTENANCE

Check all bolts & nuts after initial 4 hours of operation, and once per day thereafter before beginning operation.

Check belt Tension 4 hours after initial operation, and every 24 hours of operation thereafter before beginning operation.

14. TROUBLESHOOTING

PROBLEM: *Patches of Uncut Grass*

Possible Causes	Solution
Low Throttle	Increase Engine RPM
Traveling too fast	Reduce Travel Speed
Blades Dull	Reverse/Replace

PROBLEM: *Excessive Vibration*

Possible Causes	Solution
Missing Blades	Replace missing blades
Debris in Belt Area	Remove cover and clean area
PTO Driveline Bent	Replace Bent/Broken Parts
Engine Speed	Increase Engine Speed

PROBLEM: *Gear Box Noisy*

Possible Causes	Solution
Low Oil Level	Check and Fill with Oil
Broken/Damaged Internal Parts	Dismantle/Replace Parts

PROBLEM: *Blades not turning*

Possible Causes	Solution
PTO shaft is not turning	Replace PTO driveline shear bolt. Mower clogged, need to clean

PROBLEM: *Knives Scalping Grass*

Possible Causes

Incorrect Cutting Height
Mowing Pattern
Turning to Quickly

Solution

Adjust Cutting height
Change Mowing Pattern
Reduce Speed during turns

PROBLEM: *Uneven Cut*

Possible Causes

Missing/Dull Blades
Travelling to Fast
Mower Not Level

Solution

Remove/Replace Blades
Reduce Travel Speed
Adjust 3Pt Linkage

PROBLEM: *Tractor Loaded Down by Mower*

Possible Causes

Low Engine Speed
Travelling to Fast
Blade Area Clogged

Solution

Increase Engine Throttle
Reduce Travel Speed
Clean Blade Area

13. PARTS AND FASTENERS

Your RCG mower is designed for ease of maintenance. Replacement parts are available from Betst Products, llc. at 1-541-895-3083 or Support@Betstco.com Check the parts list for specification.

See Parts Diagrams at end of manual

16 TORQUE VALUES

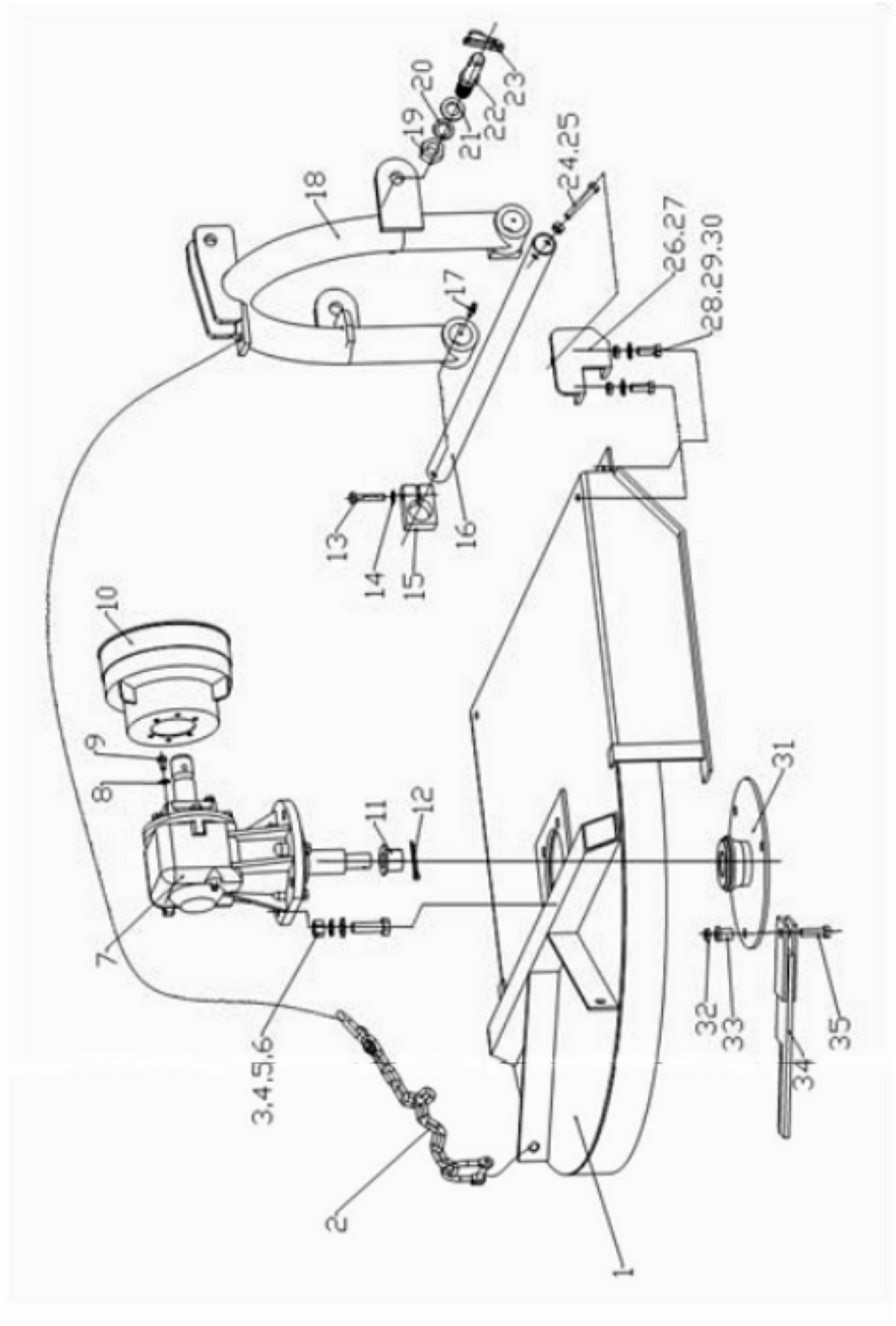
Torque Values Chart													
in-tpi ¹	Bolt Head Identification						mm x pitch	Bolt Head Identification					
	Grade 2		Grade 5		Grade 8			Class 5.8		Class 8.8		Class 10.9	
	N · m	ft-lb ³	N · m	ft-lb	N · m	ft-lb	N · m	ft-lb	N · m	ft-lb	N · m	ft-lb	
1/4" - 20	7.4	5.6	11	8	16	12	M 5 X 0.8	4	3	6	5	9	7
1/4" - 28	8.5	6	13	10	18	14	M 6 X 1	7	5	11	8	15	11
5/16" - 18	15	11	24	17	33	25	M 8 X 1.25	17	12	26	19	36	27
5/16" - 24	17	13	26	19	37	27	M 8 X 1	18	13	28	21	39	29
3/8" - 16	27	20	42	31	59	44	M10 X 1.5	33	24	52	39	72	53
3/8" - 24	31	22	47	35	67	49	M10 X 0.75	39	29	61	45	85	62
7/16" - 14	43	32	67	49	95	70	M12 X 1.75	58	42	91	67	125	93
7/16" - 20	49	36	75	55	105	78	M12 X 1.5	60	44	95	70	130	97
1/2" - 13	66	49	105	76	145	105	M12 X 1	90	66	105	77	145	105
1/2" - 20	75	55	115	85	165	120	M14 X 2	92	68	145	105	200	150
9/16" - 12	95	70	150	110	210	155	M14 X 1.5	99	73	155	115	215	160
9/16" - 18	105	79	165	120	235	170	M16 X 2	145	105	225	165	315	230
5/8" - 11	130	97	205	150	285	210	M16 X 1.5	155	115	240	180	335	245
5/8" - 18	150	110	230	170	325	240	M18 X 2.5	195	145	310	230	405	300
3/4" - 10	235	170	360	265	510	375	M18 X 1.5	220	165	350	260	485	355
3/4" - 16	260	190	405	295	570	420	M20 X 2.5	280	205	440	325	610	450
7/8" - 9	225	165	585	430	820	605	M20 X 1.5	310	230	650	480	900	665
7/8" - 14	250	185	640	475	905	670	M24 X 3	480	355	760	560	1050	780
1" - 8	340	250	875	645	1230	910	M24 X 2	525	390	830	610	1150	845
1" - 12	370	275	955	705	1350	995	M30 X 3.5	960	705	1510	1120	2100	1550
1-1/8" - 7	480	355	1080	795	1750	1290	M30 X 2	1060	785	1680	1240	2320	1710
1 1/8" - 12	540	395	1210	890	1960	1440	M36 X 3.5	1730	1270	2650	1950	3660	2700
1 1/4" - 7	680	500	1520	1120	2460	1820	M36 X 2	1880	1380	2960	2190	4100	3220
1 1/4" - 12	750	555	1680	1240	2730	2010							
1 3/8" - 6	890	655	1990	1470	3230	2380							
1 3/8" - 12	1010	745	2270	1670	3680	2710							
1 1/2" - 6	1180	870	2640	1950	4290	3160							
1 1/2" - 12	1330	980	2970	2190	4820	3560							

¹ in-tpi = nominal thread diameter in inches-threads per in.
² N · m = newton-meters
³ ft-lb = foot pounds
⁴ mm x pitch = nominal thread diameter in millimeters x thread pitch

17 SPECIFICATION

RCG Mowers			
Models	RCG100	RCG110	RCG120
Overall Width	41"	45"	49"
Cutting Width	37"	40"	45"
Overall Length	44"	48"	53"
Deck Thickness	10 Gauge / 3/16"		
Deck Height	6"		
Running Skids	3/16" x 2"		
Number of Blades	3		
Blade Size	5/16" x 2 1/2"		
Blade Hub	Solid Steel Round Field Hub		
3-Point Category	Cat I	Cat I	Cat I
Weight	331 lbs	353 lbs	375 lbs
Gearbox Rating	40 HP	40 HP	40 HP
04 Series Driveline	Shear Bolt	Shear Bolt	Shear Bolt
Tractor HP	15 - 30 HP	15 - 30 HP	15 - 30 HP

20 PARTS DIAGRAM



20 PARTS LIST

ITEM	PART #	DESCRIPTION
1	RCG100.015	Rcg100 Deck weldment
	RCG110.015	Rcg110 Deck weldment
	RCG120.015	Rcg120 Deck weldment
2	RCG100.014	Rcg100 Chain assembly
	RCG110.014	Rcg110 Chain assembly
	RCG120.014	Rcg120 Chain assembly
3	GB5783	Bolt M16X50
4	GB97.1	Plain washer 16
5	GB93	Lock washer 16
6	GB6170	Nut M16
7	CGS068.001	Gear box (two) assembly
8	GB97.1	Plain washer 8
9	GB5783	Bolt M8X16
10	FM150.120	Cover
11	GB6178	Slotted nut M24X1.5
12	GB91	Cotter 5X50
13	GB5782	Bolt M10X50
14	GB97.1	Plain washer 10
15	RCG100.101	Link stopper
16	RCG100.102	Connecting pipe
17	JB7940.1	Grease nipples M6
18	RCG100.011	Hitch frame
19	GB6171	Nut M22X1.5
20	GB93	Lock washer 22

20 PARTS LIST (continued)

20	GB93	Lock washer 22
21	GB97.1	Plain washer 22
22	FM150.114	Lift pin
23	FM150.016	Lock pin 12
24	GB5782	Bolt M10X65
25	GB889.1	Nut M10
26	RCG100.016	Left link weldment
27	RCG100.012	Right link weldment
28	GB5783	Bolt M12X30
29	GB97.1	Plain washer 12
30	GB889.1	Nut M12
31	RCG100.018	Tool shank weldment
32	GB889.1	Nut M12
33	RCG100.103	Teleflex
34	RCG100.017	Rcg100 Cutter blade weldment
	RCG110.017	Rcg110 Cutter blade weldment
	RCG120.017	Rcg120 Cutter blade weldment
35	GB5783	Bolt M12X40
37	TM270A.00.012	Deck weldment
38	GB5783	Bolt M12X25
39	GB97.1	Plain washer 12
40	GB6170	Nut M12
41	TM270A.00.011	Side glide board weldment

Farmer Helper Machinery Brand LIMITED WARRANTY

Unless otherwise stated on purchase invoice, Betst Products, llc. warrants to original Purchaser that Farmer Helper Machinery products are free from major defects in material under normal use and service for a period of Two (2) Years from the date the product is purchased or shipped, whichever is later.

Commercial use 180 days. Use at address that is not yours, is considered commercial use. Consumable, Expendable, Wear Items (Examples:Rubber & plastic parts, hydraulic hoses, belts, tires, cables, blades, tines, wedges, teeth, tips, chains, pins, brushes, filters, etc.) and cracked hydraulic pumps, bent or broken cylinder rods are not covered under this warranty. Warranty does not cover items that have been modified, damaged by abuse or usage not in accordance with design or maintenance.

Betst Products, llc. obligation under this warranty is to repair or replace defective product upon approval by; Betst Products, llc., 83371 Melton Rd. N., Creswell OR 97426 that Warranty Claim is Valid. Product shall be returned upon request of Betst Products, llc. Transportation charges to be prepaid by buyer. **Gasoline or diesel engines used to powered Farmer Helper Machinery products are covered by the warranty of the appropriate engine manufacture and Purchaser must look to the engine manufacture for all issues relating to engine operation.**

Betst Products, llc. assumes no responsibility for labor.

PERMISSIBLE BY APPLICABLE LAW, BETST PRODUCTS, LLC. HEREBY DISCLAIMS ALL WARRANTIES OF ANY KIND, EITHER EXPRESS OR IMPLIED, INCLUDING, ANY IMPLIED WARRANTIES WITH RESPECT TO THE PRODUCT PURCHASED, WITHOUT LIMITING THE GENERALITY OF THE FOREGOING, BETST PRODUCTS, LLC. HEREBY EXPRESSLY DISCLAIMS ALL LIABILITY FOR PRODUCT DEFECT OR FAILURE, CLAIMS THAT ARE DUE TO NORMAL WEAR, PRODUCT MISUSE, ABUSE, PRODUCT MODIFICATION, IMPROPER PRODUCT SELECTION, NON-COMPLIANCE WITH ANY CODES, OR MISAPPROPRIATION. • BETST PRODUCTS, LLC. MAKES NO WARRANTIES TO THOSE DEFINED AS "CONSUMERS" IN THE MAGNUSON-MOSS WARRANTY-FEDERAL TRADE COMMISSION IMPROVEMENTS ACT. THE FOREGOING EXCLUSIONS OF IMPLIED WARRANTIES DO NOT APPLY TO THE EXTENT PROHIBITED BY LAW. PLEASE REFER TO YOUR LOCAL LAWS FOR ANY SUCH PROHIBITIONS

THERE SHALL BE NO LIABILITY FOR PRODUCT LIABILITY OR LIABILITY ON THE PART OF BETST PRODUCTS, LLC. FOR ANY GENERAL, SPECIAL OR CONSEQUENTIAL DAMAGES ARISING OUT OF THE SALE OR USE OF ANY PRODUCTS SOLD BY BETST PRODUCTS, LLC OR AN AGENT THEREOF. BETST PRODUCTS, LLC. MAKES NO WARRANTIES, EXPRESS OR IMPLIED, (INCLUDING, BUT NOT LIMITED TO, ANY WARRANTY OF MERCHANTABILITY OR FITNESS OF THE PRODUCTS FOR ANY PURPOSE) WITH RESPECT TO THE PRODUCTS COVERED BY THIS AGREEMENT EXCEPT AS IN THIS PARAGRAPH OTHERWISE EXPRESSLY PROVIDED.

THIS IS THE SOLE AND ONLY WARRANTY OF Farmer Helper Machinery PRODUCTS. NO OTHER WARRANTY IS APPLICABLE, EITHER EXPRESSED OR IMPLIED, IN FACT OR BY LAW,

This warranty shall not be interpreted to render Betst Products, llc., or any authorized agent liable for injury or damages of any kind or nature, direct, consequential, or contingent, to person or property.

The sole and only remedy in regard to any defective products shall be the repair or replacement thereof as herein provided. Betst Products, llc., agent(s) of Betst Products, llc. shall not be liable for any consequential, special, incidental or punitive damages resulting from or caused by any such defects.

Betst Products, llc. reserves the right to make improvements in design or changes in specifications at any time, without incurring any obligations to owners of units previously sold.

No one is authorized to alter, modify, or enlarge this warranty nor the exclusions, limitations, and reservation thereof.

WARRANTY VOID IF REGISTRATION IS NOT RECEIVED OR RECORDED ONLINE WITHIN 30 DAYS OF PURCHASE DATE OR SHIP DATE, WHICHEVER IS LATER.

REGISTRATION

Item _____ Model # _____ Purchase Date ____/____/____
Purchased From: _____ Gift Inv#/Order# _____
Owner Name: _____ Serial # (if Applicable) _____
Owner Address: _____
City: _____ County: _____ ST: _____ Zip Code: _____
Phone: _____ Email: _____

Acceptance of responsibility:

I (Purchaser) have read operators manual and Limited Warranty or someone has read/and explained all instructions to me. I understand this warranty does not cover any labor and that all disputes will be settled by binding arbitration. Binding arbitration is conducted by the Better Business Bureau (BBB) located at 4004 SW Kruse Way Place Ste 375 Lake Oswego OR 97035 or the current BBB location closest to Betst Products, I acknowledge my Limited Warranty is void if any attempt to repair or replace defective parts has been made by unauthorized personnel. I acknowledge receipt of my Operators Manual and have read the Safe Operation Section. I acknowledge understanding maintenance and safe operation requirements, item specifications, operation, controls, and storage requirements. **I understand that I alone am responsible for proper maintenance, care and safe operation of this Value-Leader item.**

I (Purchaser) agree that persons not familiar with the operation of this item should not be allowed to use it. Children especially should not operate or be near Power Products when in use. ANYONE OPERATING VALUE-LEADER PRODUCTS SHOULD HAVE READ OPERATIONS MANUALS AND SAFETY MANUALS.

Owners Signature: x _____ Date: ____/____/____

You must sign this warranty and mail or fax copy to Betst Products, 83371 Melton Rd N.#3, Creswell OR 97426. If you prefer you may complete your registration on line. This warranty is not effective unless the Purchaser completes Registration and Warranty Form within 30 days of purchase or ship date whichever is later.

Fax to 1-904-216-2059

NOTE: We may refuse warranty of any kind unless Betst Product, Ilc., receives a completed, legible and signed warranty registration. It is the responsibility of the purchaser to assure that registration document is received by Betst Products, Ilc..

Fax to 1-904-216-2059

2 YEAR EXTENDED WARRANTY & REGISTRATION

Farmer Helper Machinery Branded Products

2 YEAR EXTENDED WARRANTY

2 Year Extended Warranty amends to original Recorded Warranty Registration the time period of described coverage. Extended Warranty does not apply to Consumable and Expendable Items as described in Product Warranty Registration.

This Amendment does not affect any other part of recorded Warranty Registration or Policy.

No one is authorized to alter, modify, or enlarge this Amendment to original recorded warranty registration.

EXTENDED REGISTRATION & PAYMENT MUST BE RECEIVED WITHIN 30 DAYS OF PURCHASE DATE

EXTENDED WARRANTY REGISTRATION

Product & Model # : _____

Serial #: _____

Owner Name: _____

Betst Products Invoice # _____

Acceptance of responsibility:

I (Purchaser) have Read and understand the Extended Warranty or someone has read/and explained all the above to me. I understand this extended warranty does not cover any labor. I have filed my Original Warranty Registration and fully understand my requirements. **I understand that I alone am responsible for proper maintenance, care and safe operation of this tractor implement.**

I (purchaser) also understand that persons not familiar with the operation of this equipment should not be allowed to use it. Children especially should not operate or be near equipment. ANYONE OPERATING EQUIPMENT SHOULD HAVE READ ALL EQUIPMENT OPERATIONS MANUALS AND SAFETY MANUALS..

Owners Signature: x _____

Date: _____

You must sign this extended warranty and email to support@betstco.com or Fax to 1-305-397-1780 or mail copy to Betst Products, 83371 Melton Rd N.#3, Creswell OR 97426. This extended warranty is not effective unless the Purchaser faxes or mails this Registration Form within 30 days of purchase. NOTE: The manufacturer may refuse warranty of any kind unless Betst Products receives a completed, legible and signed extended warranty registration. It is the responsibility of the purchaser to assure that this registration document is received by Betst Products.

To Make Payment for Extended Warranty Call: 1-877-876-7895